

UNITED STATES
DEPARTMENT OF THE INTERIOR
BUREAU OF LAND MANAGEMENT

APPLICATION FOR PERMIT TO DRILL, DEEPEN, OR PLUG BACK

1a. TYPE OF WORK DRILL		RECEIVED JUN 01 1989	5. LEASE NUMBER SF-077648	
1b. TYPE OF WELL GAS			6. IF INDIAN, ALL. OR TRIBE NAME	
2. OPERATOR SOUTHLAND ROYALTY CO. OIL CON. DIV.			7. UNIT AGREEMENT NAME	
3. ADDRESS & PHONE NO. OF OPERATOR P O BOX 4289 FARMINGTON, NM 87499			8. FARM OR LEASE NAME DAVIS	
4. LOCATION OF WELL 2085'S 1330'W			9. WELL NO. 502	
14. DISTANCE IN MILES FROM NEAREST TOWN 8 MILES FROM AZTEC			10. FIELD, POOL, OR WILDCAT DIST. 3 BASIN FRUITLAND COAL	
15. DISTANCE FROM PROPOSED LOCATION 1330' TO NEAREST PROPERTY OR LEASE LINE.			11. SEC. T. R. M OR BLK. K SEC. 12 T31N R12W NMPM	
16. ACRES IN LEASE 2198.38			12. COUNTY SAN JUAN	
17. ACRES ASSIGNED TO WELL 320.00 276.54			13. STATE NM	
18. DISTANCE FROM PROPOSED LOCATION TO NEAREST WELL DR. 1000' COMPL., OR APPLIED FOR ON THIS LEASE.		RECEIVED MAY 17 1989 OIL CON. DIV. DIST. 3	19. PROPOSED DEPTH	
			20. ROTARY OR CABLE TOOLS ROTARY	
21. ELEVATIONS (DF, FT, GR, ETC) 6260'GL			22. APPROX. DATE WORK WILL START	
23. PROPOSED CASING AND CEMENTING PROGRAM				

*SEE OPERATIONS PLAN

DRILLING OPERATIONS AUTHORIZED ARE
SUBJECT TO COMPLIANCE WITH ATTACHED
"GENERAL REQUIREMENTS".

24. AUTHORIZED BY: John Bradfield
REGULATORY AFFAIRS

4-10-89
DATE

PERMIT NO. _____ APPROVAL DATE _____
APPROVED BY _____ TITLE _____ DATE _____

APPROVED 11
AS AMENDED
MAY 11 1989

NOTE: THIS FORMAT IS ISSUED IN LIEU OF US BLM FORM 3160-3. AREA MANAGER

NMOCC

OPERATIONS PLAN

DATE: APR 8, 1989

Well Name: 502 DAVIS
 Sec. 12 T31N R12W
 BASIN FRUITLAND COAL

2085'S 1330'W
 SAN JUAN NEW MEXICO
 Elevation 6260'GL

Formation tops: Surface- NACIMINETO
 Ojo Alamo- 1133
 Kirtland- 1169
 Fruitland- 2413
 Fruitland Coal Top- 2609
 Fruitland Coal Base- 2790
 Intermediate TD- 2599
 Total Depth- 2800
 Pictured Cliffs- 2803

Logging Program: Mud logs from intermediate to total depth.

Mud Program: Low solid non-dispersed mud from surface to total depth.

Casing Program:	Hole Size	Depth Interval	Csg. Size	Weight	Grade
	12 1/4"	0 - 200	9 5/8"	32.3#	H-40
	8 3/4"	0 - 2599	7"	20.0#	K-55
	6 1/4"	2549 - 2800	5 1/2"	15.5#	K-55
Tubing Program:		0 - 2800	2 7/8"	6.5#	J-55

Float Equipment: 9 5/8" surface casing - saw tooth guide shoe.

7" intermediate casing - guide shoe and self-fill insert float valve. Three centralizers run every other joint above shoe. Run insert float one joint above the guide shoe.

5 1/2" production liner - float shoe on bottom and a pre-drilled liner run to the 7" casing with a minimum 50' overlap. Liner hanger is a double slip grip type.

Wellhead Equipment: 9 5/8" x 7" x 2 7/8" x 11" 3000 psi xmas tree assembly.

Cementing:

9 5/8" surface casing - cement with 106 sacks of class "B" cement with 1/4# flocele/sack and 3% calcium chloride (125 cu ft. of slurry, 100% excess to circulate to surface). WOC 12 hours. Test casing to 600 psi for 30 minutes.

7" intermediate casing - lead with 167 sacks of 65/35 class "B" poz with 6% gel, 2% calcium chloride and 1/2 cu.ft. Perlite/sack (10.3 gallons of water/sack) tail with 100 sacks of class "B" with 2% calcium chloride. 441 cu ft. of slurry, 100% excess to cover the Ojo Alamo. Run temperature survey at 8 hours. WOC 12 hours. Test casing to 1500 psi for 30 minutes.

5 1/2" liner - do not cement.

The Fruitland coal formation will be completed.

A 3000 psi WP and 6000 psi test double gate preventer equipped with blind and pipe rams will be used for blow out prevention on this well. This gas is dedicated.

The W/2 of Section 12 is dedicated to this well.

Submit to Appropriate
District Office
State Lease - 4 copies
Fee Lease - 3 copies

State of New Mexico
Energy, Minerals and Natural Resources Department

Form C-102
Revised 1-1-89

OIL CONSERVATION DIVISION

P.O. Box 2088

Santa Fe, New Mexico 87504-2088

DISTRICT I

P.O. Box 1980, Hobbs, NM 88240

DISTRICT II

P.O. Drawer DD, Artesia, NM 88210

DISTRICT III

1000 Rio Brazos Rd., Aztec, NM 87410

WELL LOCATION AND ACREAGE DEDICATION PLAT

All Distances must be from the outer boundaries of the section

Operator Southland Royalty Company			Lease Davis (SF-077648)		Well No. 502
Unit Letter K	Section 12	Township 31 North	Range 12 West	County San Juan	
Actual Footage Location of Well: 2085 feet from the South line and 1330 feet from the West line					
Ground level Elev. 6260	Producing Formation Fruitland Coal		Pool Basin	Dedicated Acreage: 320.276 Acres	

1. Outline the acreage dedicated to the subject well by colored pencil or hatchure marks on the plat below.
2. If more than one lease is dedicated to the well, outline each and identify the ownership thereof (both as to working interest and royalty).
3. If more than one lease of different ownership is dedicated to the well, have the interest of all owners been consolidated by communitization, unitization, force-pooling, etc.?
☐ Yes ☐ No If answer is "yes" type of consolidation _____
If answer is "no" list the owners and tract descriptions which have actually been consolidated. (Use reverse side of this form if necessary.) _____
No allowable will be assigned to the well until all interests have been consolidated (by communitization, unitization, forced-pooling, or otherwise) or until a non-standard unit, eliminating such interest, has been approved by the Division.

Reissued to show moved location.

OPERATOR CERTIFICATION

I hereby certify that the information contained herein is true and complete to the best of my knowledge and belief.

Signature

Peggy Bradfield

Printed Name

Regulatory Affairs

Position

Southland Royalty Co.
Company

Date

4-10-89

SURVEYOR CERTIFICATION

I hereby certify that the well location shown on this plat was plotted from field notes or actual surveys made by me or under my supervision, and that the same is true and correct to the best of my knowledge and belief.

3-18-89

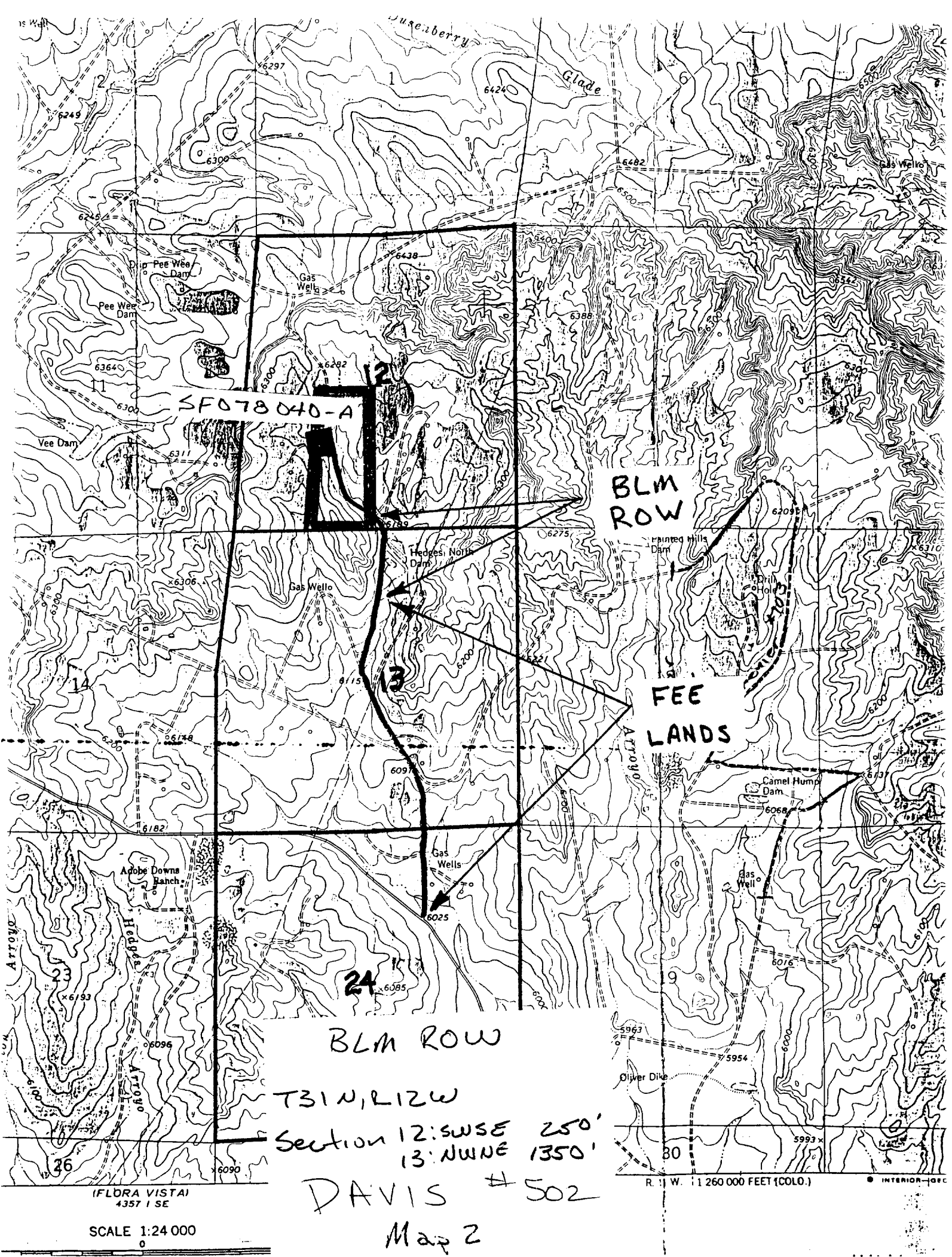
Date Surveyed

Neale C. Edwards

Signature & Seal of
Professional Surveyor

Certificate No.

6857 LAND SURVEY



SF078040-A

BLM
ROW

FEE
LANDS

BLM ROW

T31N, R12W

Section 12: SWSE 250'
13: NWNE 1350'

DAVIS #502

Map 2

(FLORA VISTA)
4357 1 SE

SCALE 1:24 000

R. 1 W. 1 260 000 FEET (COLO.)

INTERIOR-sec