

UNITED STATES
DEPARTMENT OF THE INTERIOR
BUREAU OF LAND MANAGEMENT

RECEIVED
JUN 14 1989
BUREAU OF LAND MANAGEMENT
FARMINGTON RESOURCE CENTER

APPLICATION FOR PERMIT TO DRILL, DEEPEN, OR PLUG BACK

1a. TYPE OF WORK
DRILL

1b. TYPE OF WELL
GAS

2. OPERATOR
SOUTHLAND ROYALTY CO.

3. ADDRESS & PHONE NO. OF OPERATOR
P O BOX 4289
FARMINGTON, NM 87499

4. LOCATION OF WELL
1065'N 1475'E

5. LEASE NUMBER
SF-077648

6. IF INDIAN, ALL. OR TRIBE NAME

7. UNIT AGREEMENT NAME
DAVIS

8. FARM OR LEASE NAME
DAVIS

9. WELL NO.
504

10. FIELD, POOL, OR WILDCAT
BASIN FRUITLAND COAL

11. SEC. T. R. M OR BLK.
B SEC. 11 T31N R12W NMPM

12. COUNTY
SAN JUAN

13. STATE
NM

14. DISTANCE IN MILES FROM NEAREST TOWN
7 MILES FROM AZTEC

15. DISTANCE FROM PROPOSED LOCATION TO NEAREST PROPERTY OR LEASE LINE.
1065'

16. ACRES IN LEASE
2860'

17. ACRES ASSIGNED TO WELL
E/ 305.96

18. DISTANCE FROM PROPOSED LOCATION TO NEAREST WELL DR. COMPL., OR APPLIED FOR ON THIS LEASE.
300'

19. PROPOSED DEPTH
2860'

20. ROTARY OR CABLE TOOLS
ROTARY

21. ELEVATIONS (DF, FT, GR, ETC.)
6320'GL

22. APPROX. DATE WORK WILL START

DRILLING OPERATIONS AUTHORIZED ARE
SUBJECT TO COMPLIANCE WITH ATTACHED
"GENERAL REQUIREMENTS"

23. PROPOSED CASING AND CEMENTING PROGRAM

*SEE OPERATIONS PLAN

RECEIVED

JUL 03 1989

24. AUTHORIZED BY: *[Signature]*
REGULATORY AFFAIRS

OIL CON. DIST.

6-14-89
DATE

PERMIT NO. _____ APPROVAL DATE _____

APPROVED BY _____ TITLE _____ DATE _____

APPROVED
AS A _____

JUN 28 1989

NOTE: THIS FORMAT IS ISSUED IN LIEU OF US BLM FORM 3160 AREA MANAGER

Submit to Approprate
District Office
State Lease - 4 copies
Fee Lease - 3 copies

State of New Mexico
Energy, Minerals and Natural Resources Department

Form C-102
Revised 1-1-89

OIL CONSERVATION DIVISION

P.O. Box 2088
Santa Fe, New Mexico 87504-2088

DISTRICT I
P.O. Box 1980, Hobbs, NM 88240

DISTRICT II
P.O. Drawer DD, Artesia, NM 88210

DISTRICT III
1000 Rio Brazos Rd., Aztec, NM 87410

WELL LOCATION AND ACREAGE DEDICATION PLAT

All Distances must be from the outer boundaries of the section

Operator Southland Royalty Company			Lease Davis (SF-077648)		Well No. 504
Unit Letter B	Section 11	Township 31 North	Range 12 West	County San Juan	
Actual Footage Location of Well: 1065 feet from the North line and 1475 feet from the East line					
Ground level Elev. 6320'		Producing Formation Fruitland Coal		Pool Basin	Dedicated Acreage: 305.96 Acres

1. Outline the acreage dedicated to the subject well by colored pencil or hectare marks on the plat below.
2. If more than one lease is dedicated to the well, outline each and identify the ownership thereof (both as to working interest and royalty).
3. If more than one lease of different ownership is dedicated to the well, have the interest of all owners been consolidated by communitization, unitization, force-pooling, etc.?
☐ Yes ☐ No If answer is "yes" type of consolidation _____
If answer is "no" list the owners and tract descriptions which have actually been consolidated. (Use reverse side of this form if necessary). _____
No allowable will be assigned to the well until all interests have been consolidated (by communitization, unitization, forced-pooling, or otherwise) or until a non-standard unit, eliminating such interest, has been approved by the Division.

OPERATOR CERTIFICATION

I hereby certify that the information contained herein is true and complete to the best of my knowledge and belief.

Peggy Bradfield
Signature

Peggy Bradfield
Printed Name

Regulatory Affairs
Position

Southland Royalty
Company

Date
6-14-89

SURVEYOR CERTIFICATION

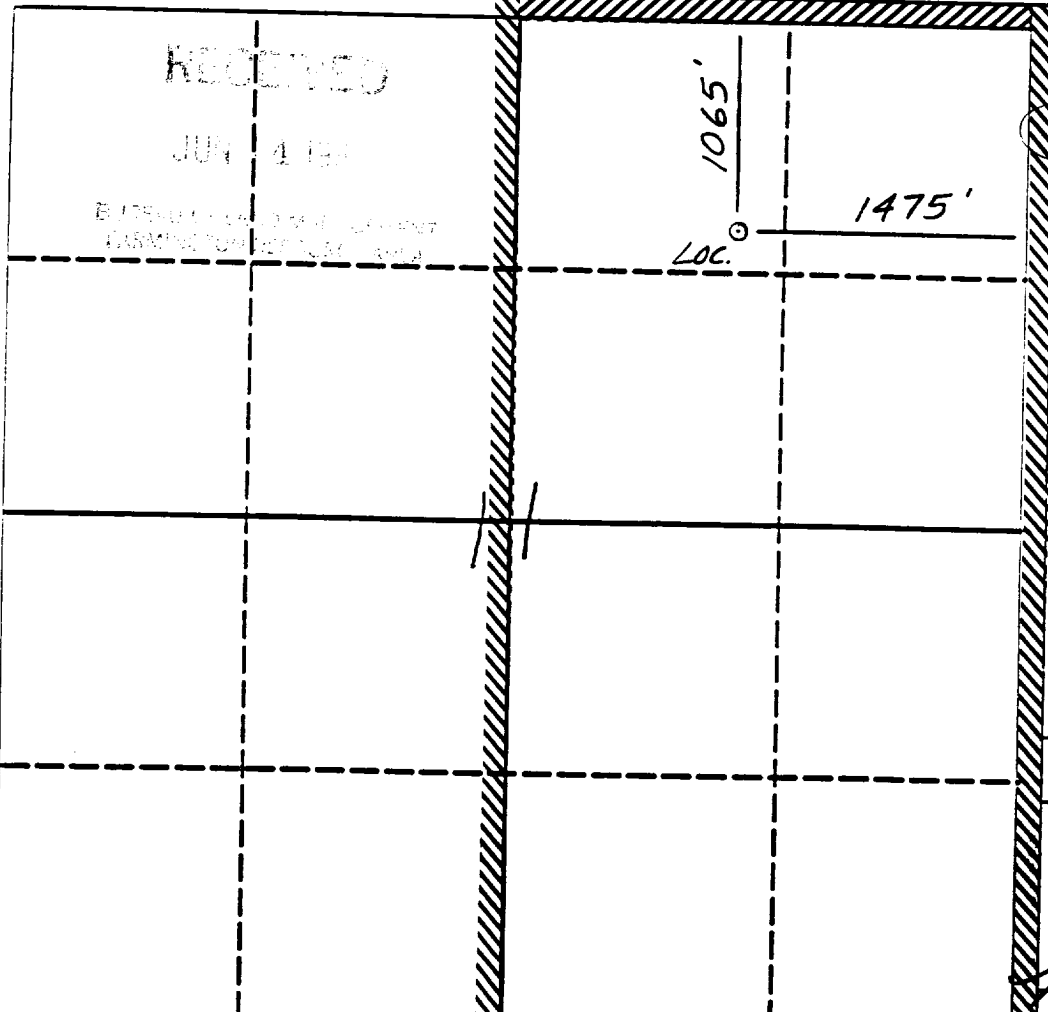
I hereby certify that the well location shown on this plat was plotted from field notes, actual surveys made by me or under my supervision, and that the same is true and correct to the best of my knowledge and belief.

5-9-89
Date Surveyed
Neale C. Edwards

Signature of Sealer
Professional Surveyor

REGISTERED LAND SURVEYOR

Certificate No.
6857



0 330 660 990 1320 1650 1980 2310 2640 2000 1500 1000 500 0

Well Name: 504 DAVIS
 Sec. 11 T31N R12W
 BASIN FRUITLAND COAL

1065'N 1475'E
 SAN JUAN NEW MEXICO
 Elevation 6320'GL

Formation tops: Surface- NACIMIENTO
 Ojo Alamo- 1950
 Kirtland- 2025
 Fruitland- 2475
 Fruitland Coal Top- 2660
 Fruitland Coal Base- 2845
 Intermediate TD- 2640
 Total Depth- 2860
 Pictured Cliffs- 2878

Logging Program: Mud logs from intermediate to total depth.

Mud Program:	Interval	Type	Weight	Visc.	Fl. Loss
	0 - 200	Spud	8.4 - 8.9	40-50	no control
	200 - 2640	Non-dispersed	8.4 - 9.1	30-60	no control
	2640 - 2860	Formation Water	8.4		no control

Casing Program:	Hole Size	Depth Interval	Csg. Size	Weight	Grade
	12 1/4"	0 - 200	9 5/8"	32.3#	H-40
	8 3/4"	0 - 2640	7"	20.0#	K-55
	6 1/4"	2590 - 2860	5 1/2"	15.5#	K-55
Tubing Program:		0 - 2860	2 7/8"	6.5#	J-55

Float Equipment: 9 5/8" surface casing - saw tooth guide shoe.

7" intermediate casing - guide shoe and self-fill insert float valve. Three centralizers run every other joint above shoe. Run insert float one joint above the guide shoe.

5 1/2" production casing - float shoe on bottom and a pre-drilled liner run to the 7" casing with a minimum 50' overlap. Liner hanger is a double slip grip type.

Wellhead Equipment: 9 5/8" x 7" x 2 7/8" x 11" 3000 psi xmas tree assembly.

Cementing:

9 5/8" surface casing - cement with 106 sacks of class "B" cement with 1/4# flocele/sack and 3% calcium chloride (125 cu ft. of slurry, 100% excess to circulate to surface). WOC 12 hours. Test casing to 600 psi for 30 minutes.

7" intermediate casing - lead with 46 sacks of 65/35 class "B" poz with 6% gel, 2% calcium chloride and 1/2 cu ft. Perlite/sack (10.3 gallons of water/sack) tail with 100 sacks of class "B" with 2% calcium chloride. 207 cu ft. of slurry, 100% excess to cover the Ojo Alamo. Run temperature survey at 8 hours. WOC 12 hours. Test casing to 1500 psi for 30 minutes.

5 1/2" liner - do not cement.

BOP and Tests:

Surface to intermediate TD - 11" 3000 psi double gate BOP stack (Reference Figure #1). Prior to drilling out surface casing, test rams to 600 psi for 30 minutes.

Intermediate TD to TD - 7 1/16" 3000 psi double gate BOP stack (Reference Figure #2). Prior to drilling out intermediate casing, test rams to 2500 psi for 30 minutes.

Pipe rams will be actuated at least once each day and blind rams actuated once each trip to test proper functioning.

Addition Information:

The Fruitland coal formation will be completed.
This gas is dedicated.
The E/2 of Section 11 is dedicated to this well.

[illegible]