

UNITED STATES
DEPARTMENT OF THE INTERIOR
BUREAU OF LAND MANAGEMENT

APPLICATION FOR PERMIT TO DRILL, DEEPEN, OR PLUG BACK

1a. TYPE OF WORK

DRILL ☒

DEEPEN ☐

PLUG BACK ☐

b. TYPE OF WELL

OIL
WELL ☐

GAS
WELL ☒

OTHER

SINGLE
ZONE ☒

MULTIPLE
ZONE ☐

2. NAME OF OPERATOR

Northwest Pipeline Corporation

3. ADDRESS OF OPERATOR

3539 E. 30th St. - Farmington, NM 87401

4. LOCATION OF WELL (Report location clearly and in accordance with any State requirements.)*

At surface

1075' FNL & 1275' FWL NW/4, NW/4

At proposed prod. zone

same

14. DISTANCE IN MILES AND DIRECTION FROM NEAREST TOWN OR POST OFFICE*

Approximately 35 miles to Ignacio, Colorado

15. DISTANCE FROM PROPOSED*

LOCATION TO NEAREST
PROPERTY OR LEASE LINE, FT.
(Also to nearest drlg. unit line, if any)

1075'

18. DISTANCE FROM PROPOSED LOCATION*

TO NEAREST WELL, DRILLING, COMPLETED,
OR APPLIED FOR, ON THIS LEASE, FT.

± 5200'

16. NO. OF ACRES IN LEASE

N/A 2561.86

19. PROPOSED DEPTH

3195'

17. NO. OF ACRES ASSIGNED
TO THIS WELL

W/ 320

20. ROTARY OR CABLE TOOLS

Rotary

21. ELEVATIONS (Show whether DF, RT, GR, etc.)

6475' GR

This action is subject to the following:
procedural review and approval by the
Bureau of Land Management and the
Department of the Interior.

23. PROPOSED CASING AND CEMENTING PROGRAM

DRILLING OPERATIONS AUTHORIZED ARE
SUBJECT TO COMPLIANCE WITH ATTACHED
GENERAL INSTRUCTIONS

SIZE OF HOLE	SIZE OF CASING	WEIGHT PER FOOT	SETTING DEPTH
12-1/4"	9-5/8"	32.3#	200'
8-3/4"	7"	20#	3036'
6-1/4"	5-1/2"	23#	3195'

QUANTITY OF CEMENT
125 cu. ft.

170 cu. ft.

Open hole completion

The W/2 of Section 33 is dedicated to this well.

RECEIVED

JUL 19 1989

OIL CON. DIV
DIST. 3

IN ABOVE SPACE DESCRIBE PROPOSED PROGRAM: If proposal is to deepen or plug back, give data on present productive zone and proposed new productive zone. If proposal is to drill or deepen directionally, give pertinent data on subsurface locations and measured and true vertical depths. Give blowout preventer program, if any.

24.

SIGNED

Mike Turnbaugh

TITLE

Senior Engineer

DATE

12/19/88

(This space for Federal or State office use)

PERMIT NO.

APPROVAL DATE

APPROVED BY

TITLE

CONDITIONS OF APPROVAL, IF ANY:

APPROVED
AS AMENDED

DATE

JUL 14 1989

AREA MANAGER

CH-1

Held C-104 FOR NSL NMOCC

*See Instructions On Reverse Side

All distances must be from the outer boundaries of the Section.

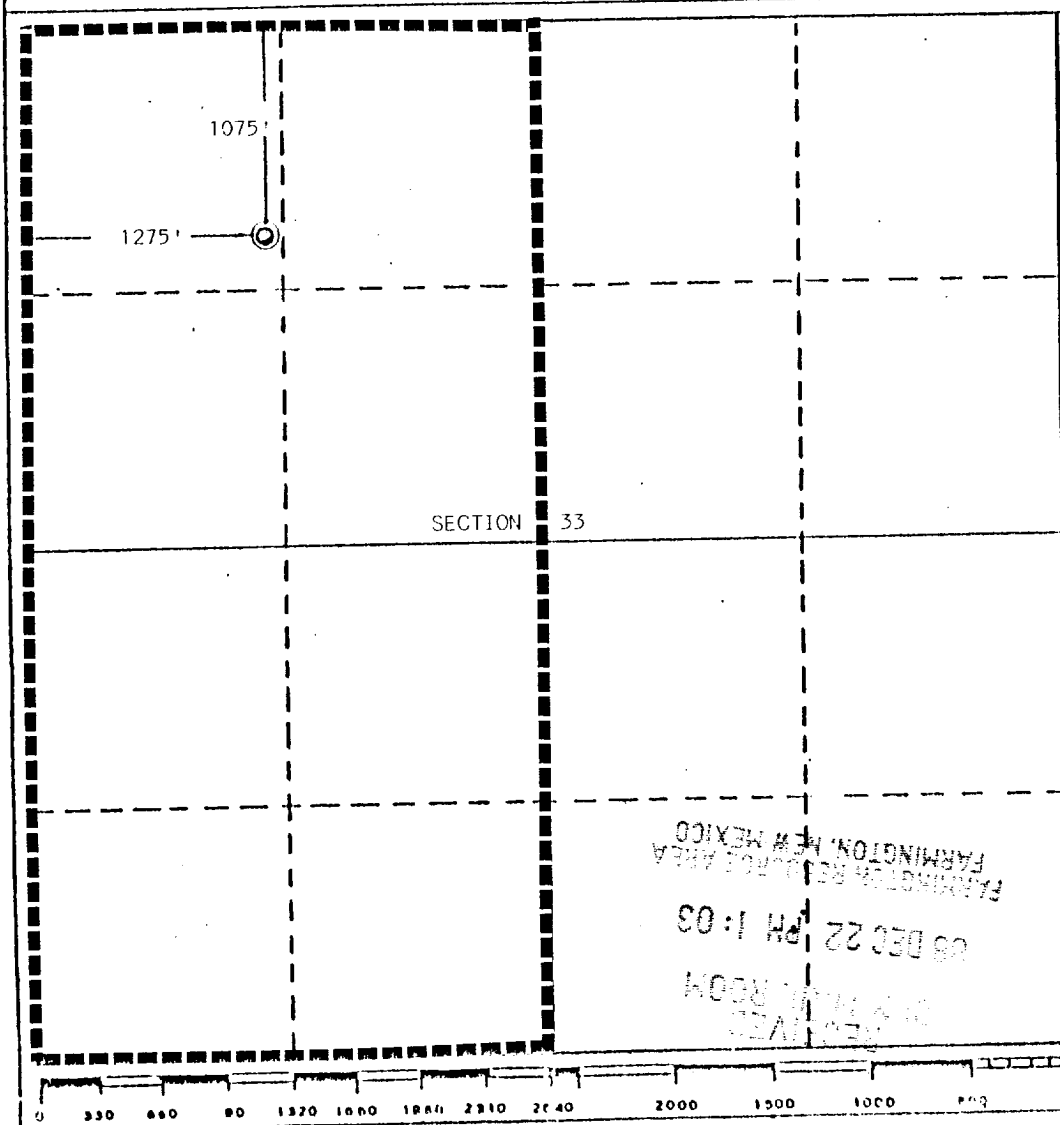
Operator Northwest Pipeline Corporation			Lease Rosa Unit		Well No. 242
Unit Letter D	Section 33	Township 32 North	Range 6 West	County San Juan	
Actual Footage Location of Well: 1075 feet from the North line and 1275 feet from the West line					
Ground Level Elev. 6475	Producing Formation Fruitland	Pool Basin Fruitland <i>CORL</i>		Dedicated Acreage: 320 Acres	

1. Outline the acreage dedicated to the subject well by colored pencil or hatchure marks on the plat below.
2. If more than one lease is dedicated to the well, outline each and identify the ownership thereof (both as to working interest and royalty).
3. If more than one lease of different ownership is dedicated to the well, have the interests of all owners been consolidated by communitization, unitization, force-pooling, etc?

☒ Yes ☐ No If answer is "yes," type of consolidation unitization

If answer is "no," list the owners and tract descriptions which have actually been consolidated. (Use reverse side of this form if necessary.)

No allowable will be assigned to the well until all interests have been consolidated (by communitization, unitization, forced-pooling, or otherwise) or until a non-standard unit, eliminating such interests, has been approved by the Division.



CERTIFICATION

I hereby certify that the information contained herein is true and complete to the best of my knowledge and belief.

Mike Turnbaugh

Name
Mike Turnbaugh
Position
Senior Engineer
Company
Northwest Pipeline Corp.
Date
11-1-88

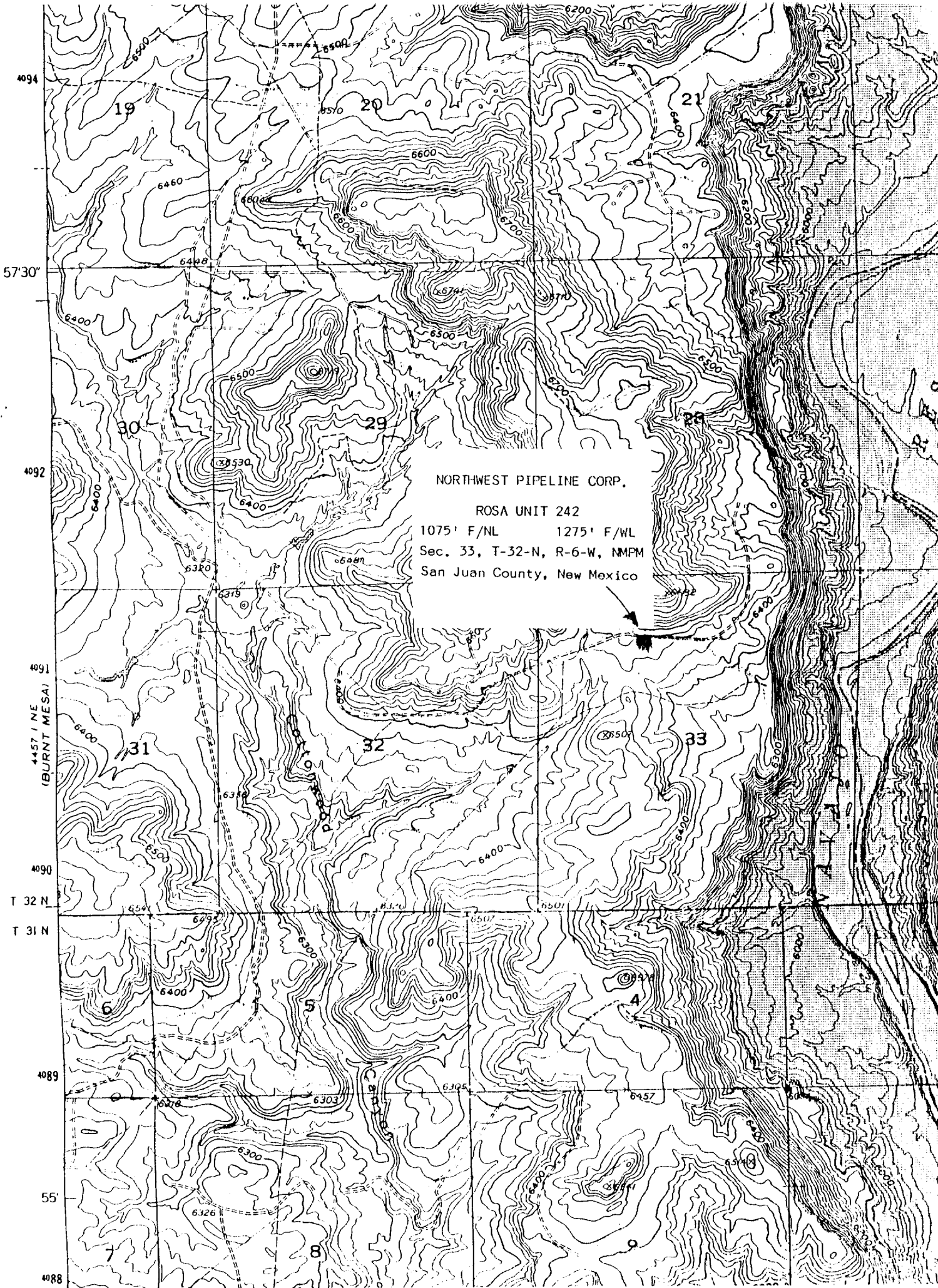
I hereby certify that the well location shown on this plat was plotted from field notes of actual surveys made by me or under my supervision, and that the same is true and correct to the best of my knowledge and belief.

Date Surveyed
October 19, 1988

Registered Professional Engineer and/or Land Surveyor

Certificate No. 5979

Edgar L. Risenhoover, L.S.



NORTHWEST PIPELINE CORP.

ROSA UNIT 242

1075' F/NL 1275' F/WL
Sec. 33, T-32-N, R-6-W, NMPM
San Juan County, New Mexico

4457 INE
(BURNT MESA)

T 32 N
T 31 N

55'