

NO. OF COPIES RECEIVED	
DISTRIBUTION	
SANTA FE	
FILE	
U.S.G.S.	
LAND OFFICE	
OPERATOR	

NEW MEXICO OIL CONSERVATION COMMISSION

Form C-103  
Supersedes Old  
C-102 and C-103  
Effective 1-1-65

5a. Indicate Type of Lease State <input checked="" type="checkbox"/> Fee <input type="checkbox"/>
5. State Oil & Gas Lease No. NM E-503-12
7. Unit Agreement Name San Juan 32-7 Unit
8. Farm or Lease Name San Juan 32-7 Unit
9. Well No. #204
10. Field and Pool, or Wildcat Basin Frt Coal Pool
12. County San Juan

**SUNDY NOTICES AND REPORTS ON WELLS**  
(DO NOT USE THIS FORM FOR PROPOSALS TO DRILL OR TO DEEPEN OR PLUG BACK TO A DIFFERENT RESERVOIR. USE "APPLICATION FOR PERMIT - 1" (FORM C-101) FOR SUCH PROPOSALS.)

1. OIL WELL ☐ GAS WELL ☒ OTHER ☐

2. Name of Operator  
Northwest Pipeline Corporation

3. Address of Operator  
3539 East 30th Street - Farmington, NM. 87401

4. Location of Well  
UNIT LETTER B 815 FEET FROM THE North LINE AND 2005 FEET FROM THE East LINE, SECTION 36 TOWNSHIP 32N RANGE 7W NMPM.

15. Elevation (Show whether DF, RT, GR, etc.)  
6469' GR

Check Appropriate Box To Indicate Nature of Notice, Report or Other Data  
NOTICE OF INTENTION TO: SUBSEQUENT REPORT OF:

PERFORM REMEDIAL WORK <input type="checkbox"/>	PLUG AND ABANDON <input type="checkbox"/>	REMEDIAL WORK <input type="checkbox"/>	ALTERING CASING <input type="checkbox"/>
TEMPORARILY ABANDON <input type="checkbox"/>	CHANGE PLANS <input checked="" type="checkbox"/>	COMMENCE DRILLING OPNS. <input type="checkbox"/>	PLUG AND ABANDONMENT <input type="checkbox"/>
PULL OR ALTER CASING <input type="checkbox"/>	OTHER <input checked="" type="checkbox"/> Change Dedicated Acreage	CASING TEST AND CEMENT JOBS <input type="checkbox"/>	OTHER <input type="checkbox"/>

17. Describe Proposed or Completed Operations (Clearly state all pertinent details, and give pertinent dates, including estimated date of starting any proposed work) SEE RULE 1193.

- 1) The dedicated acreage for this well has been changed from the east half of section 36 to the north half of Section 36.
- 2) The 7" 20#, K-55 casing will be cemented to surface as per NMOCC request.

**RECEIVED**  
OCT 03 1989  
OIL CON. DIV  
DIST. 3

18. I hereby certify that the information above is true and complete to the best of my knowledge and belief.

SIGNED J.R. Vaughan TITLE Prod. & Drlg. Engineer DATE 9-27-89

APPROVED BY Emil Bessel TITLE DEPUTY OIL & GAS INSPECTOR, DIST. #3 DATE OCT 10 1989

CONDITIONS OF APPROVAL, IF ANY:

Submit to Appropriate  
District Office  
State Lease - 4 copies  
Fee Lease - 3 copies

DISTRICT I  
P.O. Box 1980, Hobbs, NM 88240

DISTRICT II  
P.O. Drawer DD, Artesia, NM 88210

DISTRICT III  
1000 Rio Brazos Rd., Aztec, NM 87410

State of New Mexico  
Energy, Minerals and Natural Resources Department

# OIL CONSERVATION DIVISION

P.O. Box 2088  
Santa Fe, New Mexico 87504-2088

WEST PIPELINE  
CORPORATION

JUN 29 1989

Form C-102  
Revised 1-1-89

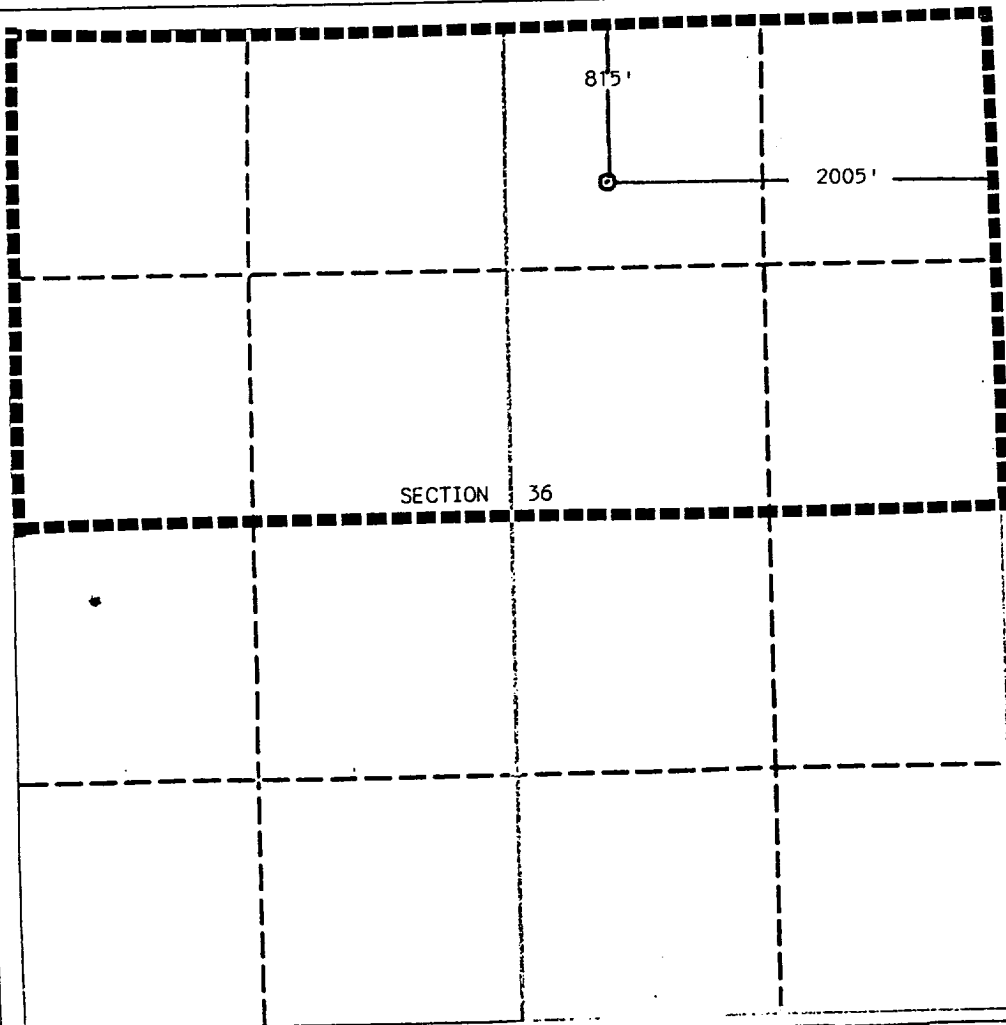
## PRODUCTION AND DRILLING

### WELL LOCATION AND ACREAGE DEDICATION PLAT

All Distances must be from the outer boundaries of the section

Operator Northwest Pipeline Corporation			Lease San Juan 32-7		Well No. 204
Unit Letter B	Section 36	Township 32 North	Range 7 West	County Rio Arriba	
Actual Footage Location of Well: 815 feet from the North line and 2005 feet from the East line					
Ground Level Elev. 6469	Producing Formation Fruitland	Pool Basin Fruitland Pool		Dedicated Acreage: 320 Acres	

- Outline the acreage dedicated to the subject well by colored pencil or hatchure marks on the plat below.
- If more than one lease is dedicated to the well, outline each and identify the ownership thereof (both as to working interest and royalty).
- If more than one lease of different ownership is dedicated to the well, have the interest of all owners been consolidated by communitization, unitization, force-pooling, etc.?  
☒ Yes ☐ No If answer is "yes" type of consolidation Unitization  
If answer is "no" list the owners and tract descriptions which have actually been consolidated. (Use reverse side of this form if necessary.)  
No allowable will be assigned to the well until all interests have been consolidated (by communitization, unitization, forced-pooling, or otherwise) or until a non-standard unit, eliminating such interest, has been approved by the Division.



#### OPERATOR CERTIFICATION

I hereby certify that the information contained herein is true and complete to the best of my knowledge and belief.

Signature Jeff Vaughan  
Printed Name Jeff Vaughan  
Position Engineer  
Company Northwest Pipeline Corp.  
Date July 10, 1989

#### SURVEYOR CERTIFICATION

I hereby certify that the well location shown on this plat was plotted from field notes of actual surveys made by me or under my supervision, and that the same is true and correct to the best of my knowledge and belief.

Date Surveyed July 10, 1989

Signature Edgar Risenhoover  
Professional Seal  
NEW MEXICO  
5979  
Certificate No. 5979  
Edgar Risenhoover, L.S.