

CONFIDENTIAL

20-042-01772

Form 3160--3
(November 1983)
(formerly 9--331C)SUBMIT IN TRIPPLICATE*
(Other instructions on
reverse side)Form approved.
Budget Bureau No. 1004-0136
Expires August 31, 1985UNITED STATES
DEPARTMENT OF THE INTERIOR
BUREAU OF LAND MANAGEMENT

APPLICATION FOR PERMIT TO DRILL, DEEPEN, OR PLUG BACK

1a. TYPE OF WORK

DRILL ☒DEEPEN ☐PLUG BACK ☐

b. TYPE OF WELL

OIL
WELL ☐GAS
WELL ☒OTHER ☐SINGLE
ZONE ☒MULTIPLE
ZONE ☐

2. NAME OF OPERATOR

Richmond Petroleum Inc.

(214) 720-7730

3. ADDRESS OF OPERATOR

2651 N. Harwood, Suite 360, Dallas, Tx. 75201

4. LOCATION OF WELL (Report location clearly and in accordance with any State requirements)

At surface

840' FNL & 840' FEL (NENE)

At proposed prod. zone

Same

AUG 01 1989

14. DISTANCE IN MILES AND DIRECTION FROM NEAREST TOWN OR POST OFFICE*

20 air miles NNE of Blanco, NM

IL CON. DIV.

16. DISTANCE FROM PROPOSED*

LOCATION TO NEAREST
PROPERTY OR LEASE LINE, FT.
(Also to nearest drlg. unit line, if any)

840'

16. NO. OF ACRES IN

640

17. NO. OF ACRES ASSIGNED
TO THIS WELL

320

18. DISTANCE FROM PROPOSED LOCATION*

TO NEAREST WELL, DRILLING, COMPLETED,
OR APPLIED FOR, ON THIS LEASE, FT.

126'

19. PROPOSED DEPTH

3,800' 3780

20. ROTARY OR CABLE TOOLS

Rotary

21. ELEVATIONS (Show whether DF, RT, GR, etc.)

6,782' ungraded ground

22. APPROX. DATE WORK WILL START*

July 31, 1989

23. "GENERAL REQUIREMENTS"

PROPOSED CASING AND CEMENTING PROGRAM

This action is subject to technical and
procedural review pursuant to 43 CFR 3165.3
and appeal QUANTITY OF CEMENT, SEC. 14.

SIZE OF HOLE

SIZE OF CASING

WEIGHT PER FOOT

SETTING DEPTH

12-1/4"

9-5/8"

36* (J-55)

240'

8-3/4"

7"

20* (K-55)

3,200'

6-1/4"

5-1/2"

23* (N-80)

3,680'

6-1/4"

4-1/2"

1.6* (N-80)

3,780'

~130 SX or to surface

~360 SX or to surface

~80 SX, or alt. liner may be

~80 SX

TIGHT HOLE. PLEASE KEEP CONFIDENTIAL.

1. APD is doubling as a BLM road right-of-way application. Application is for an existing crowned and ditched road. Right-of-way dimensions are ~500' long, 30' wide maximum disturbance, and 20' wide running surface. Legal location is NENW and NWNE Sec. 26, T. 32 N., R. 8 W., San Juan County, NM.
2. Well was originally named Richmond-Schalk #1 on Notice of Staking and at onsite. Name subsequently changed to Federal 32-8-26 #1.
3. Per NMOCD Rule 102(c), a copy of this APD has been mailed to Schalk Development Co., operator of 2 wells in this (NENE) quarter-quarter. Well site has been inspected by Jack Evans, Schalk Development Co. Prod. Supt.

IN ABOVE SPACE DESCRIBE PROPOSED PROGRAM: If proposal is to deepen or plug back, give data on present productive zone and proposed new productive zone. If proposal is to drill or deepen directionally, give pertinent data on subsurface locations and measured and true vertical depths. Give blowout preventer program, if any.

SIGNED

Mike Hogue

TITLE

President

DATE

7-20-89

(This space for Federal or State office use)

cc: BLM(4+2 for OCD), Delventhal(1), Richmond (3), Schalk Dev.(1)

PERMIT NO.

APPROVAL DATE

APPROVED
AS AMENDED

APPROVED BY

TITLE

CONDITIONS OF APPROVAL, IF ANY:

JUL 31 1989

AREA MANAGER

*See Instructions On Reverse Side

Title 18 U.S.C. Section 1001, makes it a crime for any person knowingly and willfully to make to any department or agency of the United States any false, fictitious or fraudulent statements or representations as to any matter within its jurisdiction.

NEW MEXICO OIL CONSERVATION COMMISSION
WELL LOCATION AND ACREAGE DEDICATION PLAT

Supersedes C-120
Effective 1-1-65

All distances must be from the outer boundaries of the Section.

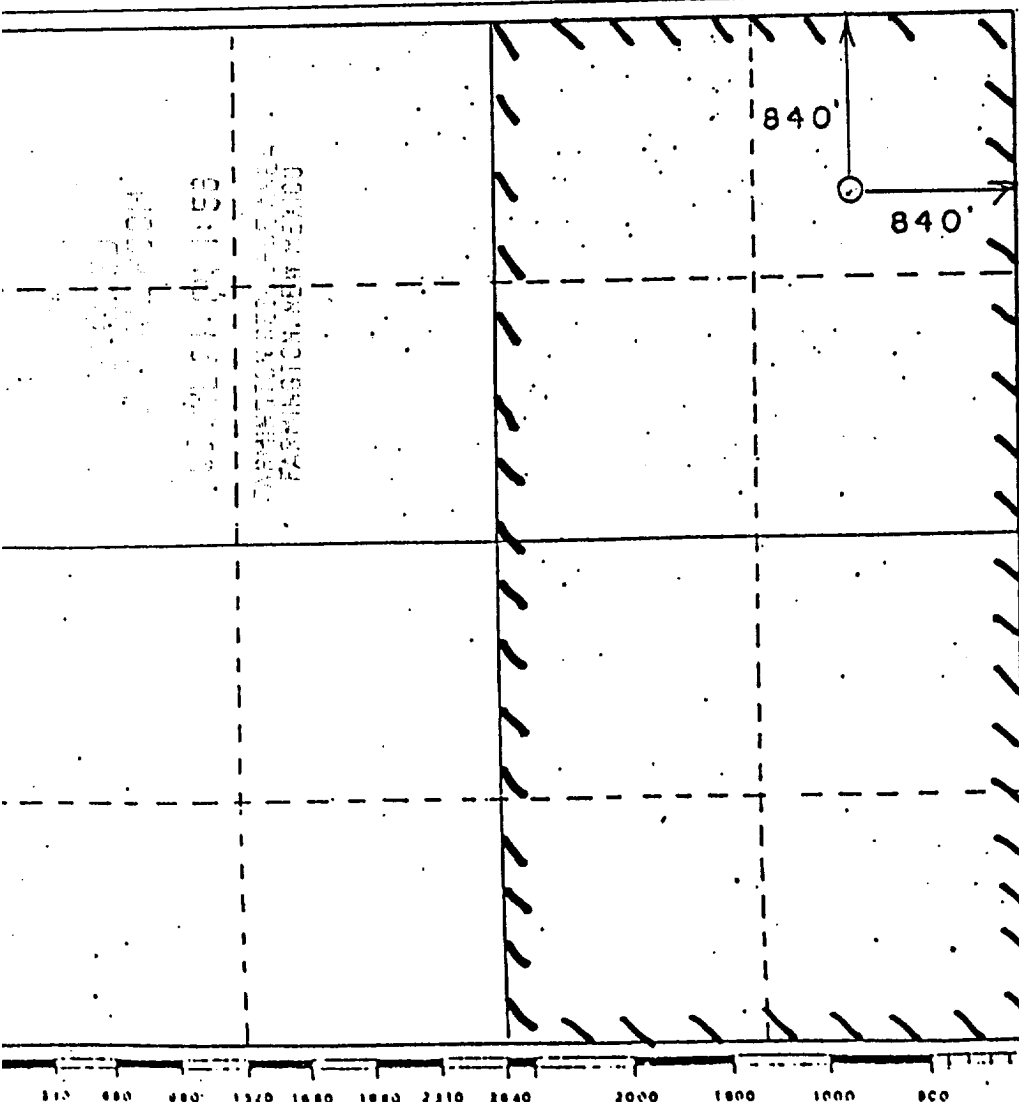
Operator Richmond Petroleum Inc		Lease Federal 32-8-26		Well No. #1
Letter A	Section 26	Township 32 N	Range 8 W	County San Juan
Well Location of Well: 840 feet from the North line and 840 feet from the East line				
Surface Elev. 6782'	Producing Formation Fruitland	Pool Basin-Fruitland Coal Gas	Dedicated Acreage 320 Acres	

- Outline the acreage dedicated to the subject well by colored pencil or hatchure marks on the plat below.
1. If more than one lease is dedicated to the well, outline each and identify the ownership thereof (both as to working interest and royalty).
2. If more than one lease of different ownership is dedicated to the well, have the interests of all owners been consolidated by communitization, unitization, force-pooling, etc?

☐ Yes ☐ No If answer is "yes," type of consolidation _____

If answer is "no," list the owners and tract descriptions which have actually been consolidated. (Use reverse side of this form if necessary.) _____

No allowable will be assigned to the well until all interests have been consolidated (by communitization, unitization, forced-pooling, or otherwise) or until a non-standard unit, eliminating such interests, has been approved by the Commission.



CERTIFICATION

I hereby certify that the information contained herein is true and complete to the best of my knowledge and belief.

Mike Hogue
Name
Mike Hogue
Position
President
Company
Richmond Petroleum Inc.
Date
7-20-89

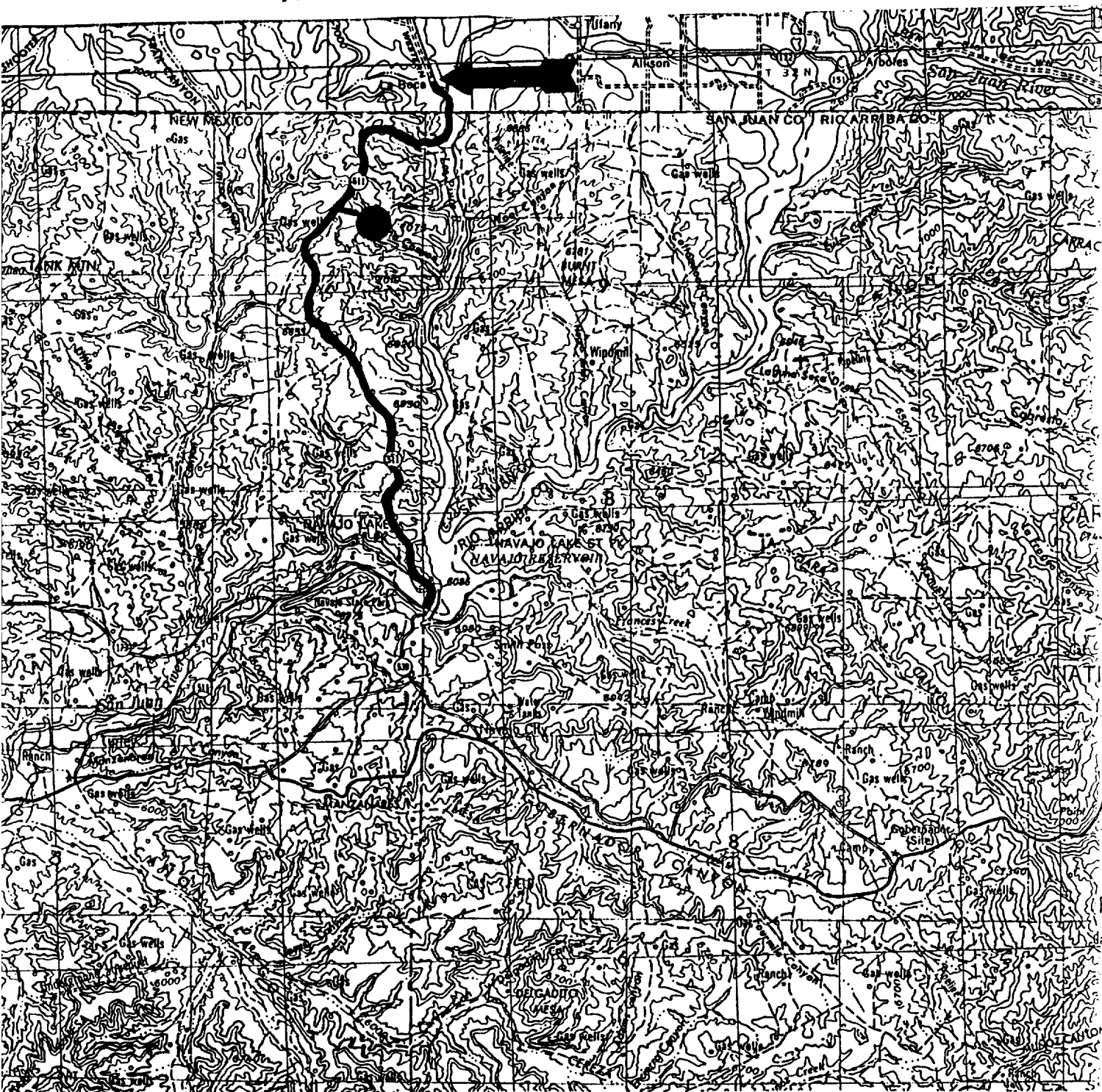
I hereby certify that the well location shown on this plat was plotted from field notes of actual surveys made by me or under my supervision, and that the same is true and correct to the best of my knowledge and belief.

Date Surveyed
7-20-89
Registered Professional Engineer and of Land Surveyor
Gerald G. Huddleston
Certificate No.
8874

Richmond Petroleum Inc.
Federal 32-8-26 #1
840' FNL & 840' FEL
Sec. 26, T. 32 N., R. 8 W.
San Juan County, New Mexico

PAGE 11

CONFIDENTIAL



Proposed Well: ●

Water Source: ←

Access Route: ~

PERMITS WEST INC.
PROVIDING PERMITS for the ENERGY INDUSTRY