

UNITED STATES
DEPARTMENT OF THE INTERIOR
BUREAU OF LAND MANAGEMENT

APPLICATION FOR PERMIT TO DRILL, DEEPEN, OR PLUG BACK

1a. TYPE OF WORK

DRILL ☒

DEEPEN ☐

PLUG BACK ☐

b. TYPE OF WELL

OIL
WELL ☐

GAS
WELL ☒

OTHER

SINGLE
ZONE ☐

MULTIPLE
ZONE ☐

2. NAME OF OPERATOR

Northwest Pipeline Corporation

3. ADDRESS OF OPERATOR

3539 East 30th Street - Farmington, NM 87401

4. LOCATION OF WELL (Report location clearly and in accordance with any State requirements.)*

At surface 1070' FSL & 1850' FWL SE/4 SW/4

At proposed prod. zone

Same

14. DISTANCE IN MILES AND DIRECTION FROM NEAREST TOWN OR POST OFFICE*

11-1/2 miles south of Ignacio, CO.

15. DISTANCE FROM PROPOSED*

LOCATION TO NEAREST
PROPERTY OR LEASE LINE, FT.
(Also to nearest drlg. unit line, if any)

1070'

16. NO. OF ACRES IN LEASE

2484.35

17. NO. OF ACRES ASSIGNED
TO THIS WELL

314.76

18. DISTANCE FROM PROPOSED LOCATION*

TO NEAREST WELL, DRILLING, COMPLETED,
OR APPLIED FOR, ON THIS LEASE, FT.

3400'

19. PROPOSED DEPTH

3258'

20. ROTARY OR CABLE TOOLS

Rotary

21. ELEVATIONS (Show whether DF, RT, GR, etc.)

6400' GR DRILLING OPERATIONS AUTHORIZED ARE

22. APPROX. DATE WORK WILL START*

8-28-89

23. SUBJECT TO COMPLIANCE WITH ATTACHED

"GENERAL REQUIREMENTS".

PROPOSED CASING AND CEMENTING PROGRAM

This action is subject to technical and
procedural review pursuant to 43 CFR 3165.3
and appeal pursuant to 43 CFR 3165.4.

| SIZE OF HOLE | SIZE OF CASING | WEIGHT PER FOOT | SETTING DEPTH | QUANTITY OF CEMENT |
|--------------|----------------|-----------------|---------------|--------------------|
| 13-1/2" | 9-5/8" | 36# K-55 | 200' | 195 cu.ft. |
| 8-3/4" | 7" | 20# K-55 | 2690' | 105 cu.ft. |
| 6-1/4" | 5-1/2" | 23# P110 | 2590'-3258' | None |

- 1) Plan to drill Fruitland Formation from 2710' to 3258' and complete open hole with a perforated liner in coal zones.
- 2) The west half of Sec. 18 is dedicated to this well.

RECEIVED
AUG 21 1989
OIL CON. DIV
DIST. 3

IN ABOVE SPACE DESCRIBE PROPOSED PROGRAM: If proposal is to deepen or plug back, give data on present productive zone and proposed new productive zone. If proposal is to drill or deepen directionally, give pertinent data on subsurface locations and measured and true vertical depths. Give blowout preventer program, if any.

24.

SIGNED

J.R. Vaughan

Prod. & Drlg. Engineer

TITLE

DATE

7-31-89

(This space for Federal or State office use)

PERMIT NO.

APPROVAL DATE

APPROVED
AS AMENDED

APPROVED BY

TITLE

CONDITIONS OF APPROVAL, IF ANY:

AUG 15 1989

AREA MANAGER

*See Instructions On Reverse Side

Submit to Appropriate
District Office
State Lease - 4 copies
Fee Lease - 3 copies

State of New Mexico
Energy, Minerals and Natural Resources Department

Form C-102
Revised 1-1-89

OIL CONSERVATION DIVISION

P.O. Box 2088
Santa Fe, New Mexico 87504-2088

DISTRICT I
P.O. Box 1980, Hobbs, NM 88240

DISTRICT II
P.O. Drawer DD, Artesia, NM 88210

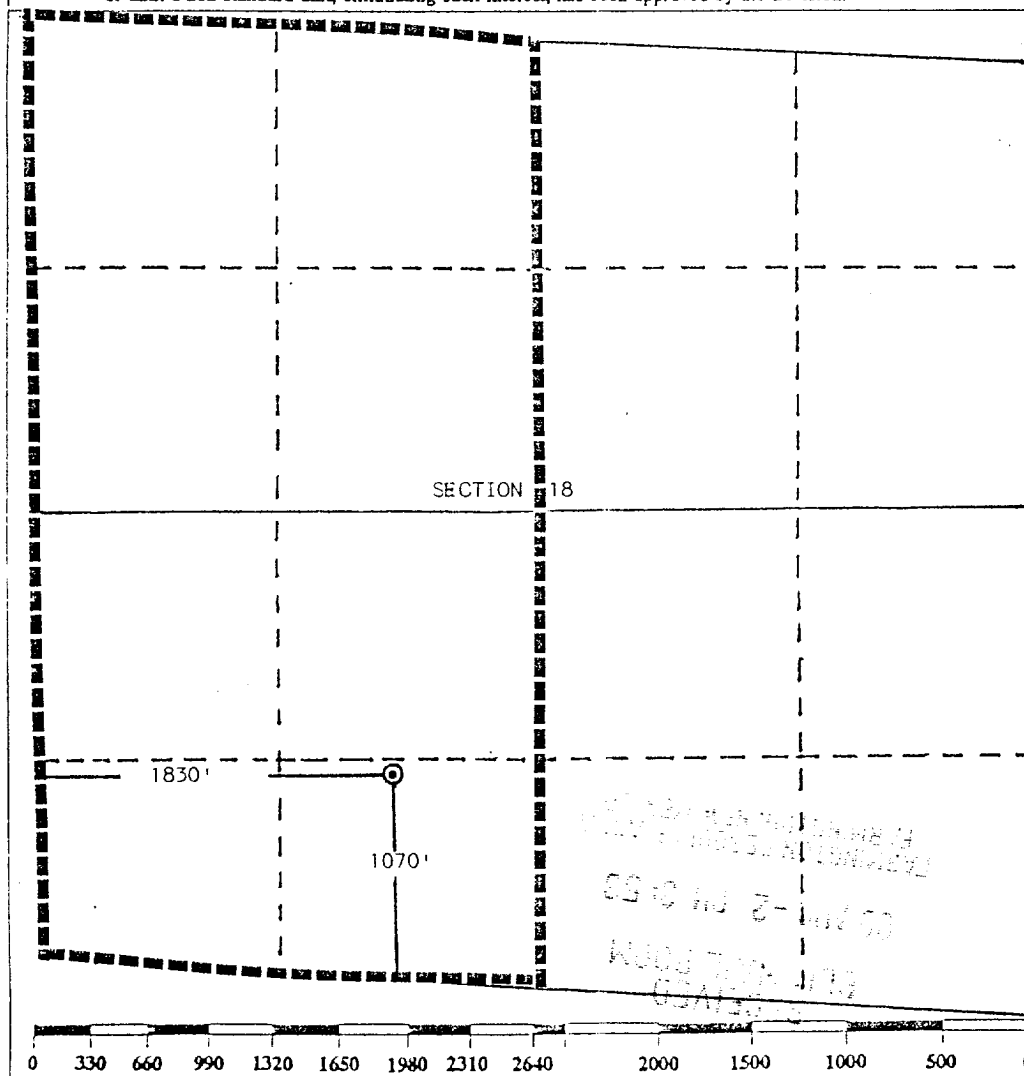
DISTRICT III
1000 Rio Brazos Rd., Aztec, NM 87410

WELL LOCATION AND ACREAGE DEDICATION PLAT

All Distances must be from the outer boundaries of the section

| | | | | | |
|---|---------------------------------------|----------------------|------------------------|------------------------------------|-----------------|
| Operator Northwest Pipeline Corporation | | | Lease San Juan 32-7 | | Well No. 202 |
| Unit Letter N | Section 18 | Township 32 North | Range 7 West | County San Juan Rio Arriba | NMPM |
| Actual Footage Location of Well: 1070' feet from the South line and 1830 feet from the West line | | | | | |
| Ground level Elev. 6400 | Producing Formation FRUITLAND COAL | | Pool BASIN | Dedicated Acreage: 314.76 Acres | |

1. Outline the acreage dedicated to the subject well by colored pencil or hatchure marks on the plat below.
2. If more than one lease is dedicated to the well, outline each and identify the ownership thereof (both as to working interest and royalty).
3. If more than one lease of different ownership is dedicated to the well, have the interest of all owners been consolidated by communitization, unitization, force-pooling, etc.?
☒ Yes ☐ No If answer is "yes" type of consolidation UNITIZATION
If answer is "no" list the owners and tract descriptions which have actually been consolidated. (Use reverse side of this form if necessary.)
No allowable will be assigned to the well until all interests have been consolidated (by communitization, unitization, forced-pooling, or otherwise) or until a non-standard unit, eliminating such interest, has been approved by the Division.



OPERATOR CERTIFICATION

I hereby certify that the information contained herein is true and complete to the best of my knowledge and belief.

Signature
Jeffrey R. Vaughan
Printed Name
Jeffrey R. Vaughan
Position
Prod. & Drilling Engineer
Company
Northwest Pipeline Corp.
Date
July 27, 1989

SURVEYOR CERTIFICATION

I hereby certify that the well location shown on this plat was plotted from field notes of actual surveys made by me or under my supervision, and that the same is true and correct to the best of my knowledge and belief.

Date Surveyed
July 24, 1989

Signature & Seal of
Professional Surveyor
Edgar L. Risenhoover
Certification No. 5979
Edgar L. Risenhoover, L.S.
REGISTERED LAND SURVEYOR
NEW MEXICO
5979

1000/10000 N

000000
1000000

4095

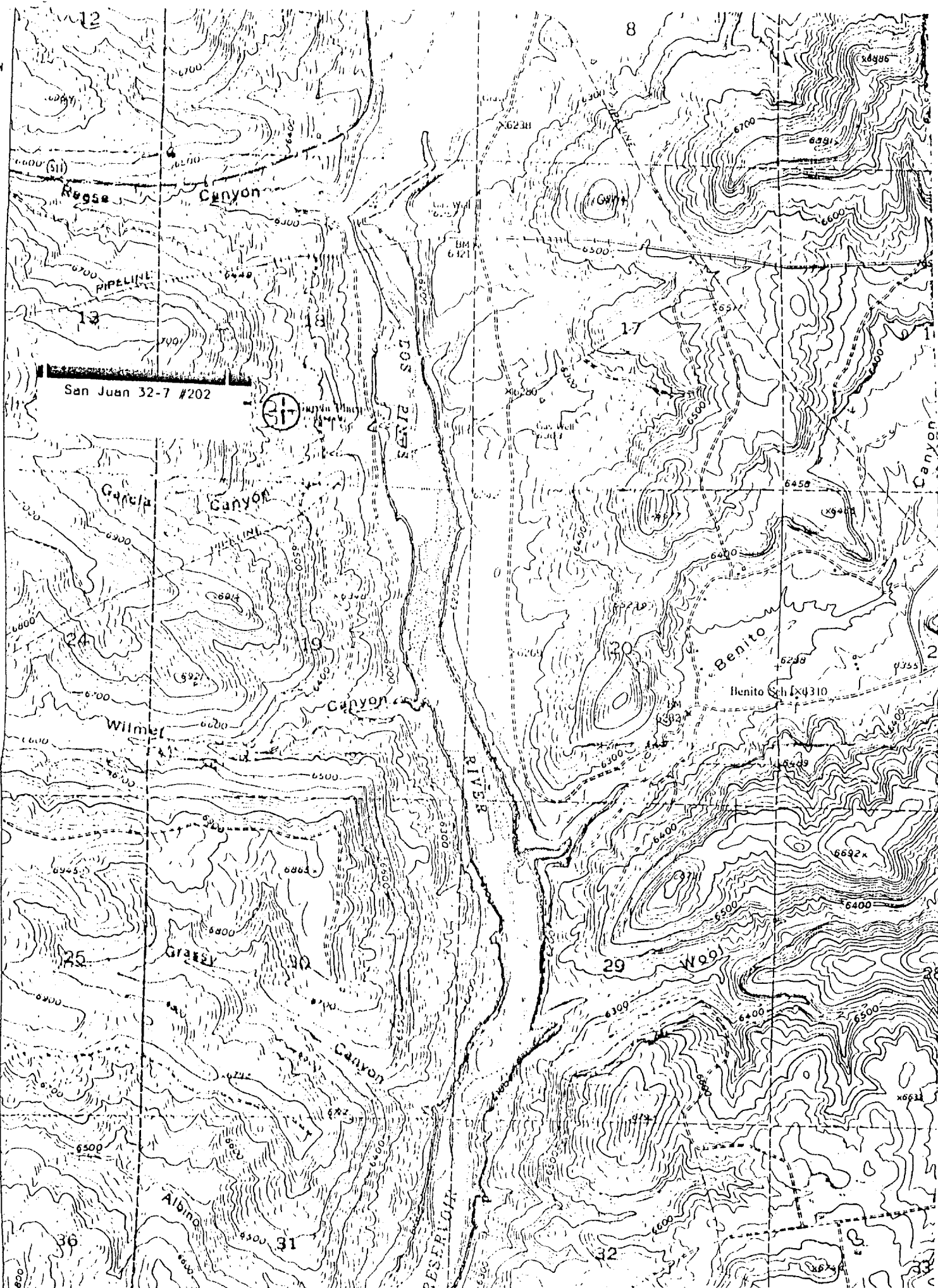
4094

5730"

4093

4092

4457.1
10 DAK 1:62500



$$\begin{array}{r}
 1 \\
 38.71 \\
 \underline{38.70} \\
 1 \quad 21.41 \\
 77.68 \\
 \underline{138.09} \\
 116.67 \\
 \underline{38.67} \\
 78.00 \\
 \underline{160.00} \\
 314.76
 \end{array}$$