

UNITED STATES
DEPARTMENT OF THE INTERIOR
BUREAU OF LAND MANAGEMENT

(Other instructions on
reverse side)

Budget Bureau No. 1004-0136
Expires August 31, 1985

APPLICATION FOR PERMIT TO DRILL, DEEPEN, OR PLUG BACK

a. TYPE OF WORK DRILL <input checked="" type="checkbox"/> DEEPEN <input type="checkbox"/> PLUG BACK <input type="checkbox"/>				5. LEASE DESIGNATION AND SERIAL NO. SF-078543	
b. TYPE OF WELL OIL WELL <input type="checkbox"/> GAS WELL <input checked="" type="checkbox"/> OTHER <input type="checkbox"/> SINGLE ZONE <input checked="" type="checkbox"/> MULTIPLE ZONE <input type="checkbox"/>				6. IF INDIAN, ALLOTTEE OR TRIBE NAME	
c. NAME OF OPERATOR Phillips Petroleum Company				7. UNIT AGREEMENT NAME San Juan 32-7 Unit	
d. ADDRESS OF OPERATOR 300 W. Arrington, Suite 200, Farmington, N.M. 87401				8. FARM OR LEASE NAME	
e. LOCATION OF WELL (Report location clearly and in accordance with any State requirements.) At surface Unit N, 1230' FSL & 1570' FWL At proposed prod. zone Unit N, 1230' FSL & 1570' FWL				9. WELL NO. 207	
f. DISTANCE IN MILES AND DIRECTION FROM NEAREST TOWN OR POST OFFICE* 20 Miles East From Bondad				10. FIELD AND POOL, OR WILDCAT Basin Fruitland Coal	
g. DISTANCE FROM PROPOSED* LOCATION TO NEAREST PROPERTY OR LEASE LINE, FT. (Also to nearest drig. unit line, if any) 9330' FNL of 32-7 Unit				11. SEC., T., R., M., OR B.L.K. AND SURVEY OR AREA N Sec. 27, T-32-N, R-7 -W	
h. DISTANCE FROM PROPOSED LOCATION* TO NEAREST WELL, DRILLING, COMPLETED, OR APPLIED FOR, ON THIS LEASE, FT. 427' SW from #2				12. COUNTY OR PARISH San Juan	
i. DISTANCE FROM PROPOSED LOCATION* TO NEAREST WELL, DRILLING, COMPLETED, OR APPLIED FOR, ON THIS LEASE, FT. 427' SW from #2				13. STATE N.M.	
j. DISTANCE FROM PROPOSED* LOCATION TO NEAREST PROPERTY OR LEASE LINE, FT. (Also to nearest drig. unit line, if any) 9330' FNL of 32-7 Unit		k. NO. OF ACRES IN LEASE 960 AC		l. NO. OF ACRES ASSIGNED TO THIS WELL 320 AC W/2 of Section 305.10	
m. DISTANCE FROM PROPOSED LOCATION* TO NEAREST WELL, DRILLING, COMPLETED, OR APPLIED FOR, ON THIS LEASE, FT. 427' SW from #2		n. PROPOSED DEPTH 3350(+)		o. ROTARY OR CABLE TOOLS Rotary	
p. ELEVATIONS (Show whether DP, RT, GR, etc.) 6651' (GL Unprepared) This action is subject to technical and procedural review pursuant to 43 CFR 3165.4 and appeal pursuant to 43 CFR 3165.4.				q. APPROX. DATE WORK WILL START* Upon Approval	
r. PROPOSED CEMENTING AND CEMENTING PROGRAM DRILLING OPERATIONS AUTHORIZED ARE SUBJECT TO COMPLIANCE WITH ATTACHED GENERAL REQUIREMENTS					
s. SIZE OF HOLE 12-1/4"		t. SIZE OF CASING 9-5/8"		u. WEIGHT PER FOOT 36#, K-55	
v. SIZE OF HOLE 8-1/2"		w. SIZE OF CASING 7"		x. SETTING DEPTH 250'	
y. SIZE OF HOLE 6-1/8"		z. SIZE OF CASING 5-1/2"		aa. SETTING DEPTH 3201'	
				ab. SETTING DEPTH 3101'-3350'	
				ac. QUANTITY OF CEMENT 200 sxs, Circ to Surface	
				ad. QUANTITY OF CEMENT 600 sxs, Circ to Surface	
				ae. QUANTITY OF CEMENT *	

*If the coal is cleated a 5-1/2", 23#, P-110 liner will be run in the open hole without being cemented.

*If the coal is not cleated a 5-1/2", 15.5#, K-55 liner will be run, cemented with sxs cement and the well fractured.

RECEIVED

APR 18 1990

OIL CON. DIV.
DIST. 3

Mud Program and BOP Equipment: See Attached

4. ABOVE SPACE DESCRIBE PROPOSED PROGRAM: If proposal is to deepen or plug back, give data on present productive zone and proposed new productive one. If proposal is to drill or deepen directionally, give pertinent data on subsurface locations and measured and true vertical depths. Give blowout reventer program, if any.

SIGNED L.M. Dandrea TITLE Supv. Regulatory Affairs DATE March 15, 1990

(This space for Federal or State office use)

PERMIT NO. _____ APPROVAL DATE _____

APPROVED BY _____ TITLE _____

CONDITIONS OF APPROVAL, IF ANY:

APPROVED
AS AMENDED

APR 16 1990
AREA MANAGER

*See Instructions On Reverse Side

Submit to Appropriate
District Office
State Lease - 4 copies
Fee Lease - 3 copies

State of New Mexico
Energy, Minerals and Natural Resources Department

Form C-102
Revised 1-1-89

OIL CONSERVATION DIVISION

P.O. Box 2088
Santa Fe, New Mexico 87504-2088

DISTRICT I
P.O. Box 1980, Hobbs, NM 88240

DISTRICT II
P.O. Drawer DD, Artesia, NM 88210

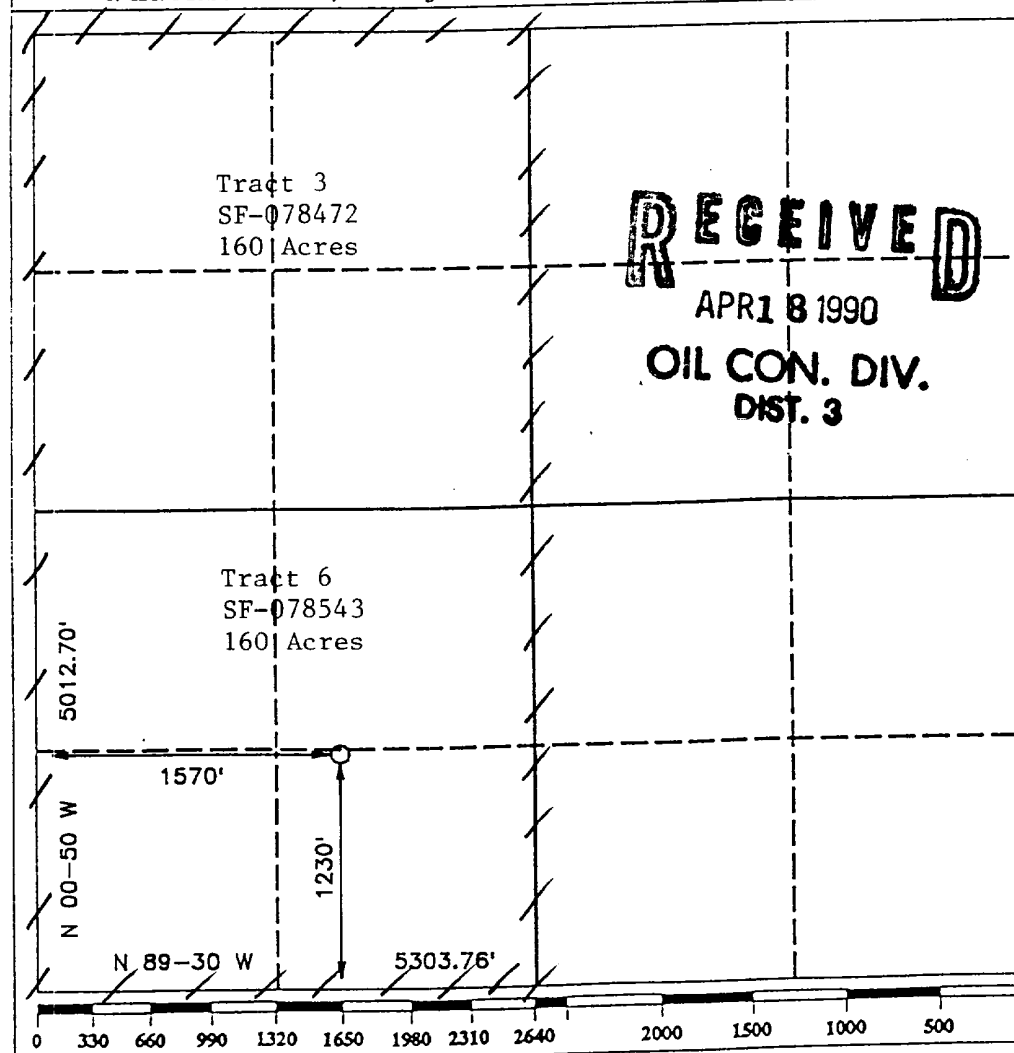
DISTRICT III
1000 Rio Brazos Rd., Aztec, NM 87410

WELL LOCATION AND ACREAGE DEDICATION PLAT

All Distances must be from the outer boundaries of the section

Operator PHILLIPS PETROLEUM		Lease SAN JUAN 32-7 UNIT		Well No. 207
Unit Letter N	Section 27	Township T.32 N.	Range R.7 W.	County SAN JUAN COUNTY
Actual Footage Location of Well: 1230 feet from the SOUTH line and 1570 feet from the WEST line				
Ground level Elev. 6651	Producing Formation Fruitland	Pool Basin Fruitland Coal Gas		Dedicated Acreage: 305.10 320 Acres

- Outline the acreage dedicated to the subject well by colored pencil or hatchure marks on the plat below.
- If more than one lease is dedicated to the well, outline each and identify the ownership thereof (both as to working interest and royalty).
- If more than one lease of different ownership is dedicated to the well, have the interest of all owners been consolidated by communization, unitization, force-pooling, etc.?
☒ Yes ☐ No If answer is "yes" type of consolidation **Unitized**
If answer is "no" list the owners and tract descriptions which have actually been consolidated. (Use reverse side of this form if necessary.)
No allowable will be assigned to the well until all interests have been consolidated (by communization, unitization, forced-pooling, or otherwise) or until a non-standard unit, eliminating such interest, has been approved by the Division.



RECEIVED
APR 18 1990
OIL CON. DIV.
DIST. 3

OPERATOR CERTIFICATION

I hereby certify that the information contained herein is true and complete to the best of my knowledge and belief.

Signature
L. M. Sanders
Printed Name
L. M. Sanders
Position
Supv. Regulatory Affairs
Company
Phillips Petroleum Co.
Date
March 15, 1990

SURVEYOR CERTIFICATION

I hereby certify that the well location shown on this plat was plotted from field notes of actual surveys made by me or under my supervision, and that the same is true and correct to the best of my knowledge and belief.

Date Surveyed
DECEMBER 12 1989
Signature & Seal of Professional Surveyor
R. HOWARD BAGGETT
Certificate No. Land Surveyor
9679

NEW MEXICO

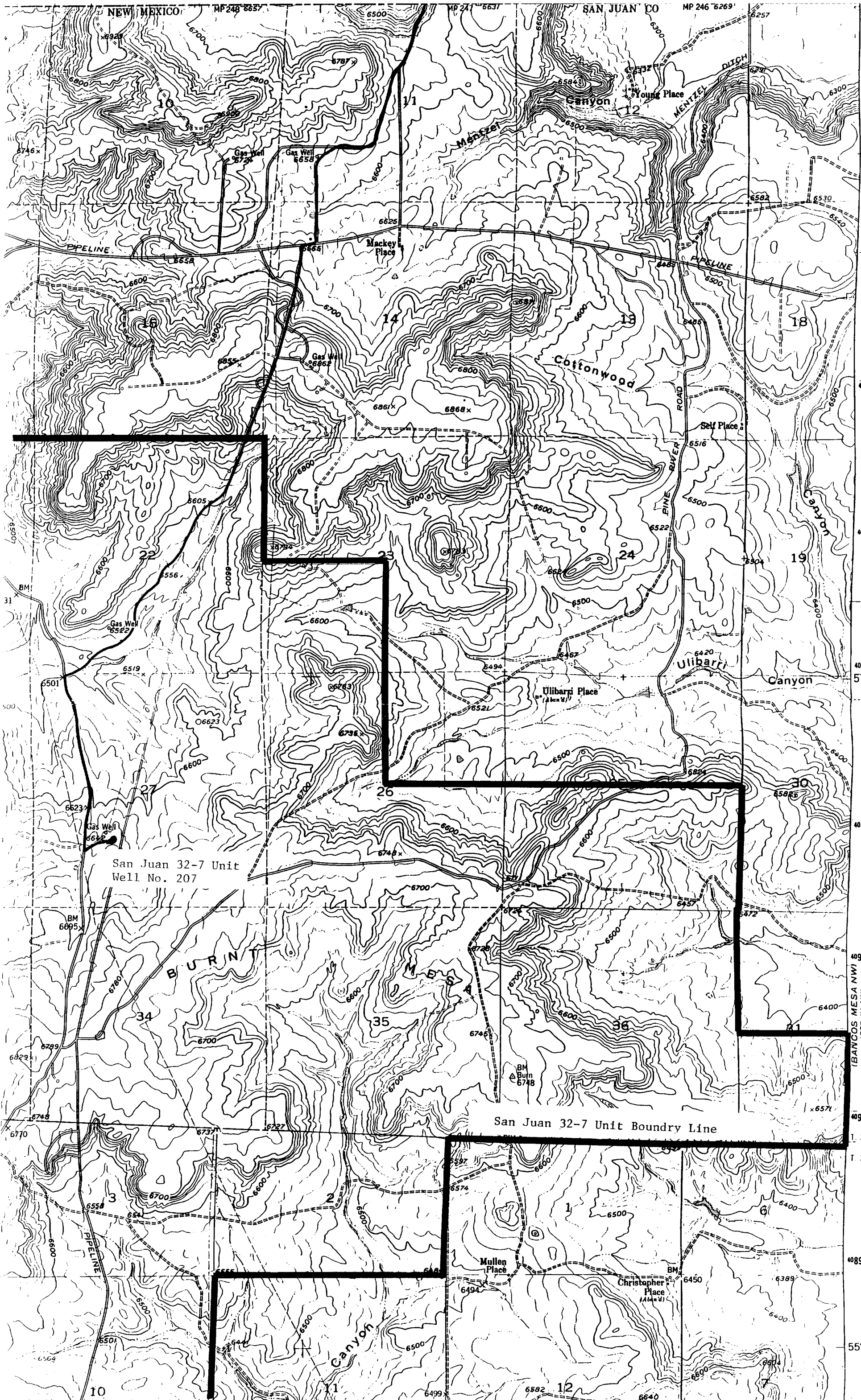
MP 248 6637

SAN JUAN CO

MP 246 6269

ALLISON COLO 2 - M

2 180 000 FEET
(WEST)



San Juan 32-7 Unit
Well No. 207

San Juan 32-7 Unit Boundry Line

(BANCOS MESA NW)
4557 IV NW

T. 32 N.
T. 31 N.

55'