

UNITED STATES
DEPARTMENT OF THE INTERIOR
BUREAU OF LAND MANAGEMENT

APPLICATION FOR PERMIT TO DRILL, DEEPEN, OR PLUG BACK

1A. TYPE OF WORK
DRILL ☒ DEEPEN ☐ PLUG BACK ☐

B. TYPE OF WELL
OIL WELL ☐ GAS WELL ☒ OTHER Coal Seam ☐ SINGLE ZONE ☒ MULTIPLE ZONE ☐

2. NAME OF OPERATOR
AMOCO Production Company ATTN: J. L. Hampton

3. ADDRESS OF OPERATOR
P. O. Box 800 Denver, Colorado 80201

4. LOCATION OF WELL (Report location clearly and in accordance with any State requirements.)*
At surface

1010' FNL, 1470' FEL NW/NE
At proposed prod. zone

14. DISTANCE IN MILES AND DIRECTION FROM NEAREST TOWN OR POST OFFICE*
same

13 miles to Aztec, NM

10. DISTANCE FROM PROPOSED*
LOCATION TO NEAREST
PROPERTY OR LEASE LINE, FT.
(Also to nearest drlg. unit line, if any) 1010'

18. DISTANCE FROM PROPOSED LOCATION*
TO NEAREST WELL, DRILLING, COMPLETED,
OR APPLIED FOR, ON THIS LEASE, FT.

21. ELEVATIONS (Show whether DF, RT, GR, etc.)
6361' GR

23. and approved by the Bureau of Land Management

SIZE OF HOLE	SIZE OF CASING	WEIGHT PER FOOT	SETTING DEPTH	QUANTITY OF CEMENT
12 1/4"	8 5/8"	24#	250'	250 cf (cement to surface)
7 7/8"	5 1/2"	17#	3346' (TD)	937 cf (cement to surface)

Notice of Staking was submitted: 3/19/90

Lease Description:

T32N-R11W
Sec.13: S/2
Sec.14: E/2 SE/4
Sec.15: W/2 SW/4
Sec.22: N/2 NW/4, SW/4
Sec.23: S/2 NE/4, NW/4 NW/4, E/2 SW/4, SE/4
Sec.24: NE/4, S/2 NW/4
Sec.26: NE/4, E/2 NW/4, SW/4, SW/4 SE/4
Sec.27: N/2

IN ABOVE SPACE DESCRIBE PROPOSED PROGRAM: If proposal is to deepen or plug back, give data on present productive zone and proposed new productive zone. If proposal is to drill or deepen directionally, give pertinent data on subsurface locations and measured and true vertical depths. Give blowout preventer program, if any.

24. J.L. Hampton
SIGNED: J.L. Hampton/CUB TITLE: Sr. Staff Admin. Supv. DATE: 4/4/90
(This space for Federal or State office use)

PERMIT NO. APPROVAL DATE

APPROVED BY: TITLE: AREA MANAGER

*See Instructions On Reverse Side

RECEIVED
MAY 21 1990
OIL CON. DIV.
DIST. 3

Submit to Appropriate
District Office
State Lease - 4 copies
Fee Lease - 3 copies

State of New Mexico
Energy, Minerals and Natural Resources Department

Form C-102
Revised 1-1-89

OIL CONSERVATION DIVISION

P.O. Box 2088
Santa Fe, New Mexico 87504-2088

DISTRICT I

P.O. Box 1980, Hobbs, NM 88240

DISTRICT II

P.O. Drawer DD, Artesia, NM 88210

DISTRICT III

1000 Rio Brazos Rd., Aztec, NM 87410

WELL LOCATION AND ACREAGE DEDICATION PLAT

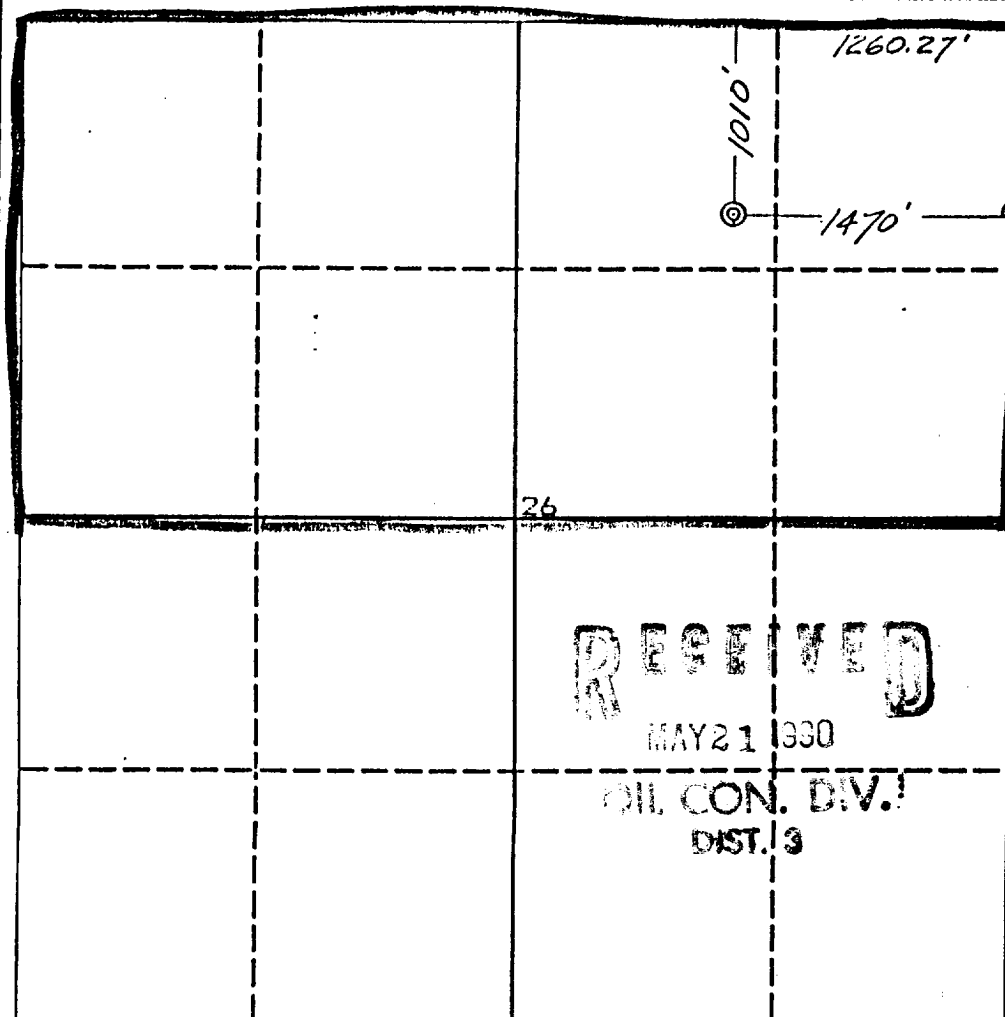
All Distances must be from the outer boundaries of the section

Operator AMOCO PRODUCTION COMPANY			Lease BARNES GAS COM /E/		Well No. # 1
Unit Letter B	Section 26	Township 32 NORTH	Range 11 WEST	County NMPM SAN JUAN	

Actual Footage Location of Well:

1010 feet from the		NORTH line and		1470 feet from the		EAST line	
Ground level Elev. 6361	Producing Formation Fruitland Coal		Pool Basin Fruitland Coal Gas		Dedicated Acreage: 320		N/A Acres

- Outline the acreage dedicated to the subject well by colored pencil or hatchure marks on the plat below.
- If more than one lease is dedicated to the well, outline each and identify the ownership thereof (both as to working interest and royalty).
- If more than one lease of different ownership is dedicated to the well, have the interest of all owners been consolidated by communitization, unitization, force-pooling, etc.?
☐ Yes ☐ No If answer is "yes" type of consolidation _____
If answer is "no" list the owners and tract descriptions which have actually been consolidated. (Use reverse side of this form if necessary).
No allowable will be assigned to the well until all interests have been consolidated (by communitization, unitization, forced-pooling, or otherwise) or until a non-standard unit, eliminating such interest, has been approved by the Division.



OPERATOR CERTIFICATION

I hereby certify that the information contained herein is true and complete to the best of my knowledge and belief.

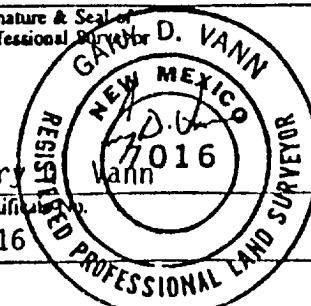
Signature **L. Hampton/CUB**
Printed Name **S.L. Hampton**
Position **Sr. Staff Admin. Supr.**
Company **Amoco Prod. Company**
Date **3/16/90**

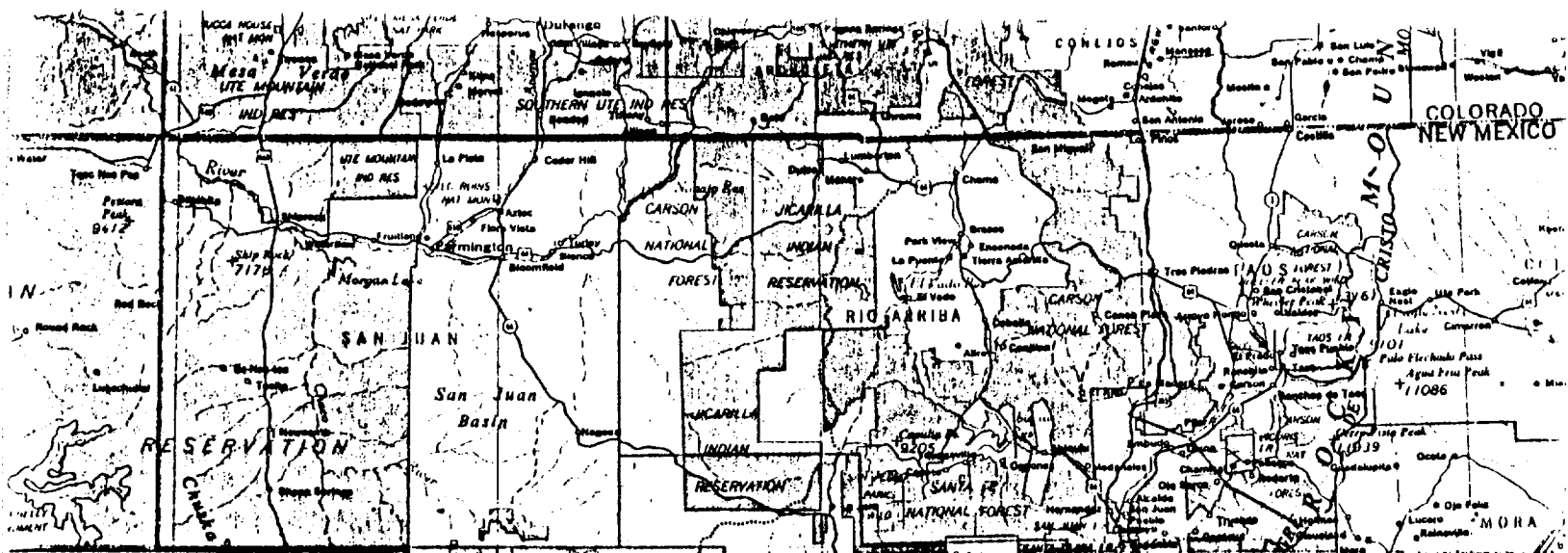
SURVEYOR CERTIFICATION

I hereby certify that the well location shown on this plat was plotted from field notes of actual surveys made by me or under my supervision, and that the same is true and correct to the best of my knowledge and belief.

Date Surveyed
March 13, 1990

Signature & Seal of Professional Surveyor
GARY D. VANN
016
Gary
Certification No.
7016





BARNES GAS COM /E/ # 1
 1010' F/NL 1470' F/EL
 SEC. 26, T32N, R11W, NMPM
 RAIL POINT: 155 miles to Montrose, Co.
 MUD POINT: 13 miles to Aztec, NM
 CEMENT POINT: 27 miles to Farmington, NM

