

UNITED STATES
DEPARTMENT OF THE INTERIOR
BUREAU OF LAND MANAGEMENT

(Other instructions on
reverse side)

Budget Bureau No. 1004-0136
Expires August 31, 1985
30-045-27872

APPLICATION FOR PERMIT TO DRILL, DEEPEN, OR PLUG BACK

1a. TYPE OF WORK
DRILL ☒ DEEPEN ☐ PLUG BACK ☐

b. TYPE OF WELL
OIL WELL ☐ GAS WELL ☒ OTHER ☐

2. NAME OF OPERATOR
NORTHWEST PIPELINE CORPORATION

3. ADDRESS OF OPERATOR
3539 EAST 30TH ST, FARMINGTON, NM 87401

4. LOCATION OF WELL (Report location clearly and in accordance with any State requirements.)
At surface 812' FNL
At proposed prod. zone 1079' FEL UNIT A

14. DISTANCE IN MILES AND DIRECTION FROM NEAREST TOWN OR POST OFFICE
SAME

15. DISTANCE FROM PROPOSED LOCATION TO NEAREST PROPERTY OR LEASE LINE, FT.
(Also to nearest drlg. unit line, if any) 812

16. NO. OF ACRES IN LEASE 480

17. NO. OF ACRES ASSIGNED TO THIS WELL E/2 320 ACRES

18. DISTANCE FROM PROPOSED LOCATION TO NEAREST WELL, DRILLING, COMPLETED, OR APPLIED FOR, ON THIS LEASE, FT. ± 295'

19. PROPOSED DEPTH 3365' KB

20. ROTARY OR CABLE TOOLS ROTARY

21. ELEVATIONS (Show whether DF, RT, GR, etc.) 6300' RB

22. APPROX. DATE WORK WILL START* JUNE 15, 1990

5. LEASE DESIGNATION AND SERIAL NO.
NM 03190

6. IF INDIAN, ALLOTTEE OR TRIBE NAME

7. UNIT AGREEMENT NAME
COX CANYON UNIT

8. FARM OR LEASE NAME
COX CANYON UNIT

9. WELL NO.
#203

10. FIELD AND POOL, OR WILDCAT
BASIN FRUITLAND COAL

11. SEC., T., R., M., OR BLK. AND SURVEY OR AREA
SECTION 17, T32N R11W

12. COUNTY OR PARISH 13. STATE
SAN JUAN NM

This action is subject to technical and procedural review pursuant to 43 CFR 3100.9 and 3100.10.

SIZE OF CASING	WEIGHT PER FOOT	SETTING DEPTH	QUANTITY OF CEMENT
12 1/4"	9 5/8"	36 # K-55	200'
8 3/4"	7"	23 # K-55	3075'
5 1/2"	6 1/4"	23 # P-110	2975 to 3365'
			NONE - OPEN HOLE

1) PLAN TO DRILL FRUITLAND FROM 3098' TO 3361' AND SET LINER IN OPEN HOLE. IF OPEN HOLE PROVES UNPRODUCTIVE, THE 5 1/2" LINER WILL BE CHANGED TO 15.5 # K-55, CEMENTED AND HYDRAULICALLY STIMULATED AS NECESSARY.

2) THE E/2 HALF OF SECTION 17 IS DEDICATED TO THIS WELL

RECEIVED
JUN 18 1990

IN ABOVE SPACE DESCRIBE PROPOSED PROGRAM: If proposal is to deepen or plug back, give data on present production in a productive zone. If proposal is to drill or deepen directionally, give pertinent data on subsurface locations and measured and true vertical depths. Give blowout preventer program, if any.

24. SIGNED Mark McCallister TITLE PRODUCTION & DRILLING ENGINEER DATE 4/20/90

(This space for Federal or State office use)

PERMIT NO. APPROVAL DATE

APPROVED BY TITLE DATE

CONDITIONS OF APPROVAL, IF ANY:

NMOCD

APPROVED

JUN 13 1990
John Stalla
AREA MANAGER

*See Instructions On Reverse Side

Title 18 U.S.C. Section 1001, makes it a crime for any person knowingly and willfully to make to any department or agency of the United States any false, fictitious or fraudulent statements or representations as to any matter within its jurisdiction.

Submit to Appropriate
District Office
State Lease - 4 copies
Fee Lease - 3 copies

State of New Mexico
Energy, Minerals and Natural Resources Department

Form C-102
Revised 1-1-89

OIL CONSERVATION DIVISION

P.O. Box 2088
Santa Fe, New Mexico 87504-2088

DISTRICT I
P.O. Box 1980, Hobbs, NM 88240

DISTRICT II
P.O. Drawer DD, Artesia, NM 88210

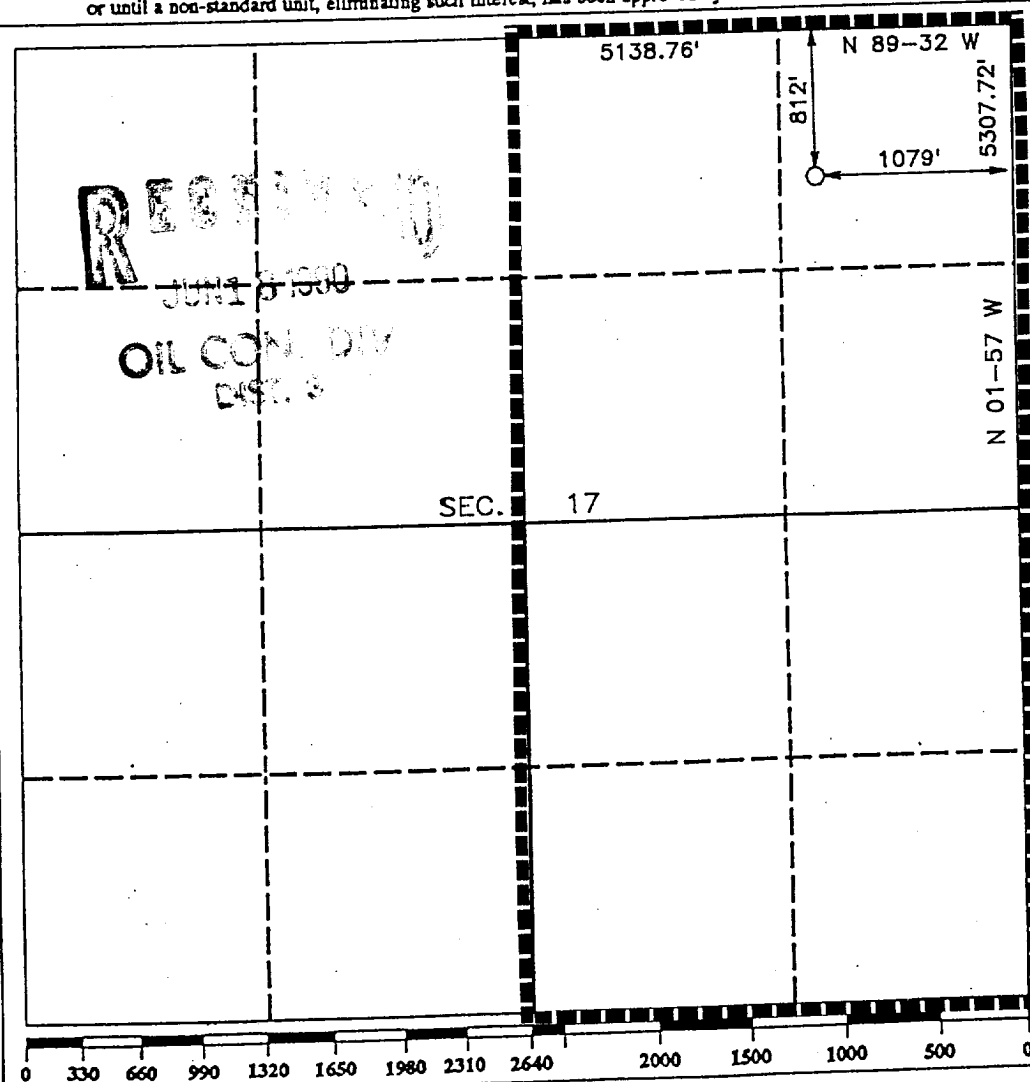
DISTRICT III
1000 Rio Brazos Rd., Aztec, NM 87410

WELL LOCATION AND ACREAGE DEDICATION PLAT

All Distances must be from the outer boundaries of the section

Operator NORTHWEST PIPELINE CORP.			Lease COX CANYON UNIT NO.		Well No. 203
Unit Letter A	Section 17	Township T.32 N.	Range R.11 W.	County SAN JUAN COUNTY	
Actual Footage Location of Well: 812 feet from the NORTH line and 1079 feet from the EAST line					
Ground level Elev. 6700	Producing Formation FRUITLAND		Pool BASIN FRUITLAND COAL		Dedicated Acreage: E/2 320 Acres

1. Outline the acreage dedicated to the subject well by colored pencil or hatchure marks on the plat below.
2. If more than one lease is dedicated to the well, outline each and identify the ownership thereof (both as to working interest and royalty).
3. If more than one lease of different ownership is dedicated to the well, have the interest of all owners been consolidated by communitization, unitization, force-pooling, etc.?
☒ Yes ☐ No If answer is "yes" type of consolidation UNITIZED
If answer is "no" list the owners and tract descriptions which have actually been consolidated. (Use reverse side of this form if necessary.)
No allowable will be assigned to the well until all interests have been consolidated (by communitization, unitization, forced-pooling, or otherwise) or until a non-standard unit, eliminating such interest, has been approved by the Division.



OPERATOR CERTIFICATION

I hereby certify that the information contained herein is true and complete to the best of my knowledge and belief.

Signature Mark McCallister
Printed Name **MARK MCCALLISTER**
Position **PROD. & DRILG ENGINEER**
Company **NORTHWEST PIPELINE CORP.**
Date **APRIL 17, 1990**

SURVEYOR CERTIFICATION

I hereby certify that the well location shown on this plat was plotted from field notes of actual surveys made by me or under my supervision, and that the same is true and correct to the best of my knowledge and belief.

Date Surveyed **APRIL 8, 1990**
Signature & Seal of Professional Surveyor R. Howard Daggett
Certificate No. **9678**
Registered Professional Land Surveyor

ROW APPLICATION
ROW NEEDED FOR 990' OF
EXISTING ROAD ON BLM LAND.
ROW EXISTS FOR FARMINGTON
GLADE ROAD