

UNITED STATES  
DEPARTMENT OF THE INTERIOR  
BUREAU OF LAND MANAGEMENT

APPLICATION FOR PERMIT TO DRILL, DEEPEN, OR PLUG BACK

1a. TYPE OF WORK

DRILL ☒

DEEPEN ☐

PLUG BACK ☐

b. TYPE OF WELL

OIL  
WELL ☐

GAS  
WELL ☒

OTHER

Coal Seam

SINGLE  
ZONE ☒

MULTIPLE  
ZONE ☐

2. NAME OF OPERATOR

Amoco Production Company

ATTN: J. L. Hampton

3. ADDRESS OF OPERATOR

P. O. Box 800 Denver, Colorado 80201

4. LOCATION OF WELL (Report location clearly and in accordance with any State requirements.)\*

At surface

930' FSL, 1260' FWL, SW/SW

At proposed prod. zone

same

14. DISTANCE IN MILES AND DIRECTION FROM NEAREST TOWN OR POST OFFICE\*

11 miles - Aztec, NM

10. DISTANCE FROM PROPOSED\*

LOCATION TO NEAREST

PROPERTY OR LEASE LINE, FT.

(Also to nearest drlg. unit line, if any)

930'

18. DISTANCE FROM PROPOSED LOCATION\*

TO NEAREST WELL, DRILLING, COMPLETED,  
OR APPLIED FOR, ON THIS LEASE, FT.

16. NO. OF ACRES IN LEASE

2,218.66

19. PROPOSED DEPTH

3104' TD

17. NO. OF ACRES ASSIGNED  
TO THIS WELL

320 acres W 1/2 309.35

20. ROTARY OR CABLE TOOLS

Rotary

21. ELEVATIONS (Show whether DF, RT, GR, etc.)

6233

GR

22. APPROX. DATE WORK WILL START\*

As soon as permitted

23.

PROPOSED CASING AND CEMENTING PROGRAM

DRILLING OPERATIONS AUTHORIZED ARE

SUBJECT TO COMPLIANCE WITH ATTACHED

QUANTITY OF CEMENT

GENERAL REQUIREMENTS

250 cf (cement to surface)

869 cf (cement to surface)

SIZE OF HOLE	SIZE OF CASING	WEIGHT PER FOOT	SETTING DEPTH
12 1/4"	8 5/8"	24#	250'
7 7/8"	5 1/2"	17#	3104' (TD)

Notice of Staking was submitted: 5/29/90

Lease Description:

T31N-R11W:

Sec. 4: Lots 5-12, S/2

Sec. 14: W/2 NE/4, NW/4 SE/4, N/2 SW/4, NW/4

Sec. 15: N/2, SE/4, W/2 SW/4

T32N-R11W:

Sec. 33: All

RECEIVED

JUL 23 1990

OIL CON. DIV.  
DIST. 3

IN ABOVE SPACE DESCRIBE PROPOSED PROGRAM: If proposal is to deepen or plug back, give data on present productive zone and proposed new productive zone. If proposal is to drill or deepen directionally, give pertinent data on subsurface locations and measured and true vertical depths. Give blowout preventer program, if any.

24.

J. L. Hampton

SIGNED

J. L. Hampton/cub

TITLE Sr. Staff Admin. Supv.

DATE 6/26/90

(This space for Federal or State office use)

PERMIT NO.

APPROVAL DATE

APPROVED BY

CONDITIONS OF APPROVAL, IF ANY:

TITLE

NMOOD

\*See Instructions On Reverse Side

Title 18 U.S.C. Section 1001, makes it a crime for any person knowingly and willfully to make to any department or agency of the United States any false, fictitious or fraudulent statements or representations as to any matter within its jurisdiction.

Submit to Appropriate  
District Office  
State Lease - 4 copies  
Fee Lease - 3 copies

State of New Mexico  
Energy, Minerals and Natural Resources Department

Form C-102  
Revised 1-1-89

OIL CONSERVATION DIVISION

P.O. Box 2088  
Santa Fe, New Mexico 87504-2088

DISTRICT I  
P.O. Box 1980, Hobbs, NM 88240

DISTRICT II  
P.O. Drawer DD, Artesia, NM 88210

DISTRICT III  
1000 Rio Brazos Rd., Aztec, NM 87410

WELL LOCATION AND ACREAGE DEDICATION PLAT  
All Distances must be from the outer boundaries of the section

Operator <b>AMOCO PRODUCTION COMPANY</b>			Lease <b>NEIL /A/</b>		Well No. <b># 23</b>
Unit Letter <b>M</b>	Section <b>4</b>	Township <b>31 NORTH</b>	Range <b>11 WEST</b>	County <b>SAN JUAN</b>	
Actual Footage Location of Well: <b>930</b> feet from the <b>SOUTH</b> line and <b>1260</b> feet from the <b>WEST</b> line					
Ground level Elev. <b>6233</b>	Producing Formation <b>Fruitland Coal</b>	Pool <b>Basin Fruitland Coal Gas</b>		Dedicated Acreage: <b>W/2 309.35</b> ACRES	

- Outline the acreage dedicated to the subject well by colored pencil or hatchure marks on the plat below.
- If more than one lease is dedicated to the well, outline each and identify the ownership thereof (both as to working interest and royalty).
- If more than one lease of different ownership is dedicated to the well, have the interest of all owners been consolidated by communization, unitization, force-pooling, etc.?  
☐ Yes ☐ No If answer is "yes" type of consolidation \_\_\_\_\_  
If answer is "no" list the owners and tract descriptions which have actually been consolidated. (Use reverse side of this form if necessary). \_\_\_\_\_  
No allowable will be assigned to the well until all interests have been consolidated (by communization, unitization, forced-pooling, or otherwise) or until a non-standard unit, eliminating such interest, has been approved by the Division.

OPERATOR CERTIFICATION

I hereby certify that the information contained herein is true and complete to the best of my knowledge and belief.

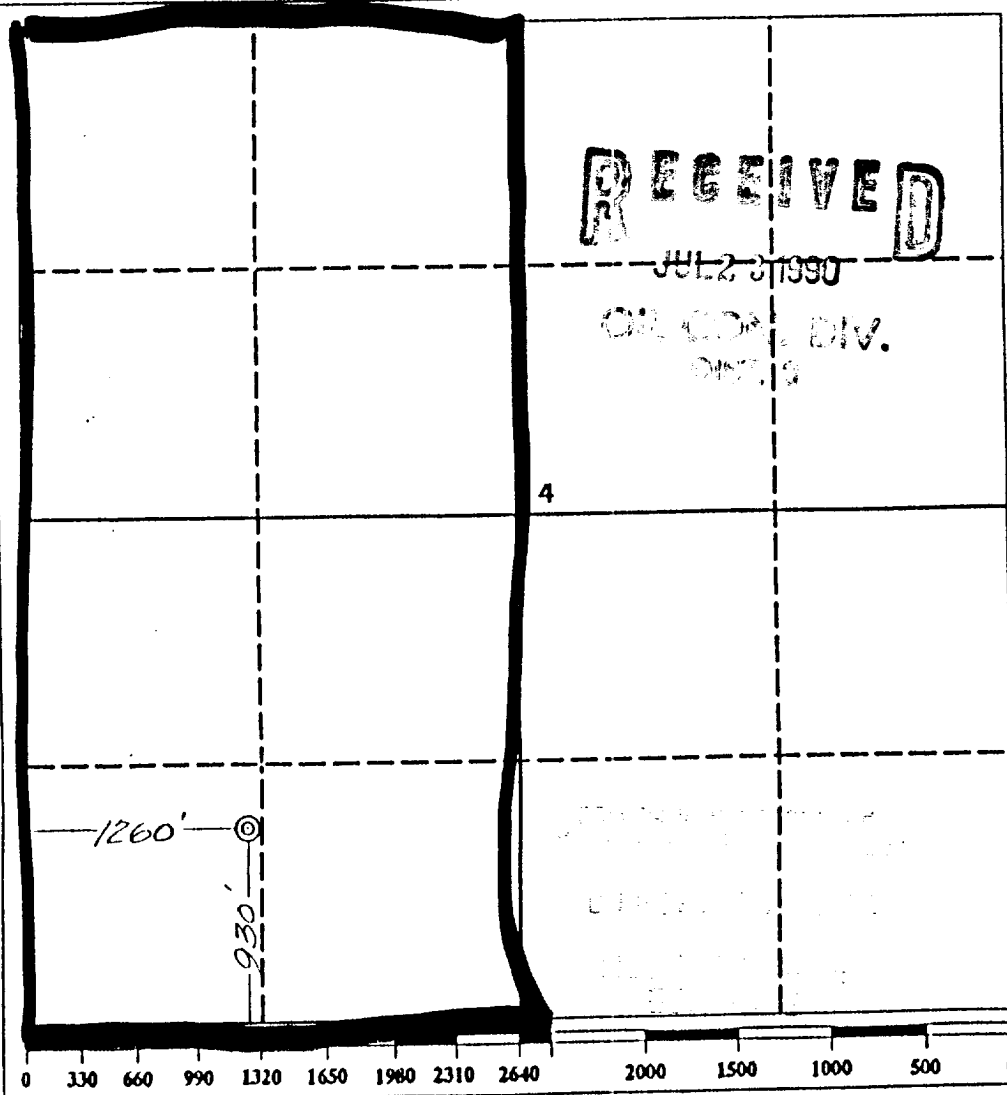
Signature *[Signature]*  
Printed Name **SL Hampton**  
Position **Sr Staff Admin Super**  
Company **Amoco Prod.**  
Date **5-29-90**

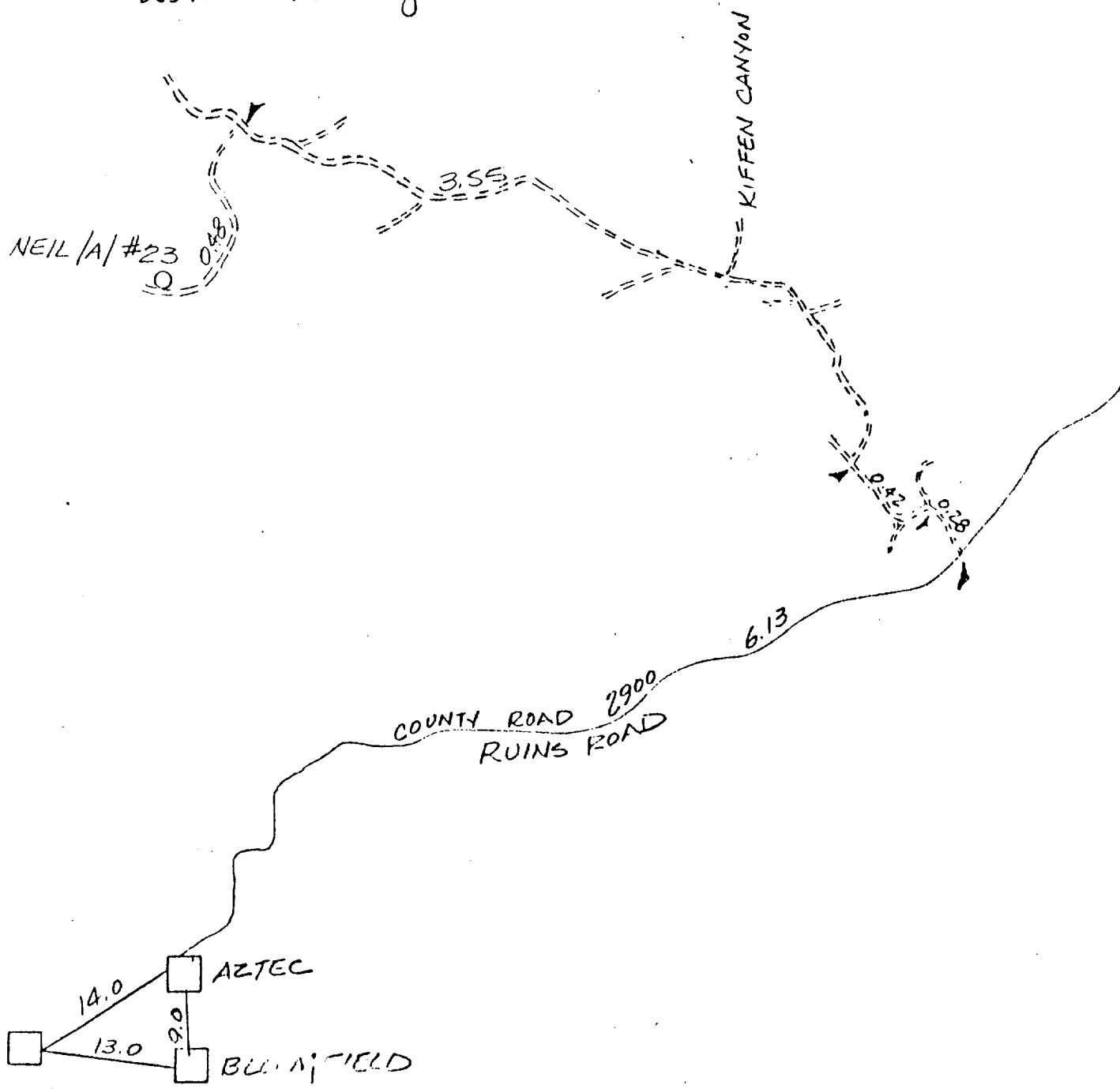
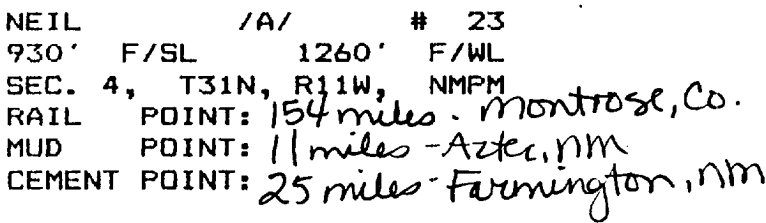
SURVEYOR CERTIFICATION

I hereby certify that the well location shown on this plat was plotted from field notes of actual surveys made by me or under my supervision, and that the same is true and correct to the best of my knowledge and belief.

Date Surveyed **May 23, 1990**

Signature & Seal of Professional Surveyor  
**GARY D. VANN**  
**7016**  
Gary  
Certification  
**7016**





37.47  
 37.47  
 20.98  
 37.18  
 1021  
 32.2  
 1,273  
 1,273  
 1,273  
 1,273

15475  
 15475  
 29955