

UNITED STATES  
DEPARTMENT OF THE INTERIOR  
BUREAU OF LAND MANAGEMENT

APPLICATION FOR PERMIT TO DRILL, DEEPEN, OR PLUG BACK

1a. TYPE OF WORK

DRILL ☒

DEEPEN ☐

PLUG BACK ☐

b. TYPE OF WELL

OIL  
WELL ☐

GAS  
WELL ☒

OTHER

SINGLE  
ZONE ☒

MULTIPLE  
ZONE ☐

2. NAME OF OPERATOR

MESA OPERATING LIMITED PARTNERSHIP

3. ADDRESS OF OPERATOR

P.O. BOX 2009, AMARILLO, TEXAS 79189

4. LOCATION OF WELL (Report location clearly and in accordance with any State requirements.)\*

At surface

2350 2005' FNL & 885' FEL  
1025'

At proposed prod. zone

14. DISTANCE IN MILES AND DIRECTION FROM NEAREST TOWN OR POST OFFICE\*

12 miles N/NW of Aztec, New Mexico

15. DISTANCE FROM PROPOSED\*  
LOCATION TO NEAREST  
PROPERTY OR LEASE LINE, FT.  
(Also to nearest drlg. unit line, if any)

885'

16. NO. OF ACRES IN LEASE

983.65'

17. NO. OF ACRES ASSIGNED  
TO THIS WELL

E/2 320 acres

18. DISTANCE FROM PROPOSED LOCATION\*  
TO NEAREST WELL, DRILLING, COMPLETED,  
OR APPLIED FOR, ON THIS LEASE, FT.

205'

19. PROPOSED DEPTH

3380'

20. ROTARY OR CABLE TOOLS

Rotary

21. ELEVATIONS (Show whether DF, RT, GR, etc.)

6630' GR 6616

DEVELOPMENT OF THIS ACTING ARE  
SUBJECT TO COMPLIANCE WITH ATTACHED  
"GENERAL REQUIREMENTS".

22. APPROX. DATE WORK WILL START\*

December 4, 1989

23. PROPOSED CASING AND CEMENTING PROGRAM procedural review pursuant to 43 CFR 3125.3  
and appeal pursuant to 43 CFR 3125.4.

SIZE OF HOLE	SIZE OF CASING	WEIGHT PER FOOT	SETTING DEPTH	QUANTITY OF CEMENT
12 1/4"	8 5/8"	24#	200'	150 sx 'B' + 2% CaCl (Surface)
7 7/8"	5 1/2"	17#	3380'	450 Poz/300 'B' (Surface)

Propose to spud well with 12 1/4" hole and drill to 200' and set 8 5/8" surface casing. Will cement with 150 sx of Class "B" and raise cement to surface. Will nipple up 2000 psi BOP assembly and drill 7 7/8" hole to TD of + 3380' with fresh water mud system. Will then log well and evaluate for possible commercial production. If successful, will then run 5 1/2" casing to 3380' and cement with 450 sx Pozmix followed by 300 sx Class "B" cement. Will move off drilling rig and move in completion unit.

xc: BLM-Farmington (0+5), NMOCD-Aztec (1), WF, Reg, Land, Expl., Drilling  
IN ABOVE SPACE DESCRIBE PROPOSED PROGRAM: If proposal is to deepen or plug back, give data on present productive zone and proposed new productive zone. If proposal is to drill or deepen directionally, give pertinent data on subsurface locations and measured and true vertical depths. Give blowout preventer program, if any.

24.

SIGNED

R. E. Martin

TITLE

Regulatory Agent

DATE

10/10/89

(This space for Federal or State office use)

PERMIT NO.

APPROVAL DATE

APPROVED BY

AUG 06 1990

TITLE

DATE

CONDITIONS OF APPROVAL, IF ANY:

OIL CON. DIV.  
DIST. 3

NMOCD

\*See Instructions On Reverse Side

[illegible]

# OIL CONSERVATION DIVISION

P.O. Box 2088

Santa Fe, New Mexico 87504-2088

## DISTRICT I

P.O. Box 1980, Hobbs, NM 88240

## DISTRICT II

P.O. Drawer DD, Artesia, NM 88210

## DISTRICT III

1000 Rio Brazos Rd., Aztec, NM 87410

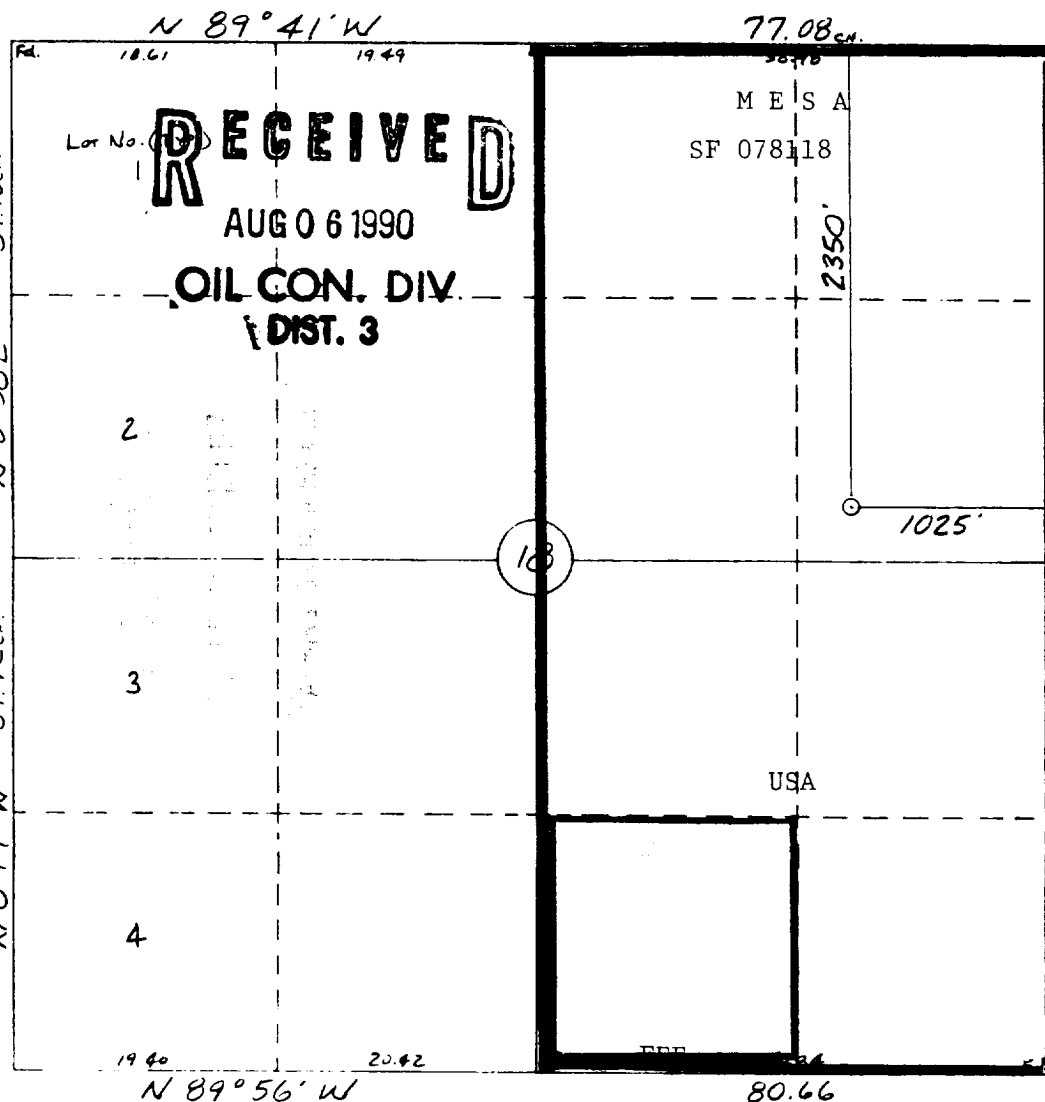
## WELL LOCATION AND ACREAGE DEDICATION PLAT

All Distances must be from the outer boundaries of the section

Operator <b>MESA OPERATING LIMITED PARTNERSHIP</b>			Lease <b>FC FEDERAL COM</b>		Well No. <b>7</b>
Unit Letter <b>H</b>	Section <b>18</b>	Township <b>32 N</b>	Range <b>11 W</b>	County <b>San Juan</b>	
Actual Footage Location of Well: <b>2350</b> feet from the <b>North</b> line and <b>1025</b> feet from the <b>East</b> line					
Ground level Elev. <b>6616</b>	Producing Formation <b>Fruitland Coal</b>		Pool <b>Basin Fruitland Coal</b>		Dedicated Acreage: <b>E/2 320 Acres</b>

1. Outline the acreage dedicated to the subject well by colored pencil or hatchure marks on the plat below.
2. If more than one lease is dedicated to the well, outline each and identify the ownership thereof (both as to working interest and royalty).
3. If more than one lease of different ownership is dedicated to the well, have the interest of all owners been consolidated by communitization, unitization, force-pooling, etc.?  
☒ Yes ☐ No If answer is "yes" type of consolidation Communitization  
If answer is "no" list the owners and tract descriptions which have actually been consolidated. (Use reverse side of this form if necessary.)  
No allowable will be assigned to the well until all interests have been consolidated (by communitization, unitization, forced-pooling, or otherwise) or until a non-standard unit, eliminating such interest, has been approved by the Division.

0 330 660 990 1320 1650 1980 2310 2640 2000 1500 1000 500 0



## OPERATOR CERTIFICATION

I hereby certify that the information contained herein is true and complete to the best of my knowledge and belief.

Signature  
*Carolyn L. McKee*  
Printed Name  
**Carolyn L. McKee**  
Position  
**Regulatory Analyst**  
Company  
**Mesa Ltd Partnership**  
Date  
**6/12/90**

## SURVEYOR CERTIFICATION

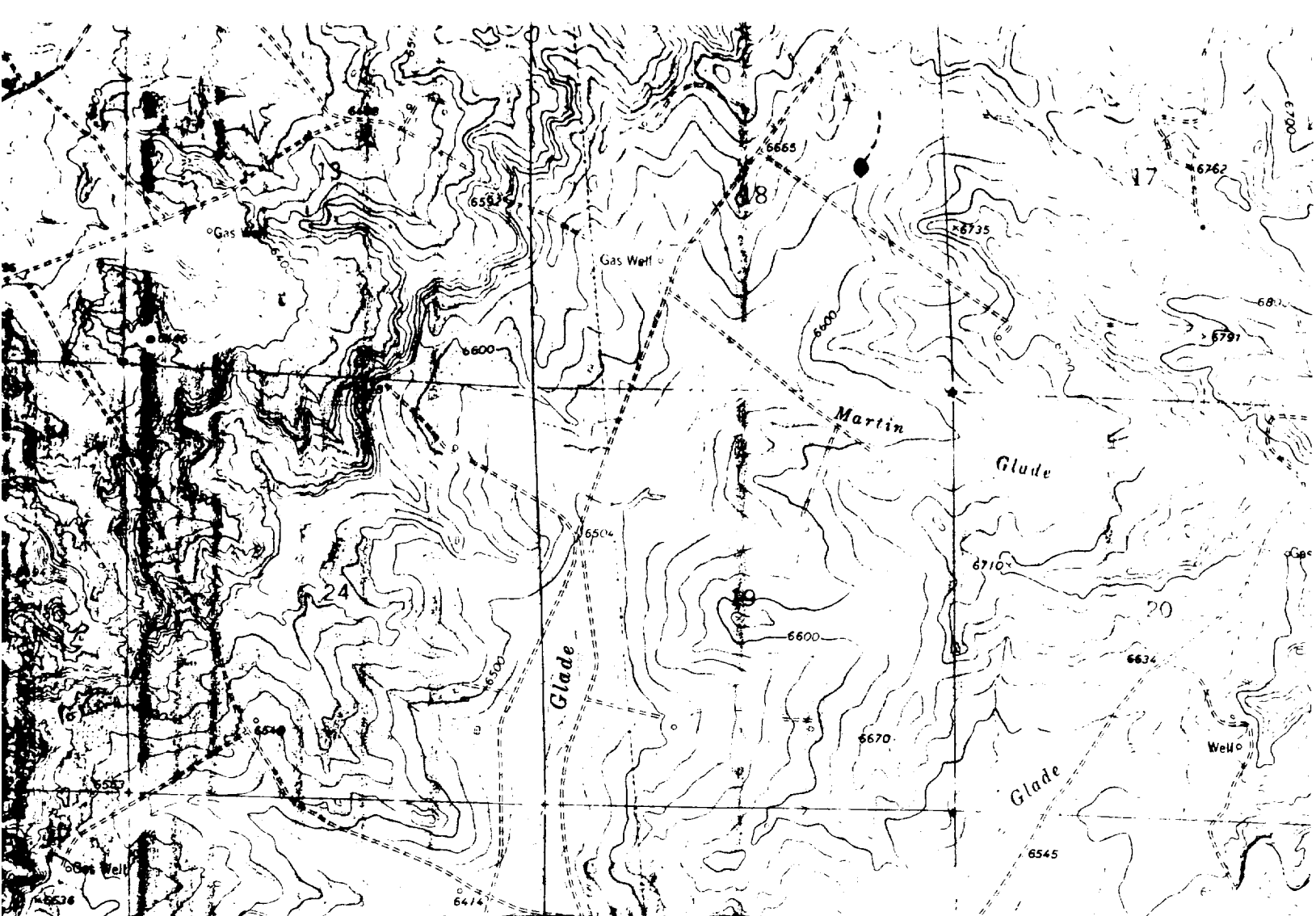
I hereby certify that the well location shown on this plat was plotted from field notes of actual surveys made by me or under my supervision, and that the same is true and correct to the best of my knowledge and belief.

6-4-90

Date Surveyed  
**William B. Mahnke II**

Signature & Seal of  
Professional Surveyor

**WILLIAM B. MAHNKE II**  
**NEW MEXICO**  
**#8466**  
**PROFESSIONAL LAND SURVEYOR**



MESA OPERATING LTD. PARTNERSHIP  
FC FEDERAL #7  
2350'FNL & 1025'FEL  
Sec.18, T32N, R11W  
San Juan Co., N.M.

