

30-045-28675

UNITED STATES
DEPARTMENT OF THE INTERIOR
BUREAU OF LAND MANAGEMENT

APPLICATION FOR PERMIT TO DRILL, DEEPEN, OR PLUG BACK

<p>1a. TYPE OF WORK DRILL</p> <p>1b. TYPE OF WELL GAS</p>	<p>5. LEASE NUMBER SF-078509</p> <p>6. IF INDIAN, ALL. OR TRIBE NAME</p>
<p>2. OPERATOR MERIDIAN OIL INC.</p>	<p>7. UNIT AGREEMENT NAME SAN JUAN 32-9 UNIT</p>
<p>3. ADDRESS & PHONE NO. OF OPERATOR P O BOX 4289 FARMINGTON, NM 87499</p>	<p>8. FARM OR LEASE NAME SAN JUAN 32-9 UNIT</p> <p>9. WELL NO. 279</p>
<p>4. LOCATION OF WELL 840' FSL 990' FWL</p>	<p>10. FIELD, POOL, OR WILDCAT BASIN FRUITLAND COAL</p> <p>11. SEC. T. R. M OR BLK. SEC. 31 T32N R09W NMPM</p>
<p>14. DISTANCE IN MILES FROM NEAREST TOWN 4 miles east cedar hill</p>	<p>12. COUNTY SAN JUAN</p> <p>13. STATE NM</p>
<p>15. DISTANCE FROM PROPOSED LOCATION TO NEAREST PROPERTY OR LEASE LINE. 840'</p>	<p>16. ACRES IN LEASE 2136.90</p> <p>17. ACRES ASSIGNED TO WELL 205.66</p> <p style="font-size: small;">This action is subject to technical and procedural review pursuant to 43 CFR 3165.3 and appeal pursuant to 43 CFR 3165.4.</p>
<p>18. DISTANCE FROM PROPOSED LOCATION TO NEAREST WELL DR. COMPL., OR APPLIED FOR ON THIS LEASE. 250'</p>	<p>19. PROPOSED DEPTH 3602'</p> <p>20. ROTARY OR CABLE TOOLS ROTARY</p> <p style="font-size: small;">DRILLING OPERATIONS AT THIS WELL ARE SUBJECT TO COMPLIANCE WITH ATTACHED "GENERAL REQUIREMENTS".</p>
<p>21. ELEVATIONS (DF, FT, GR, ETC.) 6775' GL</p>	<p>22. APPROX. DATE WORK WILL START</p>

23. PROPOSED CASING AND CEMENTING PROGRAM

*SEE OPERATIONS

24. AUTHORIZED BY: 

REG. DRILLING ENGR.

RECEIVED

AUG 08 1990

OIL CON. DIV

DIST. 3

7/18/90
DATE

PERMIT NO. _____ APPROVAL DATE _____

APPROVED BY _____ TITLE _____ DATE _____

NOTE: THIS FORMAT IS ISSUED IN LIEU OF US BLM FORM 3160

R-92220

NMOCD

Submit to Appropriate
District Office
State Leases - 4 copies
Fee Leases - 3 copies

State of New Mexico
Energy, Minerals and Natural Resources Department

Form C-102
Revised 1-1-89

OIL CONSERVATION DIVISION

P.O. Box 2088

Santa Fe, New Mexico 87504-2088

DISTRICT I

P.O. Box 1980, Hobbs, NM 88240

DISTRICT II

P.O. Drawer DD, Artesia, NM 88210

DISTRICT III

1000 Rio Brazos Rd., Aztec, NM 87410

WELL LOCATION AND ACREAGE DEDICATION PLAT

All Distances must be from the outer boundaries of the section

Operator Meridian Oil Inc.			Lease (SF-078509) San Juan 32-9 Unit		Well No. 279
Unit Letter N	Section 31	Township 32 North	Range 9 West	County San Juan	
Actual Footage Location of Well: 840 feet from the South line and 990 feet from the West line					
Ground level Elev. 6775'	Producing Formation Fruitland Coal	Pool Basin	Dedicated Acreage: 205.66 Acres		

1. Outline the acreage dedicated to the subject well by colored pencil or hectare marks on the plat below.

2. If more than one lease is dedicated to the well, outline each and identify the ownership thereof (both as to working interest and royalty).

3. If more than one lease of different ownership is dedicated to the well, have the interest of all owners been consolidated by communitization, unitization, force-pooling, etc.?

☒ Yes

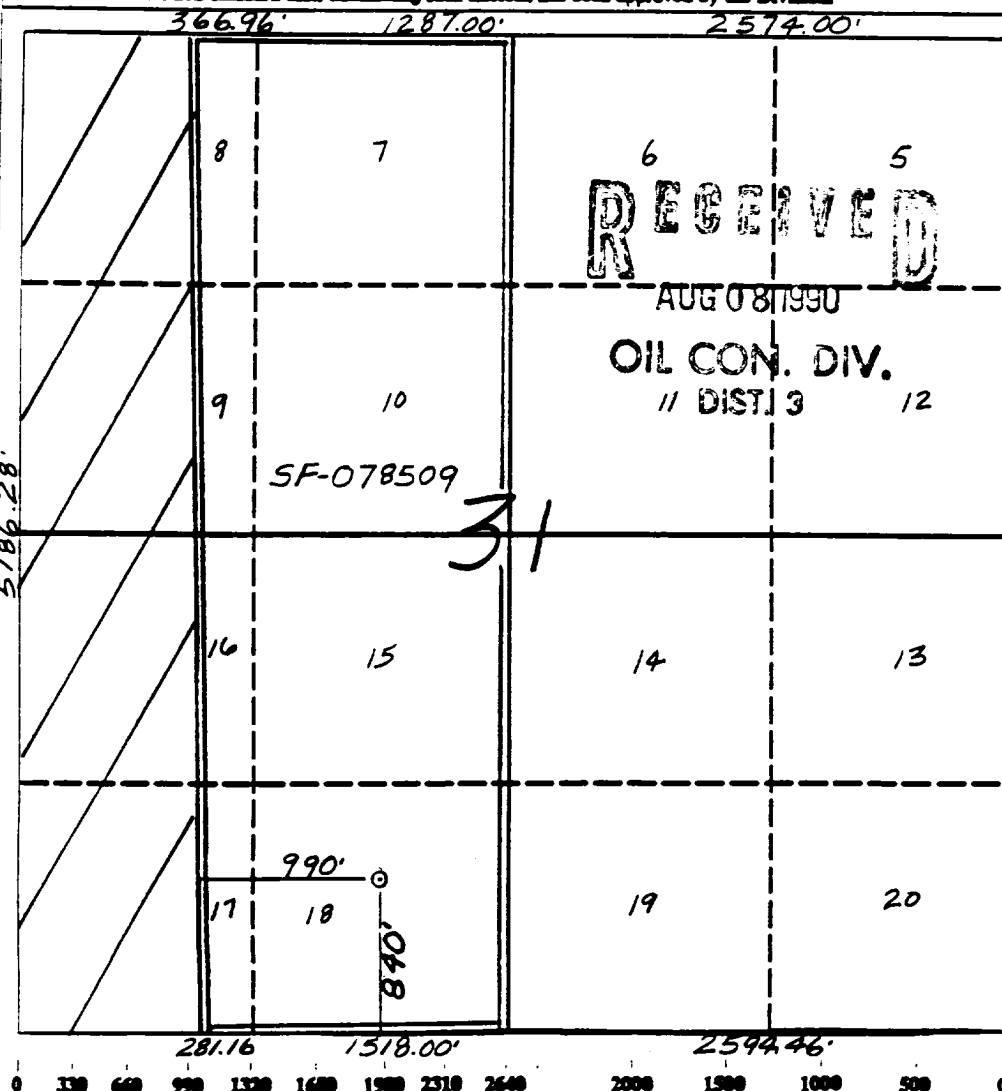
☐ No

If answer is "yes" type of consolidation

unitization

If answer is "no" list the owners and tract descriptions which have actually been consolidated. (Use reverse side of this form if necessary.)

No allowable will be assigned to the well until all interests have been consolidated (by communitization, unitization, forced-pooling, or otherwise) or until a non-standard unit, eliminating such interest, has been approved by the Division.



OPERATOR CERTIFICATION

I hereby certify that the information contained herein is true and complete to best of my knowledge and belief.

Signature
Peggy Bradfield

Printed Name
Regulatory Affairs

Position
Meridian Oil Inc.

Company
7-18-90

Date

SURVEYOR CERTIFICATION

I hereby certify that the well location shown on this plat was plotted from field notes actual surveys made by me or under my supervision, and that the same is true to correct to the best of my knowledge and belief.

5-23-90

Date Surveyed

Signature

Professional

Neale Edwards

Well Name: 279 SAN JUAN 32-9 UNIT 840' FSL 990' FWL
 Sec. 31 T32N R09W SAN JUAN NEW MEXICO
 BASIN FRUITLAND COAL Elevation 6775' GL

Formation tops: Surface- SAN JOSE
 Ojo Alamo- 2000
 Kirtland- 2093
 Fruitland- 3292
 Fruitland Coal Top- 3358 Intermediate TD- 3338
 Fruitland Coal Base- 3600 Total Depth- 3602
 Pictured Cliffs- 3604

Logging Program: Mud logs from intermediate to total depth.

Mud Program:	Interval	Type	Weight	Visc.	Fl. Loss
	0 - 200	Spud	8.4 - 8.9	40-50	no contro
	200 - 3338	Non-dispersed	8.4 - 9.1	30-60	no contro
	3338 - 3602	Formation Water	8.4		no contro

Casing Program:	Hole Size	Depth Interval	Csg. Size	Weight	Grade
	12 1/4"	0 - 200	9 5/8"	32.3#	H-40
	8 3/4"	0 - 3338	7"	20.0#	K-55
	6 1/4"	3288 - 3602	5 1/2"	15.5#	K-55
Tubing Program:		0 - 3602	2 7/8"	6.5#	J-55

Float Equipment: 9 5/8" surface casing - saw tooth guide shoe. Centralizers will be run in accordance with Onshore Order #2.

7" intermediate casing - guide shoe and self-fill insert float valve. Three centralizers run every other joint above shoe. Run insert float one joint above the guide shoe. Two turbolizing type centralizers - one below and one into the base of the Ojo Alamo @ 2093'. Standard centralizers thereafter every fourth joint up to the base of the surface pipe.

5 1/2" production casing - float shoe on bottom and a pre-drilled liner run to the 7" casing with a minimum 50' overlap. Liner hanger is a double slip grip type.

Wellhead Equipment: 9 5/8" x 7" x 2 7/8" x 11" 3000 psi xmas tree assembly.

Cementing:

9 5/8" surface casing - cement with 160 sacks of class "B" cement with 1/4# flocele/sack and 3% calcium chloride (189 cu ft. of slurry, 200% excess to circulate to surface). WOC 12 hours. Test casing to 600 psi for 30 minutes.

7" intermediate casing - lead with 490 sacks of 65/35 class "B" poz with 6% gel, 2% calcium chloride and 1/2 cu ft. Perlite/sack (10.3 gallons of water/sack) tail with 100 sacks of class "B" with 2% calcium chloride. 1064 cu ft. of slurry, 110% excess to circulate to surface. If hole conditions permit, a 600 ft spacer will be run ahead of the cement slurry to avoid mud contamination of the cement. WOC 12 hours. If cement does not circulate to surface, a temperature log will be run after 8 hours to determine TOC.

5 1/2" liner - do not cement.

San Juan 32-9 Unit #279
T32N, R9W

70' New Construction

9100' existing BLM roads
located within
Unit boundaries

MAP 1

