

UNITED STATES
DEPARTMENT OF THE INTERIOR
BUREAU OF LAND MANAGEMENT

30-045-28238

APPLICATION FOR PERMIT TO DRILL, DEEPEN, OR PLUG BACK

1a. TYPE OF WORK
DRILL ☒ DEEPEN ☐ PLUG BACK ☐
b. TYPE OF WELL
OIL WELL ☐ GAS WELL ☒ OTHER ☐
SINGLE ZONE ☒ MULTIPLE ZONE ☐
2. NAME OF OPERATOR
Phillips Petroleum Company
3. ADDRESS OF OPERATOR
300 W. Arrington, Suite 200, Farmington, N.M. 87401
4. LOCATION OF WELL (Report location clearly and in accordance with any State requirements.)
At surface Unit K, 1334' FSL & 1679' FWL
At proposed prod. zone Unit K, 1334' FSL & 1679' FWL
14. DISTANCE IN MILES AND DIRECTION FROM NEAREST TOWN OR POST OFFICE*

5. LEASE DESIGNATION AND SERIAL NO.
SF-078542
6. IF INDIAN, ALLOTTEE OR TRIBE NAME
7. UNIT AGREEMENT NAME
San Juan 32-7 Unit
8. FARM OR LEASE NAME
9. WELL NO.
211
10. FIELD AND POOL, OR WILDCAT
Basin Fruitland Coal Gas
11. SEC., T., R., M., OR BLK.
AND SURVEY OR AREA
K
Sec.35, T-32-N, R- 7-W
12. COUNTY OR PARISH
San Juan
13. STATE
N.M.

15. DISTANCE FROM PROPOSED* LOCATION TO NEAREST PROPERTY OR LEASE LINE, FT.
(Also to nearest drig. unit line, if any) 1334' FSL
16. NO. OF ACRES IN LEASE
960
17. NO. OF ACRES ASSIGNED TO THIS WELL
320 AC W/2 of Section
18. DISTANCE FROM PROPOSED LOCATION* TO NEAREST WELL, DRILLING, COMPLETED, OR APPLIED FOR, ON THIS LEASE, FT.
226' from #28
19. PROPOSED DEPTH
3381'
20. ROTARY OR CABLE TOOLS
Rotary
21. ELEVATIONS (Show whether DF, RT, GR, etc.)
6537' (GL Unprepared)
This action is subject to technical and procedural review pursuant to 43 CFR 3165.3 and appeal pursuant to 43 CFR 3165.4.
22. APPROX. DATE WORK WILL START*
Upon Approval
23. PROPOSED CASING AND CEMENTING PROGRAM

SIZE OF HOLE	SIZE OF CASING	WEIGHT PER FOOT	SETTING DEPTH	QUANTITIES OF CEMENT
12-1/4"	9-5/8"	36#, K-55	250'	250' sxs, Circ to Surface
8-3/4"	7"	23#, K-55	3178'	650 sxs, Circ to Surface
6-1/8"	5-1/2"	15.5# or 23#	3078' - 3381'	*

*If the coal is cleated a 5-1/2", 23#, P-110 liner will be run in the open hole without being cemented.
*If the coal is not cleated the well will be stimulated and a 5-1/2", 15.5#, J-55 liner will be run without being cemented.

RECEIVED
SEP 13 1990
OIL CON. DIV.
DIST. 3

Mud Program and BOP Equipment: See Attached

IN ABOVE SPACE DESCRIBE PROPOSED PROGRAM: If proposal is to deepen or plug back, give data on present productive zone and proposed new productive zone. If proposal is to drill or deepen directionally, give pertinent data on subsurface locations and measured and true vertical depths. Give blowout preventer program, if any.

24. SIGNED Jim Sanders TITLE Supv. Regulatory Affairs DATE 6/16/90
(This space for Federal or State office use)
PERMIT NO. _____ APPROVAL DATE _____
APPROVED BY _____ TITLE _____ DATE SEP 07 1990
CONDITIONS OF APPROVAL, IF ANY:
Hold c-104 For pool change on SJ 32-7
Unit # 45 & 48 wells
NMOCD
See Instructions On Reverse Side
AREA MANAGER

Submit to Appropriate
District Office
State Lease - 4 copies
Fee Lease - 3 copies

State of New Mexico
Energy, Minerals and Natural Resources Department

Form C-102
Revised 1-1-89

OIL CONSERVATION DIVISION

P.O. Box 2088
Santa Fe, New Mexico 87504-2088

DISTRICT I
P.O. Box 1980, Hobbs, NM 88240

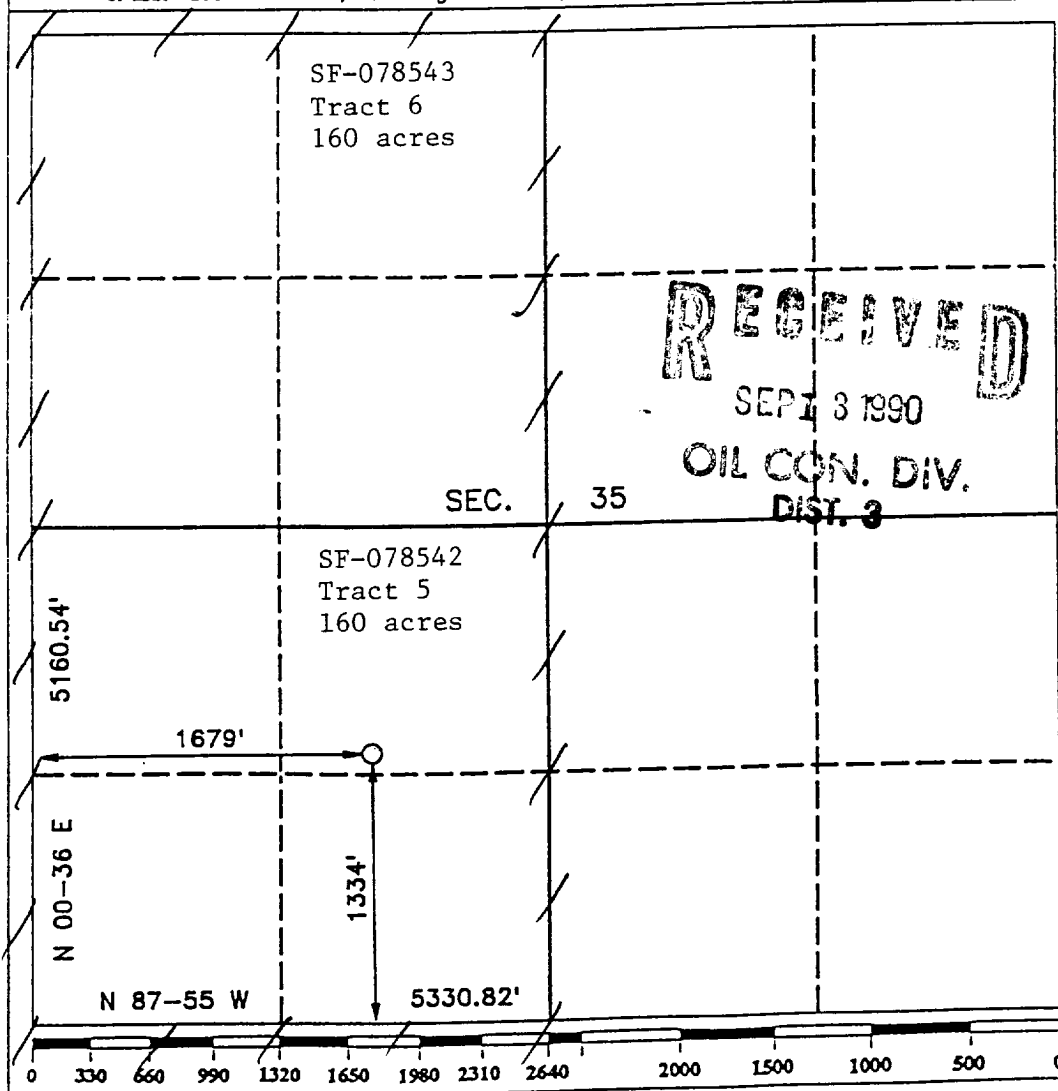
DISTRICT II
P.O. Drawer DD, Artesia, NM 88210

DISTRICT III
1000 Rio Brazos Rd., Aztec, NM 87410

WELL LOCATION AND ACREAGE DEDICATION PLAT
All Distances must be from the outer boundaries of the section

Operator PHILLIPS PETROLEUM		Lease SAN JUAN 32-7 UNIT		Well No. 211
Unit Letter K	Section 35	Township T.32 N.	Range R.7 W.	County SAN JUAN COUNTY
Actual Footage Location of Well: 1334 feet from the SOUTH line and 1679 feet from the WEST line				
Ground level Elev. 6537	Producing Formation Fruitland	Pool Basin Fruitland Coal	Dedicated Acreage: 320 Acres	

1. Outline the acreage dedicated to the subject well by colored pencil or hatchure marks on the plat below.
2. If more than one lease is dedicated to the well, outline each and identify the ownership thereof (both as to working interest and royalty).
3. If more than one lease of different ownership is dedicated to the well, have the interest of all owners been consolidated by communitization, unitization, force-pooling, etc.? ☒ Yes ☐ No If answer is "yes" type of consolidation unitization
If answer is "no" list the owners and tract descriptions which have actually been consolidated. (Use reverse side of this form if necessary.)
No allowable will be assigned to the well until all interests have been consolidated (by communitization, unitization, forced-pooling, or otherwise) or until a non-standard unit, eliminating such interest, has been approved by the Division.



OPERATOR CERTIFICATION

I hereby certify that the information contained herein is true and complete to the best of my knowledge and belief.

Signature
L. M. Sanders
Printed Name
L. M. Sanders
Position
Supv. Regulatory Affairs
Company
Phillips Petroleum Co.
Date
6/16/90

SURVEYOR CERTIFICATION

I hereby certify that the well location shown on this plat was plotted from field notes of actual surveys made by me or under my supervision, and that the same is true and correct to the best of my knowledge and belief.

Date Surveyed
MAY 10 1990
Signature & Seal of Professional Surveyor
R. HOWARD DAGGETT
Certificate No. **10679**
Registered Professional Land Surveyor