

Submit to Appropriate
District Office
State Lease - 6 copies
Fee Lease - 5 copies

State of New Mexico
Energy, Minerals and Natural Resources Department

Form C-101
Revised 1-1-89

OIL CONSERVATION DIVISION

DISTRICT I
P.O. Box 1980, Hobbs, NM 88240

P.O. Box 2088

Santa Fe, New Mexico 87504-2088

DISTRICT II
P.O. Drawer DD, Artesia, NM 88210

DISTRICT III
1000 Rio Brazos Rd., Aztec, NM 87410

API NO. (assigned by OCD on New Wells)

30-045-28354 ✓

5. Indicate Type of Lease

STATE ☐

FEE ☒

6. State Oil & Gas Lease No.

Fee

APPLICATION FOR PERMIT TO DRILL, DEEPEN, OR PLUG BACK

1a. Type of Work:

DRILL ☒

RE-ENTER ☐

DEEPEN ☐

PLUG BACK ☐

b. Type of Well:

OIL
WELL ☐

GAS
WELL ☒

OTHER

SINGLE
ZONE ☐

MULTIPLE
ZONE ☐

7. Lease Name or Unit Agreement Name

Aztec ✓

2. Name of Operator

Northwest Pipeline Corporation ✓

8. Well No.

#202

(W/318.85)

3. Address of Operator

3539 East 30th Street - Farmington, NM 87402

9. Pool name or Wildcat

Basin Fruitland Coal

4. Well Location

Unit Letter M : 1131 Feet From The South Line and 1027 Feet From The West Line

Section 22

Township 32N

Range 10W

NMPM San Juan ✓

County

10. Proposed Depth

2710"

11. Formation

Fruitland

12. Rotary or C.T.

Rotary

13. Elevations (Show whether DF, RT, GR, etc.)

5889' GR

14. Kind & Status Plug. Bond

Surety, Current

15. Drilling Contractor

16. Approx. Date Work will start

11/1/90

17.

PROPOSED CASING AND CEMENT PROGRAM

SIZE OF HOLE	SIZE OF CASING	WEIGHT PER FOOT	SETTING DEPTH	SACKS OF CEMENT	EST. TOP
12-1/4"	9-5/8"	30# K-55	200'	120	Surface
8-3/4"	7"	23# K-55	2420'	345	Surface
6-1/4"	5-1/2"	23# P-110	2710'	Open hole	N/A

- 1) Plan to drill Fruitland Coal from 2440' to 2707' and set liner in open hole.
If open hole proves unproductive, the liner will be changed to 5-1/2", 15.5#, K-55, cemented and the formation will be hydraulically stimulated as necessary.

- 2) BOPs: Drilling - 10" 3000#
Completion - 2-6" 5000#

APPROVAL EXPIRES 7-26-90
UNLESS DRILLING IS COMMENCED.
SPUD NOTICE MUST BE SUBMITTED
WITHIN 10 DAYS

RECEIVED
OCT 26 1990
OIL CON. DIV.
DIST. 3

IN ABOVE SPACE DESCRIBE PROPOSED PROGRAM: IF PROPOSAL IS TO DEEPEN OR PLUG BACK, GIVE DATA ON PRESENT PRODUCTIVE ZONE AND PROPOSED NEW PRODUCTIVE ZONE. GIVE BLOWOUT PREVENTER PROGRAM, IF ANY.

I hereby certify that the information above is true and complete to the best of my knowledge and belief.

SIGNATURE

Mark McCallister

TITLE Sr. Prod. & Drlg. Engineer DATE 10-25-90

TYPE OR PRINT NAME Mark McCallister

TELEPHONE NO. 327-5351

(This space for State Use)

APPROVED BY

Emmett Burch

DEPUTY OIL & GAS INSPECTOR, DIST. #3

DATE

CONDITIONS OF APPROVAL, IF ANY:

10-25-90
OCT 29 1990

Submit to Appropriate
District Office
State Lease - 4 copies
Fee Lease - 3 copies

State of New Mexico
Energy, Minerals and Natural Resources Department

Form C-102
Revised 1-1-89

OIL CONSERVATION DIVISION

P.O. Box 2088
Santa Fe, New Mexico 87504-2088

DISTRICT I
P.O. Box 1980, Hobbs, NM 88240

DISTRICT II
P.O. Drawer DD, Artesia, NM 88210

DISTRICT III
1000 Rio Brazos Rd., Aztec, NM 87410

WELL LOCATION AND ACREAGE DEDICATION PLAT

All Distances must be from the outer boundaries of the section

Operator NORTHWEST PIPELINE CORP.		Lease AZTEC		Well No. 202
Unit Letter M	Section 22	Township T.32 N.	Range R.10 W.	County SAN JUAN COUNTY
Actual Footage Location of Well: 1131 feet from the SOUTH line and 1027 feet from the WEST line				
Ground level Elev. 5889	Producing Formation Fruitland	Pool Basin Fruitland Coal		Dedicated Acreage: W/320 3/8 85 Acres

1. Outline the acreage dedicated to the subject well by colored pencil or hatchure marks on the plat below.

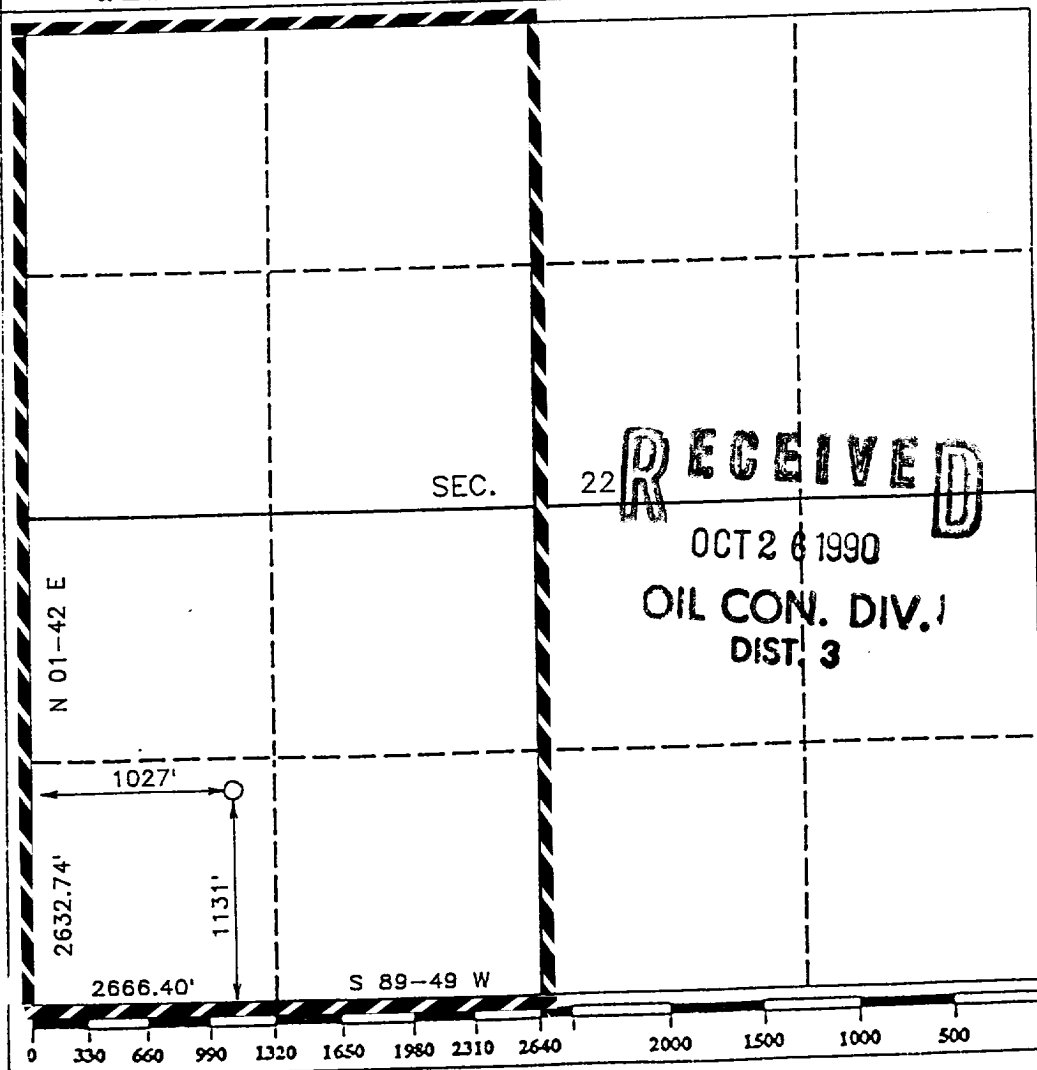
2. If more than one lease is dedicated to the well, outline each and identify the ownership thereof (both as to working interest and royalty).

3. If more than one lease of different ownership is dedicated to the well, have the interest of all owners been consolidated by communitization, unitization, force-pooling, etc.?

☒ Yes ☐ No If answer is "yes" type of consolidation **Communitized**

If answer is "no" list the owners and tract descriptions which have actually been consolidated. (Use reverse side of this form if necessary.)

No allowable will be assigned to the well until all interests have been consolidated (by communitization, unitization, forced-pooling, or otherwise) or until a non-standard unit, eliminating such interest, has been approved by the Division.



OPERATOR CERTIFICATION

I hereby certify that the information contained herein is true and complete to the best of my knowledge and belief.

Signature
Mark McCallister

Printed Name
Mark McCallister

Position
Sr. Engineer

Company
Northwest Pipeline Corp.

Date
10-25-90

SURVEYOR CERTIFICATION

I hereby certify that the well location shown on this plat was plotted from field notes of actual surveys made by me or under my supervision, and that the same is true and correct to the best of my knowledge and belief.

Date Surveyed
OCTOBER 22, 1990

Signature & Seal of Professional Surveyor
R. Howard Daggett

Certificate No. **9879**
Registered Professional
Land Surveyor

11 W 24 00000 E R 10 W 25 500 000 FEET (WEST) 25 50 R 9 W 45

LA PLATA CO
SAN JUAN CO

Topographic map showing the Animas River and surrounding area. Key features include:

- Animas River**: Flows from the northwest towards the southeast.
- Canyons**: Numerous canyons are labeled, including Kinfen Canyon, Tucker Canyon, Animos Canyon, Hart Canyon, Miller Canyon, Rock Canyon, Ditch Canyon, and Long Canyon.
- Towns and Settlements**: Aztec, Cedar Hill, and Riverside are marked.
- Mountains**: Mt. Nebo, Tank Mountain, and Hart Mountain are shown.
- Infrastructure**: Pipelines, ditches, and roads are indicated.
- Grid**: A coordinate grid is overlaid on the map, with labels 11 W, 24 00000 E, R 10 W, 25, 500 000 FEET (WEST), 25, 50, R 9 W, 45.