

UNITED STATES  
DEPARTMENT OF THE INTERIOR  
BUREAU OF LAND MANAGEMENT

30-045-28418

APPLICATION FOR PERMIT TO DRILL, DEEPEN, OR PLUG BACK

1a. TYPE OF WORK

DRILL ☒

DEEPEN ☐

PLUG BACK ☐

b. TYPE OF WELL

OIL  
WELL ☐

GAS  
WELL ☒

OTHER

SINGLE  
ZONE ☒

MULTIPLE  
ZONE ☐

2. NAME OF OPERATOR

CNG Development Company

3. ADDRESS OF OPERATOR

One Park Ridge Center, P.O. Box 15746, Pittsburgh, PA 15244

4. LOCATION OF WELL (Report location clearly and in accordance with any State requirements.)  
At surface

1495 FNL - 2645 FEL  
At proposed prod. zone

14. DISTANCE IN MILES AND DIRECTION FROM NEAREST TOWN OR POST OFFICE\*

26 miles NE of Aztec, New Mexico

15. DISTANCE FROM PROPOSED\*

LOCATION TO NEAREST  
PROPERTY OR LEASE LINE, FT.  
(Also to nearest drlg. unit line, if any) 1495'

16. NO. OF ACRES IN LEASE

1131

17. NO. OF ACRES ASSIGNED

TO THIS WELL  
N/ 317.19

18. DISTANCE FROM PROPOSED LOCATION\*

TO NEAREST WELL, DRILLING, COMPLETED,  
OR APPLIED FOR, ON THIS LEASE, FT. 115'

19. PROPOSED DEPTH

3644'

20. ROTARY OR CABLE TOOLS

Rotary

21. ELEVATIONS (Show whether DF, RT, GR, etc.)

6845' GL

22. APPROX. DATE WORK WILL START\*

July 1, 1990

23.

This action is subject to technical and  
procedural review pursuant to 43 CFR 3165.3  
and 43 CFR 3165.4 PROGRAM

DRILLING OPERATIONS AUTHORIZED ARE  
SUBJECT TO COMPLIANCE WITH ATTACHED  
GENERAL REQUIREMENTS

SIZE OF HOLE	SIZE OF CASING	WEIGHT PER FOOT	SETTING DEPTH	QUANTITY OF CEMENT
12 1/4"	9 5/8"	36#	300'	236 cuft/circulate to surface
8 3/4"	7"	23#	3300"	890 cuft/circulate to surface
6 1/4"	5 1/2"	23#	3224-3644'	39 cuft/ circulate to top of

liner

Drill 12 1/4" hole to + 300'. Run surface casing cement to surface. WOC 12 hours. Pressure test to 600 psi/30 mins. Drill @8 3/4" hole to 3300' with fresh water mud. No poisonous gases or abnormal pressures are anticipated. Run intermediate casing and cement to surface WOC 12 hours. Pressure test to 1500 psi/30 minutes. Drill a 6 1/4" hole to T.D. using air or air/water combination. Run a mud logging unit while drilling this interval run, the production liner. The liner will be cemented if the wells natural flow capacity indicates the need for fracture stimulation.

RECEIVED  
NOV 08 1990

OIL CON. DIV  
DIST. 3

IN ABOVE SPACE DESCRIBE PROPOSED PROGRAM: If proposal is to deepen or plug back, give pertinent data on present productive zone and proposed new productive zone. If proposal is to drill or deepen directionally, give pertinent data on subsurface locations and measured and true vertical depths. Give blowout preventer program, if any.

24.

SIGNED

W.S. Montz

TITLE

Operator Representative

DATE

5/23/90

(This space for Federal or State office use)

PERMIT NO.

APPROVAL DATE

OCT 11 1990

APPROVED BY

TITLE

DATE

Ken Townsend

CONDITIONS OF APPROVAL, IF ANY:

FOR

AREA

NMOCD

\*See Instructions On Reverse Side

Submit to Appropriate  
District Office  
State Lease - 4 copies  
Fee Lease - 3 copies

State of New Mexico  
Energy, Minerals and Natural Resources Department

Form C-102  
Revised 1-1-89

OIL CONSERVATION DIVISION

P.O. Box 2088  
Santa Fe, New Mexico 87504-2088

DISTRICT I  
P.O. Box 1980, Hobbs, NM 88240

DISTRICT II  
P.O. Drawer DD, Artesia, NM 88210

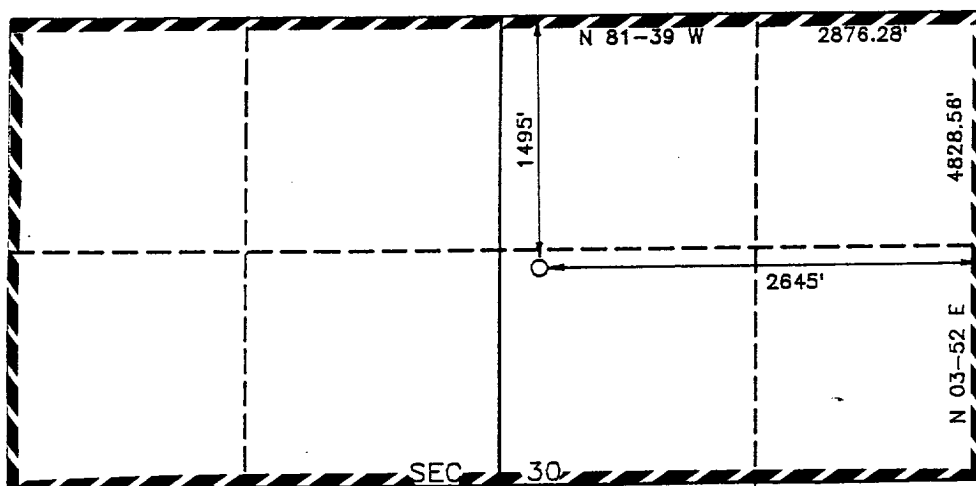
DISTRICT III  
1000 Rio Brazos Rd., Aztec, NM 87410

WELL LOCATION AND ACREAGE DEDICATION PLAT

All Distances must be from the outer boundaries of the section

Operator <b>C.N.G. DEVELOPMENT CO.</b>		Lease <b>GRASSY CANYON</b>		Well No. <b>1</b>
Unit Letter <b>G</b>	Section <b>30</b>	Township <b>T.32 N.</b>	Range <b>R.7 W.</b>	County <b>SAN JUAN COUNTY</b>
Actual Footage Location of Well: <b>1495</b> feet from the <b>NORTH</b> line and <b>2645</b> feet from the <b>EAST</b> line				
Ground level Elev. <b>6845</b>	Producing Formation <b>Fruitland Formation</b>	Pool <b>Basin Fruitland Coal</b>	Dedicated Acreage: <b>317-19</b> Acres	

- Outline the acreage dedicated to the subject well by colored pencil or hatchure marks on the plat below.
- If more than one lease is dedicated to the well, outline each and identify the ownership thereof (both as to working interest and royalty).
- If more than one lease of different ownership is dedicated to the well, have the interest of all owners been consolidated by communitization, unitization, force-pooling, etc.?  
☐ Yes ☐ No If answer is "yes" type of consolidation \_\_\_\_\_  
If answer is "no" list the owners and tract descriptions which have actually been consolidated. (Use reverse side of this form if necessary.)  
No allowable will be assigned to the well until all interests have been consolidated (by communitization, unitization, forced-pooling, or otherwise) or until a non-standard unit, eliminating such interest, has been approved by the Division.

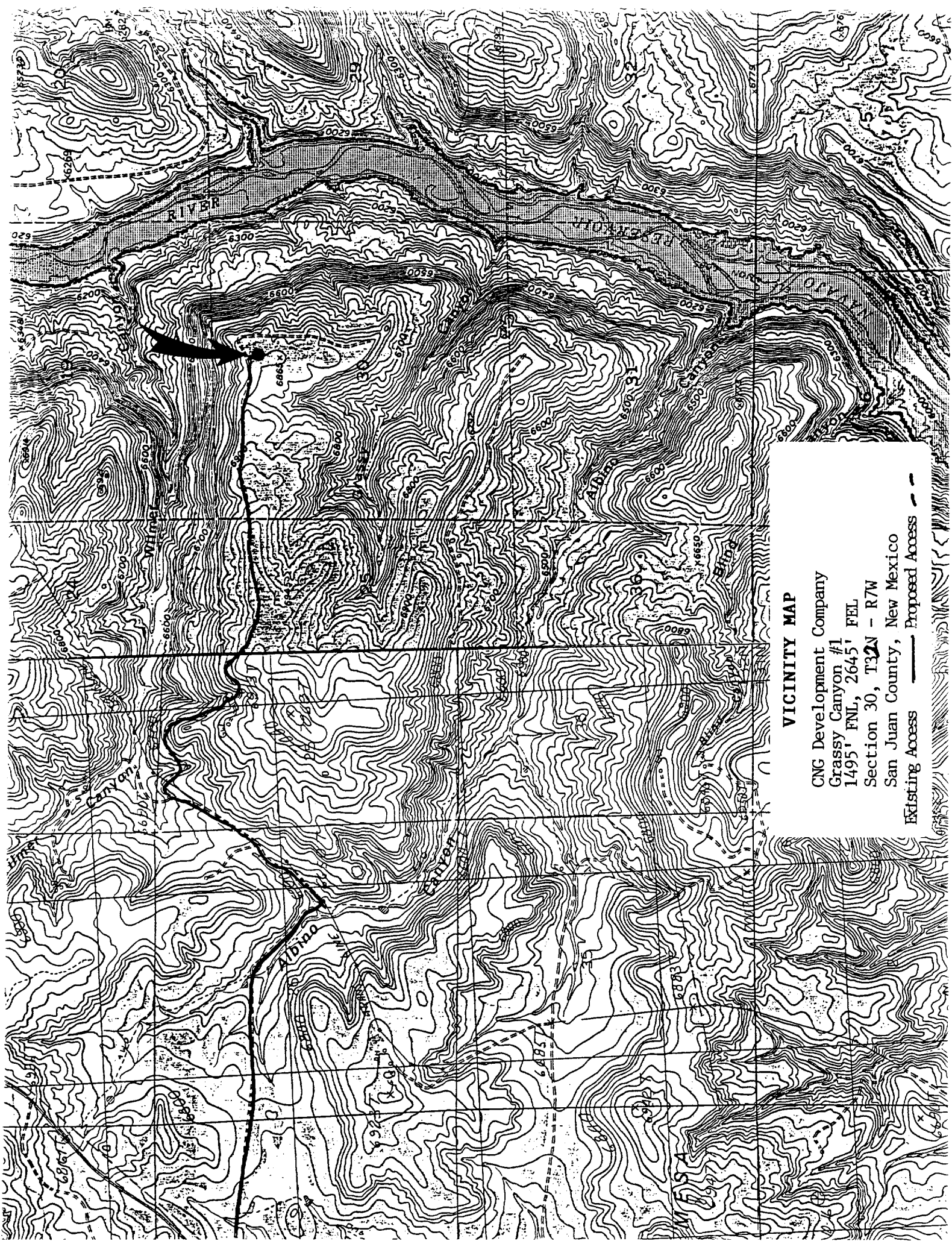


**RECEIVE**  
NOV 08 1990  
OIL CON. DIV  
DIST. 3

**OPERATOR CERTIFICATION**  
I hereby certify that the information contained herein is true and complete to the best of my knowledge and belief.  
Signature \_\_\_\_\_  
James S. Marshall  
Printed Name  
Vice-President  
Position  
Raven Ridge Resources  
Company  
May 22, 1990  
Date

**SURVEYOR CERTIFICATION**  
I hereby certify that the well location shown on this plat was plotted from field notes of actual surveys made by me or under my supervision, and that the same is true and correct to the best of my knowledge and belief.  
Date Surveyed \_\_\_\_\_  
Signature & Seal of Professional Surveyor \_\_\_\_\_  
R. HOWARD DAGGE  
Certificate No. \_\_\_\_\_  
Registered Professional Land Surveyor

0 330 660 990 1320 1650 1980 2310 2640 2000 1500 1000 500 0



### VICINITY MAP

CNG Development Company  
Grassy Canyon #1  
1495' FNL, 2645' FEL  
Section 30, T32N - R7W  
San Juan County, New Mexico

Existing Access — Proposed Access - -