

UNITED STATES
DEPARTMENT OF THE INTERIOR
BUREAU OF LAND MANAGEMENT

APPLICATION FOR PERMIT TO DRILL, DEEPEN, OR PLUG BACK

1a. TYPE OF WORK

DRILL ☒

DEEPEN ☐

PLUG BACK ☐

b. TYPE OF WELL

OIL
WELL ☐

GAS
WELL ☐

OTHER

SWD

SINGLE
ZONE ☐

MULTIPLE
ZONE ☐

2. NAME OF OPERATOR

Phillips Petroleum Company

3. ADDRESS OF OPERATOR

300 W. Arrington, Suite 200, Farmington, NM 87401

4. LOCATION OF WELL (Report location clearly and in accordance with any State requirements.)

At surface Unit M, 735' FSL & 761' FWL

At proposed prod. zone Same as above

14. DISTANCE IN MILES AND DIRECTION FROM NEAREST TOWN OR POST OFFICE*

Approx. 7.0 miles south from Allison, Colorado

10. DISTANCE FROM PROPOSED*

LOCATION TO NEAREST
PROPERTY OR LEASE LINE, FT.
(Also to nearest drlg. unit line, if any)

735' FSL

16. NO. OF ACRES IN LEASE

1718.91 Acres

18. DISTANCE FROM PROPOSED*

TO NEAREST WELL, DRILLING, COMPLETED,
OR APPLIED FOR, ON THIS LEASE, FT.

85' from #51

19. PROPOSED DEPTH

9600' ±

17. NO. OF ACRES ASSIGNED
TO THIS WELL

0

20. ROTARY OR CABLE TOOLS

Rotary

21. ELEVATIONS (Show whether DF, RT, GR, etc.)

6750' GL (Unprepared)

22. APPROX. DATE WORK WILL START*

Upon Approval

23. PROPOSED CASING AND CEMENTING PROGRAM

| SIZE OF HOLE | SIZE OF CASING | WEIGHT PER FOOT | SETTING DEPTH | QUANTITY OF CEMENT |
|--------------|----------------|-----------------|---------------|-------------------------------------|
| 26" | 20" | 94#, K-55, ST&C | 490' | 900 Sx, Circ to Surface |
| 17-1/2" | 13-3/8" | 68#&72#, N-80 | 3850' | See Attachment I, Circ to Surface |
| 12-1/4" | 9-5/8" | 40#, S-95 | 6950' | See Attachment I, Circ to Liner Top |
| 8-3/4" | 7" | 26#, N-80&S-95 | 9600' | See Attachment I |

RECEIVED

MAY 20 1991

OIL CON. DIV.
DIST. 3

SEE ATTACHED CEMENT & MUD PROGRAMS
BOP EQUIPMENT: See Fig. 7-7 or 7-8

"Approval of this action does
not warrant that the applicant
holds legal or equitable rights
or title to this lease."

IN ABOVE SPACE DESCRIBE PROPOSED PROGRAM: If proposal is to deepen or plug back, give data on present productive zone and proposed new productive zone. If proposal is to drill or deepen directionally, give pertinent data on subsurface locations and measured and true vertical depths. Give blowout prevention program, if any.

SIGNED L. E. Robinson
L. E. Robinson
(This space for Federal or State office use)

TITLE Sr. Drlg. & Prod. Engr.

APPROVED
AS AMENDED

PERMIT NO. _____

APPROVAL DATE _____

APPROVED BY _____
CONDITIONS OF APPROVAL, IF ANY:

TITLE _____

AREA MANAGER

*See Instructions On Reverse Side

Submit to Appropriate
District Office
State Lease - 4 copies
Fee Lease - 3 copies

State of New Mexico
Energy, Minerals and Natural Resources Department

RECEIVED Form C-102
BLM Revised 1-1-89

OIL CONSERVATION DIVISION

P.O. Box 2088
Santa Fe, New Mexico 87504-2088

91 MAR 14 PM 4:01

019 FARMINGTON, N.M.

DISTRICT I
P.O. Box 1980, Hobbs, NM 88240

DISTRICT II
P.O. Drawer DD, Artesia, NM 88210

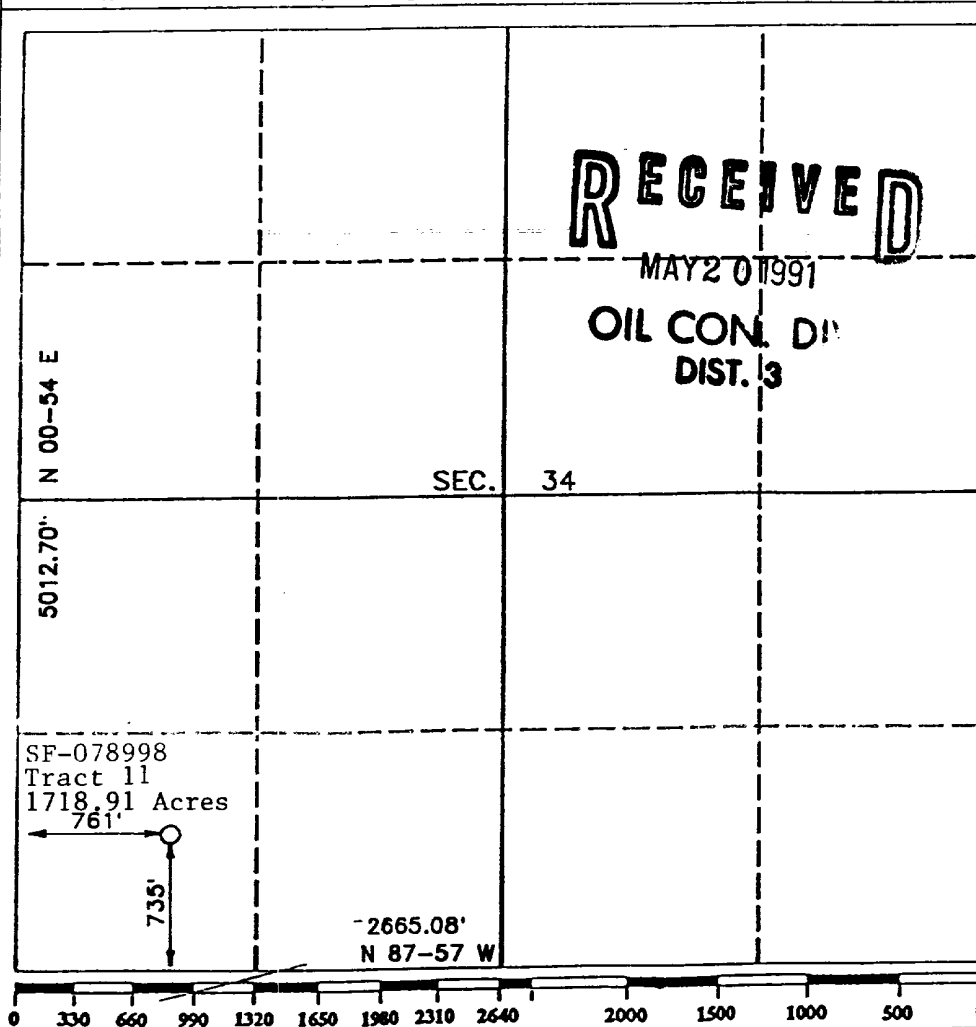
DISTRICT III
1000 Rio Brazos Rd., Aztec, NM 87410

WELL LOCATION AND ACREAGE DEDICATION PLAT

All Distances must be from the outer boundaries of the section

| | | | | | | | | |
|--|---------------|---|---------------------------------|---------------------------------------|---------------------------|-------------------------------|--|--|
| Operator PHILLIPS PETROLEUM | | | Lease SAN JUAN 32-7 UNIT SWD | | | Well No. 301 SWD | | |
| Unit Letter M | Section 34 | Township T.32 N. | Range R.7 W. | NMPM | County SAN JUAN COUNTY | | | |
| Actual Footage Location of Well: 735 feet from the SOUTH line and 761 feet from the WEST line | | | | | | | | |
| Ground level Elev. 6750 | | Producing Formation Morrison-Entrada | | Pool Undesignated Morrison-Entrada | | Dedicated Acreage: 0 Acres | | |

1. Outline the acreage dedicated to the subject well by colored pencil or hatchure marks on the plat below.
2. If more than one lease is dedicated to the well, outline each and identify the ownership thereof (both as to working interest and royalty).
3. If more than one lease of different ownership is dedicated to the well, have the interest of all owners been consolidated by communitization, unitization, force-pooling, etc.?
☐ Yes ☐ No If answer is "yes" type of consolidation _____
If answer is "no" list the owners and tract descriptions which have actually been consolidated. (Use reverse side of this form if necessary.)
No allowable will be assigned to the well until all interests have been consolidated (by communitization, unitization, forced-pooling, or otherwise) or until a non-standard unit, eliminating such interest, has been approved by the Division.



OPERATOR CERTIFICATION

I hereby certify that the information contained herein is true and complete to the best of my knowledge and belief.

Signature
L. E. Robinson
Printed Name
L. E. Robinson
Position
Sr. Drilg. & Prod. Engr.
Company
Phillips Petroleum Co.
Date
March 13, 1991

SURVEYOR CERTIFICATION

I hereby certify that the well location shown on this plat was plotted from field notes of actual surveys made by me or under my supervision, and that the same is true and correct to the best of my knowledge and belief.

Date Surveyed
APRIL 26, 1990
Signature & Seal of
Professional Surveyor
R. HOWARD DAGGETT
9679
Certificate No.
9679
Registered Professional
Land Surveyor

SURFACE USE PLAN

Phillips Petroleum Company , San Juan 32-7 Unit, Well No. 301SWD, SW/4 SW/4, Section 34, T-32-N, R-7-W, San Juan County, New Mexico. (Lease No. SF-078998). This plan is to accompany "Application for Permit to Drill" the subject well which is located approximately 7.0 miles south from Allison, Colorado. The following is a discussion of pertinent information concerning the possible effect which the proposed drilling well may have on the environment of the well and road sites and surrounding acreage. A copy will be posted on the derrick floor so that all contractors and sub-contractors will be aware of all items of this plan.

1. Existing Roads:

- A. To reach the proposed location, start from Farmington, N.M. take N.M. 550 approximately 22 miles to Bondad, N.M. Turn right on Highway 310 and travel approximately 18 miles to Ignacio, Co. Follow Highway 172 from Ignacio, Co. for 13 miles to Colorado County Road 330. Turn right and follow 330 until it changes to San Juan County Road 4020. Follow 4020 approximately 6.8 miles until it changes to County Road 4000 and then follow access road approximately 500' to location. The access road into the location is located in the SW/SW of section 34.

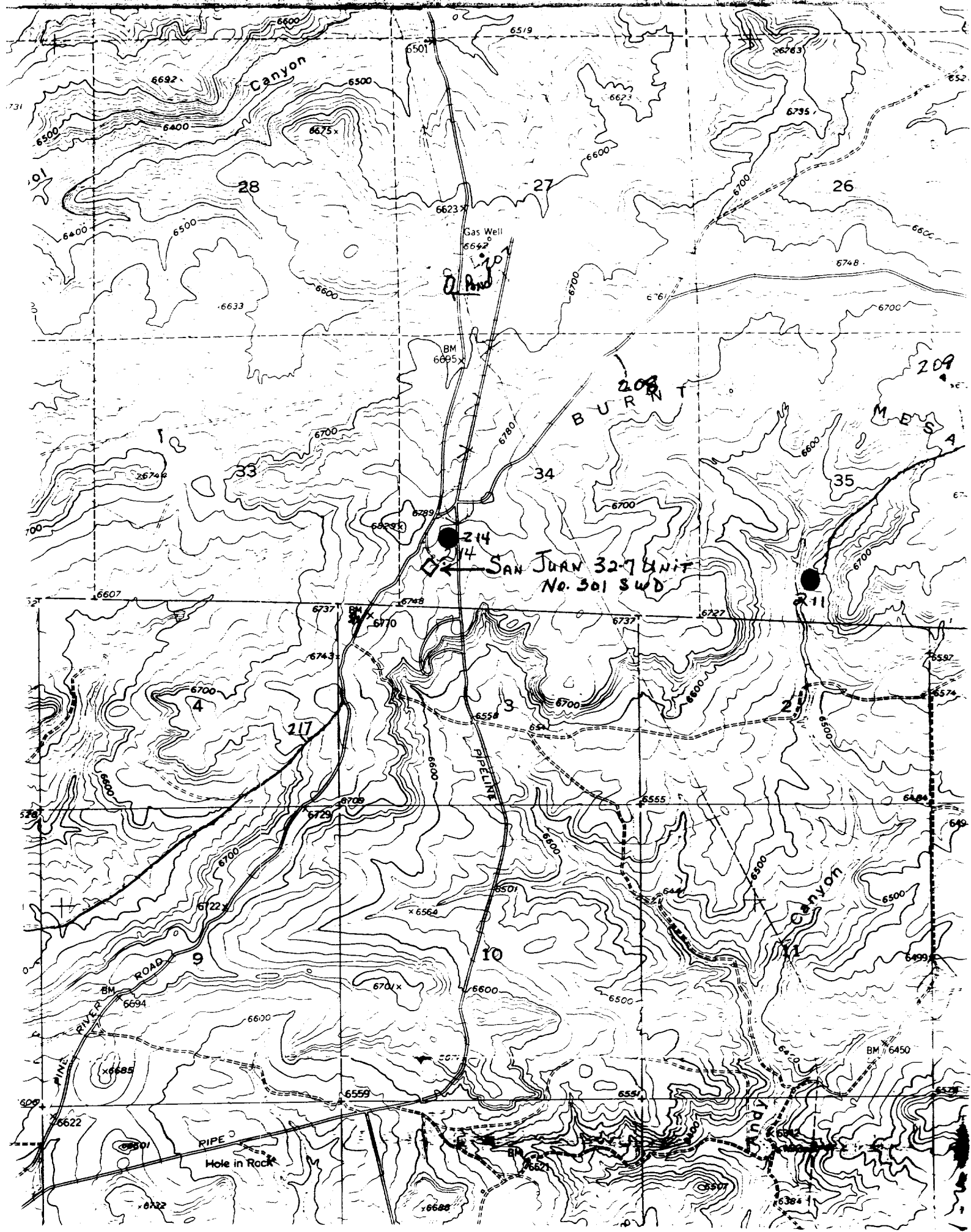
2. Planned Access Roads:

- A. The access road is shown on the attached map. The new location is adjacent to an existing access road that exits from Pine River Road, therefore no new access road is needed. All existing roads used to access the proposed location shall be maintained in the same or better condition than presently found. If needed, the access road will be rocked. The access road is to be classified "Temporary Resource Road."
- B. Turnouts: None.
- C. Drainage Design: The present drainage will be maintained for the existing access road. After Well No. 301 is completed, a diversion cut will be below the cut on the west side with drainage to the south.
- D. Culverts, Cuts and Fills: See Cut and Fill Sketch.
- E. Surfacing Material: Natural materials at well site.
- F. Gates, Cattle Guards, Fences: As required
- G. Proposed Road: No new access road needed.

3. Locations of Existing Wells: Well No. 51, 820' FSL & 980' FWL

4. Locations of Tank Batteries, SWD Facilities, and Service Lines:

SWD facilities will be located on the drill pad. The actual placement of the equipment will be determined when the well's injection characteristics can be evaluated after completion. To protect livestock and wildlife, the reserve pit will be fenced with wire mesh. Upon completion of drilling, the location



00+217

52+177

05+177

52+177

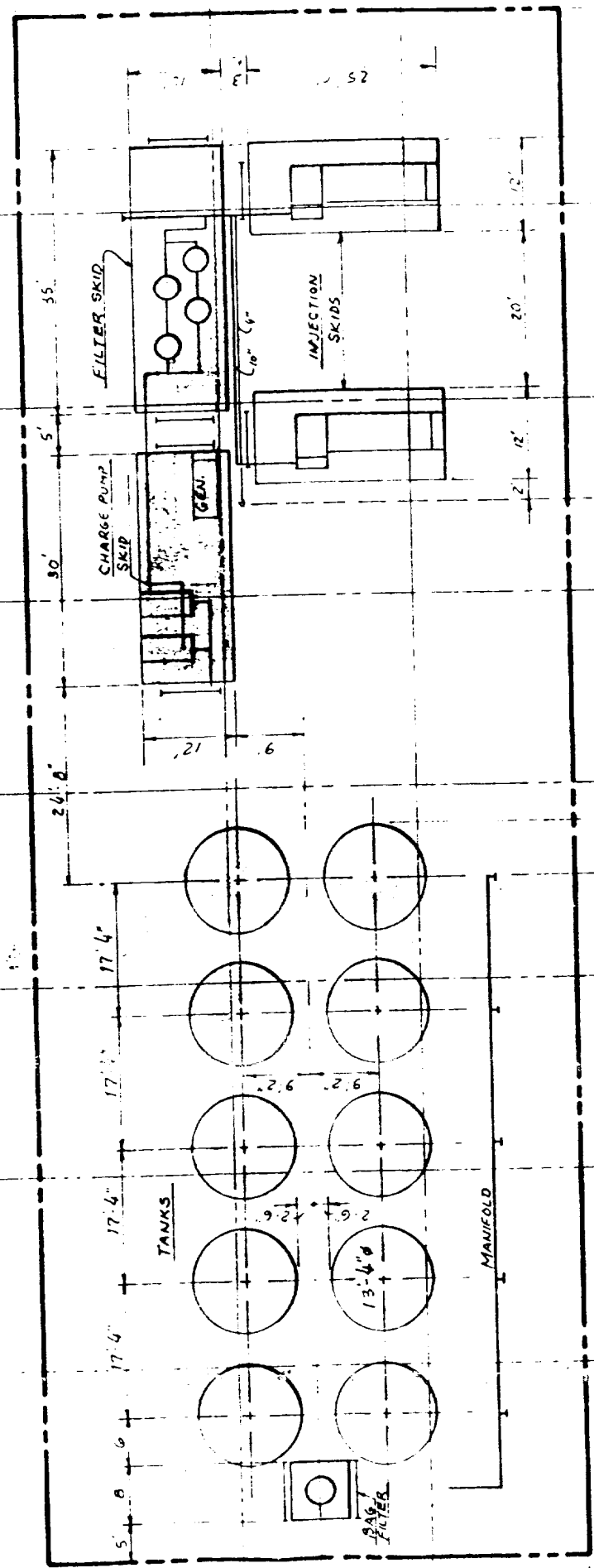
00+177

52+075

50+50

52+025

00+0

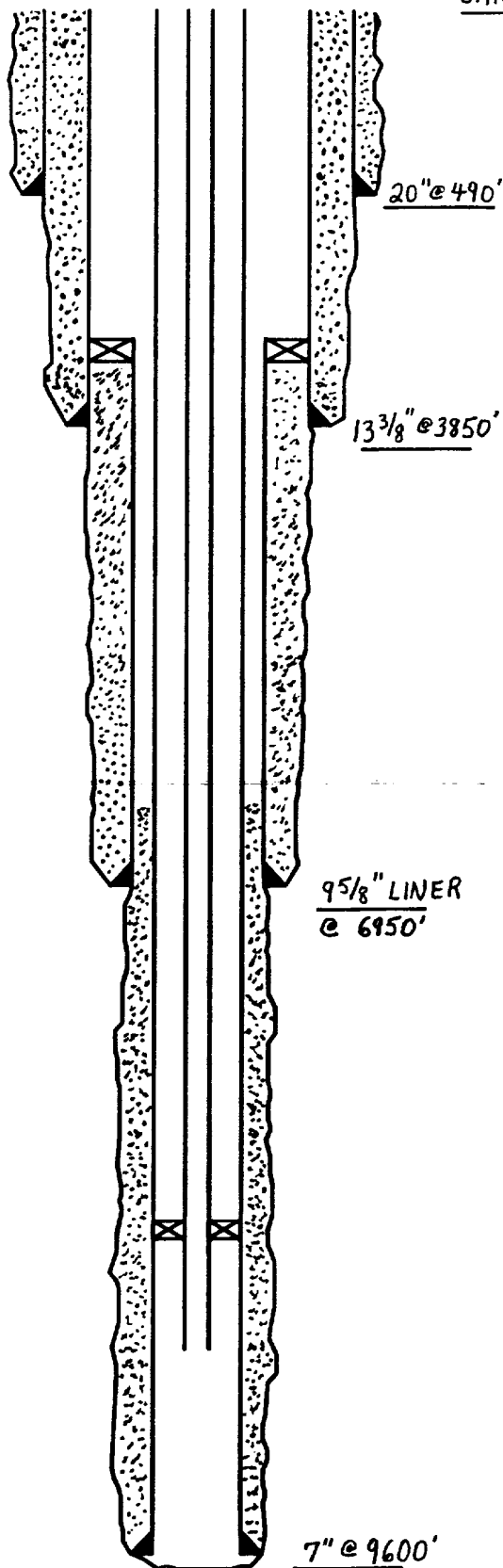


SCALE 1" = 20' 0"

**Phillips Petroleum Company
Farmington Area**

**Salt Water Disposal Well
Casing Design**

SAN JUAN 32-7 #301 SWD : PROPOSED



Casing/Tubulars Program

| | Size (in) | Grade | Setting Depth (ft) |
|--------------------|----------------|-----------|---------------------------|
| Conductor | 20" 94#/ft | K-55 ST&C | 490' |
| Surface | 13 3/8" 68#/ft | N-80 | 3050' |
| | 13 3/8" 72#/ft | N-80 | 3850' |
| Intermediate Liner | 9 5/8" 40#/ft | S-95 | Top 3670' Bottom 6950' |
| Production | 7" 29#/ft | L-80 | 380' |
| | 7" 26#/ft | N-80 | 592' |
| | 7" 26#/ft | S-95 | 9600' |
| Tubing | 3 1/2" 9.3#/ft | N-80 | 8700' |

Cement Program

| | Lead | Tail | Comments |
|--------------|--|--|--|
| Conductor | 800 SKS CL "8" @ 15.6 ppq 1.18 ft ³ /sx | 100 SKS CL "8" w/ 3% C.Cl ₂ @ 15.6 ppq 1.18 ft ³ /sx | Circulate cement to surface |
| Surface | See Attachment I | See Attachment I | Circulate cement to surface |
| Intermediate | See Attachment I | See Attachment I | Circulate cement to top of liner |
| Production | See Attachment I | See Attachment I | Circulate cement above 9 5/8" liner shoe @ 6950' |

ATTACHMENT I: CEMENTING PROGRAMS

13-3/8" CASING:

Cement I = 65:35 (Class "B":Fly Ash) with 6% Bentonite, 10 lb/sx Gilsonite and 2% KCl (by weight of mix water); 12.4 ppg & 1.87 ft³/sx.

Cement II = Class "B" neat cement @ 15.6 ppg & 1.18 ft³/sx.

Two stage cement job with stage tool set at approximately 2700'.

First Stage: Lead: 350 Sxs Cement I
 Tail: 500 Sxs Cement II

Second Stage: Lead: 1650 Sxs Cement I
 Tail: 200 Sxs Cement II

9-5/8" CASING:

Lead: 1125 Sxs 50:50 (Class "B":Fly Ash) with 2% Bentonite, 0.8% Halad-9 (Fluid Loss), 1/4 lb/sx Flocele and 2% KCl (by weight of mix water); 13.6 ppg & 1.26 ft³/sx.

Tail: 100 Sxs Class "B" cement with 0.8% Halad-9 (Fluid Loss), 0.4% CFR-3 (Friction Reducer) and 1/4 lb/sx Flocele; 15.6 ppg & 1.18 ft³/sx.

7" CASING:

950 Sxs Class "G" cement with 40% Silica Flour (Fine-Grained), 0.6% Halad-423 (Fluid Loss), 0.2% CFR-2 (Friction Reducer), 0.2% HR-12 (High-Temperature Retardent) and 6 lbs/sx Gilsonite; 15.5 ppg & 1.62 ft³/sx.

