

Submit to Appropriate
District Office
State Lease - 6 copies
Fee Lease - 5 copies

State of New Mexico
Energy, Minerals and Natural Resources Department

Form C-101
Revised 1-1-89

DISTRICT I
P.O. Box 1980, Hobbs, NM 88240

DISTRICT II
P.O. Drawer DD, Artesia, NM 88210

DISTRICT III
1000 Rio Brazos Rd., Aztec, NM 87410

OIL CONSERVATION DIVISION
P.O. Box 2088
Santa Fe, New Mexico 87504-2088

API NO. (assigned by OCD on New Wells)
30-045-28616 ✓

5. Indicate Type of Lease

STATE ☐

FEE ☒

6. State Oil & Gas Lease No.

APPLICATION FOR PERMIT TO DRILL, DEEPEN, OR PLUG BACK

1a. Type of Work:

DRILL ☒

RE-ENTER ☐

DEEPEN ☐

PLUG BACK ☐

b. Type of Well:

OIL
WELL ☐

GAS
WELL ☒

OTHER ☐

SINGLE
ZONE ☒

MULTIPLE
ZONE ☒

7. Lease Name or Unit Agreement Name

Webb Gas Com

8. Well No.

#1 (S/320/320)

9. Pool name or Wildcat

Basin Dakota / Fruitland Coal

4. Well Location

Unit Letter

K : 1470

Feet From The

South

Line and

1850

Feet From The

West

Line

Section

5

Township

31N

Range

10W

NM/PM

San Juan

County

10. Proposed Depth

7500'

11. Formation

12. Rotary or C.T.

Rotary

13. Elevations (Show whether DF, RT, GR, etc.)

5802 GL ✓

14. Kind & Status Plug. Bond

State-Wide

15. Drilling Contractor

Unknown

16. Approx. Date Work will start

As soon as Permitted

PROPOSED CASING AND CEMENT PROGRAM

SIZE OF HOLE	SIZE OF CASING	WEIGHT PER FOOT	SETTING DEPTH	SACKS OF CEMENT	EST. TOP
12 1/4"	9 5/8"	36#	400'	320 cf Cl.B	Surface
8 3/4"	7"	23#	2900'	812 cf Cl.B	Surface
6 1/2"	4 1/2" liner	11.6#	7500'	642 cf	

Liner 2700-7500 [TD - (ICP-200) X .13]

2 3/8" tubing

Please see attached detailed drilling program.

APPROVAL EXPIRES 4-18-92
UNLESS DRILLING IS COMMENCED.
SPUD NOTICE MUST BE SUBMITTED
WITHIN 10 DAYS.

RECEIVED
OCT 17 1991
OIL CON. DIV
DIST. 3

IN ABOVE SPACE DESCRIBE PROPOSED PROGRAM: IF PROPOSAL IS TO DEEPEN OR PLUG BACK, GIVE DATA ON PRESENT PRODUCTIVE ZONE AND PROPOSED NEW PRODUCTIVE ZONE. GIVE BLOWOUT PREVENTER PROGRAM, IF ANY.

I hereby certify that the information above is true and complete to the best of my knowledge and belief.

SIGNATURE

J. L. Hampton

TITLE

Sr. Staff Admin. Supr.

DATE

10/16/91

TYPE OR PRINT NAME

J.L. Hampton

TELEPHONE NO.

(This space for State Use)

APPROVED BY

Emile Lopez

DEPUTY OIL & GAS INSPECTOR, DIST. #3

TITLE

DATE

OCT 18 1991

CONDITIONS OF APPROVAL, IF ANY:

Hold E-104 for UIC or DHC Approval

6011117
10
VIA POSTO
C. 100

10011117
10
VIA POSTO
C. 100

Amoco proposes to drill the well to further develop the Dakota reservoir. The well will be drilled to the surface casing point using native mud. The well will then be drilled to the intermediate casing point with a non-dispersed mud system. The attached modified 12" 3000 psi blowout preventer will be used. Amoco will complete the Dakota with fracture stimulations.

SURFACE CASING

<u>Quantity</u>	<u>Size</u>	<u>Weight</u>	<u>Description</u>	<u>Cement Program</u>
400'	9 5/8"	36#	K55 ST&C	320 cf Class B, 2% CaCl2 15.6 ppg

INTERMEDIATE CASING

<u>Quantity</u>	<u>Size</u>	<u>Weight</u>	<u>Description</u>	<u>Cement Program</u>
2900'	7"	23#	N80 LT&C	812 cf Class B, 65:35:5 10% salt .25% dispersant 13.1 ppg 118 cf Class B 2% CaCl2 15.6 ppg

PRODUCTION LINER

<u>Setting Depth</u> <u>Quantity</u>	<u>Size</u>	<u>Weight</u>	<u>Description</u>	<u>Cement Program</u>
2700'-7500'	4 1/2"	11.6#	N80 LT&C	642 cf 50/50 poz, w/2% gel, 10% salt, .7% fluid loss add. (properties of cement: 5.24 gal/sack, yield 1.21 cf/sack, density of slurry 13.9 ppg) Tail with 65 cf Cl G cement, 35% silica flour with .75 % friction reducer and ret. for 3 hrs. pumping

EVALUATION

Please see the attached drilling and completion program.

Submit to Appropriate
District Office
State Lease - 4 copies
Fee Lease - 3 copies

State of New Mexico
Energy, Minerals and Natural Resources Department

Form C-102
Revised 1-1-89

OIL CONSERVATION DIVISION

P.O. Box 2088
Santa Fe, New Mexico 87504-2088

DISTRICT I
P.O. Box 1980, Hobbs, NM 88240

DISTRICT II
P.O. Drawer DD, Artesia, NM 88210

DISTRICT III
1000 Rio Brazos Rd., Aztec, NM 87410

WELL LOCATION AND ACREAGE DEDICATION PLAT

All Distances must be from the outer boundaries of the section

Operator AMOCO PRODUCTION COMPANY			Lease WEBB GAS COM		Well No. # 1
Unit Letter K	Section 5	Township 31 NORTH	Range 10 WEST	County NMPM SAN JUAN	
Actual Footage Location of Well: 1470 feet from the SOUTH line and 1850 feet from the WEST line					
Ground level Elev. 5802	Producing Formation Dakota/Fruitland coal		Pool Basin Dakota/Fruitland Coal	Dedicated Acreage: 5/2 328/320 Acres	

1. Outline the acreage dedicated to the subject well by colored pencil or hatchure marks on the plat below.
2. If more than one lease is dedicated to the well, outline each and identify the ownership thereof (both as to working interest and royalty).
3. If more than one lease of different ownership is dedicated to the well, have the interest of all owners been consolidated by communitization, unitization, force-pooling, etc.?
☐ Yes ☐ No If answer is "yes" type of consolidation _____
If answer is "no" list the owners and tract descriptions which have actually been consolidated. (Use reverse side of this form if necessary.) _____
No allowable will be assigned to the well until all interests have been consolidated (by communitization, unitization, forced-pooling, or otherwise) or until a non-standard unit, eliminating such interest, has been approved by the Division.

OPERATOR CERTIFICATION

I hereby certify that the information contained herein is true and complete to the best of my knowledge and belief.

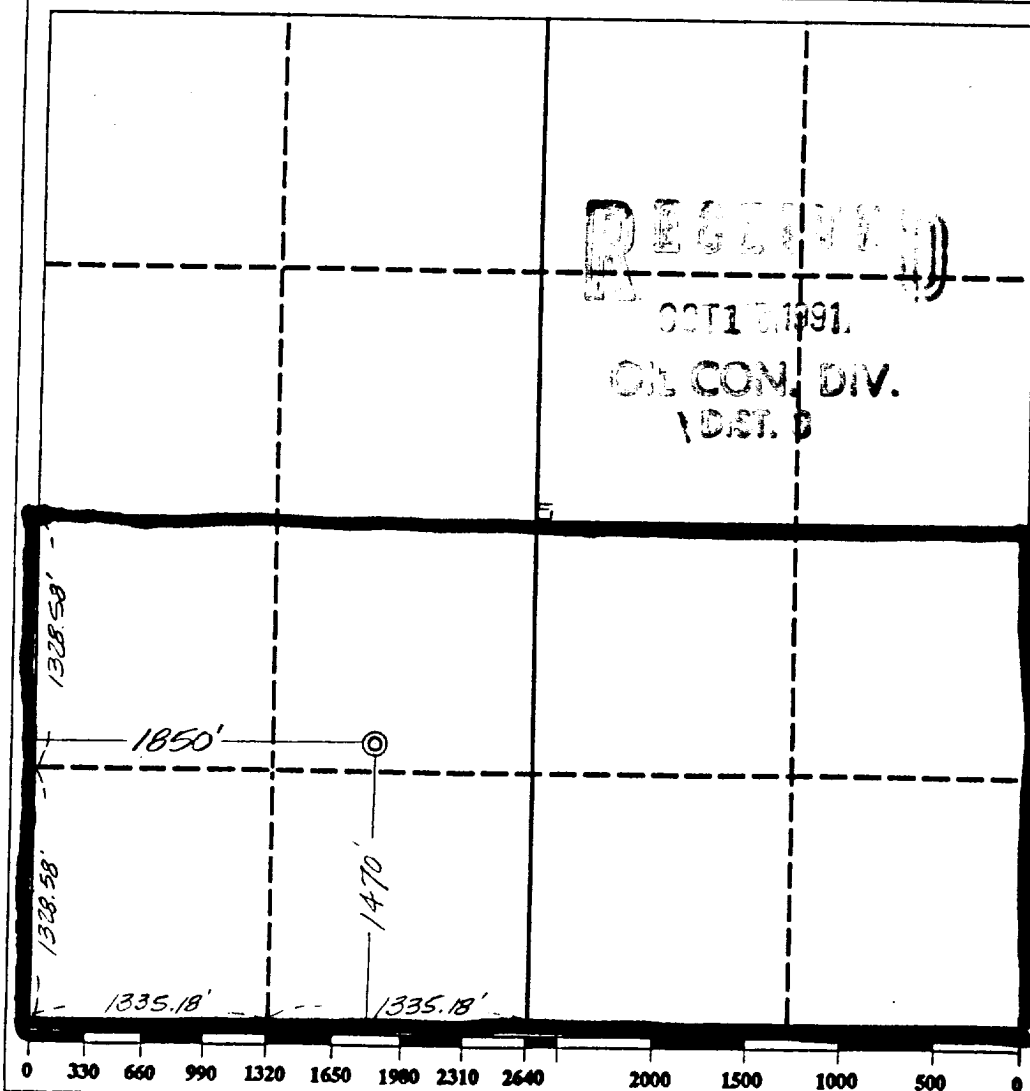
Signature J. L. Hampton / cub
Printed Name J. L. Hampton
Position SR Staff Admin Supv.
Company Amoco Prod. Co.
Date 10/15/91

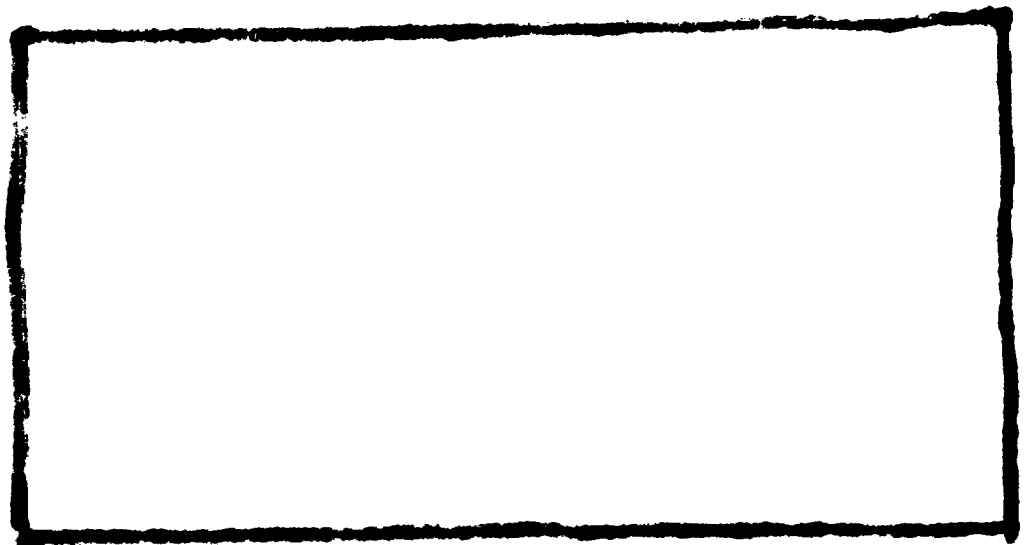
SURVEYOR CERTIFICATION

I hereby certify that the well location shown on this plat was plotted from field notes of actual surveys made by me or under my supervision, and that the same is true and correct to the best of my knowledge and belief.

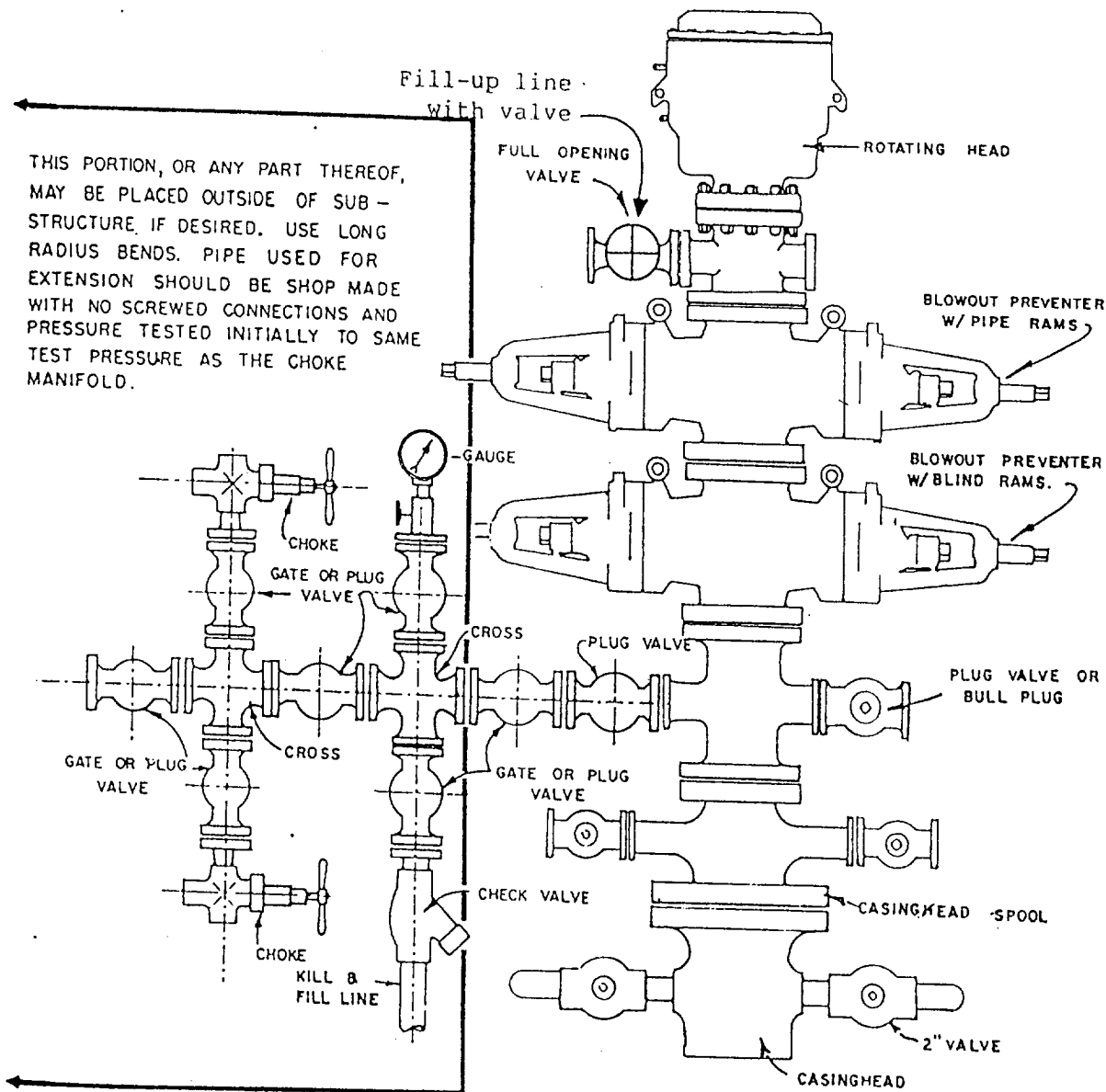
Date Surveyed
October 4, 1991

Signature & Seal of Professional Surveyor
GARY D. VANN
7016
Gary Vann
7016





1. Upper kelly cock valve, with handle will be utilized.
2. There will be safety valves and subs to fit all drill strings in use.



BLOWOUT PREVENTER HOOKUP

SAN JUAN BASIN
DAKOTA FORMATION
PRESSURE CONTROL EQUIPMENT

Background

The objective Dakota formation maximum surface pressure is anticipated to be 1400 PSI, based on completion testing. Pressure control equipment working pressure minimum requirements are therefore 2000 PSI. Equipment to be used will conform to API RP-53 (Figure 2.C.2) for a 2000 PSI system per Federal Onshore Order No. 2. Due to available conventional equipment within the area, 3000 PSI rated pressure control equipment will typically be utilized in a double ram type arrangement. Regional drilling rigs to be utilized have substructure height limitations which exclude use of annular preventers; therefore a rotating head will be installed above these rams. This pressure control equipment will be utilized for conventional drilling below surface to total depth.

Prior to drilling below intermediate casing, a modified two (2) double ram pressure control equipment system will be installed. This system is designed for Dakota formation interval drilling with air and water. A service unit will typically be used to drill this interval, and the wellbore will be completed as an uncased open hole if commercial productivity is established. If not, the wellbore will be cased and cemented with a 4 1/2" contingency liner. Based upon maximum surface pressure criteria, 2000 PSI equipment is required. However, as stated above, 3000 PSI working pressure equipment will typically be utilized. The No. 3 pipe ram in Exhibit 2 will be 4 3/4" if 4 3/4" drill collars are run in the bottom hole assembly.

Equipment Specification

Interval

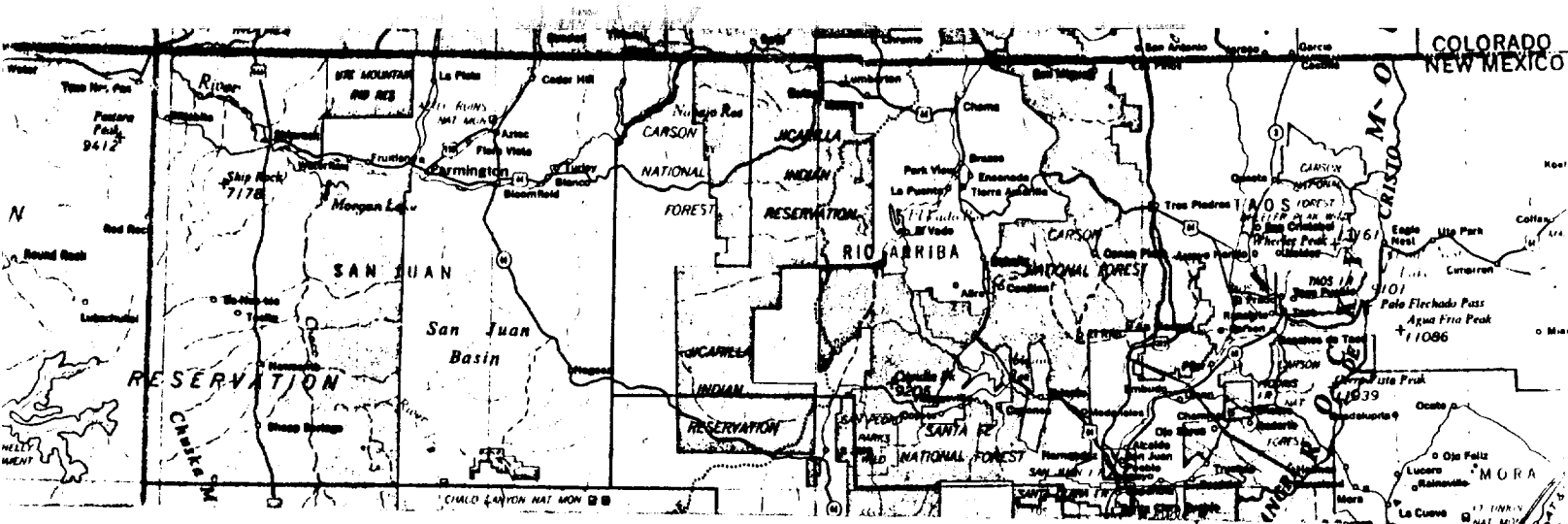
BOP Equipment

Below Surface Casing
to
Total Depth

12" nominal, 3000 PSI double ram
preventer with rotating head

All ram type preventers and related control equipment will be hydraulically tested to 250 PSI (low pressure) and 2000 PSI (high pressure), upon installation, following any repairs or equipment replacements, or at 30 day intervals. Accessories to BOP equipment will include kelly cock, floor safety valved and choke manifold which will also be tested to equivalent pressure.

Please direct any questions to Jim Davidson at (303) 830 - 4815 in our Denver office.



WEBB GAS COM # 1
 1470' F/SL 1850' F/WL
 SEC. 5, T31N, R10W, NMPM
 RAIL POINT: 151 miles - Montrose
 MUD POINT: 8 miles - Aztec
 CEMENT POINT: 22 miles - Farmington

WEBB GAS
 COM #1

NEW ROAD
 (810'±)

0.15
 0.13

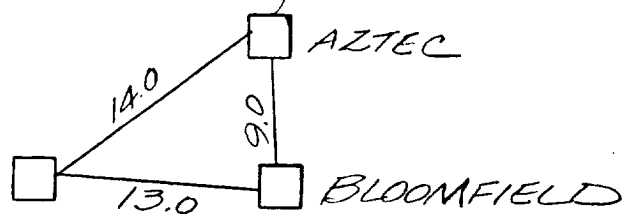
8.03

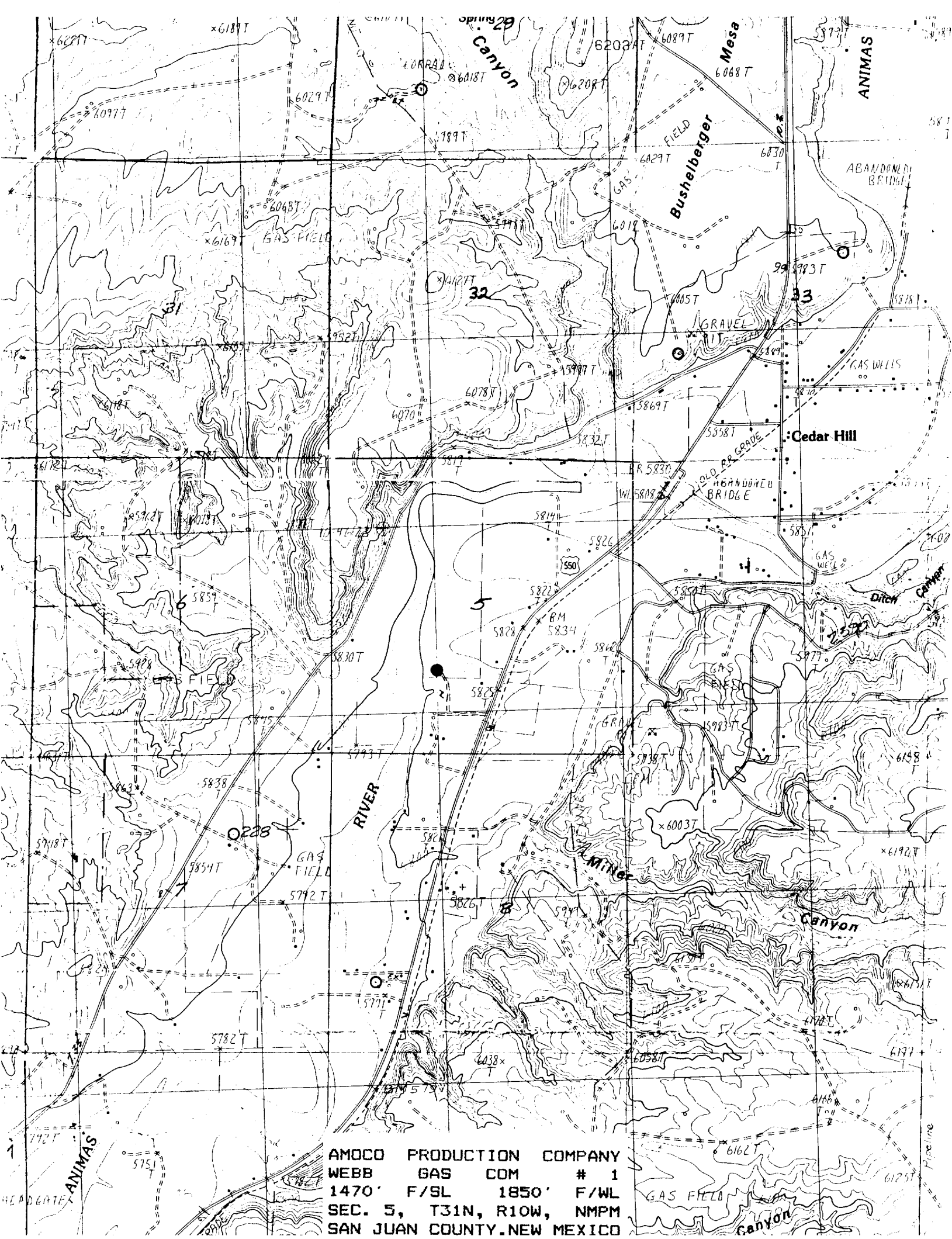
U.S. Hwy 550

AZTEC

BLOOMFIELD

FARMINGTON





AMOCO PRODUCTION COMPANY
WEBB GAS COM # 1
1470' F/SL 1850' F/WL
SEC. 5, T31N, R10W, NMPM
SAN JUAN COUNTY, NEW MEXICO