


UNITED STATES
DEPARTMENT OF THE INTERIOR
BUREAU OF LAND MANAGEMENT

APPLICATION FOR PERMIT TO DRILL, DEEPEN, OR PLUG BACK

1a. Type of Work DRILL	RECEIVED AUG - 2 1993	5. Lease Number SF-078459B
1b. Type of Well GAS		6. If Indian, All. or Tribe
2. Operator MERIDIAN OIL 14538	OIL CON. DIV. DIST. 3	7. Unit Agreement Name Allison Unit 6784
3. Address & Phone No. of Operator PO Box 4289, Farmington, NM 87499 (505) 326-9700		8. Farm or Lease Name Allison Unit 9. Well Number 16R
4. Location of Well 995' FSL, 2335' FWL Latitude 36° 58' 45", Longitude 107° 33' 41"		10. Field, Pool, Wildcat Blanco Mesa Verde 72319 11. Sec, Twn, Rge, Mer. N Sec 15, T-32-N, R-7-W NMPPM
14. Distance in Miles from Nearest Town 5 miles from Tiffany, CO	12. County San Juan	13. State NM
15. Distance from Proposed Location to Nearest Property or Lease Line 995'		
16. Acres in Lease 1978.050	This action is subject to technical and procedural review pursuant to 43 CFR 3165.3 and appeal pursuant to 43 CFR 3165.4.	17. Acres Assigned to Well 335.36 W/2
18. Distance from Proposed Location to Nearest Well, Drig, Compl, or Applied for on this Lease 523'		
19. Proposed Depth 6600'	DRILLING OPERATIONS AUTHORIZED ARE SUBJECT TO COMPLIANCE WITH ATTACHED "GENERAL REQUIREMENTS".	20. Rotary or Cable Tools Rotary
21. Elevations (DF, FT, GR, Etc.) 6860' GR		22. Approx. Date Work will Start 3rd quarter, 1993
23. Proposed Casing and Cementing Program See Operations Plan attached		
24. Authorized by:  Regional Drilling Engineer		Date 6/29/93

PERMIT NO. _____ APPROVAL DATE _____
APPROVED BY _____ TITLE _____ DATE _____

Archaeological Report submitted 5-26-93
Threatened and Endangered Species Report submitted 6-9-93
NOTE: This format is issued in lieu of U.S. BLM Form 3160-3

**APPROVED
AS AMENDED**

JUL 30 1993
DISTRICT MANAGER

NMOCD

NEL-3285

Submit to Appropriate
District Office
State Leases - 4 copies
Fee Leases - 3 copies

State of New Mexico
Energy, Minerals and Natural Resources Department

Form C-102
Revised 1-1-89

OIL CONSERVATION DIVISION

P.O. Box 2088
Santa Fe, New Mexico 87504-2088

DISTRICT I
P.O. Box 1980, Hobbs, NM 88240

DISTRICT II
P.O. Drawer DD, Artesia, NM 88210

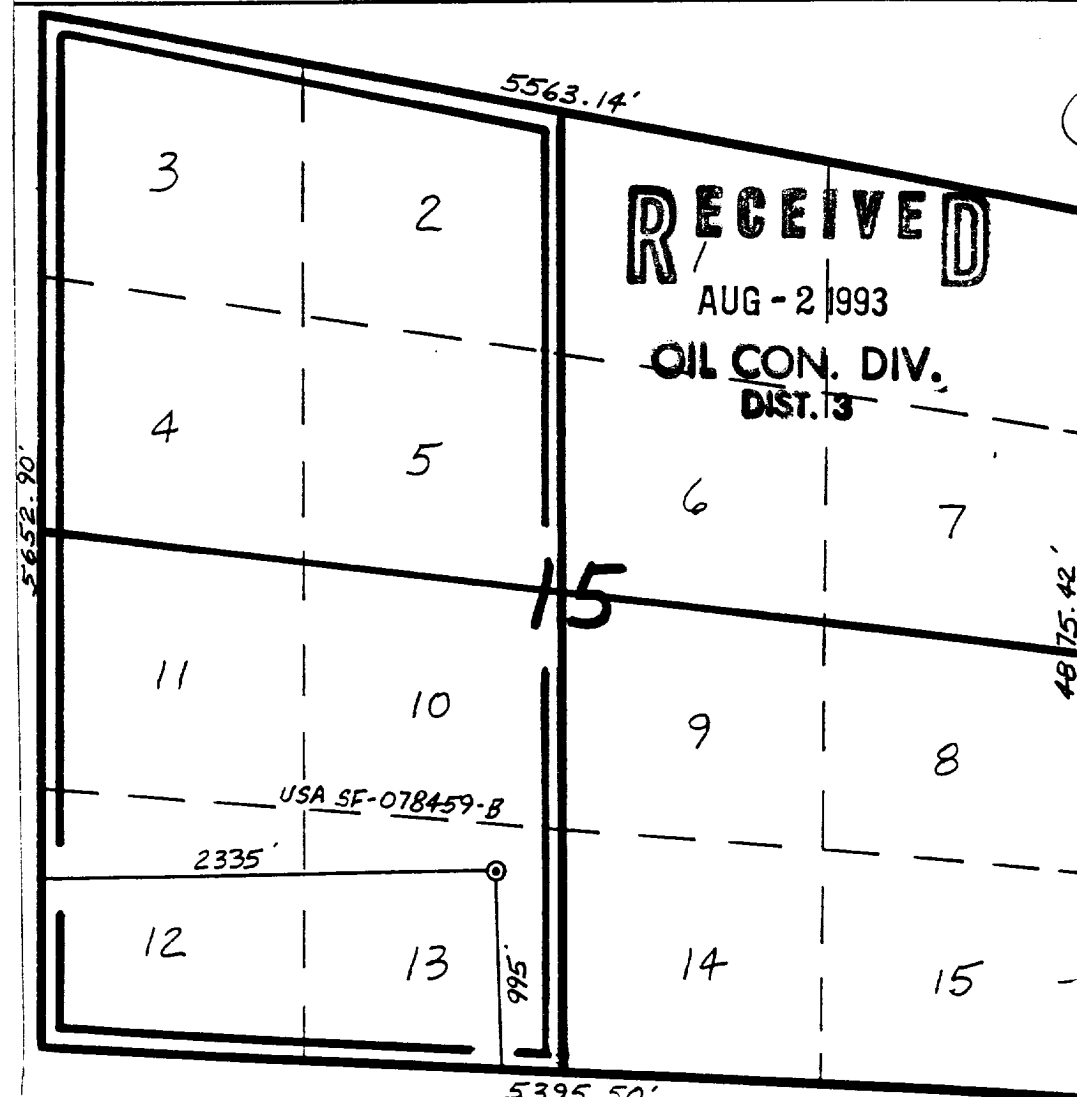
DISTRICT III
1000 Rio Brazos Rd., Aztec, NM 87410

WELL LOCATION AND ACREAGE DEDICATION PLAT

All Distances must be from the outer boundaries of the section

Operator Meridian Oil Inc.			Lease Allison Unit			Well No. 070 FARMINGTON, NM		
Unit Letter N	Section 15	Township 32 North	Range 7 West	County San Juan	NMPM			6R
Actual Footage Location of Well: 995 feet from the South line and 2335 feet from the West line								
Ground level Elev. 6860'		Producing Formation Mesa Verde		Pool Blanco		Dedicated Acreage: 335.36 Acres		

- Outline the acreage dedicated to the subject well by colored pencil or hatchure marks on the plat below.
- If more than one lease is dedicated to the well, outline each and identify the ownership thereof (both as to working interest and royalty).
- If more than one lease of different ownership is dedicated to the well, have the interest of all owners been consolidated by communitization, unitization, force-pooling, etc.?
☒ Yes ☐ No If answer is "yes" type of consolidation unitization
If answer is "no" list the owners and tract descriptions which have actually been consolidated. (Use reverse side of this form if necessary.)
No allowable will be assigned to the well until all interests have been consolidated (by communitization, unitization, forced-pooling, or otherwise) or until a non-standard unit, eliminating such interest, has been approved by the Division.



OPERATOR CERTIFICATION

I hereby certify that the information contained herein is true and complete to the best of my knowledge and belief.

Peggy Bradfield
Signature

Peggy Bradfield

Printed Name
Regulatory Affairs

Position
Meridian Oil Inc.

Company
6-28-93

Date

SURVEYOR CERTIFICATION

I hereby certify that the well location shown on this plat was plotted from field notes of actual surveys made by me or under my supervision, and that the same is true and correct to the best of my knowledge and belief. 4-23-93

Date Surveyed

Neale C. Edwards
Signature of Professional Surveyor

NEW MEXICO
6857
6857

Certificate No. 6857
NEALE C. EDWARDS

June 28, 1993

OPERATIONS PLANWell Name: Allison Unit #16RLocation: 995' FSL, 2335' FWL Section 15, T-32-N, R-7-W
San Juan County, New Mexico
Latitude 36° 58' 45", Longitude 107° 33' 41"Formation: Blanco Mesa VerdeElevation: 6860' GL

<u>Formation Tops:</u>	<u>Top</u>	<u>Bottom</u>	<u>Contents</u>
Surface	San Jose	2607'	
Ojo Alamo	2607'	2665'	aquifer
Kirtland	2665'	3315'	
Fruitland	3315'	3619'	gas
Pictured Cliffs	3619'	3835'	gas
Lewis	3835'	4615'	
Intermediate TD	4035'		
Chacra	4615'	5438'	gas
Mesa Verde	5438'		gas
Massive Cliff House	5438'	5806'	gas
Menefee	5806'	6044'	gas
Massive Point Lookout	6044'		gas
Total Depth	6600'		

Logging Program:

Openhole Wireline Logging -

Surface to Intermediate TD : DIL/LDT/CNL/NGT/ML/FMS

Intermediate TD to Total Depth : DIL/LDT/CNL/Temp

Mud Logs/Coring/DST -

Mud logs - 4035' to Total Depth

DST - none

Mud Program:

<u>Interval</u>	<u>Type</u>	<u>Weight</u>	<u>Vis.</u>	<u>Fluid Loss</u>
0- 200'	Spud	8.4-8.9	40-50	no control
200-4035'	Weighted	8.4-9.1	30-60	no control
4035-6600'	Gas/Mist	n/a	n/a	n/a

Pit levels will be visually monitored to detect gain or loss of fluid control.

Casing Program:

<u>Hole Size</u>	<u>Depth Interval</u>	<u>Csg. Size</u>	<u>Wt.</u>	<u>Grade</u>
12 1/4"	0' - 200'	9 5/8"	32.3#	H-40
8 3/4"	0' - 4035'	7"	20.0#	K-55
	7" stage tool @ 2800'			
6 1/4"	3885' - 6600'	4 1/2"	10.5#	K-55

Tubing Program:

0' - 6600'	2 3/8"	4.7#	J-55
------------	--------	------	------

RECEIVED
BLM

93 JUL -9 PM 12:07

070 FARMINGTON, NM

