



STATE OF NEW MEXICO  
ENERGY, MINERALS AND NATURAL RESOURCES DEPARTMENT  
OIL CONSERVATION DIVISION  
2040 S. PACHECO  
SANTA FE, NEW MEXICO 87505  
(505) 827-7131

June 1, 1995

Northwest Pipeline Corporation  
c/o Walsh Engineering & Production Corp.  
7415 East Main  
Farmington, New Mexico 87402

Attention: Paul C. Thompson, P.E.

RECEIVED  
JUN - 5 1995  
OIL CON. DIV.  
DIST. 3

*Administrative Order NSL-3537*

Dear Mr. Thompson:

Reference is made to your application dated April 4, 1995 on behalf of the operator, Northwest Pipeline Corporation, for a non-standard gas well location in the Blanco-Mesaverde Pool for your proposed Rosa Unit Well No. 151 to be drilled 1150 feet from the North line and 2205 feet from the West line (Unit C) of Section 33, Township 32 North, Range 6 West, NMPM, San Juan County, New Mexico. The W/2 of said Section 33 shall be dedicated to the well forming a standard 320-acre gas spacing and proration unit for said pool.

By the authority granted me under the provisions of Rule 2(c) of the "Special Rules and Regulations for the Blanco-Mesaverde Pool", as promulgated by Division Order No. R-8170, as amended, the above-described unorthodox gas well location is hereby approved.

Sincerely,

William J. LeMay  
Director

WJL/MES/kv

cc: Oil Conservation Division - Aztec ✓  
U. S. Bureau of Land Management - Farmington

**Ernie Busch**

---

From: Ernie Busch  
To: Mike Stogner  
Subject: WALSH ENG & PROD CORP. (NSL)  
Date: Tuesday, May 23, 1995 10:58AM  
Priority: High

ROSA UNIT #151  
C-33-32N-06W  
1150' FNL ; 2205' FWL  
RECOMMEND: APPROVAL

NSL-3537

1. *Introduction*

\_\_\_\_\_

**WALSH**

ENGINEERING &amp; PRODUCTION CORP.

Petroleum Engineering Consulting  
Lease Management  
Contract Pumping7415 East Main  
Farmington, New Mexico 87402  
(505) 327-4892

April 4, 1995

Mr. William J. LeMay  
New Mexico Oil Conservation Division  
P.O. Box 2088  
Santa Fe, NM 87504-2088

Re: Non-Standard Location  
Northwest Pipeline Corporation  
Rosa Unit #151  
1150' FNL, 2205' FWL  
Section 33, T32N R6W  
San Juan County, NM  
Blanco Mesa Verde

**RECEIVED**  
MAY 22 1995  
**OIL CON. DIV.**  
DIST. 3

Dear Mr. LeMay,

This is a request on behalf of Northwest Pipeline Corporation for administrative approval for a non-standard gas location in the Blanco Mesa Verde pool for the referenced well. The well has been located to avoid archaeological sites.

As you can see from the attached topographical map, the north half of section 33 is a very steep hillside. The rest of the quarter section is in an area of extensive archaeological activity. Cultural Resources Management Consultants, Inc. surveyed the area and found numerous sites in this quarter section. The attached map, prepared by CRMC outlines the site boundaries. The proposed location has been located adjacent to an existing road and overhead power line in an area that is free of archaeological sites.

The proposed spacing unit is the east half of Section 33, T32N, R6W, which is a standard 320 acre subdivision. As the Unit Operator of the Rosa Unit, Northwest Pipeline is the only offset operator. Attached is a plat indicating the well location and proposed spacing unit.



Thank you for your consideration and approval of this application. If you have any questions please do not hesitate to call upon me.

Sincerely,

A handwritten signature in cursive script that reads "Paul C. Thompson".

Paul C. Thompson, P.E.  
President, Walsh Engineering

cc: Mark McCallister, WPC  
NMOCD Aztec NM  
BLM Farmington NM  
Kathleen Reid, CRMC

District I  
PO Box 1980, Hobbs, NM 88241-1980  
District II  
PO Drawer DD, Artesia, NM 88211-0719  
District III  
1000 Rio Brazos Rd., Aztec, NM 87410  
District IV  
PO Box 2088, Santa Fe, NM 87504-2088

State of New Mexico  
Energy, Minerals & Natural Resources Department

OIL CONSERVATION DIVISION  
PO Box 2088  
Santa Fe, NM 87504-2088

Form C-102  
Revised February 21, 1994  
Instructions on back  
Submit to Appropriate District Office  
State Lease - 4 Copies  
Fee Lease - 3 Copies

☐ AMENDED REPORT

WELL LOCATION AND ACREAGE DEDICATION PLAT

1 APT Number		2 Pool Code 72319		3 Pool Name BLANCO MESA VERDE	
4 Property Code 008480		5 Property Name Rosa Unit			6 Well Number 151
7 OGRID No. 16189		8 Operator Name Northwest Pipeline Production			9 Elevation 6458'

10 Surface Location

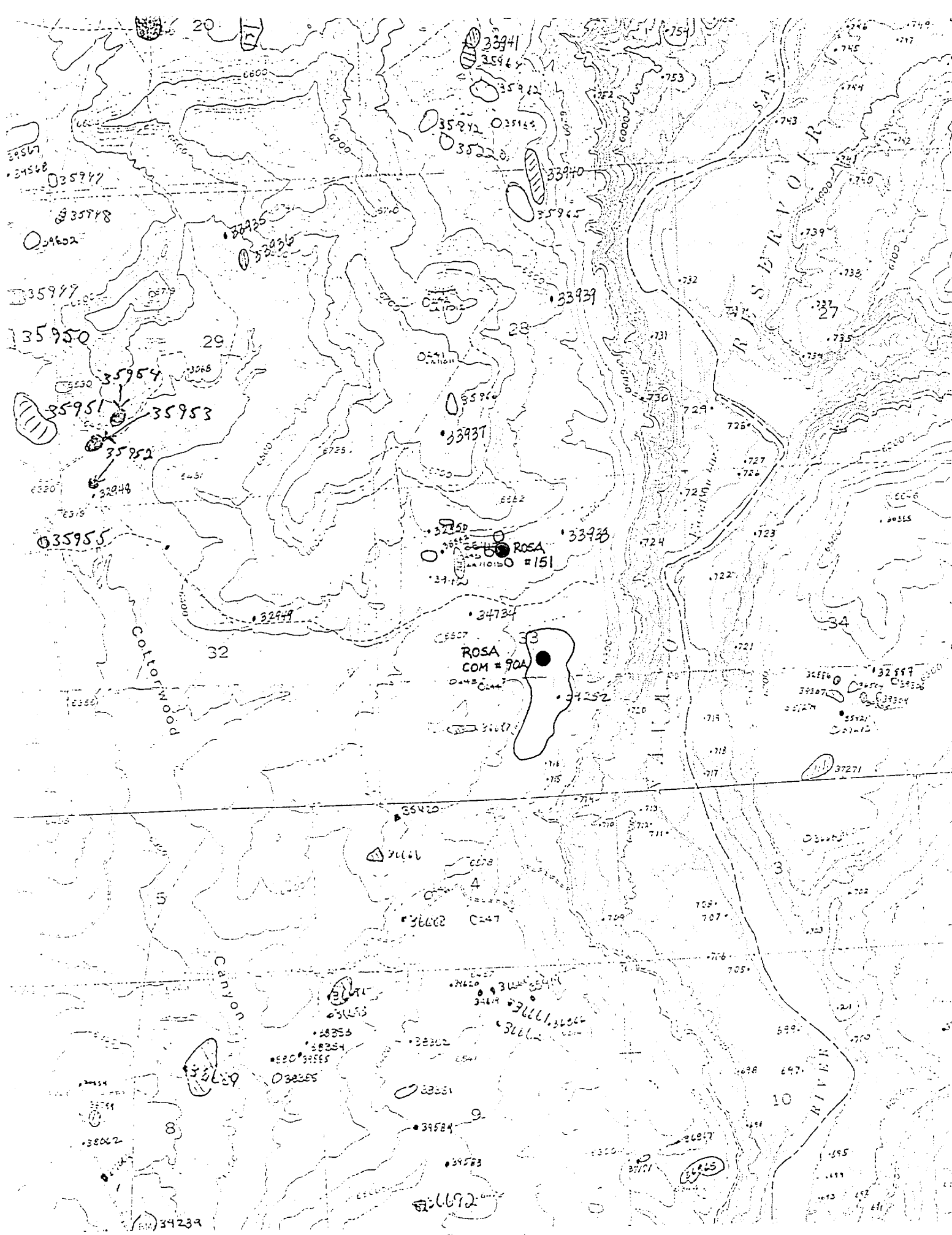
UL or lot no. C	Section 33	Township 32 N	Range 6 W	Lot Idn	Feet from the 1150	North/South line North	Feet from the 2205	East/West line West	County S.J.
--------------------	---------------	------------------	--------------	---------	-----------------------	---------------------------	-----------------------	------------------------	----------------

11 Bottom Hole Location If Different From Surface

UL or lot no.	Section	Township	Range	Lot Idn	Feet from the	North/South line	Feet from the	East/West line	County
12 Dedicated Acres 320		13 Joint or Infill		14 Consolidation Code U		15 Order No.			

NO ALLOWABLE WILL BE ASSIGNED TO THIS COMPLETION UNTIL ALL INTERESTS HAVE BEEN CONSOLIDATED  
OR A NON-STANDARD UNIT HAS BEEN APPROVED BY THE DIVISION

16		5329.50'		17 OPERATOR CERTIFICATION	
2205'		1150'		I hereby certify that the information contained herein is true and complete to the best of my knowledge and belief	
2620.20'		33		Signature Paul C. Thompson	
2654.54'		RECEIVED		Paul C. Thompson, P.E. (AGENT)	
		MAY 22 1995		Printed Name President	
		OIL CON. DIV.		Walsh Engr. & Prod. Corp.	
		DIST. 3		Title 3/31/95	
		2630.76'		Date	
		2763.42'		18 SURVEYOR CERTIFICATION	
				I hereby certify that the well location shown on this plat was plotted from field notes of actual surveys made by me or under my supervision, and that the same is true and correct to the best of my belief.	
				3-18-95	
				Date of Survey	
				Signature and Seal of Professional Surveyor	
				Certificate Number	







**WALSH**

ENGINEERING &amp; PRODUCTION CORP.

Petroleum Engineering Consulting  
Lease Management  
Contract Pumping7415 East Main  
Farmington, New Mexico 87402  
(505) 327-4892

April 4, 1995

Mr. William J. LeMay  
New Mexico Oil Conservation Division  
P.O. Box 2088  
Santa Fe, NM 87504-2088

Re: Non-Standard Location  
Northwest Pipeline Corporation  
Rosa Unit #151  
1150' FNL, 2205' FWL  
Section 33, T32N R6W  
San Juan County, NM  
Blanco Mesa Verde

**RECEIVED**  
MAY 22 1995  
**OIL CON. DIV.**  
**DIST. 3**

Dear Mr. LeMay,

This is a request on behalf of Northwest Pipeline Corporation for administrative approval for a non-standard gas location in the Blanco Mesa Verde pool for the referenced well. The well has been located to avoid archaeological sites.

As you can see from the attached topographical map, the north half of section 33 is a very steep hillside. The rest of the quarter section is in an area of extensive archaeological activity. Cultural Resources Management Consultants, Inc. surveyed the area and found numerous sites in this quarter section. The attached map, prepared by CRMC outlines the site boundaries. The proposed location has been located adjacent to an existing road and overhead power line in an area that is free of archaeological sites.

The proposed spacing unit is the east half of Section 33, T32N, R6W, which is a standard 320 acre subdivision. As the Unit Operator of the Rosa Unit, Northwest Pipeline is the only offset operator. Attached is a plat indicating the well location and proposed spacing unit.



Thank you for your consideration and approval of this application. If you have any questions please do not hesitate to call upon me.

Sincerely,

A handwritten signature in black ink that reads "Paul C. Thompson". The signature is written in a cursive, flowing style with a prominent initial 'P'.

Paul C. Thompson, P.E.  
President, Walsh Engineering

cc: Mark McCallister, WPC  
NMOCD Aztec NM  
BLM Farmington NM  
Kathleen Reid, CRMC

District I  
PO Box 1980, Hobbs, NM 88241-1980  
District II  
PO Drawer DD, Artesia, NM 88211-0719  
District III  
1000 Rio Brazos Rd., Aztec, NM 87410  
District IV  
PO Box 2088, Santa Fe, NM 87504-2088

State of New Mexico  
Energy, Minerals & Natural Resources Department

OIL CONSERVATION DIVISION  
PO Box 2088  
Santa Fe, NM 87504-2088

Form C-102  
Revised February 21, 1994  
Instructions on back  
Submit to Appropriate District Office  
State Lease - 4 Copies  
Fee Lease - 3 Copies

☐ AMENDED REPORT

WELL LOCATION AND ACREAGE DEDICATION PLAT

<sup>1</sup> API Number	<sup>1</sup> Pool Code 72319	<sup>1</sup> Pool Name BLANCO MESA VERDE
<sup>4</sup> Property Code 008480	<sup>1</sup> Property Name Rosa Unit	<sup>1</sup> Well Number 151
<sup>1</sup> OGRID No. 16189	<sup>1</sup> Operator Name Northwest Pipeline Production	<sup>1</sup> Elevation 6458'

<sup>10</sup> Surface Location

UL or lot no. C	Section 33	Township 32 N	Range 6 W	Lot Idn	Feet from the 1150	North/South line North	Feet from the 2205	East/West line West	County S.J.
--------------------	---------------	------------------	--------------	---------	-----------------------	---------------------------	-----------------------	------------------------	----------------

<sup>11</sup> Bottom Hole Location If Different From Surface

UL or lot no.	Section	Township	Range	Lot Idn	Feet from the	North/South line	Feet from the	East/West line	County
---------------	---------	----------	-------	---------	---------------	------------------	---------------	----------------	--------

<sup>12</sup> Dedicated Acres 320	<sup>13</sup> Joint or Infill	<sup>14</sup> Consolidation Code U	<sup>15</sup> Order No.
--------------------------------------	-------------------------------	---------------------------------------	-------------------------

NO ALLOWABLE WILL BE ASSIGNED TO THIS COMPLETION UNTIL ALL INTERESTS HAVE BEEN CONSOLIDATED  
OR A NON-STANDARD UNIT HAS BEEN APPROVED BY THE DIVISION

16	5329.50'		<sup>17</sup> OPERATOR CERTIFICATION I hereby certify that the information contained herein is true and complete to the best of my knowledge and belief  Paul C. Thompson Signature Paul C. Thompson, P.E. (AGENT) Printed Name President Walsh Engr. & Prod. Corp. Title 3/31/95 Date
2205'	1150'		
2620.20'		RECEIVED MAY 22 1995 OIL CON. DIV. DIST. 3	
2654.54'		33	
2630.76'		2763.42'	<sup>18</sup> SURVEYOR CERTIFICATION I hereby certify that the well location shown on this plat was plotted from field notes of actual surveys made by me or under my supervision, and that the same is true and correct to the best of my belief. 3-18-95 Date of Survey NEALE C. EDWARDS Signature and Professional Seal 0857 Certificate Number

