


UNITED STATES
DEPARTMENT OF THE INTERIOR
BUREAU OF LAND MANAGEMENT

APPLICATION FOR PERMIT TO DRILL, DEEPEN, OR PLUG BACK

1a. Type of Work DRILL	5. Lease Number SF-078389 Unit Reporting Number
1b. Type of Well GAS	6. If Indian, All. or Tribe
2. Operator MERIDIAN OIL 14538	7. Unit Agreement Name
3. Address & Phone No. of Operator PO Box 4289, Farmington, NM 87499 (505) 326-9700	8. Farm or Lease Name 7274 Lucerne A 9. Well Number 100
4. Location of Well 940' FSL, 790' FWL Latitude 36° 55' 22", Longitude 107° 52' 28"	10. Field, Pool, Wildcat 74500 Cedar Hill Basal Ft Coal 11. Sec., Twn, Rge, Mer. (NMPM) M Sec 3, T-31-N, R-10-W API # 30-045-29303
14. Distance in Miles from Nearest Town 6 miles to Aztec, NM	12. County San Juan 13. State NM
15. Distance from Proposed Location to Nearest Property or Lease Line 790'	17. Acres Assigned to Well S/2 308.84
16. Acres in Lease	
18. Distance from Proposed Location to Nearest Well, Drig, Compl, or Applied for on this Lease This action is subject to technical and procedural review pursuant to 43 CFR 3165.3 and appeal pursuant to 43 CFR 3165.4.	20. Rotary or Cable Tools Rotary
19. Proposed Depth 2990'	
21. Elevations (DF, FT, GR, Etc.) 6220' GR	22. Approx. Date Work will Start 4th quarter 1995
23. Proposed Casing and Cementing Program See Operations Plan attached	DRILLING OPERATIONS AUTHORIZED ARE SUBJECT TO COMPLIANCE WITH ATTACHED "GENERAL REQUIREMENTS"
24. Authorized by:  Regional Drilling Engineer	10/24/95 Date

PERMIT NO. _____ APPROVAL DATE _____
APPROVED BY _____ TITLE _____ DATE _____

Archaeological Report #88-SJC-048 submitted by San Juan College Resources Management
NOTE: APD approved for this location 10-19-90; then rescinded
NOTE: This format is issued in lieu of U.S. BLM Form 3160-3

APPROVED
AS AMENDED

NOV 09 1995

DISTRICT MANAGER

NMOCD

District I
PO Box 1988, Hobbs, NM 88241-1988
District II
PO Drawer DD, Artesia, NM 88211-0719
District III
1000 Rio Brazos Rd., Aztec, NM 87410
District IV
PO Box 2088, Santa Fe, NM 87504-2088

State of New Mexico
Energy, Minerals & Natural Resources Department

OIL CONSERVATION DIVISION
PO Box 2088
Santa Fe, NM 87504-2088

Form C-102
Revised February 21, 1994

Instructions on back
Submit to Appropriate District Office
State Lease - 4 Copies
Fee Lease - 3 Copies

☐ AMENDED REPORT

WELL LOCATION AND ACREAGE DEDICATION PLAT

1 API Number 30-045-293a3		2 Pool Code 74500		3 Pool Name Cedar Hill Fruitland Basal Coal	
4 Property Code 7274		5 Property Name Lucerne A			6 Well Number 100
7 OGRID No. 14538		8 Operator Name Meridian Oil Inc.			9 Elevation 6220'

10 Surface Location

UL or lot no.	Section	Township	Range	Lot Idn	Feet from the	North/South line	Feet from the	East/West line	County
M	3	31 N	10 W		940	South	790	West	S.J.

11 Bottom Hole Location If Different From Surface

UL or lot no.	Section	Township	Range	Lot Idn	Feet from the	North/South line	Feet from the	East/West line	County

12 Dedicated Acres 5/308.84	13 Joint or Infill	14 Consolidation Code	15 Order No.
--------------------------------	--------------------	-----------------------	--------------

NO ALLOWABLE WILL BE ASSIGNED TO THIS COMPLETION UNTIL ALL INTERESTS HAVE BEEN CONSOLIDATED
OR A NON-STANDARD UNIT HAS BEEN APPROVED BY THE DIVISION

16				4696.40'				17 OPERATOR CERTIFICATION			
4				7				I hereby certify that the information contained herein is true and complete to the best of my knowledge and belief			
6				5				Signature <i>Peggy Bradford</i>			
8				9				Printed Name Peggy Bradford			
11				10				Regulatory Administrator Title			
12				13				Date 10-24-95			
13				12				18 SURVEYOR CERTIFICATION			
10				11				I hereby certify that the well location shown on this plat was plotted from field notes of actual surveys made by me or under my supervision, and that the same is true and correct to the best of my belief.			
13				12				Date of Survey 10-13-95			
12				13				Signature and Seal of Professional Surveyor NEALE C. EDWARDS 8857			
13				12				Certificate Number 8857			

OPERATIONS PLAN

Well Name: Lucerne A #100
Location: 940' FSL, 790' FWL Section 3, T-31-N, R-10-W
 Latitude 36° 55' 22", Longitude 107° 52' 28"
 San Juan County, NM
Formation: Cedar Hill Basal Fruitland Coal
Elevation: 6220' GL

Formation:	Top	Bottom	Contents
Surface	Nacimiento	1351'	
Ojo Alamo	1351'	1394'	aquifer
Kirtland	1394'	2545'	
Fruitland	2545'	2999'	gas
Fruitland Coal	2988'	2999'	gas
Pictured Cliffs	2999'		
Total Depth	2990'		

Logging Program: Mud logs from 1200' to Total Depth.

Mud Program:

Interval	Type	Weight	Vis.	Fluid Loss
0- 200'	Spud	8.4-8.9	40-50	no control
200-2540'	Non-dispersed	8.4-9.1	30-60	no control
2540-2990'	Formation Water	8.4		no control

Casing Program:

Hole Size	Depth Interval	Csg. Size	Wt.	Grade
12 1/4"	0' - 200'	9 5/8"	32.3#	H-40
8 3/4"	0' - 2540'	7"	20.0#	K-55
6 1/4"	2390' - 2990'	5 1/2"	15.5#	K-55

Tubing Program:

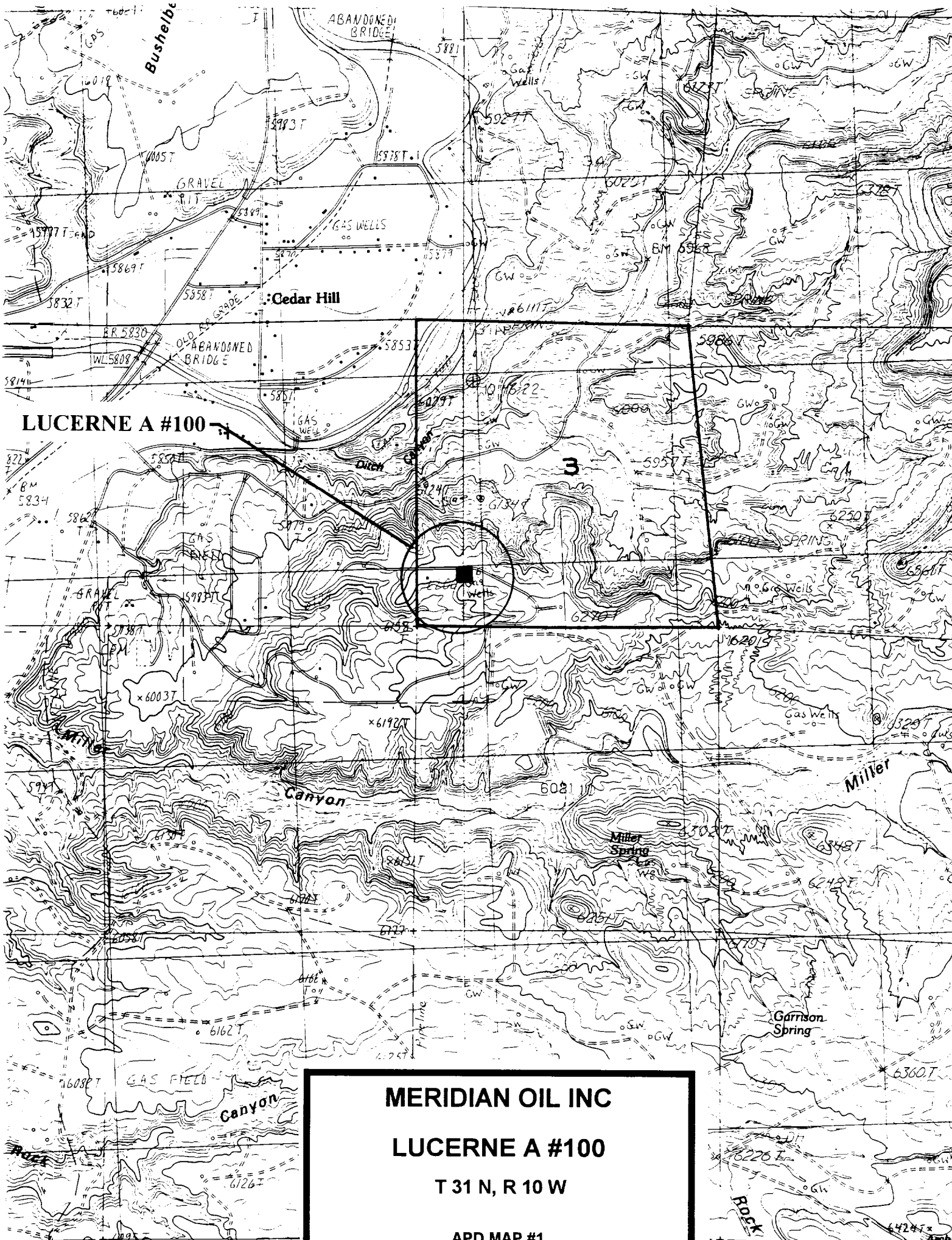
0' - 2990'	2 3/8"	4.7#	J-55
------------	--------	------	------

Float Equipment: 9 5/8" surface casing - saw tooth guide shoe. Centralizers will be run in accordance with Onshore Order #2.

7" intermediate casing - guide shoe and self-fill insert float valve. Three centralizers run every other joint above shoe. Run insert float one joint above guide shoe. Two turbolizing type centralizers - one below and one into the base of the Ojo Alamo @ 1394'. Standard centralizers thereafter every fourth joint up to the base of the surface pipe.

5 1/2" production casing - float shoe on bottom and pre-drilled liner run to the 7" casing with a minimum 50' overlap. Liner hanger is a double slip grip type.

Wellhead Equipment: 9 5/8" x 7" x 2 3/8" x 11" 3000 psi xmas tree assembly.



MERIDIAN OIL INC
LUCERNE A #100
T 31 N, R 10 W
APD MAP #1