

District I  
PO Box 1980, Hobbs, NM 88241-1980  
District II  
PO Drawer DD, Artesia, NM 88211-0719  
District III  
1000 Rio Brazos Rd., Aztec, NM 87410  
District IV  
PO Box 2088, Santa Fe, NM 87504-2088

**OIL CONSERVATION DIVISION**  
**P.O. Box 2088**  
**Santa Fe, NM 87504-2088**

Instructions on back  
Submit to Appropriate District Office  
State Lease - 6 Copies  
Fee Lease - 5 Copies

☐ AMENDED REPORT

**APPLICATION FOR PERMIT TO DRILL, RE-ENTER, DEEPEN, PLUGBACK, OR ADD A ZONE**

<sup>1</sup> Operator name and Address Phillips Petroleum Company 5525 Highway 64, NBU 3004 Farmington, NM 87401		<sup>2</sup> OGRID Number 017654
<sup>4</sup> Property Code 009260		<sup>3</sup> API Number 30-045-29359 ✓
<sup>5</sup> Property Name San Juan 32-7 Unit 3		<sup>6</sup> Well Number #13A ✓

<sup>7</sup> Surface Location

UL or lot no.	Section	Township	Range	Lot. Idn	Feet from the	North/South Line	Feet from the	East/West line	County
E	16	32N	7W		1546'	North	826'	West	San Juan

<sup>8</sup> Proposed Bottom Hole Location If Different From Surface

UL or lot no.	Section	Township	Range	Lot. Idn	Feet from the	North/South Line	Feet from the	East/West line	County

<sup>9</sup> Proposed Pool 1

<sup>10</sup> Proposed Pool 2

Blanco Mesaverde	72319	N/320 ✓
------------------	-------	---------

<sup>11</sup> Work Type Code N	<sup>12</sup> Well Type Code G	<sup>13</sup> Cable/Rotary R	<sup>14</sup> Lease Type Code S E-178-4	<sup>15</sup> Ground Level Elevation 6652' ✓
<sup>16</sup> Multiple N	<sup>17</sup> Proposed Depth @ 6400'	<sup>18</sup> Formations Mesaverde	<sup>19</sup> Contractor Not Contracted	<sup>20</sup> Spud Date April, 1996

<sup>21</sup> Proposed Casing and Cement Program

Hole Size	Casing Size	Casing weight/foot	Setting Depth	Sacks of Cement	Estimated TOC
12-1/4"	9-5/8"	36# J-55	250'	130 sx C1 B	Surface
8-3/4"	7"	20# K-55	4000'	325 sx P07 + 100 sx C1 B	Surface
6-1/4"	4-1/2"	10.5# Liner	3900-6400'	275 sx C1 B	*

<sup>22</sup> Describe the proposed program. If this application is to DEEPEN or PLUG BACK give the data on the present productive zone and proposed new productive zone. Describe the blowout prevention program, if any. Use additional sheets if necessary

\* The 4-1/2" casings' cement is designed to cover openhole section (with 30% excess) and 100' inside the 7" shoe (with 10% excess). See details attached to the cement (see drilling prognosis).

BOP Equipment - See Attached

<sup>23</sup> I hereby certify that the information given above is true and complete to the best of my knowledge and belief.

Signature:

*Ed Hasely*

Printed name: Ed Hasely

Title: Environmental/Regulatory Engineer

Date: 3/25/96

Phone: 505-599-3454

OIL CONSERVATION DIVISION

Approved by:

*Ernie Bush*

3-26-96

Title: DEPUTY OIL & GAS INSPECTOR, DIST. #3

Approval Date: MAR 26 1996

Expiration Date: MAR 26 1997

Conditions of Approval:

Attached ☐

DISTRICT I  
P.O. Box 1980, Hobbs, N.M. 88241-1980

State of New Mexico  
Energy, Minerals & Natural Resources Department

Form C-102

Revised February 21, 1994

Instructions on back

Submit to Appropriate District Office

State Lease - 4 Copies

Fee Lease - 3 Copies

DISTRICT II  
P.O. Drawer DD, Artesia, N.M. 88211-0719

DISTRICT III  
1000 Rio Brazos Rd., Aztec, N.M. 87410

OIL CONSERVATION DIVISION

P.O. Box 2088  
Santa Fe, NM 87504-2088

DISTRICT IV  
PO Box 2088, Santa Fe, NM 87504-2088

☐ AMENDED REPORT

WELL LOCATION AND ACREAGE DEDICATION PLAT

<sup>1</sup> API Number 30-045-29359	<sup>2</sup> Pool Code 72319	<sup>3</sup> Pool Name Blanco Mesaverde
<sup>4</sup> Property Code 009260	<sup>5</sup> Property Name SAN JUAN 32-7	<sup>6</sup> Well Number 13A
<sup>7</sup> GRID No. 017654	<sup>8</sup> Operator Name PHILLIPS PETROLEUM Co.	<sup>9</sup> Elevation 6652

<sup>10</sup> Surface Location

UL or lot no.	Section	Township	Range	Lot Idn	Feet from the	North/South line	Feet from the	East/West line	County
E	16	T-32-N	R-7-W		1546	NORTH	826	WEST	SAN JUAN

<sup>11</sup> Bottom Hole Location If Different From Surface

UL or lot no.	Section	Township	Range	Lot Idn	Feet from the	North/South line	Feet from the	East/West line	County

<sup>12</sup> Dedicated Acres 320 ac.	<sup>13</sup> Joint or Infill N	<sup>14</sup> Consolidation Code J	<sup>15</sup> Order No. n/a
--	------------------------------------	---------------------------------------	--------------------------------

NO ALLOWABLE WILL BE ASSIGNED TO THIS COMPLETION UNTIL ALL INTERESTS HAVE BEEN CONSOLIDATED  
OR A NON-STANDARD UNIT HAS BEEN APPROVED BY THE DIVISION

16 N 00-51 W 1546' 826' E-178-4	S 89-55 W E-503-11	5351.28' <b>RECEIVED</b> MAR 25 1996 OIL CON. DIV. DIST. 3	<b>17 OPERATOR CERTIFICATION</b> I hereby certify that the information contained herein is true and complete to the best of my knowledge and belief.  Signature Ed Hasely Printed Name Envir./Regulatory Eng. Title 3-8-96 Date
			<b>18 SURVEYOR CERTIFICATION</b> I hereby certify that the well location shown on this plat was plotted from field notes of actual surveys made by me or under my supervision, and that the same is true and correct to the best of my belief.  DECEMBER 19, 1995 Date of Survey Signature and Seal of Professional Surveyor 8894 Certificate Number

Fd.Bc.  
S.C.A.D.  
1962

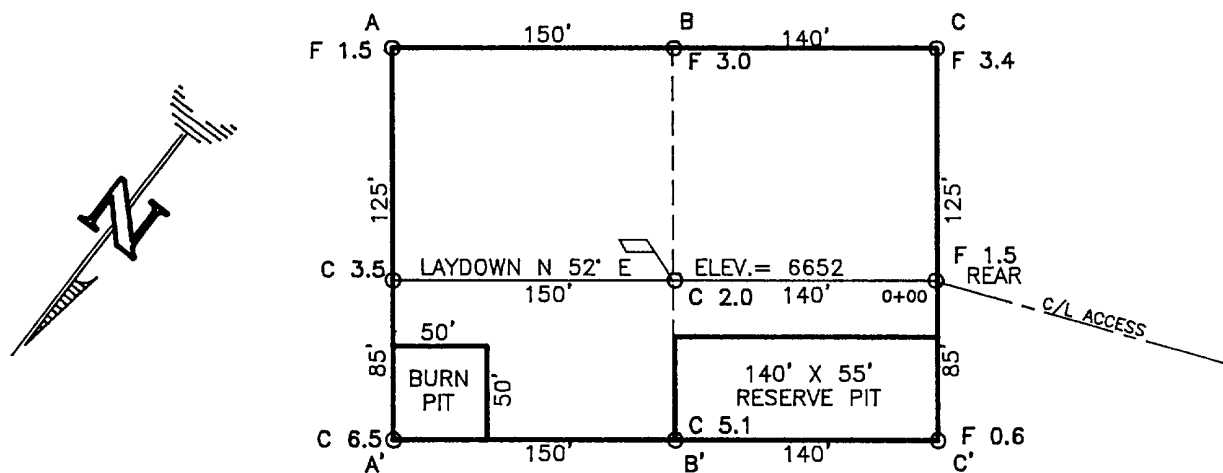
COMPANY: PHILLIPS PETROLEUM Co.

LEASE: SAN JUAN 32-7 No. 13A

FOOTAGE: 1546' FNL, 826' FWL

SEC.: 16, TWN: T-32-N, RNG: R-7-W, NMPPM

ELEVATION: 6652



ELEV.	A-A'	C/L
6680		
6670		
6660		
6650		
6640		
6630		
6620		

ELEV.	B-B'	C/L
6680		
6670		
6660		
6650		
6640		
6630		
6620		

ELEV.	C-C'	C/L
6680		
6670		
6660		
6650		
6640		
6630		
6620		



**Daggett, Inc.**

420 W. Elm Street Ph. (505) 326-1772  
Farmington, New Mexico 87401

**PHILLIPS PETROLEUM Co.**  
**PROPOSED WELL LOCATION & ACCESS ROAD**  
**SAN JUAN 32-7 No. 13A**  
**NW/4 SEC.16, T-32-N, R-7-W, N.M.P.M.,**  
**SAN JUAN COUNTY, NEW MEXICO**  
**1546' FNL, 826' FWL**

