

OIL CONSERVATION DIVISION

P.O. Box 2088

Santa Fe, NM 87504-2088

District I
PO Box 1980, Hobbs, NM 88241-1980
District II
PO Box 1980, Artesia, NM 88211-0719
District III
1000 Rio Brazos Rd., Aztec, NM 87410
District IV
PO Box 2088, Santa Fe, NM 87504-2088

☐ AMENDED REPORT

APPLICATION FOR PERMIT TO DRILL, RE-ENTER, DEEPEN, PLUGBACK, OR ADD A ZONE

1 Operator name and Address Phillips Petroleum Company 5525 Highway 64, NBU 3004 Farmington, NM 87401		2 OGRID Number 017654
4 Property Code 009260		3 API Number 30-045-29362
5 Property Name San Juan 32-7 Unit		6 Well Number #36A

UL or lot no.	Section	Township	Range	Lot. Idn	Feet from the	North/South Line	Feet from the	East/West line	County
K	8	32N	7W		1859' 1910'	South	1890'	West	San Juan

8 Proposed Bottom Hole Location If Different From Surface

UL or lot no.	Section	Township	Range	Lot. Idn	Feet from the	North/South Line	Feet from the	East/West line	County
298.37									
9 Proposed Pool 1 Blanco Mesaverde					10 Proposed Pool 2 72319				

11 Work Type Code N	12 Well Type Code G	13 Cable/Rotary R	14 Lease Type Code P	15 Ground Level Elevation 6230'
16 Multiple N	17 Proposed Depth @ 6000'	18 Formations Mesaverde	19 Contractor Not contracted	20 Spud Date April, 1996

21 Proposed Casing and Cement Program

Hole Size	Casing Size	Casing weight/foot	Setting Depth	Sacks of Cement	Estimated TOC
12-1/4"	9-5/8"	36#, K-55	250'	130 sx C1 B	surface
8-3/4"	7"	20#, K-55	3700'	300sx P07	
				100 sx C1 B	surface
6-1/4"	4-1/2"	10.5# K-55 lin	3600-6000'	265 sx C1 B	*

22 Describe the proposed program. If this application is to DEEPEN or PLUG BACK give the data on the present productive zone and proposed new productive zone. Describe the blowout prevention program, if any. Use additional sheets if necessary

* The 4-1/2" casings' cement is designed to cover openhole section (with 30% excess) and 100' inside the 7" shoe (with 10% excess). See details attached to the cement (see drilling prognosis).

BOP Equipment - See Attached.

23 I hereby certify that the information given above is true and complete to the best of my knowledge and belief.

Signature: *Ed Hasely*

Printed name: Ed Hasely

Title: Environmental/Regulatory Engineer

Date: 3/25/96

Phone: 505-599-3460

OIL CONSERVATION DIVISION

Approved by: *Ernie Busch* 3-29-96

Title: DEPUTY OIL & GAS INSPECTOR, DIST. #3

Approval Date: MAR 29 1996 Expiration Date: MAR 29 1997

Conditions of Approval:

Attached ☐

District I
PO Box 1980, Hobbs, NM 88241-1980
District II
PO Drawer DD, Artesia, NM 88211-0719
District III
1000 Rio Brazos Rd., Aztec, NM 87410
District IV
PO Box 2088, Santa Fe, NM 87504-2088

State of New Mexico
Energy, Minerals & Natural Resources Department

OIL CONSERVATION DIVISION
PO Box 2088
Santa Fe, NM 87504-2088

Form C-102
Revised February 21, 1994
Instructions on back
Submit to Appropriate District Office
State Lease - 4 Copies
Fee Lease - 3 Copies

☐ AMENDED REPORT

WELL LOCATION AND ACREAGE DEDICATION PLAT

1 API Number <u>30-039-29362</u>		1 Pool Code <u>72319</u>		1 Pool Name <u>BLANCO MESA VERDE</u>	
1 Property Code <u>009260</u>		1 Property Name SAN JUAN 32-7			1 Well Number 36A
1 OGRID No. <u>017654</u>		1 Operator Name PHILLIPS PETROLEUM CO.			1 Elevation 6230

10 Surface Location

UL or lot no.	Section	Township	Range	Lot Idn	Feet from the	North/South line	Feet from the	East/West line	County
K	8	T-32-N	R-7-W		1859	SOUTH	1817	WEST	SAN JUAN

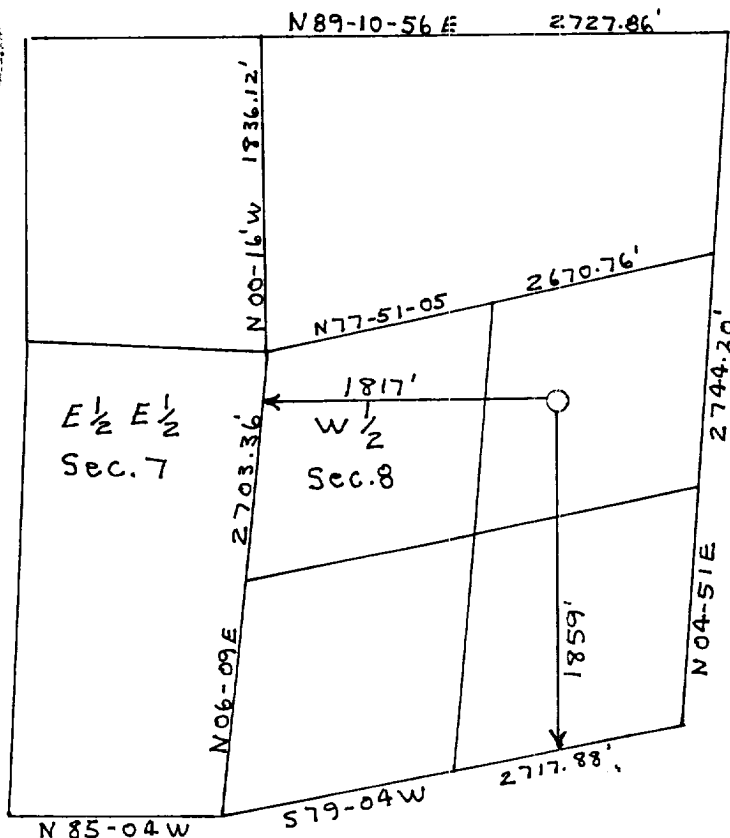
11 Bottom Hole Location If Different From Surface

UL or lot no.	Section	Township	Range	Lot Idn	Feet from the	North/South line	Feet from the	East/West line	County
12 Dedicated Acres <u>29837</u>		13 Joint or Infill <u>Y</u>		14 Consolidation Code <u>U</u>		15 Order No. <u>R-1066</u>			

NO ALLOWABLE WILL BE ASSIGNED TO THIS COMPLETION UNTIL ALL INTERESTS HAVE BEEN CONSOLIDATED
OR A NON-STANDARD UNIT HAS BEEN APPROVED BY THE DIVISION

RECEIVED
MAR 29 1996

OIL CON. DIV.
DIST. 3



17 OPERATOR CERTIFICATION

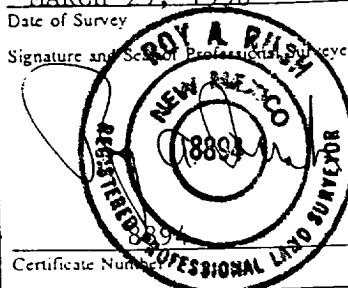
I hereby certify that the information contained herein is true and complete to the best of my knowledge and belief

Ed Hasely
Signature
Ed Hasely
Printed Name
Environmental Eng.
Title
3/29/96
Date

18 SURVEYOR CERTIFICATION

I hereby certify that the well location shown on this plat was plotted from field notes of actual surveys made by me or under my supervision, and that the same is true and correct to the best of my belief.

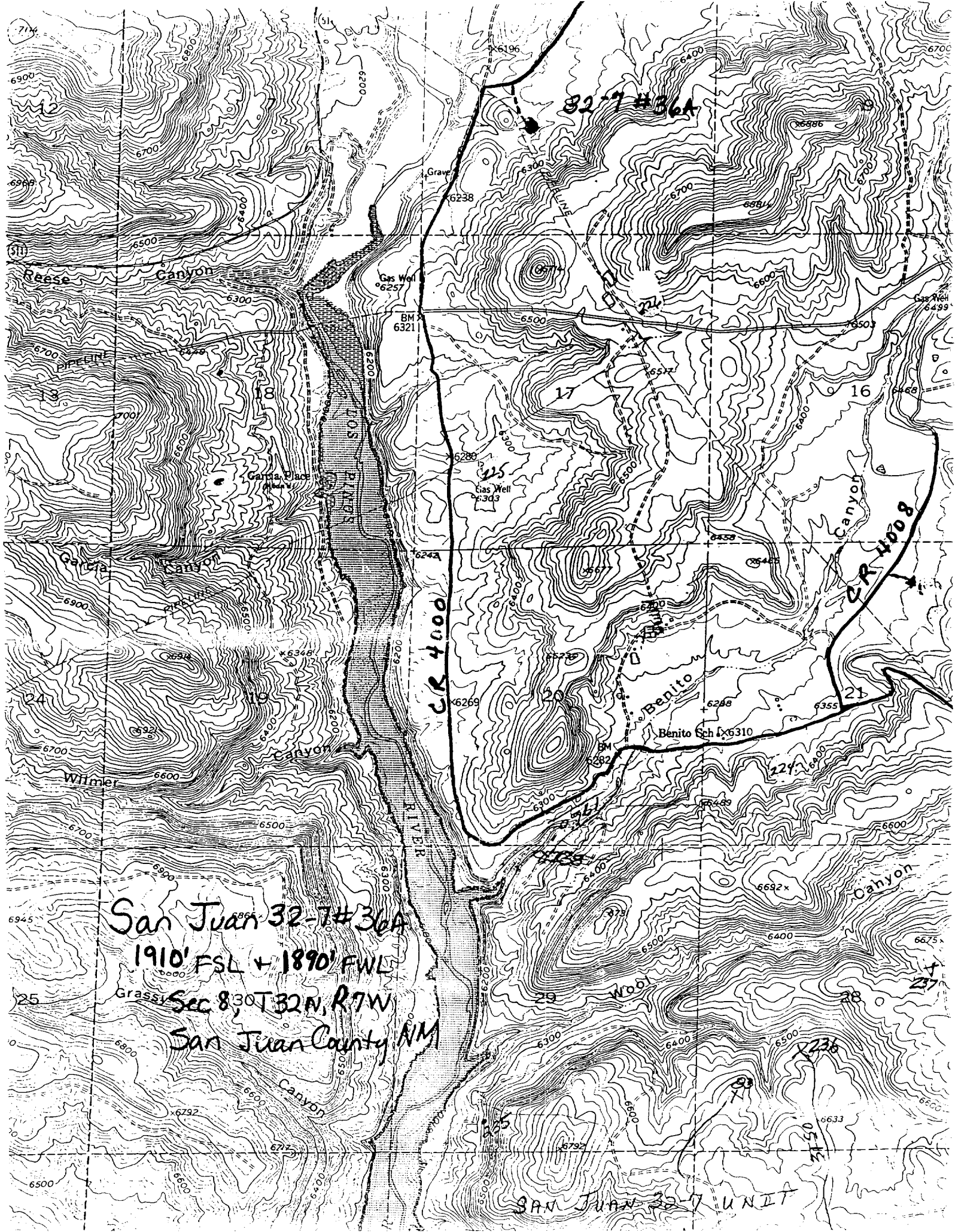
MARCH 29, 1996
Date of Survey
Signature and Seal of Professional Surveyor:



Certificate Number

San Juan 32-7#36A
1910' FSL + 1890' FWL
Grassy Sec 8, 30T32N, R7W
San Juan County NM

SAN JUAN 32-7 UNIT



PHILLIPS PETROLEUM COMPANY

Preliminary 03/18/96

Well Name: San Juan 32-7 #36A

DRILLING PROGNOSIS

1. Location of Proposed Well: 1910' FSL & 1890' FWL, Sec. 8, T-32-N, R-7-W, San Juan County, New Mexico
2. Unprepared Ground Elevation: 6230'
3. The geologic name of the surface formation is San Jose.
4. Type of drilling tools will be rotary.
5. Proposed drilling depth is 6000'.
6. The estimated tops of important geologic markers are as follows:

<u>Ojo Alamo</u>	<u>1950'</u>	<u>Lewis</u>	<u>3400'</u>
<u>Kirtland</u>	<u>2025'</u>	<u>Cliff House</u>	<u>5180'</u>
<u>Fruitland</u>	<u>2800'</u>	<u>Menefee</u>	<u>5250'</u>
<u>Pictured Cliffs</u>	<u>3150'</u>	<u>Pt Lookout</u>	<u>5480'</u>

7. The estimated depths at which anticipated water, oil, gas, or other mineral bearing formations are expected to be encountered are as follow:

Water: Ojo Alamo - 1950'
Gas & Water: Fruitland - 2800'
Gas: Mesaverde - 5180' - 6000'

8. The proposed casing program is as follows:

Surface String 9-5/8", 36#, J-55 @ 250'
Intermediate String 7", 20#, K-55 @ 3700'
Production String 4-1/2", 10.5# Liner 3600' - 6000'
Production Tubing 2-3/8" 4.7# J-55 @ 5300'

9. **Cement Program:**

Surface String 130 sx Cl B + 2% CaCl₂ + .25 lb/sx celloflake

Intermediate String Flush: 10 bbls mud flush, then 10 bbls fresh water.

Lead cmt: 300 sx 35/65 POZ + 2% CaCl₂ + .25 lb/sx celloflake

Tail cmt: 100 sx Class B + 2% CaCl₂ + .25 lb/sx Celloflake

Production String: Flush: 20 bbls mud flush, then 10 bbls fresh water.

Lead = 265 sx Cl B + Fluid Loss

Centralizer Program:

Surface: Centralizer at 10' above shoe. Top of 2nd and 6th joints.

Intermediate: Centralizer at 10' above shoe 2nd Jt.
Top of every other joint until a total of 8 centralizers have been used.

Production: Centralizer at 10' above shoe. Top of 2nd Jt.

10. Production Control Equipment: Schematic diagrams thereof showing sizes, pressure ratings (or) API series are enclosed within the APD packet.
11. Drilling Mud Prognosis: Surface to Bottom of 8-3/4" Hole:
Low solids, non-dispersed, 9.0 ppg+, fresh water base mud.
6-1/4" Hole Section:
Air or Gas Drilled
12. The testing, logging, and coring programs are as follows:
D.S.T.'s or cores: None
Logs: Temperature Survey and GR
Special Tests: None
13. Anticipate no abnormal pressures or temperatures to be encountered or any other potential hazards such as Hydrogen Sulfide Gas. Low risk H₂S equipment will be used.
14. The anticipated starting date will be in the 2nd quarter of 1996 with duration of operations for approximately 30 days thereafter.