

UNITED STATES
DEPARTMENT OF THE INTERIOR
BUREAU OF LAND MANAGEMENT
RECEIVED
BLM MAIL ROOM

APPLICATION FOR PERMIT TO DRILL, DEEPEN, OR PLUG BACK

55 MAY -7 AM 7:57

1a. Type of Work DRILL	5. Lease Number SF-078504 Unit Reporting Number	
1b. Type of Well Pressure Observation Well	6. If Indian, All. or Tribe	
2. Operator MERIDIAN OIL 14538	7. Unit Agreement Name San Juan 32-9 Unit	
3. Address & Phone No. of Operator PO Box 4289, Farmington, NM 87499 (505) 326-9700	8. Farm or Lease Name 19001 San Juan 32-9 Unit POW 9. Well Number 1	
4. Location of Well 1155' FNL, 1720' FWL Latitude 36° 58.5, Longitude 107° 50.2	10. Field, Pool, Wildcat Basin Ft Coal 71629 11. Sec., Twn, Rge, Mer. (NMPM) C Sec 24, T-32-N, R-10-W API # 30-045-29381	
14. Distance in Miles from Nearest Town 4 miles to Cedar Hill	12. County San Juan	13. State NM
15. Distance from Proposed Location to Nearest Property or Lease Line 1155'	17. Acres Assigned to Well POW well	
16. Acres in Lease	18. Distance from Proposed Location to Nearest Well, Drlg, Compl, or Applied for on this Lease 1600'	
19. Proposed Depth 3800'	20. Rotary or Cable Tools Rotary	
21. Elevations (DRL, FNL, GR) 6944' GR	22. Approx. Date Work will Start 2nd quarter 1996	
23. Proposed Casing and Cementing Program See Operations Plan attached	DRILLING OPERATIONS AUTHORIZED ARE SUBJECT TO COMPLIANCE WITH ATTACHED "GENERAL REQUIREMENTS"	
24. Authorized by: <u>[Signature]</u> Regulatory/Compliance Administrator	Date <u>5-6-96</u>	

PERMIT NO. **RECEIVED**
APPROVED BY MAY 20 1996

APPROVAL DATE

TITLE

**APPROVED
AS AMENDED**
DATE MAY 17 1996

OIL CON. DIV.

Archaeological Report to be submitted

Threatened and Endangered Species Report submitted by Ecosphere Environmental dated April 1996

DISTRICT MANAGER
ACCEPTED FOR RECORD
MAY 17 1996
FARMINGTON DISTRICT OFFICE
BY [Signature]

NOTE: This format is issued in lieu of U.S. BLM Form 3160-3

OK
(E)

MMOCO

OIL CONSERVATION DIVISION
PO Box 2088
Santa Fe, NM 87504-2088

2088
JUN -7 AM 7:57

☐ AMENDED REPORT:

WELL LOCATION AND ACREAGE DEDICATION PLAT

API Number 30-045-29381		Pool Code 71629	Pool Name Basin Fruitland Coal	
Property Code 170-01	Property Name San Juan 32-9 Unit Pool			Well Number 1
OGRID No. 14538	Operator Name MERIDIAN OIL INC.			Elevation 6944'

¹⁰ Surface Location

UL or lot no.	Section	Township	Range	Lot Ida	Feet from the	North/South line	Feet from the	East/West line	County
C	24	32 N	10 W		1155	North	1720	West	S.J.

" Bottom Hole Location If Different From Surface

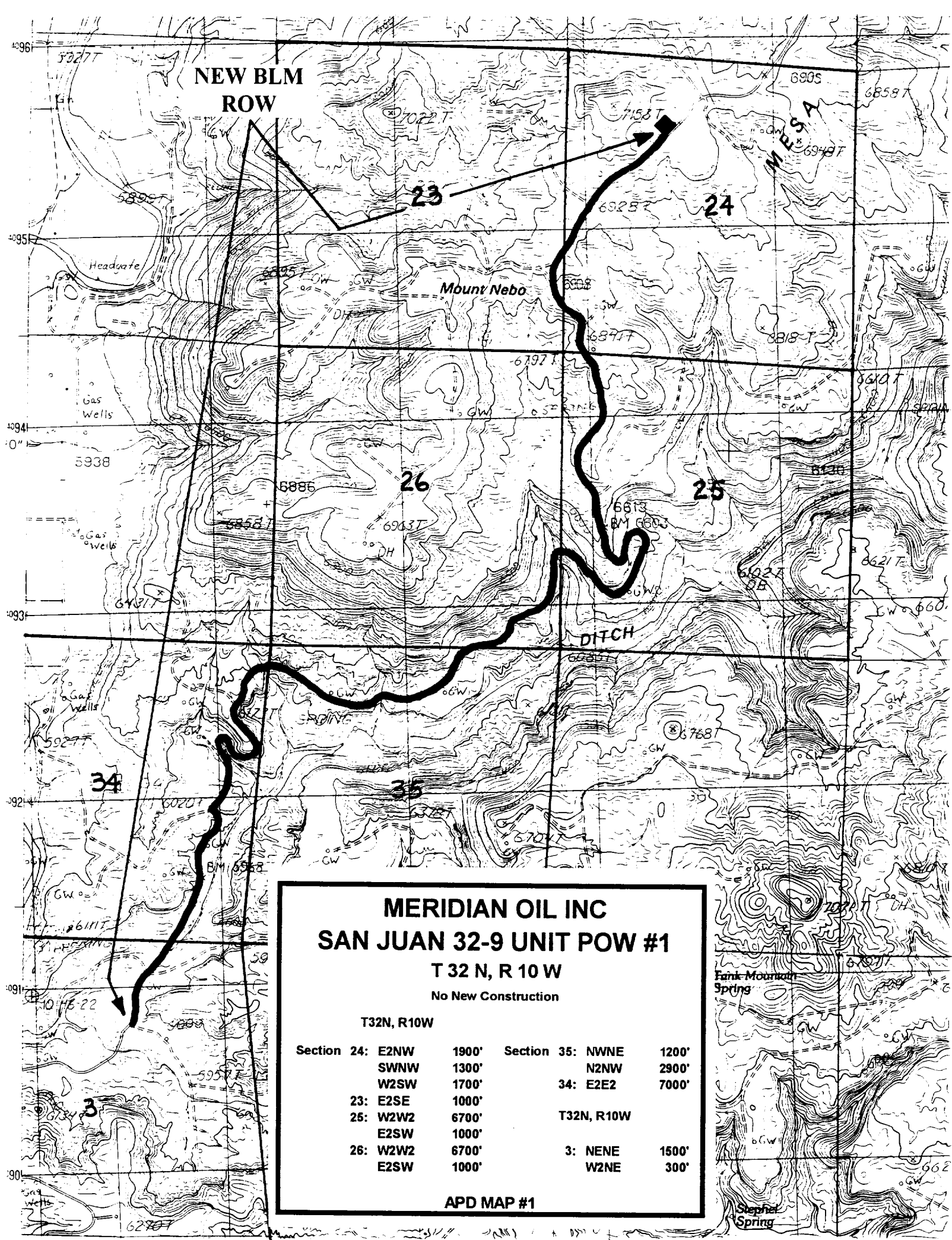
UL or lot no.	Section	Township	Range	Lot Ids	Feet from the	North/South line	Feet from the	East/West line	County
---------------	---------	----------	-------	---------	---------------	------------------	---------------	----------------	--------

¹³ Dedicated Acres	¹³ Joint or Infill	¹⁴ Consolidation Code	¹⁵ Order No.
-------------------------------	-------------------------------	----------------------------------	-------------------------

**NO ALLOWABLE WILL BE ASSIGNED TO THIS COMPLETION UNTIL ALL INTERESTS HAVE BEEN CONSOLIDATED
OR A NON-STANDARD UNIT HAS BEEN APPROVED BY THE DIVISION**

16	4	1155'	5054.28'	3	2	1	17 OPERATOR CERTIFICATION I hereby certify that the information contained herein is true and complete to the best of my knowledge and belief. <i>Peggy Bradfield</i> Signature Peggy Bradfield Printed Name Regulatory Administrator Title 4-10-96 Date
	5	6	7	8	24 NM SF-078504		
	RECEIVED 12 MAY 20 1996 OIL CON. DIV. DIST. 3		10	9			18 SURVEYOR CERTIFICATION I hereby certify that the well location shown on this plan was plotted from field notes of actual surveys made by me or under my supervision, and that the same is true and correct to the best of my belief. 3-7-96 Date of Survey Signature and Seal of Professional Surveyor: <i>HERLE C. EDWARDS</i> NEW JERSEY 8857 6857 Certificate Number
	13	14	15	16			

5005.44



NEW BLM
ROW

23

24

MESA

Mount Nebo

26

25

DITCH

34

35

MERIDIAN OIL INC
SAN JUAN 32-9 UNIT POW #1

T 32 N, R 10 W

No New Construction

T32N, R10W

Section 24:	E2NW	1900'	Section 35:	NWNE	1200'
	SWNW	1300'		N2NW	2900'
	W2SW	1700'	34:	E2E2	7000'
23:	E2SE	1000'			
25:	W2W2	6700'	T32N, R10W		
	E2SW	1000'			
26:	W2W2	6700'	3:	NENE	1500'
	E2SW	1000'		W2NE	300'

APD MAP #1

Fank Mountain
Spring

Stepha
Spring