

UNITED STATES  
DEPARTMENT OF THE INTERIOR

BUREAU OF LAND MANAGEMENT

APPLICATION FOR PERMIT TO DRILL OR DEEPEN

Form approved.  
Budget Bureau No.1004-0136  
Expires: December 31, 1991

1a. TYPE OF WORK  
b. TYPE OF WELL  
OIL WELL ☐ GAS WELL ☒ OTHER ☐  
SINGLE ZONE ☒ MULTIPLE ZONE ☐  
2. NAME OF OPERATOR  
Amoco Production Company  
3. ADDRESS AND TELEPHONE NO.  
P.O. Box 800, Denver, Colorado 80201 (303) 830-4988  
4. LOCATION OF WELL (Report location clearly and in accordance with any State requirements. \*)  
At surface 1610' FNL 1430' FEL Unit G  
At proposed prod. zone  
14. DISTANCE IN MILES AND DIRECTION FROM NEAREST TOWN OR POST OFFICE\*  
11.87 miles to Aztec, New Mexico  
15. DISTANCE FROM PROPOSED\* LOCATION TO NEAREST PROPERTY OR LEASE LINE, FT. (Also to nearest drlg. unit line, if any)  
16. NO. OF ACRES IN LEASE  
1086.55  
17. NO. OF ACRES ASSIGNED TO THIS WELL  
271.94  
18. DISTANCE FROM PROPOSED LOCATION\* TO NEAREST WELL, DRILLING, COMPLETED, OR APPLIED FOR, ON THIS LEASE, FT.  
19. PROPOSED DEPTH  
6058'  
20. ROTARY OR CABLE TOOLS  
Rotary  
21. ELEVATIONS (Show whether DF, RT, GR., etc.)  
6571' GR  
22. APPROX. DATE WORK WILL START\*  
06-01-96

5. LEASE DESIGNATION AND SERIAL NO.  
NM-013688  
6. IF INDIAN, ALLOTTEE OR TRIBE NAME  
7. UNIT AGREEMENT NAME  
8. FARM OR LEASE NAME, WELL NO.  
Atlantic LS 2R  
9. API WELL NO.  
30-045-29384  
10. FIELD AND POOL, OR WILDCAT  
Blanco Mesaverde  
11. SEC., T., R., M., OR BLK. AND SURVEY OR AREA  
Section 24  
Township 31N Range 10W  
12. COUNTY OR PARISH  
San Juan  
13. STATE  
New Mexico

PROPOSED CASING AND CEMENTING PROGRAM				
SIZE OF HOLE	GRADE, SIZE OF CASING	WEIGHT PER FOOT	SETTING DEPTH	QUANTITY OF CEMENT
12.25"	9.625" J-55	36#	250'	106 cu.ft. Std cmt, circ to surface
8.75"	7.000" J-55	20#	3568'	738cuft Std, tail w/ 129cuft Std, circ to surf.
6.25"	4.500" J-55	11.6#	6058'	370 cu.ft. Std cmt, TOC 3268'

Notice of Staking submitted on 5/6/96 as the Atlantic LS 2R.

LEASE DESCRIPTION:

T31N R10W: Sec. 24, Lots 1 - 14

T31N R10W: Sec. 25, Lots 1 - 5, NW/4NW/4, S/2NW/4, S/2

This action is subject to technical and procedural review pursuant to 43 CFR 3165.3 and appeal pursuant to 43 CFR 5165.4.

DRILLING OPERATIONS AUTHORIZED ARE SUBJECT TO COMPLIANCE WITH ATTACHED "GENERAL REQUIREMENTS"  
RECEIVED  
JUN 20 PM 1:48  
MAIL ROOM

RECEIVED  
JUN 10 1996  
OIL CON. DIV.  
DIST. 3

IN ABOVE SPACE DESCRIBE PROPOSED PROGRAM: If proposal is to deepen, give data on present productive zone and proposed new productive zone. If proposal is to drill or deepen directionally, give pertinent data on subsurface locations and measured and true vertical depths. Give blowout preventer program, if any.

24.  
SIGNED Patty Haefele TITLE Staff Assistant DATE 05-06-1996  
(This space for Federal or State office use)

PERMIT NO. \_\_\_\_\_ APPROVAL DATE \_\_\_\_\_  
Application approval does not warrant or certify that the applicant holds legal or equitable title to those rights in the subject lease which would entitle the applicant to conduct operations thereunder.  
CONDITIONS OF APPROVAL, IF ANY:

APPROVED BY \_\_\_\_\_ TITLE NMOCD DATE JUN 26 1996  
DISTRICT MANAGER

\*See Instructions On Reverse Side

Title 18 U.S.C. Section 1001, makes it a crime for any person knowingly and willfully to make to any department or agency of the United States any false, fictitious or fraudulent statements or representations as to any matter within its jurisdiction.

District I  
PO Box 1980, Hobbs, NM 88241-1980  
District II  
PO Drawer DD, Artesia, NM 88211-0719  
District III  
1000 Rio Brazos Rd., Aztec, NM 87410  
District IV  
PO Box 2088, Santa Fe, NM 87504-2088

State of New Mexico  
Energy, Minerals & Natural Resources Department

OIL CONSERVATION DIVISION

PO Box 2088  
Santa Fe, NM 87504-2088

Form C-102

Revised February 21, 1994

Instructions on back

RECEIVED  
MAIL ROOM

56 MAY 20 PM 1:48

Submit to Appropriate District Office

State Lease - 4 Copies

Fee Lease - 3 Copies

070 FARRINGTON, NM ☐ AMENDED REPORT

WELL LOCATION AND ACREAGE DEDICATION PLAT

API Number <u>30-045-29384</u>		Pool Code 72319	Pool Name Blanco Mesayerde
Property Code 000278	Property Name ATLANTIC LS		Well Number # 2R
OGRID No. 000778	Operator Name AMOCO PRODUCTION COMPANY		Elevation 6571

<sup>10</sup> Surface Location

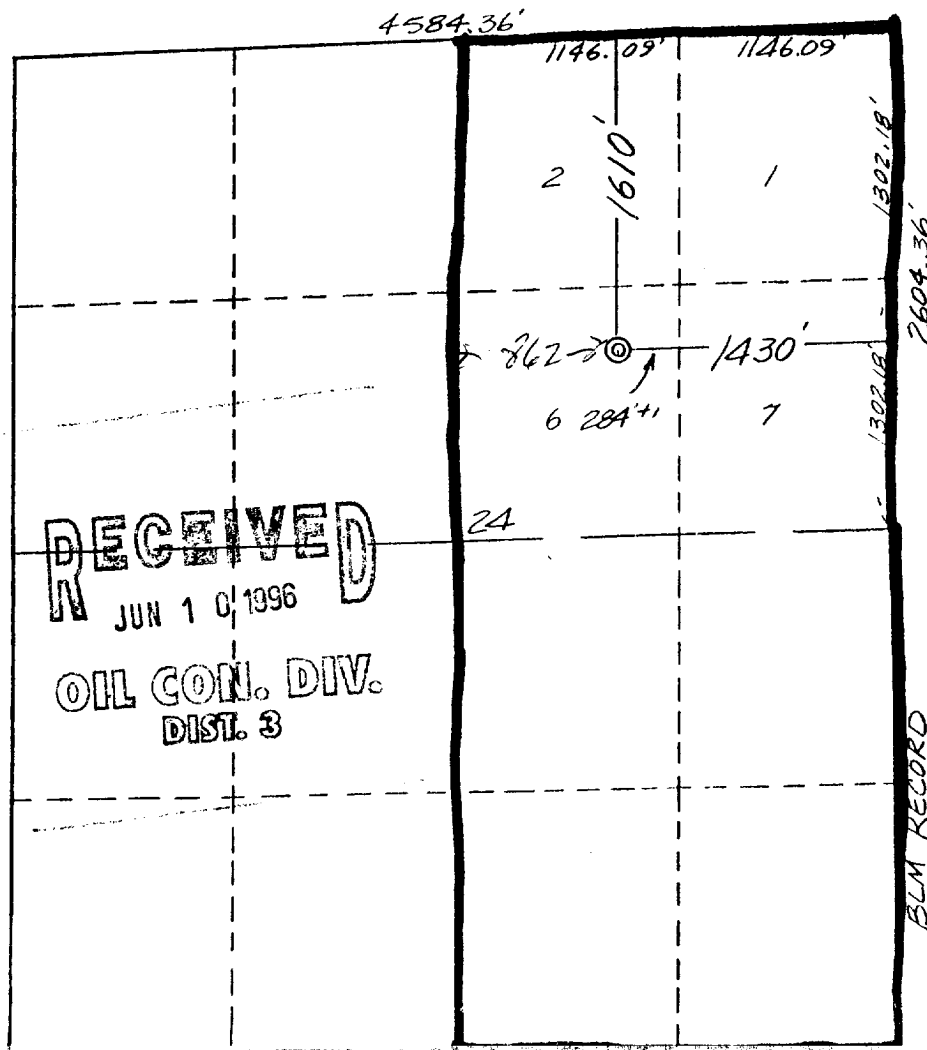
UL or lot no. Lot 6 <u>G</u>	Section 24	Township 31 N	Range 10 W	Lot Idn	Feet from the 1610	North/South line NORTH	Feet from the 1430	East/West line EAST	County SAN JUAN
---------------------------------	---------------	------------------	---------------	---------	-----------------------	---------------------------	-----------------------	------------------------	--------------------

<sup>11</sup> Bottom Hole Location If Different From Surface

UL or lot no.	Section	Township	Range	Lot Idn	Feet from the	North/South line	Feet from the	East/West line	County
---------------	---------	----------	-------	---------	---------------	------------------	---------------	----------------	--------

<sup>12</sup> Dedicated Acres 271.94	<sup>13</sup> Joint or Infill	<sup>14</sup> Consolidation Code	<sup>15</sup> Order No.
---	-------------------------------	----------------------------------	-------------------------

NO ALLOWABLE WILL BE ASSIGNED TO THIS COMPLETION UNTIL ALL INTERESTS HAVE BEEN CONSOLIDATED  
OR A NON-STANDARD UNIT HAS BEEN APPROVED BY THE DIVISION



<sup>17</sup> OPERATOR CERTIFICATION

I hereby certify that the information contained herein is true and complete to the best of my knowledge and belief

Patty Haeefe  
Signature  
Patty Haeefe  
Printed Name  
Staff Assistant  
Title  
5/6/96  
Date

<sup>18</sup> SURVEYOR CERTIFICATION

I hereby certify that the well location shown on this plat was plotted from field notes of actual surveys made by me or under my supervision, and that the same is true and correct to the best of my belief.

April 25, 1996  
Date of Survey  
Signature and Seal of Professional Surveyor:  
GARY D. VAAN  
NEW MEXICO  
REGISTERED PROFESSIONAL LAND SURVEYOR  
7016  
Certificate Number

**AMOCO PRODUCTION COMPANY**  
**DRILLING and COMPLETION PROGRAM**

Lease/Well#: Atlantic LS #2R  
 County: San Juan New Mexico  
 Former name:

Surface Location: 1610' FNL & 1430' FEL of Section 24, T31N, R10W  
 Field:

OBJECTIVE: Mesa Verde Gas

METHOD OF DRILLING		APPROXIMATE DEPTHS OF GEOLOGICAL MARKER	
TYPE OF TOOLS	DEPTH OF DRILLING	Actual GL-----Estimated KB	
Rotary	Ground Level - TD		

LOGGING PROGRAM	DEPTH	Marker	Depth (ft.)	SS Elev. (ft.)
TYPE		Ojo Alamo	2,313	4,263
		Kirtland	2,400	4,176
		Fruitland Coal	3,032	3,544
		PC *	3,360	3,216
		Lewis Shale	3,418	3,158
		Cliff House	5,119	1,457
		Menefee Shale *	5,253	1,323
		Point Lookout *	5,608	968
		Mancos	6,008	568
		Gallup		
				Greenhorn
		Graneros		
		Dakota		
TOTAL DEPTH			6,058	518

Logging Program Remarks:

\* Possible pay  
 \*\* Probable completion  
 Ojo Alamo is possible usable water

SPECIAL TESTS		DRILL CUTTING SAMPLES		DRILLING TIME	
TYPE	DEPTH INTERVAL, ETC	FREQUENCY	DEPTH	FREQUENCY	DEPTH
None				Geologist	Int - TD

Remarks:

Mud Logging Program: None

Coring Program: None

MUD PROGRAM:

Approx. Interval	Type Mud	Weight, #/gal	Vis, sec/qt	W/L, cc's/30 min.
0' - 3568' (1) (2)	Water	8.6 - 9.2	Sufficient to clean hole	N/C
3568' - TD (3)	Air/Mist			

Mud Program Remarks:

1 - The hole will require sweeps to keep unloaded while fresh water drilling. Let hole conditions dictate frequency.  
 2 - If required to mud up, mud up with a LSND designed for good hole cleaning.  
 3 - If required to mud up, mud up with a LSND designed for good hole cleaning, API WL between 10-15.

CASING PROGRAM:

Casing String	Estimated Depth	Casing Size	Hole Size	Landing Point, Cement, Etc
Conductor	250	9-5/8"		
Surface	3,568	7"	8.75"	1, 2
Production	6,058	4-1/2"	6.25"	3

Casing Program Remarks:

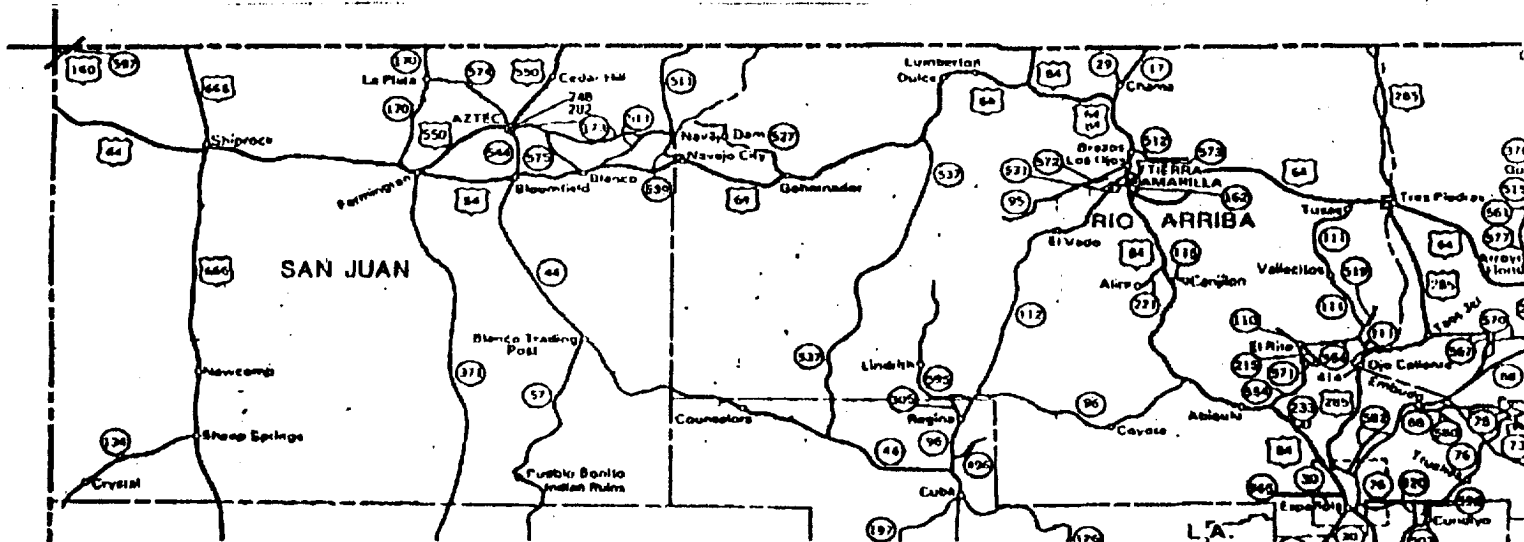
1 - Circulate cement to surface.  
 2 - Set casing a minimum of 150' into the Lewis Shale  
 3 - Circulate cement a minimum of 300' into the surface casing overlap.

GENERAL REMARKS:

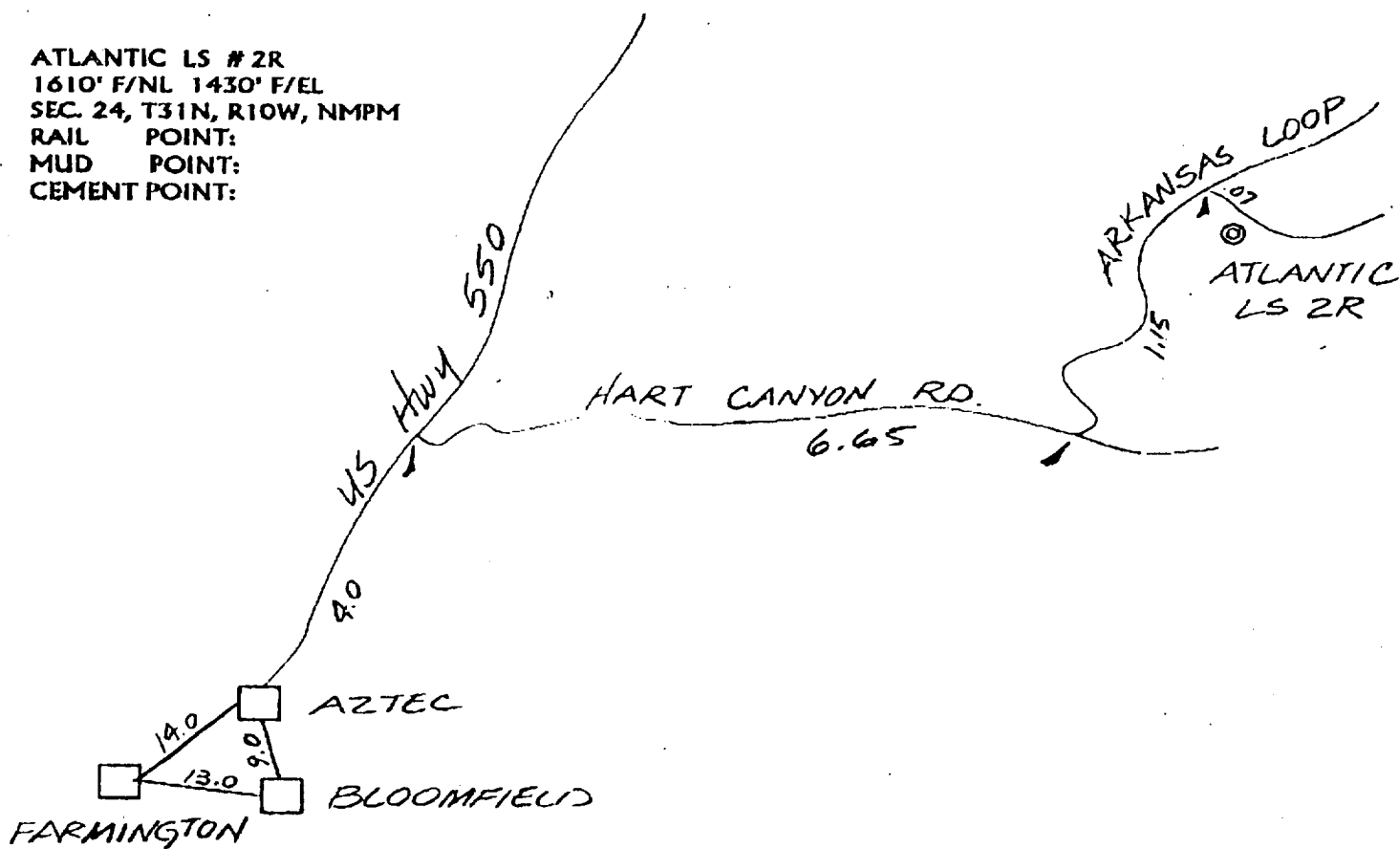
Business Unit Engineering staff to design completion program.

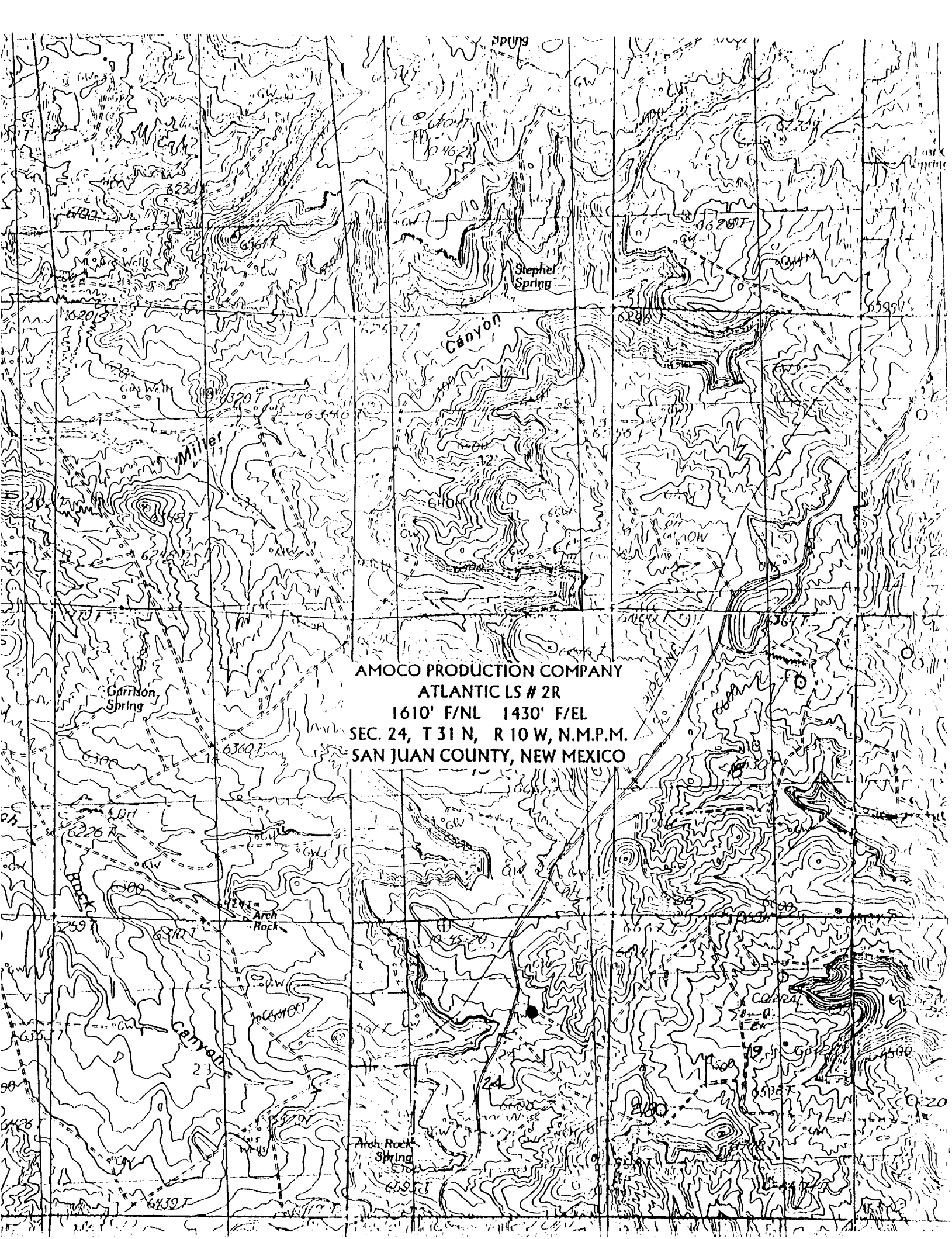
Form 46 Reviewed by:	Logging program reviewed by:
PREPARED BY: Webb/Ovitz	APPROVED:
Form 46 7-84bw	For Production Dept
Date: 4/22/96	Rev. Date: 5/6/96 9:03

APPROVED:	APPROVED:
For Exploration Dept	File: atlant2r.xlv



ATLANTIC LS #2R  
 1610' F/NL 1430' F/EL  
 SEC. 24, T31N, R10W, NMPM  
 RAIL POINT:  
 MUD POINT:  
 CEMENT POINT:





AMOCO PRODUCTION COMPANY  
ATLANTIC LS # 2R  
1610' F/NL 1430' F/EL  
SEC. 24, T 31 N, R 10 W, N.M.P.M.  
SAN JUAN COUNTY, NEW MEXICO