

**UNITED STATES
DEPARTMENT OF THE INTERIOR
BUREAU OF LAND MANAGEMENT**

APPLICATION FOR PERMIT TO DRILL OR DEEPEN

1a. TYPE OF WORK

DRILL ☒DEEPEN ☐

b. TYPE OF WELL

OIL
WELL ☐GAS
WELL ☒

OTHER

SINGLE
ZONE ☒MULTIPLE
ZONE ☐

2. NAME OF OPERATOR

McELVAIN OIL & GAS PROPERTIES, INC.

3. ADDRESS AND TELEPHONE NO.

P.O. Box 2148 Santa Fe, New Mexico 87504 (505) 982-1935

4. LOCATION OF WELL (Report location clearly and in accordance with any State requirements.)

At surface

790' FSL & 1450' FWL Section 34 T32N, R9W, NMPM

At proposed prod. zone

14. DISTANCE IN MILES AND DIRECTION FROM NEAREST TOWN OR POST OFFICE*

18.4 miles northeast of Aztec, New Mexico

15. DISTANCE FROM PROPOSED*

LOCATION TO NEAREST

PROPERTY OR LEASE LINE, FT.

(Also to nearest ddfg unit line, if any)

790'

18. DISTANCE FROM PROPOSED LOCATION*

TO NEAREST WELL, DRILLING, COMPLETED,

OR APPLIED FOR, ON THIS LEASE, FT.

NA

21. ELEVATIONS (Show whether DF, RT, GR, etc.)

6608' GL

22. APPROX. DATE WORK WILL START*

May, 1997

This action is subject to technical and

procedural review pursuant to 43 CFR 3165.3

and appeal pursuant to 43 CFR 3165.4.

PROPOSED CASING AND CEMENTING PROGRAM

**DRILLING OPERATIONS AUTHORIZED ARE
SUBJECT TO COMPLIANCE WITH ATTACHED
"GENERAL REQUIREMENTS"**

SIZE OF HOLE	GRADE, SIZE OF CASING	WEIGHT PER FOOT	SETTING DEPTH	
12 1/4"	9 5/8" J/K-55	36	360	195 sxs Class G.2% CaCl ₂ 1/4 #/sk celloflakes
8 3/4"	7" J/K-55	20	3892	435 sxs 65/35 Class G Poz..100 sxs Class G
6 1/4"	4 1/2" J/K-55	10.5	6213	175 sxs 65/35 Class G Poz..100 sxs Class G

McElvain Oil & Gas Properties, Inc. proposes to spud in the San Jose Formation and will drill a 12 1/4" hole to 360'. 9 5/8" casing will be run and cemented to surface. WOC 12 hours. Test casing and BOPE to 600 psig for 15 minutes. Drill a 8 3/4" hole to 3892' with fresh water mud. No abnormal pressures or poisonous gases are anticipated. Adequate weight materials will be on location to control any unforeseen flows from the Fruitland sands. Log well from TD to base of surface casing. Run 7" intermediate casing and cement to surface. WOC for 12 hours. Pressure test casing and BOPE to 1500 psig for 15 minutes. Drill 6 1/4" hole with air & mist to 6213'. Log well from TD to base of the intermediate casing. Run a 4 1/2" liner from 3772' to TD and cement in place. Move out drilling rig and move in completion unit. Test casing to 2500 psig. Run cased hole correlation logs. Perforate the Mesaverde formation and stimulate with a fresh water based system.

Surface ownership is Federal (BLM).

Access road and pipeline right of way is included with this application.

IN ABOVE SPACE DESCRIBE PROPOSED PROGRAM: If proposal is to deepen, give data on present productive zone and proposed new productive zone. If proposal is to drill or deepen directionally, give pertinent data on subsurface locations and measured true vertical depths. Give blowout preventer program, if any.

24.

SIGNED

TITLE AGENT

DATE April 23, 1997

(This space for Federal or State office use)

PERMIT NO.

APPROVAL DATE

SEP 10 1997

Application approval does not warrant or certify that the applicant holds legal or equitable title to those rights in the subject lease which would entitle the applicant to conduct operations thereon.

CONDITIONS OF APPROVAL, IF ANY:

APPROVED BY

D/ Duane W. Spencer

TITLE

DATE

SEP 10 1997

BLM/CD

District I
PO Box 1988, Hobbs, NM 88241-1988
District II
PO Drawer DD, Artesia, NM 88211-0719
District III
1000 Rio Brazos Rd., Aztec, NM 87410
District IV
PO Box 2088, Santa Fe, NM 87504-2088

State of New Mexico
Energy, Minerals & Natural Resources Department

OIL CONSERVATION DIVISION
PO Box 2088
Santa Fe, NM 87504-2088

Form C-102
Revised February 21, 1994
Instructions on back
Submit to Appropriate District Office
State Lease - 4 Copies
Fee Lease - 3 Copies

☐ AMENDED REPORT

WELL LOCATION AND ACREAGE DEDICATION PLAT

API Number 30-045-29488	Pool Code 72319	Pool Name Blanco Mesaverde
Property Code 19633	Property Name Sandstone Com	Well Number 1A
OGRID No. 22044	Operator Name McELVAIN OIL AND GAS PROPERTIES	Elevation 6608'

10 Surface Location

UL or lot no. N	Section 34	Township 32-N	Range 9-W	Lot Idn	Feet from the 790	North/South line South	Feet from the 1450	East/West line East	County S.J.
--------------------	---------------	------------------	--------------	---------	----------------------	---------------------------	-----------------------	------------------------	----------------

11 Bottom Hole Location If Different From Surface

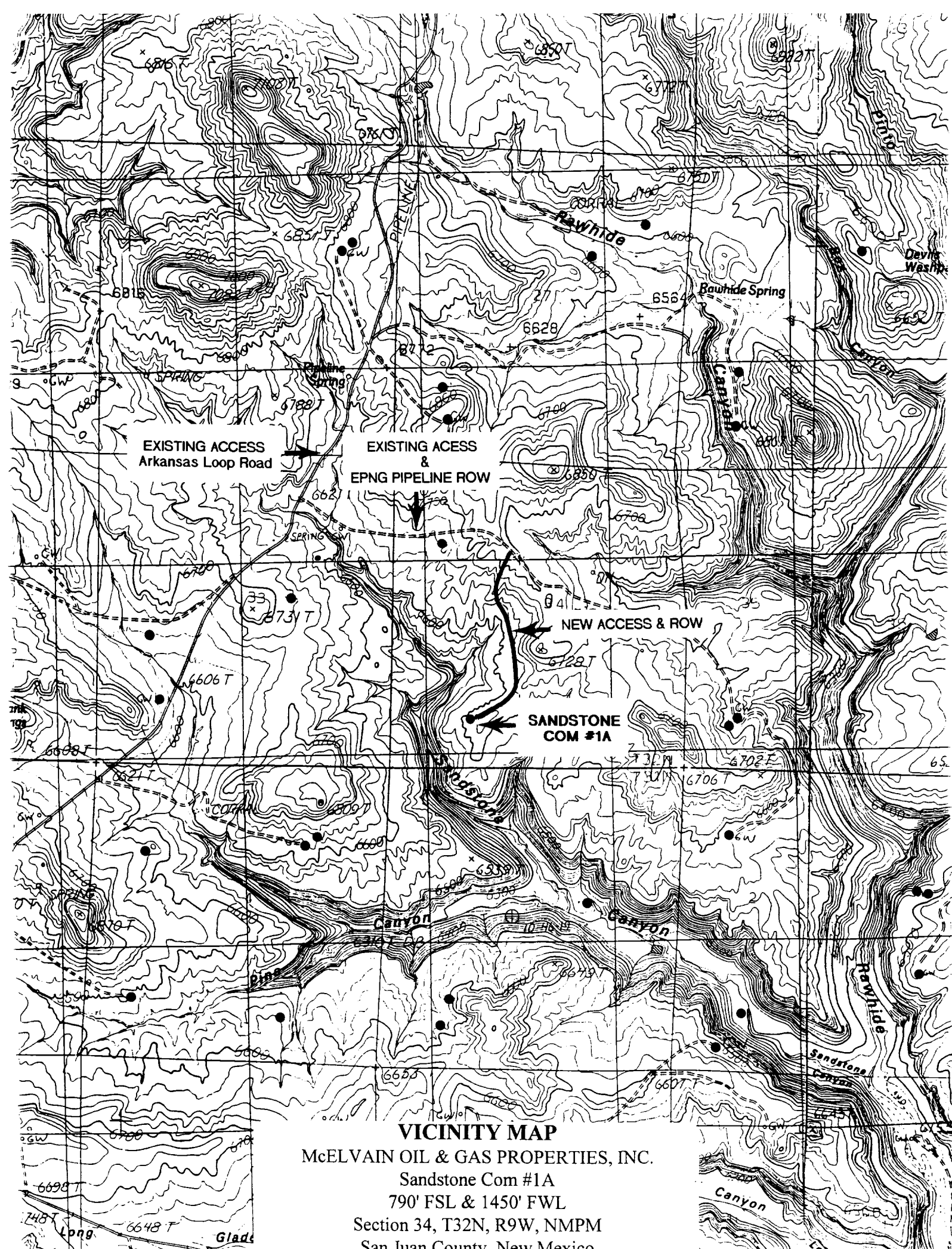
UL or lot no.	Section	Township	Range	Lot Idn	Feet from the	North/South line	Feet from the	East/West line	County
---------------	---------	----------	-------	---------	---------------	------------------	---------------	----------------	--------

12 Dedicated Acres 307.25	13 Joint or Infill Y	14 Consolidation Code	15 Order No.
------------------------------	-------------------------	-----------------------	--------------

NO ALLOWABLE WILL BE ASSIGNED TO THIS COMPLETION UNTIL ALL INTERESTS HAVE BEEN CONSOLIDATED
OR A NON-STANDARD UNIT HAS BEEN APPROVED BY THE DIVISION

16	4975.08'				17 OPERATOR CERTIFICATION
4	3	2	1		I hereby certify that the information contained herein is true and complete to the best of my knowledge and belief
EXISTING WELL ★ 1					Signature John D. Steuble
5	6	7	8		Printed Name John D. Steuble
SF079048					Agent
SF079148					Title 04/23/97
12	11	10	9		Date
1450'					18 SURVEYOR CERTIFICATION
13	14	15	16		I hereby certify that the well location shown on this plat was plotted from field notes of actual surveys made by me or under my supervision, and that the same is true and correct to the best of my belief.
790'					4/01/97
					Date of Survey
					Signature and Seal of Professional Surveyor
					NEALE C. EDWARDS NEW MEXICO 6857 REGISTERED PROFESSIONAL SURVEYOR
					Certificate Number

2624.82' 2632.74' 2535.76' 2550.90' 2535.75'



VICINITY MAP
McELVAIN OIL & GAS PROPERTIES, INC.
Sandstone Com #1A
790' FSL & 1450' FWL
Section 34, T32N, R9W, NMPM
San Juan County, New Mexico