

SOFTROCK GEOLOGICAL SERVICES

591 CR 233, Durango, CO (970) 247-7726

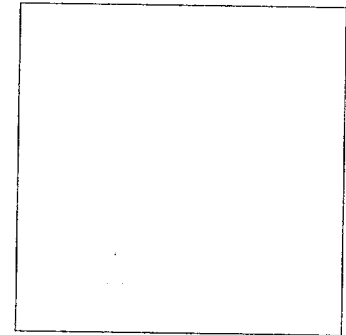
WELL INFORMATION

COMPANY: Phillips Petroleum
WELL NAME: San Juan 32-7 • 211R
LOCATION: 790' FSL 1580' FWL Sec 35 T32N R7W
San Juan County, NM
ELEVATION: 6541' GL 6557' KB
FIELD: Basin Fruitland

INTERVAL LOGGED: 3123 - 3336' DATE LOGGED: 7/30/98
CONTRACTOR: Big A 53, David Green Co. Man
SPUD DATE: 7/25/98

WELLSITE GEOLOGISTS: Dan Wyckoff, Mike Tichi
GAS INSTRUMENTATION: FID Chromatograph and Total Gas Detector

SECTION 35



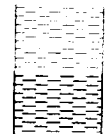
HOLE SIZES - CASING DATA - MUD TYPES

HOLE SIZES: 12.25" to 376'
8.75" to 3123'
6.25" from 3123 to TD
CASING SIZES: 9 5/8" to 376' K55 36 LB
7" to 3123' K55 20 LB
MUD TYPES: Produced Water



CONGL

SS



SLTST

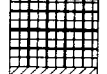
SH



COAL



CHERT



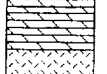
SALT



ANHY



LS



DOL



IGNEOUS



BENTONITE



TUFF

ABBREVIATIONS

Ck - Filter Cake
CO - Circulate Out
CG - Connection Gas
DC - Depth Correction
DS - Directional Survey
DST - Drill Stem Test
DTG - Down Time Gas
LAT - Logged After Trip
NB - New Bit
OB - Old Bit
NR - No Returns
pH - pH of Mud
PP - Pump Pressure
RPM - Rotary Speed
SPM - Pump Strokes
TG - Trip Gas
Vis - Viscosity of Mud
WL - Water Loss of Mud
WOB - Weight on Bit
WT - Weight of Mud

LITHOLOGY MODIFIERS

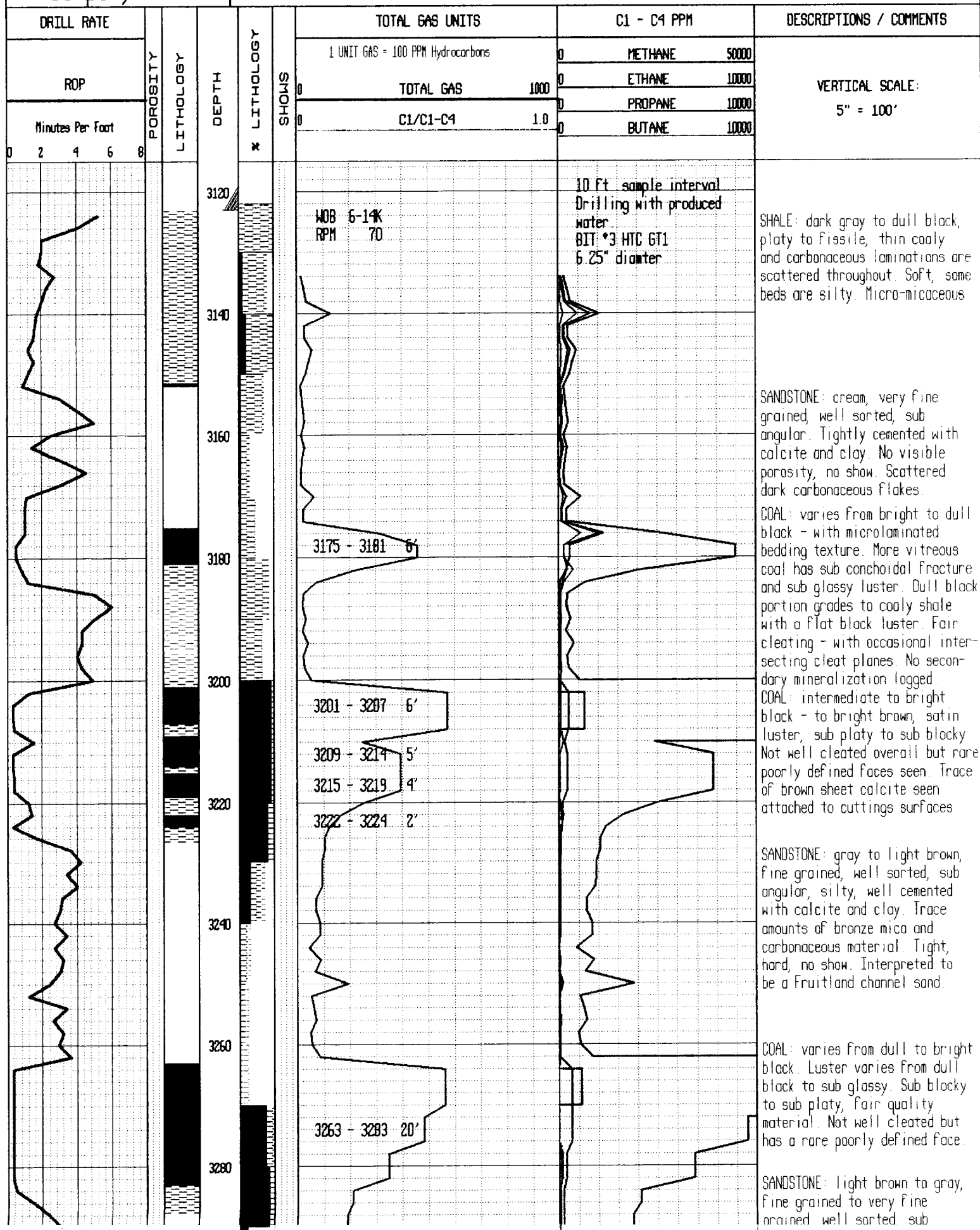
A - Anhydritic
B - Bentonitic
C - Calcareous
CC - Carbonaceous / Coaly
D - Dolomitic
F - Fossiliferous
G - Glauconitic
O - Oolitic
P - Pyritic
S - Siliceous

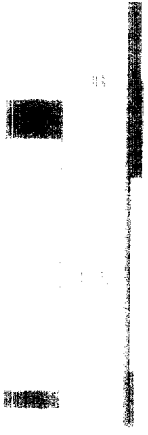
SPECIAL SYMBOLS

- Core - DST
 - Desorption Can
- Slide

Company: Phillips Petroleum

Well: San Juan 32-7 * 211R





05

401 401

101



301 301

401 401