

UNITED STATES
DEPARTMENT OF THE INTERIOR
BUREAU OF LAND MANAGEMENT

SUBMIT IN TRIPLICATE*
(Other instructions on
reverse side)

FORM APPROVED
OMB NO. 1004-0136
Expires: February 28, 1995

RECEIVED
BLM

APPLICATION FOR PERMIT TO DRILL OR DEEPEN

1a. TYPE OF WORK

DRILL ☒

DEEPEN ☐

b. TYPE OF WELL

OIL
WELL ☐

GAS
WELL ☒

OTHER

070 FARMINGTON, NM
SINGLE ZONE ☒ MULTIPLE ZONE ☐

2. NAME OF OPERATOR

Phillips Petroleum Company 17654

3. ADDRESS AND TELEPHONE NO.

5525 Highway 64, NBU 3004, Farmington, NM 87401

505-599-3454

4. LOCATION OF WELL (Report location clearly and in accordance with any State requirements.)
At surface

Unit K, 1509' FSL & 1522' FWL

At proposed prod. zone

Same as above

14. DISTANCE IN MILES AND DIRECTION FROM NEAREST TOWN OR POST OFFICE

8 miles southeast of Bonadad, Colorado

OIL CON. DIV.

15. DISTANCE FROM PROPOSED*

LOCATION TO NEAREST

PROPERTY OR LEASE LINE, FT.

(Also to nearest drlg. unit line, if any)

<100' from SF-079048

16. NO. OF ACRES IN LEASE

390.80 acres

17. NO. OF ACRES ASSIGNED
TO THIS WELL

288.73

18. DISTANCE FROM PROPOSED LOCATION*

TO NEAREST WELL, DRILLING, COMPLETED,

OR APPLIED FOR, ON THIS LEASE, FT.

3941'

20. ROTARY OR CABLE TOOLS

Rotary

21. ELEVATIONS (Show whether DF, RT, GR, etc.)

7085' (unprepared ground level)

This action is subject to technical and
procedural review pursuant to 43 CFR 3165.3
and appeal pursuant to 43 CFR 3165.4.

22. APPROX. DATE WORK WILL START*

March 1998

23. PROPOSED CASING AND CEMENTING PROGRAM

| SIZE OF HOLE | GRADE SIZE OF CASING | WEIGHT PER FOOT | SETTING DEPTH | QUANTITY OF CEMENT |
|--------------|----------------------|-----------------|---------------|-----------------------------|
| 12-1/4" | 9-5/8" | 36#, J/K-55 | 350 | 185 sx C1 B (204 cf) |
| 8-3/4" | 7" | 20#, J/K-55 | 3440' | Lead -500 sx C1 B (1055 cf) |
| | | | | Tail - 150 sx C1 B (180 cf) |
| 6 - 1/4" | 5-1/2" | 15.5# J/K-55 | 3420' - TD | |

* DRILLING OPERATIONS AUTHORIZED ARE
SUBJECT TO COMPLIANCE WITH ATTACHED
"GENERAL REQUIREMENTS"

* The 6-1/4" interval from the 7" casing shoe to the base of the coal may be underreamed to 9-1/2".

See the drilling prognosis for more details on the 5-1/2" liner.

See attached for BOP equipment, mud program and cathodic protection.

See attached for gas & water pipeline surveys for ROW information, as well as the access road survey.

Per OCD (Ernie Busch) see attached Non-Standard Gas Proration Unit application made by McElvain Oil & Gas for the Stateline Com well #1 in same section for reference.

IN ABOVE SPACE DESCRIBE PROPOSED PROGRAM: If proposal is to deepen, give data on present productive zone and proposed new productive zone. If proposal is to drill or deepen directionally, give pertinent data on subsurface locations and measured and true vertical depths. Give blowout preventer program, if any.

24.

SIGNED

TITLE

Regulatory Assistant

DATE

2-19-98

(This space for Federal or State office use)

PERMIT NO.

APPROVAL DATE

Application approval does not warrant or certify that the applicant holds legal or equitable title to those rights in the subject lease which would entitle the applicant to conduct operations thereon.

CONDITIONS OF APPROVAL, IF ANY:

NSP-R-1085

NMOC

APPROVED BY

TITLE

DATE

APR 13 1998

*See Instructions On Reverse Side

Title 18 U.S.C. Section 1001, makes it a crime for any person knowingly and willfully to make to any department or agency of the United States any false, fictitious or fraudulent statements or representations as to any matter within its jurisdiction.

DISTRICT I
P.O. Box 1980, Hobbs, N.M. 88241-1980

DISTRICT II
P.O. Drawer DD, Artesia, N.M. 88211-0719

DISTRICT III
1000 Rio Brazos Rd., Aztec, N.M. 87410

DISTRICT IV
PO Box 2088, Santa Fe, NM 87504-2088

State of New Mexico
Energy, Minerals & Natural Resources Department

Form C-102
Revised February 21, 1994
Instructions on back
Submit to Appropriate District Office
State Lease - 4 Copies
Fee Lease - 3 Copies

OIL CONSERVATION DIVISION FEB 19 PM 12:26

P.O. Box 2088
Santa Fe, NM 87504-2088

070 FARMINGTON, NM

☐ AMENDED REPORT

WELL LOCATION AND ACREAGE DEDICATION PLAT

| | | | |
|------------------------------|-----------------------------------------|---------------------|------------------------------------|
| *API Number 30-045-29585 | | *Pool Code 71629 | *Pool Name Basin Fruitland Coal |
| *Property Code 0074732347 | *Property Name SAN JUAN 32 FED COM 7 | | *Well Number 1 |
| *OGRID No. 017654 | *Operator Name PHILLIPS PETROLEUM | | *Elevation 7085 |

¹⁰ Surface Location

| UL or lot no. | Section | Township | Range | Lot Idn | Feet from the | North/South line | Feet from the | East/West line | County |
|---------------|---------|----------|-------|---------|---------------|------------------|---------------|----------------|----------|
| K | 7 | 32-N | 9-W | | 1509 | SOUTH | 1522 | WEST | SAN JUAN |

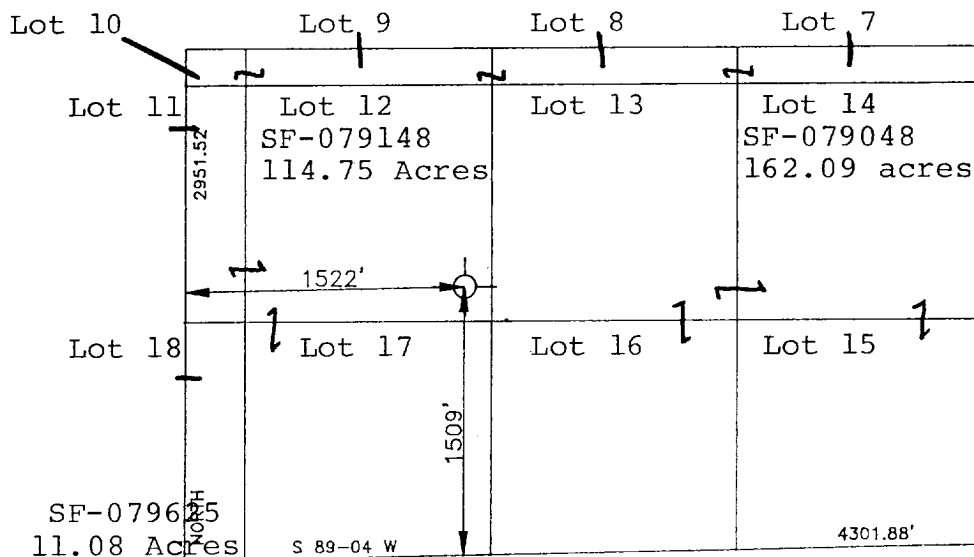
¹¹ Bottom Hole Location If Different From Surface

| UL or lot no. | Section | Township | Range | Lot Idn | Feet from the | North/South line | Feet from the | East/West line | County |
|---------------|---------|----------|-------|---------|---------------|------------------|---------------|----------------|--------|
| K | | | | | | | | | |

| | | | |
|-----------------------------------------|------------------------------------|---------------------------------------|-------------------------|
| ¹² Dedicated Acres 288.73 | ¹³ Joint or Infill N | ¹⁴ Consolidation Code C | ¹⁵ Order No. |
|-----------------------------------------|------------------------------------|---------------------------------------|-------------------------|

NO ALLOWABLE WILL BE ASSIGNED TO THIS COMPLETION UNTIL ALL INTERESTS HAVE BEEN CONSOLIDATED
OR A NON-STANDARD UNIT HAS BEEN APPROVED BY THE DIVISION

16



¹⁷ OPERATOR CERTIFICATION

I hereby certify that the information contained herein is true and complete to the best of my knowledge and belief

Richard Allred
Signature

Richard Allred

Printed Name
Development Superintendent

Title
February 3, 1998

Date

¹⁸ SURVEYOR CERTIFICATION

I hereby certify that the well location shown on this plat was plotted from field notes of actual surveys made by me or under my supervision, and that the same is true and correct to the best of my belief.

MAY 8, 1990

Date of Survey

Signature and Seal of Professional Surveyor

[Signature]

8894

PROFESSIONAL LAND SURVEYOR

8894

Certificate Number

SW/4 SEC.7, T.32 N., R.9 W., N.M.P.M.,
SAN JUAN COUNTY, NEW MEXICO

4' 30"

