

<p>23 I hereby certify that the information given above is true and complete to the best of my knowledge and belief.</p> <p>Signature: <i>Peggy Bradfield</i></p> <p>Printed name: Peggy Bradfield</p> <p>Title: Regulatory/Compliance Administrator</p> <p>Date: 06-11-98 Phone: 505-326-9700</p>		<p>OIL CONSERVATION DIVISION</p> <p>Approved by: <i>Ernie Busch</i> 6-29-98</p> <p>Title: DEPUTY OIL & GAS INSPECTOR, DIST. #3</p> <p>Approval Date: JUN 25 1998 Expiration Date: JUN 25 1999</p> <p>Conditions of Approval: <i>HOLD C-104 FOR NSP</i></p> <p>Attached <input type="checkbox"/> <i>11/56</i></p>	
---	--	---	--

RECEIVED

777 151 111

111

District I
PO Box 1990, Hobbs, NM 88241-1990

District II
PO Drawer DD, Artesia, NM 88211-0719

District III
1000 Rio Brazos Rd., Aztec, NM 87410

District IV
PO Box 2088, Santa Fe, NM 87504-2088

State of New Mexico
Energy, Minerals & Natural Resources Department

OIL CONSERVATION DIVISION
PO Box 2088
Santa Fe, NM 87504-2088

Form C-
Revised February 21, 1988
Instructions on 1
Submit to Appropriate District Of
State Lease - 4 Cor
Fee Lease - 3 Cor

☐ AMENDED REPORT

WELL LOCATION AND ACREAGE DEDICATION PLAT

¹ API Number 30-045-29628	² Pool Code 72319/71599	³ Pool Name Blanco Mesaverde/Basin Dakota
⁴ Property Code 6784	⁵ Property Name ALLISON UNIT	⁶ Well Number 61
⁷ GRID No. 14538	⁸ Operator Name BURLINGTON RESOURCES OIL & GAS COMPANY	⁹ Elevation 6225'

¹⁰ Surface Location

UL or lot no.	Section	Township	Range	Lot Idn	Feet from the	North/South line	Feet from the	East/West line	County
G	7	32N	6W		800	NORTH	2460	EAST	SAN JUAN

¹¹ Bottom Hole Location If Different From Surface

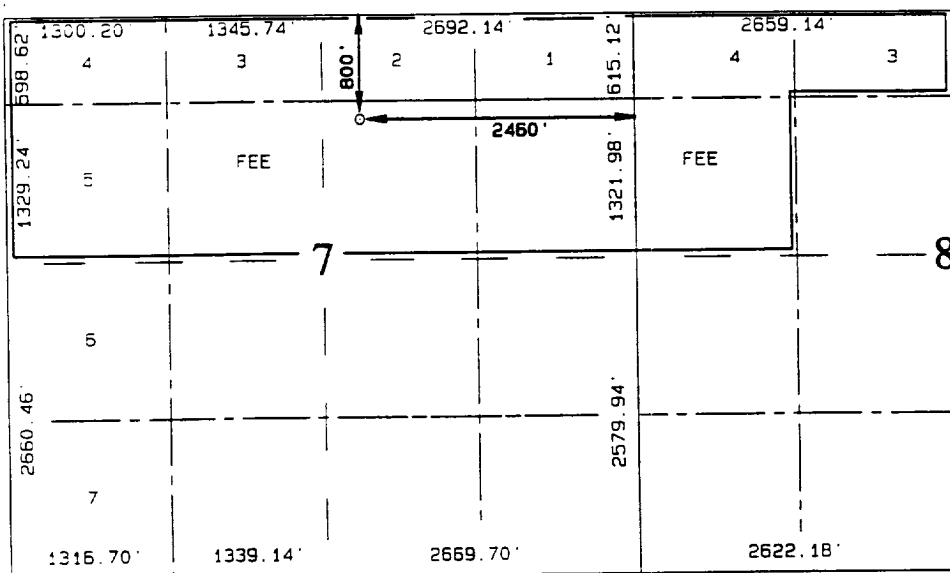
UL or lot no.	Section	Township	Range	Lot Idn	Feet from the	North/South line	Feet from the	East/West line	County

¹² Designated Area MV - 348.78 DK - 348.78	¹³ Amount or Infill	¹⁴ Consolidation Code	¹⁵ Order No.

RECEIVED
JUN 16 1998

OIL CON. DIV.
DIST. 3

NO ALLOWABLE WILL BE ASSIGNED TO THIS COMPLETION UNTIL ALL INTERESTS HAVE BEEN CONSOLIDATED
OR A NON-STANDARD UNIT HAS BEEN APPROVED BY THE DIVISION



¹⁷ OPERATOR CERTIFICATION

I hereby certify that the information contained here is true and complete to the best of my knowledge and belief.

Peggy Bradfield
Signature

Peggy Bradfield
Printed Name

Regulatory Administrator
Title

6-11-98
Date

SURVEYOR CERTIFICATION

I hereby certify that the well location shown on this plat was plotted from field notes of actual surveys made on or under my supervision and that the same is true and correct to the best of my belief.

MAY 7, 1998
Date of Survey

Signature and Seal of Professional Surveyor

NEALEC EDWARDS
NEW MEXICO
6857
6857
Certificate Number