



NEW MEXICO ENERGY, MINERALS  
& NATURAL RESOURCES DEPARTMENT

OIL CONSERVATION DIVISION  
2040 South Pacheco Street  
Santa Fe, New Mexico 87505  
(505) 827-7131

October 13, 1998

Burlington Resources Oil & Gas Company  
P. O. Box 4289  
Farmington, New Mexico 87499-4289  
Attention: Peggy Bradfield

RECEIVED  
OCT 15 1998  
OIL CON. DIV.  
DIST. 3

*Administrative Order NSL-4148*

Dear Ms. Bradfield:

Reference is made to the following: (i) your two applications dated July 20, 1998 for exceptions to the well location requirements provided within the "*Special Rules and Regulations for the Blanco-Mesaverde Pool/Special Rules and Regulations for the Basin-Dakota Pool*," as promulgated by Division Order No. R-10987, for Burlington Resources Oil & Gas Company's ("Burlington") proposed Allison Unit Well No. 61 (API No. 30-045-29628) to be drilled at an unorthodox gas well location in both the Blanco-Mesaverde and Basin-Dakota Pools 800 feet from the North line and 2460 feet from the East line (Unit G) of Section 7, Township 32 North, Range 6 West, NMPM, San Juan County, New Mexico and Allison Unit Well No. 61-M (API No. 30-045-29629) to be drilled at an unorthodox infill gas well location in both the Blanco-Mesaverde and Basin-Dakota Pools 1880 feet from the North line and 1165 feet from the West line (Lot 5/Unit E) of Section 7; (ii) the Division's response to both of these applications by a letter from Mr. Michael E. Stogner dated August 13, 1998; (iii) your response letters with additional information submitted to the Division on September 22, 1998; (iv) the records of the Division in Santa Fe.

Blanco-Mesaverde and Basin-Dakota gas production attributed to both wells are to be dedicated to the previously authorized 308.78-acre non-standard gas spacing and proration units, both of which comprise the following described area:

SAN JUAN COUNTY, NEW MEXICO  
TOWNSHIP 32 NORTH, RANGE 6 WEST, NMPM  
Section 7: Lots 1 through 5, S/2 NE/4, and SE/4 NW/4  
Section 8: Lots 3 and 4 and SW/4 NW/4.

By Division Order No. R-11003, issued in Case No. 11989 dated July 13, 1998, this 308.78-acre unit was approved for gas production from the Blanco-Mesaverde Pool. By Division Order No. R-2046, issued in Case No. 2327 dated August 14, 1961, as amended by Division Order No. R-2046-A, issued in Case No. 7479 dated March 2, 1982, the same acreage was designated a non-standard gas spacing and proration unit for Basin-Dakota Pool gas production.

Both applications have been duly filed under the provisions of Rules 104.F and 605.B of the

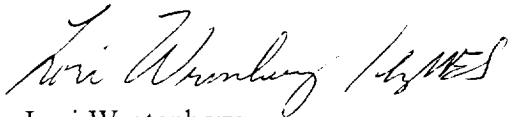
Administrative Order NSL-4148  
Burlington Resources Oil & Gas Company  
October 13, 1998  
Page 2

---

Rules and Regulations of the New Mexico Oil Conservation Division ("Division").

By the authority granted me under the provisions of Division Rule 104.F(2), the above-described unorthodox Basin-Dakota/Blanco-Mesaverde gas well locations for both the Allison Unit Well Nos. 61 and 61-M are hereby approved. These two wells and both of the previously authorized non-standard spacing units will be subject to all existing rules, regulations, policies, and procedures applicable to prorated gas pools in Northwest, New Mexico.

Sincerely,

A handwritten signature in cursive script, appearing to read "Lori Wrotenberg / by MES".

Lori Wrotenberg  
Director

LW/MES/kv

cc: New Mexico Oil Conservation Division - Aztec /  
U. S. Bureau of Land Management - Farmington  
File: Case No. 11989

# BURLINGTON RESOURCES

SAN JUAN DIVISION

Sent Federal Express September 21, 1998

Mr. Michael Stogner  
New Mexico Oil Conservation Division  
2040 South Pacheco  
Santa Fe, New Mexico 87505

RECEIVED  
SEP 22 1998  
OIL CON. DIV.  
DIST. 3

Re: Allison Unit #61M  
1880'FNL, 1165'FWL, Section 7, T-32-N, R-6-W, San Juan County, New Mexico  
30-045-29629

Dear Mr. Stogner:

Burlington Resources has applied for a non-standard location for the referenced well. This letter is in response to your letter dated August 13, 1998 requesting additional information concerning topographic conditions for this application.

- This location will avoid the agricultural development of the landowner's roller-system irrigated fields as shown on the attached topographic and aerial view maps.
- The location minimizes surface disturbance for the access road and pipeline to the well.
- This location is to avoid both the Rosa Meadows and Lakeview Heights Subdivisions as shown on the attached topographic and aerial view maps.

Please let me know if you need further information.

Sincerely,

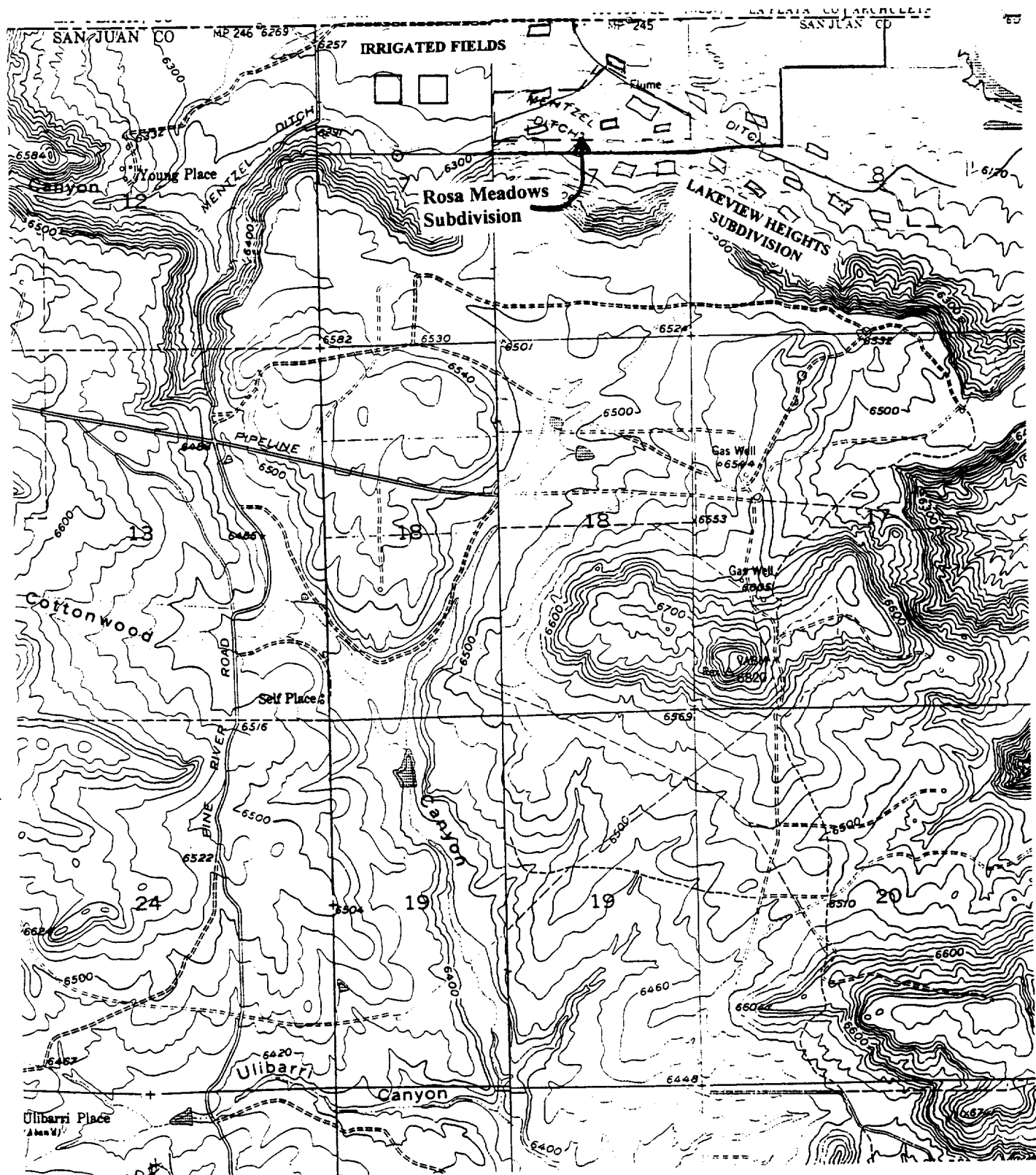


Peggy Bradfield  
Regulatory/Compliance Administrator

xc: NMOCD – Aztec  
Bureau of Land Management – Farmington

# BURLINGTON RESOURCES OIL & GAS COMPANY ALLISON UNIT #61M

1880' FNL & 1165' FWL, SECTION 7, T32N, R6W, N.M.P.M.  
SAN JUAN COUNTY, NEW MEXICO



BURLINGTON RESOURCES OIL & GAS COMPANY ALLISON UNIT #61M

1880' FNL & 1165' FWL, SECTION 7, T32N, R6W, N.M.P.M.  
SAN JUAN COUNTY, NEW MEXICO

