

UNITED STATES
DEPARTMENT OF THE INTERIOR
BUREAU OF LAND MANAGEMENT

APPLICATION FOR PERMIT TO DRILL OR DEEPEN

1a. TYPE OF WORK

DRILL ☒DEEPEN ☐

b. TYPE OF WELL

OIL
WELL ☐GAS
WELL ☒

OTHER

SINGLE
ZONE ☒MULTIPLE
ZONE ☐

2. NAME OF OPERATOR

WILLIAMS PRODUCTION COMPANY

OGRID 120782

3. ADDRESS AND TELEPHONE NO.

c/o Walsh Engr. & Prod. Corp.

7415 E. Main

Farmington, NM 87402

(505) 327-4892

4. LOCATION OF WELL (Report location clearly and in accordance with any State requirements.)*

At surface

1190' FSL & 795' FWL

At proposed prod. zone Same

14. DISTANCE IN MILES AND DIRECTION FROM NEAREST TOWN OR POST OFFICE*

25 miles NE of Blanco, New Mexico

10. DISTANCE FROM PROPOSED*

LOCATION TO NEAREST
PROPERTY OR LEASE LINE, FT.
(Also to nearest drlg. unit line, if any)

795'

18. DISTANCE FROM PROPOSED LOCATION*
TO NEAREST WELL, DRILLING, COMPLETED,
OR APPLIED FOR, ON THIS LEASE, FT.

1000'

16. NO. OF ACRES IN LEASE

2561.86

19. PROPOSED DEPTH

6235'

17. NO. OF ACRES ASSIGNED
TO THIS WELL

320

20. ROTARY OR CABLE TOOLS

Rotary

21. ELEVATIONS (Show whether DF, RT, GR, etc.)

6494' Gr

This action is subject to technical and

procedural review pursuant to 43 CFR 3160.3.

and appeal pursuant to 43 CFR 3160.4.

22. APPROX. DATE WORK WILL START*

June 1998

23.

DRILLING OPERATIONS AUTHORIZED ARE

SUBJECT TO COMPLIANCE WITH ATTACHED

GENERAL REQUIREMENTS

SIZE OF HOLE	GRADE SIZE OF CASING	WEIGHT PER FOOT	SETTING DEPTH	AMOUNT OF CEMENT
12 1/4"	9 5/8"	36#	250	157 cuft Cl "B" w/3% CaCl2
8 3/4"	7"	20#	3645	612 cuft 65/35 Poz184 cuft Cl "B"
6 1/4"	4 1/2"	10.5#	3545 - 6235	442 cuft Cl "B" w/4% gel & additives

WILLIAMS PRODUCTION COMPANY proposes to drill a vertical well to develop the Mesa Verde Formation at the above described site in accordance with the attached drilling and surface use programs.

This location has been archaeologically surveyed by Southwest Archaeological Services. Copies of the report will be submitted directly to your office.

This APD also is serving as an application to obtain BLM road and pipeline ROW. This well will be accessed by a new road 20'x 1050' which crosses the SW/SW and NW/SW of Section 33, T32N, R6W where it joins an existing road. This road crosses the SE/NW, NE/NW, and NW/NW of Section 33, the S/2 SE/4 SE/NW, N/2 NW/4, of Section 32, SW/SW of Section 29, SE/SE, NW/SE, SE/NW, and NW/NW of Section 30, all of T32N, R6W and the NE/NE of Section 25, T32N, R7W where it joins NM CR 4020. The pipeline route is shown on Plat #4.

IN ABOVE SPACE DESCRIBE PROPOSED PROGRAM: If proposal is to deepen, give data on present productive zone and proposed new productive zone. If proposal is to drill or deepen directionally, give pertinent data on subsurface locations and measured and true vertical depths. Give blowout preventer program, if any.

24.

SIGNED

Paul C. Thompson

TITLE Paul C. Thompson, Agent

DATE 3/24/98

(This space for Federal or State office use)

PERMIT NO.

APPROVAL DATE

Application approval does not warrant or certify that the applicant holds legal or equitable title to those rights in the subject lease which would entitle the applicant to conduct operations thereon.

CONDITIONS OF APPROVAL, IF ANY:

APPROVED BY

Hand C-104 for NSL @
Chanada

TITLE

Geologist

DATE

6/24/98

*See Instructions On Reverse Side

NMOCD

District I
PO Box 1980, Hobbs, NM 88241-1980

State of New Mexico
Energy, Minerals & Natural Resources Department

Form C-102
Revised February 21, 1994

District II
PO Drawer DD, Artesia, NM 88211-0719

Instructions on back
Submit to Appropriate District Office
State Lease - 4 Copies
Fee Lease - 3 Copies

District III
1000 Rio Brazos Rd., Aztec, NM 87410

OIL CONSERVATION DIVISION
PO Box 2088
Santa Fe, NM 87504-2088

District IV
PO Box 2088, Santa Fe, NM 87504-2088

☐ AMENDED REPORT

070 JUN 11 PM 12:41
WELL LOCATION AND ACREAGE DEDICATION PLAT

*API Number 30045-29631		*Pool Code 72319	*Pool Name Blanco M
*Property Code 17033	*Property Name ROSA UNIT		*Well Number 151A
*OGRID No. 130782	*Operator Name WILLIAMS PRODUCTION COMPANY		*Elevation 6443'

10 Surface Location

UL or lot no. L	Section 33	Township 32N	Range 6W	Lot Idn	Feet from the 1940	North/South line SOUTH	Feet from the 920	East/West line WEST	County SAN JUAN
--------------------	---------------	-----------------	-------------	---------	-----------------------	---------------------------	----------------------	------------------------	--------------------

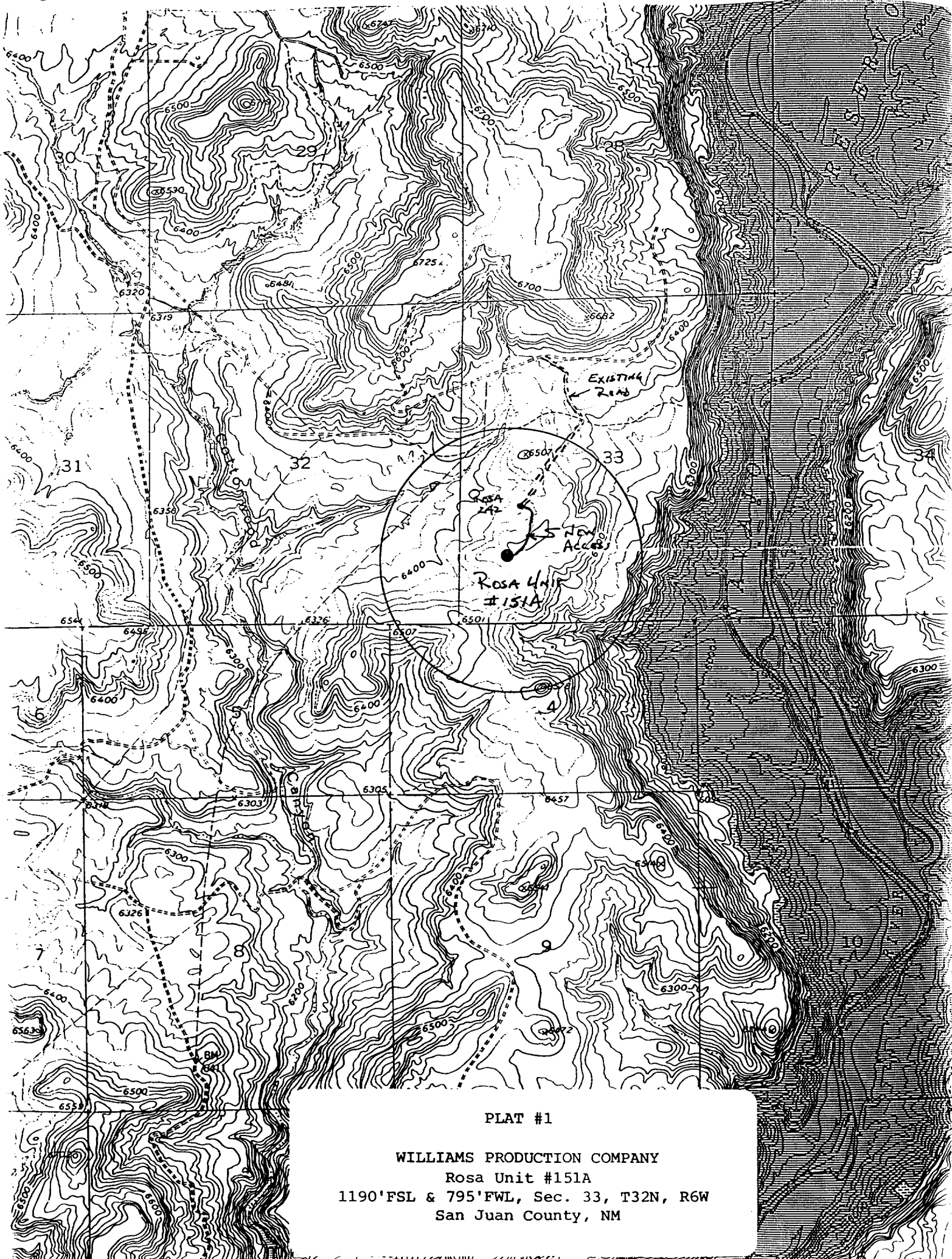
11 Bottom Hole Location If Different From Surface

UL or lot no.	Section	Township	Range	Lot Idn	Feet from the	North/South line	Feet from the	East/West line	County
---------------	---------	----------	-------	---------	---------------	------------------	---------------	----------------	--------

12 Dedicated Acres 320	13 Joint or Infill	14 Consolidation Code	15 Order No.
---------------------------	--------------------	-----------------------	--------------

NO ALLOWABLE WILL BE ASSIGNED TO THIS COMPLETION UNTIL ALL INTERESTS HAVE BEEN CONSOLIDATED
OR A NON-STANDARD UNIT HAS BEEN APPROVED BY THE DIVISION

<p>151</p> <p>RECEIVED JUN 29 1998 OIL CON. DIV. DIST. 3</p> <p>33</p>	<p>17 OPERATOR CERTIFICATION</p> <p>I hereby certify that the information contained herein is true and complete to the best of my knowledge and belief.</p> <p><u>Paul C. Thompson</u> Signature</p> <p>Paul C. Thompson Printed Name</p> <p>Agent</p> <p>Title</p> <p>6/8/98 Date</p>
	<p>18 SURVEYOR CERTIFICATION</p> <p>I hereby certify that the well location shown on this plat was plotted from field notes of actual surveys made by me or under my supervision, and that the same is true and correct to the best of my belief.</p> <p>MAY 26, 1998 Date of Survey</p> <p>Signature and Seal of Professional Surveyor</p> <p>NEALE C. EDWARDS NEW MEXICO 6857 6857 Certificate Number</p>



PLAT #1

WILLIAMS PRODUCTION COMPANY

Rosa Unit #151A

1190'FSL & 795'FWL, Sec. 33, T32N, R6W
San Juan County, NM