

UNITED STATES  
DEPARTMENT OF THE INTERIOR  
BUREAU OF LAND MANAGEMENT

APPLICATION FOR PERMIT TO DRILL, DEEPEN, OR PLUG BACK

1a. Type of Work DRILL	5. Lease Number SF-081155 Unit Reporting Number
1b. Type of Well GAS	6. If Indian, All. or Tribe
2. Operator <b>BURLINGTON RESOURCES</b> Oil & Gas Company 14538	7. Unit Agreement Name Allison Unit 6784
3. Address & Phone No. of Operator PO Box 4289, Farmington, NM 87499 (505) 326-9700	8. Farm or Lease Name Allison Unit 9. Well Number 40M
4. Location of Well 800' FSL, 1585' FEL  Latitude 36° 57.6, Longitude 107° 29.8	10. Field, Pool, Wildcat Blanco MV/Basin Dk 72319 71599 11. Sec., Twn, Rge, Mer. (NMPM) 0 Sec 19, T-32-N, R-6-W API # 30-045-29676
14. Distance in Miles from Nearest Town 4 miles to Allison	12. County SJ 13. State NM
15. Distance from Proposed Location to Nearest Property or Lease Line 800'	
16. Acres in Lease	17. Acres Assigned to Well 320 E/2 320 E/2
18. Distance from Proposed Location to Nearest Well, Drig, Compl, or Applied for on this Lease 500' This action is subject to technical and procedural review pursuant to 43 CFR 3165.3 and appeal pursuant to 43 CFR 3165.4.	20. Rotary or Cable Tools Rotary
19. Proposed Depth 7980'	
21. Elevations (DF, FT, GR, Etc.) 6431' GR	22. Approx. Date Work will Start DRILLING OPERATIONS AUTHORIZED ARE SUBJECT TO COMPLIANCE WITH ATTACHED "GENERAL REQUIREMENTS"
23. Proposed Casing and Cementing Program See Operations Plan attached	
24. Authorized by: <u><i>Duane W. Spencer</i></u> (Regulatory/Compliance Administrator)	<u>7-27-98</u> Date

PERMIT NO. \_\_\_\_\_

APPROVAL DATE \_\_\_\_\_

APPROVED BY /s/ Duane W. Spencer

TITLE \_\_\_\_\_

DATE SEP 1 1998

Archaeological Report to be submitted

Threatened and Endangered Species Report to be submitted

NOTE: This format is issued in lieu of U.S. BLM Form 3160-3

Title 18 U.S.C. Section 1001, makes it a crime for any person knowingly and willfully to make to any department or agency of the United States any false, fictitious or fraudulent statements or presentations as to any matter within its jurisdiction.

NMOCD

District I  
PO Box 1980, Hobbs, NM 88241-1980

District II  
PO Drawer DD, Artesia, NM 88211-0719

District III  
1000 Rio Brazos Rd., Aztec, NM 87410

District IV  
PO Box 2088, Santa Fe, NM 87504-2088

State of New Mexico  
Energy, Minerals & Natural Resources Department

OIL CONSERVATION DIVISION  
PO Box 2088  
Santa Fe, NM 87504-2088

Form C-  
Revised February 21, 1988  
Instructions on back  
Submit to Appropriate District Office  
State Lease - 4 Copies  
Fee Lease - 3 Copies

1:23

☐ AMENDED REPORT

WELL LOCATION AND ACREAGE DEDICATION PLAT

1 API Number 30-045-29676		2 Pool Code 72319/71599		3 Pool Name Blanco Mesaverde/Basin Dakota	
4 Property Code 6784		5 Property Name ALLISON UNIT			6 Well Number 40M
7 OGRID No. 14538		8 Operator Name BURLINGTON RESOURCES OIL & GAS COMPANY			9 Elevation 6431'

10 Surface Location

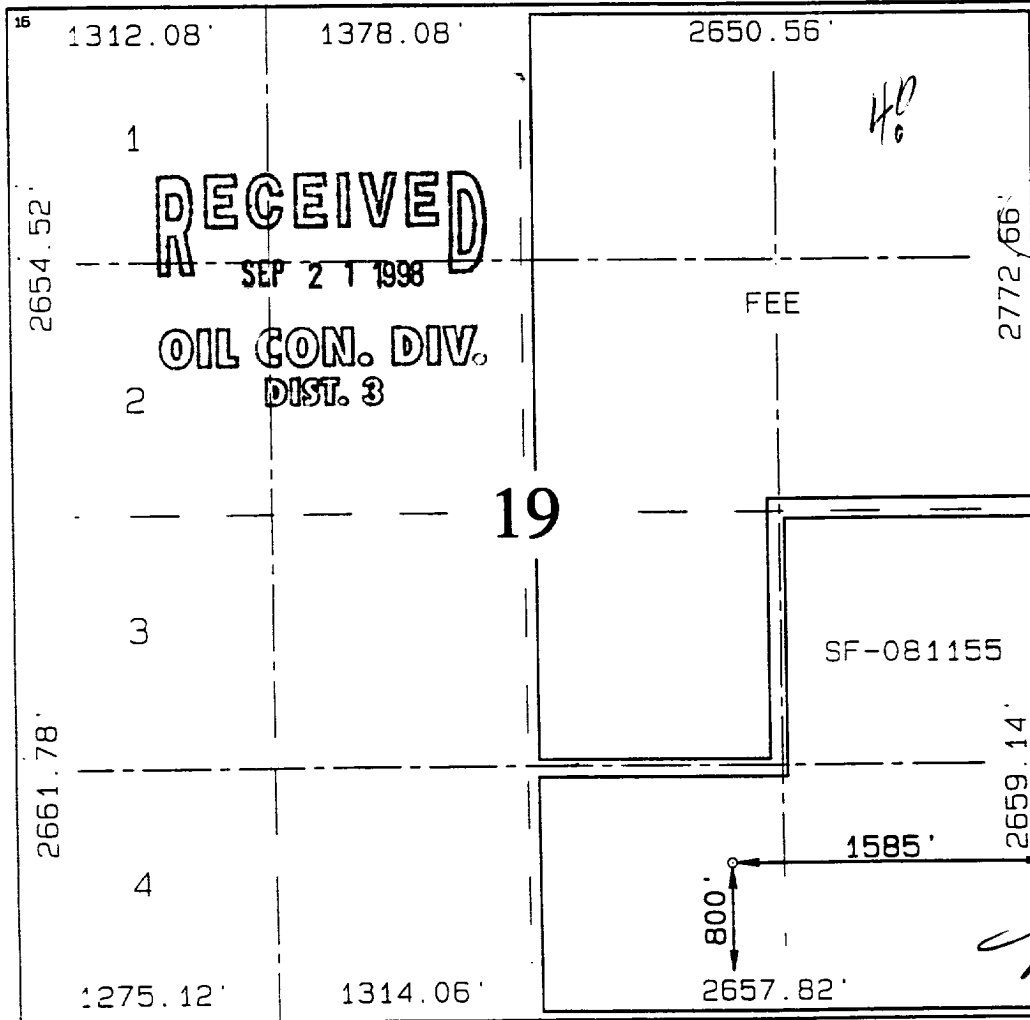
UL or lot no.	Section	Township	Range	Lot Idn	Feet from the	North/South line	Feet from the	East/West line	County
0	19	32N	6W		800	SOUTH	1585	EAST	SAN JU.

11 Bottom Hole Location If Different From Surface

UL or lot no.	Section	Township	Range	Lot Idn	Feet from the	North/South line	Feet from the	East/West line	County

12 Dedicated Acres MV-E/320 DK-E/320	13 Joint or Infill	14 Consolidation Code	15 Order No.
--	--------------------	-----------------------	--------------

NO ALLOWABLE WILL BE ASSIGNED TO THIS COMPLETION UNTIL ALL INTERESTS HAVE BEEN CONSOLIDATED OR A NON-STANDARD UNIT HAS BEEN APPROVED BY THE DIVISION



17 OPERATOR CERTIFICATION

I hereby certify that the information contained herein is true and complete to the best of my knowledge and belief.

*Peggy Bradfield*  
Signature

Peggy Bradfield  
Printed Name

Regulatory Administrator  
Title

7-27-98  
Date

18 SURVEYOR CERTIFICATION

I hereby certify that the well location shown on this was plotted from field notes of actual surveys made by me or under my supervision, and that the same is true and correct to the best of my belief.

JUNE 24, 1998  
Date of Survey

Signature and Seal of Professional Surveyor

NEALE C. EDWARDS  
NEW MEXICO  
6857  
PROFESSIONAL SURVEYOR  
Certificate Number

## OPERATIONS PLAN

**Well Name:** Allison Unit #40M  
**Location:** 800' FSL, 1585' FEL Sec 19, T-32-N, R-6-W  
San Juan County, NM  
Latitude 36° 57.6, Longitude 107° 19.8  
**Formation:** Blanco Mesa Verde/Basin Dakota  
**Elevation:** 6431' GL

<u>Formation Tops:</u>	<u>Top</u>	<u>Bottom</u>	<u>Contents</u>
Surface	San Jose	2266'	
Ojo Alamo	2266'	2394'	aquifer
Kirtland	2394'	2815'	
Fruitland	2815'	3160'	gas
Pictured Cliffs	3160'	3421'	gas
Lewis	3421'	4175'	gas
<b>Intermediate TD</b>	<b>3521'</b>		
Mesa Verde	4175'	4610'	gas
Chacra	4610'	5376'	
Massive Cliff House	5376'	5420'	gas
Menefee	5420'	5626'	gas
Massive Point Lookout	5626'	6981'	gas
Gallup	6981'	7716'	gas
Greenhorn	7716'	7763'	gas
Graneros	7763'	7868'	gas
Dakota	7868'		gas
<b>TD (4 1/2" liner)</b>	<b>7980'</b>		

### Logging Program:

Cased hole - CBL - TD to 200' above TOC, GR/CNL across MV/Dk

### Mud Program:

<u>Interval</u>	<u>Type</u>	<u>Weight</u>	<u>Vis.</u>	<u>Fluid Loss</u>
0- 200'	Spud	8.4-9.0	40-50	no control
200-3521'	LSND	8.4-9.0	30-60	no control
3521-7980'	Gas	n/a	n/a	n/a

Pit levels will be visually monitored to detect gain or loss of fluid control.

### Casing Program (as listed, the equivalent, or better):

<u>Hole Size</u>	<u>Depth Interval</u>	<u>Csg. Size</u>	<u>Wt.</u>	<u>Grade</u>
12 1/4"	0' - 200'	9 5/8"	32.3#	WC-50
8 3/4"	0' - 3521'	7"	20.0#	J-55
6 1/4"	3421' - 7980'	4 1/2"	10.5#	J-55

### Tubing Program:

0' - 7980'      2 3/8"      4.70# EUE

### BOP Specifications, Wellhead and Tests:

#### Surface to Intermediate TD -

11" 2000 psi minimum double gate BOP stack (Reference Figure #1).  
After nipple-up prior to drilling out surface casing, rams and casing will be tested to 600 psi for 30 minutes.

#### Intermediate TD to Total Depth -

11" 2000 psi minimum double gate BOP stack (Reference Figure #1).  
After nipple-up prior to drilling out intermediate casing, rams and casing will be tested to 1500 psi for 30 minutes.

#### Surface to Total Depth -

2" nominal, 2000 psi minimum choke manifold (Reference Figure #3).

BURLINGTON RESOURCES OIL & GAS COMPANY ALLISON UNIT #40M

800' FSL & 1585' FEL, SECTION 19, T32N, R6W, N.M.P.M.

SAN JUAN COUNTY, NEW MEXICO

APD MAP #1

350' NEW BLM CONSTRUCTION  
350' SW/SE SECTION 19, T32N, R6W

