

UNITED STATES
DEPARTMENT OF THE INTERIOR
BUREAU OF LAND MANAGEMENT

APPLICATION FOR PERMIT TO DRILL, DEEPEN, OR PLUG BACK

1a. Type of Work DRILL	5. Lease Number NM-04207 Unit Reporting Number
1b. Type of Well GAS	6. If Indian, All. or Tribe
2. Operator BURLINGTON RESOURCES Oil & Gas Company	7. Unit Agreement Name Allison Unit
3. Address & Phone No. of Operator PO Box 4289, Farmington, NM 87499 (505) 326-9700	8. Farm or Lease Name Allison Unit 9. Well Number 47M
4. Location of Well 1110' FSL, 1570' FEL Latitude 36° 59.5, Longitude 107° 28.7	10. Field, Pool, Wildcat Blanco MV/Basin Dk 11. Sec., Twn, Rge, Mer. (NMPM) Sec 8, T-32-N, R-6-W API # -30-045-29700
14. Distance in Miles from Nearest Town 3 miles to Allison	12. County SJ 13. State NM
15. Distance from Proposed Location to Nearest Property or Lease Line 1110'	17. Acres Assigned to Well 320
16. Acres in Lease	
18. Distance from Proposed Location to Nearest Well, Drlg, Compl, or Applied for on this Lease 2000'	
19. Proposed Depth 7731'	20. Rotary or Cable Tools Rotary
21. Elevations (DF, FT, GR, Etc.) 6179' GR	22. Approx. Date Work will Start DRILLING OPERATIONS AUTHORIZED ARE SUBJECT TO COMPLIANCE WITH ATTACHED "GENERAL REQUIREMENTS"
23. Proposed Casing and Cementing Program See Operations Plan attached	
24. Authorized by: <u><i>Duane W. Spencer</i></u> Regulatory/Compliance Administrator	<u>6-19-98</u> Date

PERMIT NO. _____
APPROVED BY /S/ Duane W. Spencer

APPROVAL DATE

TITLE _____

DATE

Archaeological Report to be submitted

Threatened and Endangered Species Report to be submitted

NOTE: This format is issued in lieu of U.S. BLM Form 3160-3

Title 18 U.S.C. Section 1001, makes it a crime for any person knowingly and willfully to make to any department or agency of the United States any false, fictitious or fraudulent statements or presentations as to any matter within its jurisdiction.

R-2046A
NSL-4103-A

NMOCD

District 1
PO Box 1930, Hobbs, NM 88241-1980

State of New Mexico
Energy, Minerals & Natural Resources Department

Revised February 2
Instructions
Appropriate District
State Lease - 4
Fee Lease - 3

District II
PO Drawer DD, Artesia, NM 88211-0713

OIL CONSERVATION DIVISION
PO Box 2088
Santa Fe, NM 87504-2088

District III
1000 Rio Erazos Rd., Aztec, NM 87410

District IV
PO Box 2038, Santa Fe, NM 87504-2038

12 JUL 27 PM 1:23

☐ AMENDED RE

WELL LOCATION AND ACREAGE DEDICATION PLAT

'API Number	'Pool Code	'Pool Name
30-045-29700	72319/71599	Blanco Mesaverde/Basin Dakota
'Property Code	'Property Name	'Well Number
6784	ALLISON UNIT	47M
'OGRID No.	'Operator Name	'Elevation
14538	BURLINGTON RESOURCES OIL & GAS COMPANY	6179'

¹⁰ Surface Location

UL or lot no.	Section	Township	Range	Lot 1st	Feet from the	North/South line	Feet from the	East/West line	County
0	8	32N	6W		1110	SOUTH	1570	EAST	SAN J

¹¹Bottom Hole Location If Different From Surface

UL or lot no.	Section	Township	Range	Lot 101	Feet from the	North/South line	Feet from the	East/West line	County
12		12							

12 Dedicated Acres MV-320 DK-320	13 Joint or Infill	14 Consolidation Code	15 Order No.
--	--------------------	-----------------------	--------------

NO ALLOWABLE WILL BE ASSIGNED TO THIS COMPLETION UNTIL ALL INTERESTS HAVE BEEN CONSOLIDATED OR A NON-STANDARD UNIT HAS BEEN APPROVED BY THE DIVISION

RECEIVED
OCT 21 1998
OIL CON! DIV
DIST. 3

615.12' 4 3 2 5318.28'

OCT 21 1998

OIL CON! DIST. 3

1321.98' 8

NM 04207 FEE FEE

2579.94' 2622.18' 2698.74' 1110' 1570' 2724.48'

FEE NM-04207 NM-04207

17 OPERATOR CERTIFICATION

I hereby certify that the information contained here is true and complete to the best of my knowledge and belief.

Signature/ Peggy Bradfield
 Printed Name Peggy Bradfield
 Title Regulatory Administrator

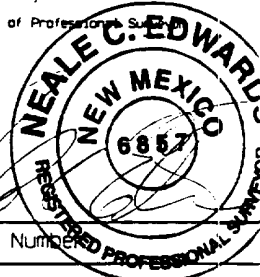
Date _____

18 SURVEYOR CERTIFICATION

I hereby certify that the well location shown on this map was plotted from field notes of actual surveys made by me or under my supervision and that the same is true and correct to the best of my belief.

MAY 22, 1998
Date of Survey

Signature and Seal of Professional Engineer



Certificate Number

OPERATIONS PLAN

Well Name: Allison Unit #47M
Location: 1110' FSL, 1570' FEL Sec 8, T-32-N, R-6-W
San Juan County, NM
Latitude 36° 59.5, Longitude 107° 28.7
Formation: Blanco Mesa Verde/Basin Dakota
Elevation: 6179' GL

<u>Formation Tops:</u>	<u>Top</u>	<u>Bottom</u>	<u>Contents</u>
Surface	San Jose	1910'	
Ojo Alamo	1910'	2024'	aquifer
Kirtland	2024'	2417'	
Fruitland	2417'	2790'	gas
Pictured Cliffs	2790'	3100'	gas
Lewis	3100'	3856'	gas
Intermediate TD	3200'		
Huerfanito Bentonite	3856'	4320'	gas
Chacra	4320'	5101'	
Massive Cliff House	5101'	5109'	gas
Menefee	5109'	5323'	gas
Massive Point Lookout	5323'	5825'	gas
Mancos Shale	5825'	6673'	
Gallup	6673'	7426'	gas
Greenhorn	7426'	7481'	gas
Dakota	7481'		gas
TD (4 1/2" liner)	7731'		

Logging Program:

Cased hole - CBL - TD to 200' above TOC, GR/CNL across MV/Dk

Mud Program:

<u>Interval</u>	<u>Type</u>	<u>Weight</u>	<u>Vis.</u>	<u>Fluid Loss</u>
0- 200'	Spud	8.4-9.0	40-50	no control
200-3200'	LSND	8.4-9.0	30-60	no control
3200-7731'	Gas	n/a	n/a	n/a

Pit levels will be visually monitored to detect gain or loss of fluid control.

Casing Program (as listed, the equivalent, or better):

<u>Hole Size</u>	<u>Depth Interval</u>	<u>Csq. Size</u>	<u>Wt.</u>	<u>Grade</u>
12 1/4"	0' - 200'	9 5/8"	32.3#	WC-50
8 3/4"	0' - 3200'	7"	20.0#	J-55
6 1/4"	3100' - 7731'	4 1/2"	10.5#	J-55

Tubing Program:

0' - 7731' 2 3/8" 4.70# EUE

BOP Specifications, Wellhead and Tests:

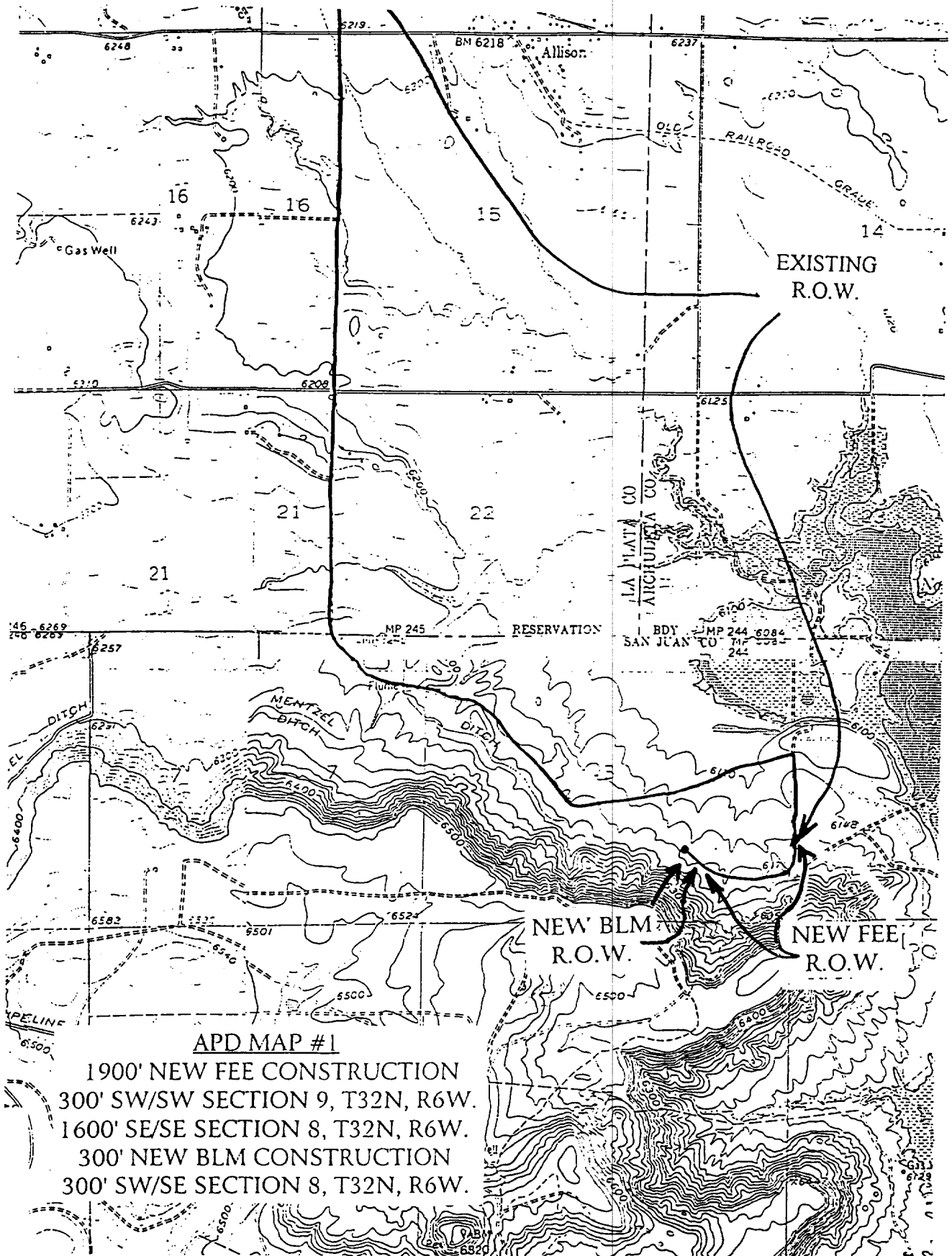
Surface to Intermediate TD -

11" 2000 psi minimum double gate BOP stack (Reference Figure #1).
After nipple-up prior to drilling out surface casing, rams and casing will be tested to 600 psi for 30 minutes.

Intermediate TD to Total Depth -

11" 2000 psi minimum double gate BOP stack (Reference Figure #1).
After nipple-up prior to drilling out intermediate casing, rams and casing will be tested to 1500 psi for 30 minutes.

1110' FSL & 1570' FEL, SECTION 8, T32N, R6W, N.M.P.M.
SAN JUAN COUNTY, NEW MEXICO





NEW MEXICO ENERGY, MINERALS
& NATURAL RESOURCES DEPARTMENT

OIL CONSERVATION DIVISION
2040 South Pacheco Street
Santa Fe, New Mexico 87505
(505) 827-7131

October 14, 1998

Burlington Resources Oil & Gas Company
P. O. Box 4289
Farmington, New Mexico 87499-4289
Attention: Peggy Bradfield

RECEIVED
OCT 19 1998
OIL CON. DIV.
DIST. 3

Administrative Order NSL-4103-A

Dear Ms. Bradfield:

Reference is made to your application submitted to the New Mexico Oil Conservation Division ("Division") on October 7, 1998 for an exception to the well location requirements provided within the "Special Rules and Regulations for the Blanco-Mesaverde Pool/Special Rules and Regulations for the Basin-Dakota Pool," as promulgated by Division Order No. R-10987, for Burlington Resources Oil & Gas Company's ("Burlington") proposed Allison Unit Well No. 47-M to be drilled at an unorthodox infill gas well location in both the Blanco-Mesaverde and Basin-Dakota Pools 1110 feet from the South line and 1570 feet from the East line (Unit O) of Section 8, Township 32 North, Range 6 West, NMPM, San Juan County, New Mexico.

Gas production attributed to the well from both pools is to be dedicated to the previously authorized 320-acre non-standard gas spacing and proration units, both of which comprise the following described area:

San Juan County, New Mexico
TOWNSHIP 32 NORTH, RANGE 6 WEST, NMPM
Section 8: SW/4 NE/4, SE/4 NW/4, SW/4, and W/2 SE/4.

By Division Order No. R-11003, issued in Case No. 11989 dated July 13, 1998, this 320-acre unit was approved for gas production from the Blanco-Mesaverde Pool. By Division Order No. R-2046, issued in Case No. 2327 dated August 14, 1961, as amended by Division Order No. R-2046-A, issued in Case No. 7479 dated March 2, 1982, the same acreage was designated a non-standard gas spacing and proration unit for Basin-Dakota Pool gas production.

The application has been duly filed under the provisions of Rules 104.F and 605.B of the Rules and Regulations of the New Mexico Oil Conservation Division ("Division").

By the authority granted me under the provisions of Division Rule 104.F(2), the above-described unorthodox Basin-Dakota/Blanco-Mesaverde gas well location for the Allison Unit Well No. 47-M is hereby approved. This well and both previously authorized non-standard spacing units will be subject to all existing rules, regulations, policies, and procedures applicable to prorated gas pools in Northwest, New Mexico.

Sincerely,

Lori Wrotenbery
Director

LW/MES/kv

cc: New Mexico Oil Conservation Division - Aztec
U. S. Bureau of Land Management - Farmington
File: Case No. 11989
NSL-4103

BURLINGTON RESOURCES

SAN JUAN DIVISION

Sent Federal Express

Mr. Michael Stogner
New Mexico Oil Conservation Division
2040 South Pacheco
Santa Fe, New Mexico 87505

RECEIVED
OCT 6 1998
OIL CON. DIV.
DIST. 3

Re: Allison Unit #47M
1110'FSL, 1570'FEL Section 8, T-32-N, R-6-W, San Juan County, New Mexico
30-045-not assigned

Dear Mr. Stogner:

Burlington Resources is applying for administrative approval of an unorthodox gas well location for both the Mesa Verde pool and Basin Dakota pool.

This application for the referenced location is at the request of the landowner to avoid Lakeview Heights Subdivision and the irrigated fields, and to avoid the natural lagoon as shown on the attached topographic and aerial maps. The location also avoids archaeological concerns found on the bench. The access route proposed also avoids these same features. The geologist has determined that the referenced location is acceptable (see attached geologic review, type log and maps).

Production from the Blanco Mesa Verde pool and Basin Dakota is to be included in a 320 acre gas spacing and proration unit in Section 8 per Orders #R-2046 and R-11003 attached. Production from the Blanco Mesa Verde and the Basin Dakota is to be dedicated to the Allison Unit #47 (30-045-29526) located at 600' FSL, 790' FWL of Section 8. Allison Unit #47 has received NSL-4103 and is intended to be drilled in 1998.

The following attachments are for your review:

- Application for Permit to Drill.
- Completed C-102 at referenced location.
- Offset operators/owners plat – Burlington is offset operator.
- 7.5 minute topographic map showing the orthodox windows, irrigated fields, lagoon and Lakeview Heights Subdivision; and enlargement of the map to define these features.
- Aerial map of referenced area.
- Geologic review, type log, maps for Dakota and Mesa Verde.
- Orders R-2046 and R-11003

We appreciate your earliest consideration of this application.

Sincerely,



Peggy Bradfield
Regulatory/Compliance Administrator

xc: NMOCD - Aztec District Office
Bureau of Land Management – Farmington

UNITED STATES
DEPARTMENT OF THE INTERIOR
BUREAU OF LAND MANAGEMENT

APPLICATION FOR PERMIT TO DRILL, DEEPEN, OR PLUG BACK

1a. Type of Work DRILL	5. Lease Number NM-04207 Unit Reporting Number
1b. Type of Well GAS	6. If Indian, All. or Tribe
2. Operator BURLINGTON RESOURCES Oil & Gas Company	7. Unit Agreement Name Allison Unit
3. Address & Phone No. of Operator PO Box 4289, Farmington, NM 87499 (505) 326-9700	8. Farm or Lease Name Allison Unit 9. Well Number 47M
4. Location of Well 1110' FSL, 1570' FEL Latitude 36° 59.5, Longitude 107° 28.7	10. Field, Pool, Wildcat Blanco MV/Basin Dk 11. Sec., Twn, Rge, Mer. (NMPM) Sec 8, T-32-N, R-6-W API # -30-045-
14. Distance in Miles from Nearest Town 3 miles to Allison	12. County SJ 13. State NM
15. Distance from Proposed Location to Nearest Property or Lease Line 1110'	
16. Acres in Lease	17. Acres Assigned to Well 320
18. Distance from Proposed Location to Nearest Well, Drig, Compl, or Applied for on this Lease 2000'	
19. Proposed Depth 7731'	20. Rotary or Cable Tools Rotary
21. Elevations (DF, FT, GR, Etc.) 6179' GR	22. Approx. Date Work will Start
23. Proposed Casing and Cementing Program See Operations Plan attached	
24. Authorized by: <u>Sean Spahr</u> Regulatory/Compliance Administrator	<u>6-19-98</u> Date

PERMIT NO. _____

APPROVAL DATE _____

APPROVED BY _____

TITLE _____

DATE _____

Archaeological Report to be submitted

Threatened and Endangered Species Report to be submitted

NOTE: This format is issued in lieu of U.S. BLM Form 3160-3

Title 18 U.S.C. Section 1001, makes it a crime for any person knowingly and willfully to make to any department or agency of the United States any false, fictitious or fraudulent statements or presentations as to any matter within its jurisdiction.

District I
PO Box 1930, Hobbs, NM 88241-1980

District II
PO Drawer 00, Artesia, NM 88211-0719

District III
1000 Rio Brazos Rd., Aztec, NM 87410

District IV
PO Box 2033, Santa Fe, NM 87504-2033

State of New Mexico
Energy, Minerals & Natural Resources Department

OIL CONSERVATION DIVISION
PO Box 2088
Santa Fe, NM 87504-2088

Revised February
Instruct:
Submit to Appropriate Dist
State Lease
Fee Lease

☐ AMENDED

WELL LOCATION AND ACREAGE DEDICATION PLAT

API Number 30-045-		Pool Code 72319/71599	Pool Name Blanco Mesaverde/Basin Dakota
Property Code 6784	Property Name ALLISON UNIT		Well No. 47M
OGRIID No. 14538	Operator Name BURLINGTON RESOURCES OIL & GAS COMPANY		Elevat 6179

10 Surface Location

UL or lot no.	Section	Township	Range	Lot 1/4	Feet from the	North/South line	Feet from the	East/West line	
0	8	32N	6W		1110	SOUTH	1570	EAST	SAN

11 Bottom Hole Location If Different From Surface

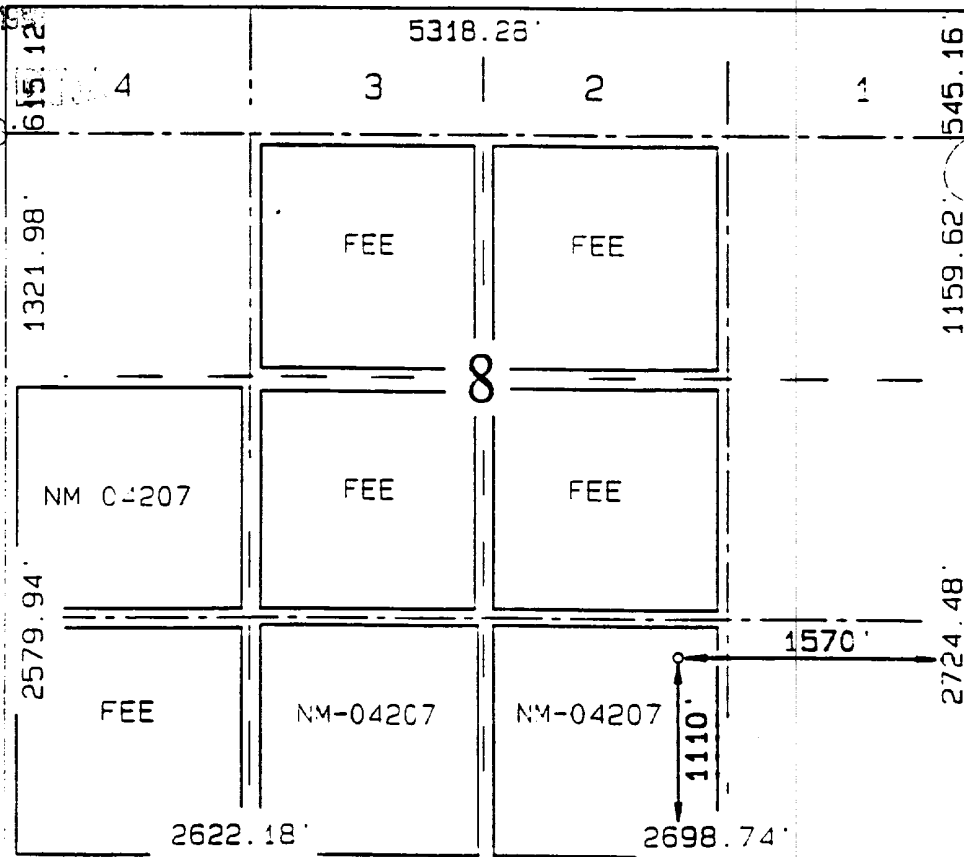
UL or lot no.	Section	Township	Range	Lot 1/4	Feet from the	North/South line	Feet from the	East/West line	

12 Dedicated Acres MV-320 DK-320	13 Joint or Infill	14 Consolidation Code	15 Order No.
--	--------------------	-----------------------	--------------

NO ALLOWABLE WILL BE ASSIGNED TO THIS COMPLETION UNTIL ALL INTERESTS HAVE BEEN CONSIDERED
OR A NON-STANDARD UNIT HAS BEEN APPROVED BY THE DIVISION

RECEIVED
OCT 6 1998

OIL CON.
DIST. 3



17 OPERATOR CERTIFIC

I hereby certify that the information contained herein is true and complete to the best of my knowledge.

Signature/

Peggy Bradfield

Printed Name

Regulatory Adminis

Title

6-19-98

Date

18 SURVEYOR CERTIFIC

I hereby certify that the well location shown was plotted from field notes of actual survey or under my supervision and that the same is correct to the best of my belief.

MAY 22, 1998

Date of Survey

Signature and Seal of Professional Surveyor

NEALE C. EDWARDS

NEW MEXICO

6882

6882

Certificate Number

Professional

OPERATIONS PLAN

Well Name: Allison Unit #47M
Location: 1110' FSL, 1570' FEL Sec 8, T-32-N, R-6-W
San Juan County, NM
Latitude 36° 59.5, Longitude 107° 28.7
Formation: Blanco Mesa Verde/Basin Dakota
Elevation: 6179' GL

<u>Formation Tops:</u>	<u>Top</u>	<u>Bottom</u>	<u>Contents</u>
Surface	San Jose	1910'	
Ojo Alamo	1910'	2024'	aquifer
Kirtland	2024'	2417'	
Fruitland	2417'	2790'	gas
Pictured Cliffs	2790'	3100'	gas
Lewis	3100'	3856'	gas
Intermediate TD	3200'		
Huerfanito Bentonite	3856'	4320'	gas
Chacra	4320'	5101'	
Massive Cliff House	5101'	5109'	gas
Menefee	5109'	5323'	gas
Massive Point Lookout	5323'	5825'	gas
Mancos Shale	5825'	6673'	
Gallup	6673'	7426'	gas
Greenhorn	7426'	7481'	gas
Dakota	7481'		gas
TD (4 1/2" liner)	7731'		

Logging Program:

Cased hole - CBL - TD to 200' above TOC, GR/CNL across MV/Dk

Mud Program:

<u>Interval</u>	<u>Type</u>	<u>Weight</u>	<u>Vis.</u>	<u>Fluid Loss</u>
0- 200'	Spud	8.4-9.0	40-50	no control
200-3200'	LSND	8.4-9.0	30-60	no control
3200-7731'	Gas	n/a	n/a	n/a

Pit levels will be visually monitored to detect gain or loss of fluid control.

Casing Program (as listed, the equivalent, or better):

<u>Hole Size</u>	<u>Depth Interval</u>	<u>Csq. Size</u>	<u>Wt.</u>	<u>Grade</u>
12 1/4"	0' - 200'	9 5/8"	32.3#	WC-50
8 3/4"	0' - 3200'	7"	20.0#	J-55
6 1/4"	3100' - 7731'	4 1/2"	10.5#	J-55

Tubing Program:

0' - 7731' 2 3/8" 4.70# EUE

BOP Specifications, Wellhead and Tests:

Surface to Intermediate TD -

11" 2000 psi minimum double gate BOP stack (Reference Figure #1).
After nipple-up prior to drilling out surface casing, rams and casing will be tested to 600 psi for 30 minutes.

Intermediate TD to Total Depth -

11" 2000 psi minimum double gate BOP stack (Reference Figure #1).
After nipple-up prior to drilling out intermediate casing, rams and casing will be tested to 1500 psi for 30 minutes.

Surface to Total Depth -

2" nominal, 2000 psi minimum choke manifold (Reference Figure #3).

Completion Operations -

7 1/16" 2000 psi double gate BOP stack (Reference Figure #2). After nipple-up prior to completion, pipe rams, casing and liner top will be tested to 2000 psi for 15 minutes.

Wellhead -

9 5/8" x 7" x 2 3/8" x 3000 psi tree assembly.

General -

- Pipe rams will be actuated once each day and blind rams will be actuated once each trip to test proper functioning.
- An upper kelly cock valve with handle available and drill string valves to fit each drill string will be available on the rig floors at all times.
- BOP pit level drill will be conducted weekly for each drilling crew.
- All BOP tests and drills will be recorded in daily drilling reports.
- Blind and pipe rams will be equipped with extension hand wheels.

Cementing:

9 5/8" surface casing - cement with 163 sx Class "B" cement with 1/4# flocele/sx and 2% calcium chloride (188 cu.ft. of slurry, 200% excess to circulate to surface). WOC 8 hrs. Test casing to 600 psi for 30 minutes.

Saw tooth guide shoe on bottom. Bowspring centralizers will be run in accordance with Onshore Order #2.

7" intermediate casing -

Lead w/254 sx Class "B" w/3% metasilicate, 10# gilsonite/sx and 1/2# flocele/sx. Tail w/90 sx 50/50 Class "B" Poz w/2% calcium chloride, 2% gel, 1/2# flocele/sx, 10# gilsonite/sx (842 cu.ft. of slurry, 75% excess to circulate to surface.) WOC minimum of 8 hours before drilling out intermediate casing. If cement does not circulate to surface, a CBL will be run during completion operations to determine TOC. Test casing to 1500 psi for 30 minutes.

Cement nose guide shoe on bottom with float collar spaced on top of shoe joint. Bowspring centralizers spaced every other joint off bottom, to the base of the Ojo Alamo at 2024'. Two turbolating centralizers at the base of the Ojo Alamo at 2024'. Bowspring centralizers spaced every fourth joint from the base of the Ojo Alamo to the base of the surface casing.

4 1/2" Production Liner -

Cement to cover minimum of 100' of 4 1/2" x 7" overlap. Cement with 499 sx 50/50 Class "B" Poz with 2% gel, 1/4# floccule/sx, 3% gilsonite/sx, and 0.4% fluid loss additive (664 cu.ft., 40% excess to cement 4 1/2" x 7" overlap). WOC a minimum of 18 hrs prior to completing.

Cement float shoe on bottom with float collar spaced on top of shoe joint.

Note: To facilitate higher hydraulic stimulation completion work, no liner hanger will be used. Instead, a long string of 4 1/2" casing will be run and cemented with a minimum of 100' of cement overlap between the 4 1/2" x 7" casing strings. After completion of the well, a 4 1/2" CIBP will be set above the last fracturing job to cut and pull the 4 1/2" casing above the 7" casing shoe. The 4 1/2" bridge plug will then be milled and tubing will be run for completion.

Special Drilling Operations (Gas/Mist Drilling):

The following equipment will be operational while gas/mist drilling:

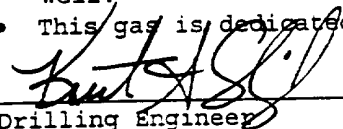
- An anchored blooie line will be utilized to discharge all cuttings and circulating medium to the blow pit a minimum of 100' from the wellhead.
- The blooie line will be equipped with an automatic igniter or pilot light.
- Compressors will be located a minimum of 100' from the wellhead in the opposite direction from the blooie line.
- Engines will have spark arresters or water cooled exhaust.
- Deduster equipment will be utilized.
- The rotating head will be properly lubricated and maintained.
- A float valve will be utilized above the bit.
- Mud circulating equipment, water, and mud materials will be sufficient to maintain control of the well.

Additional Information:

- The Dakota and Mesa Verde formations will be completed and commingled.
- No abnormal temperatures or hazards are anticipated.
- Anticipated pore pressures are as follows:

Fruitland Coal	300 psi
Pictured Cliffs	500 psi
Mesa Verde	700 psi
Dakota	2500 psi

- Sufficient LCM will be added to the mud system to maintain well control, if lost circulation is encountered.
- The west half is dedicated to the Dakota and the Mesa Verde in this well.
- This gas is dedicated.


Drilling Engineer

6/19/98
Date

MERIDIAN OIL INC.
Pipeline Map
T-32-N, R-06-W
San Juan County, New Mexico

Allison Unit #47M
Map 1A

BURLINGTON RESOURCES OIL AND GAS COMPANY

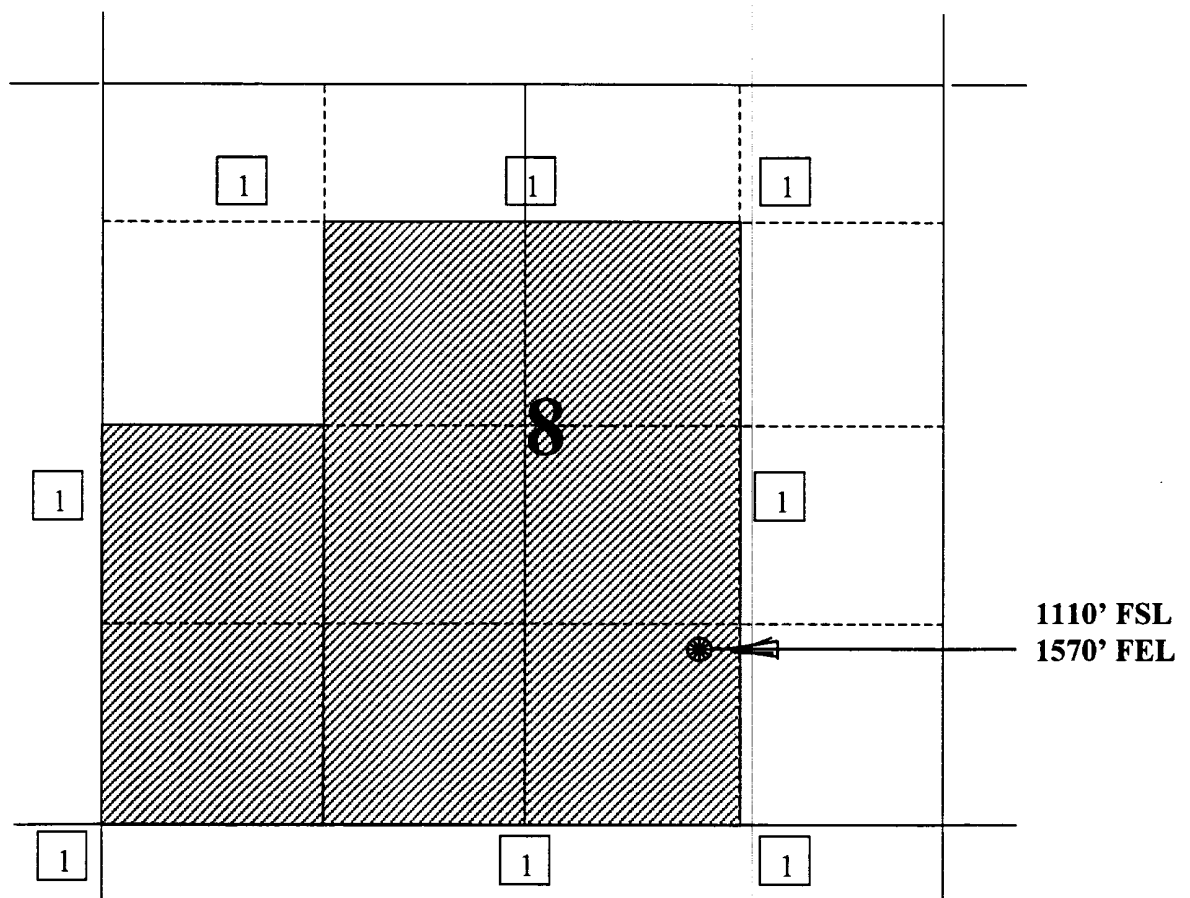
Allison Unit #47M

OFFSET OPERATOR/OWNER PLAT

Nonstandard Location

Mesaverde / Dakota Formations Well

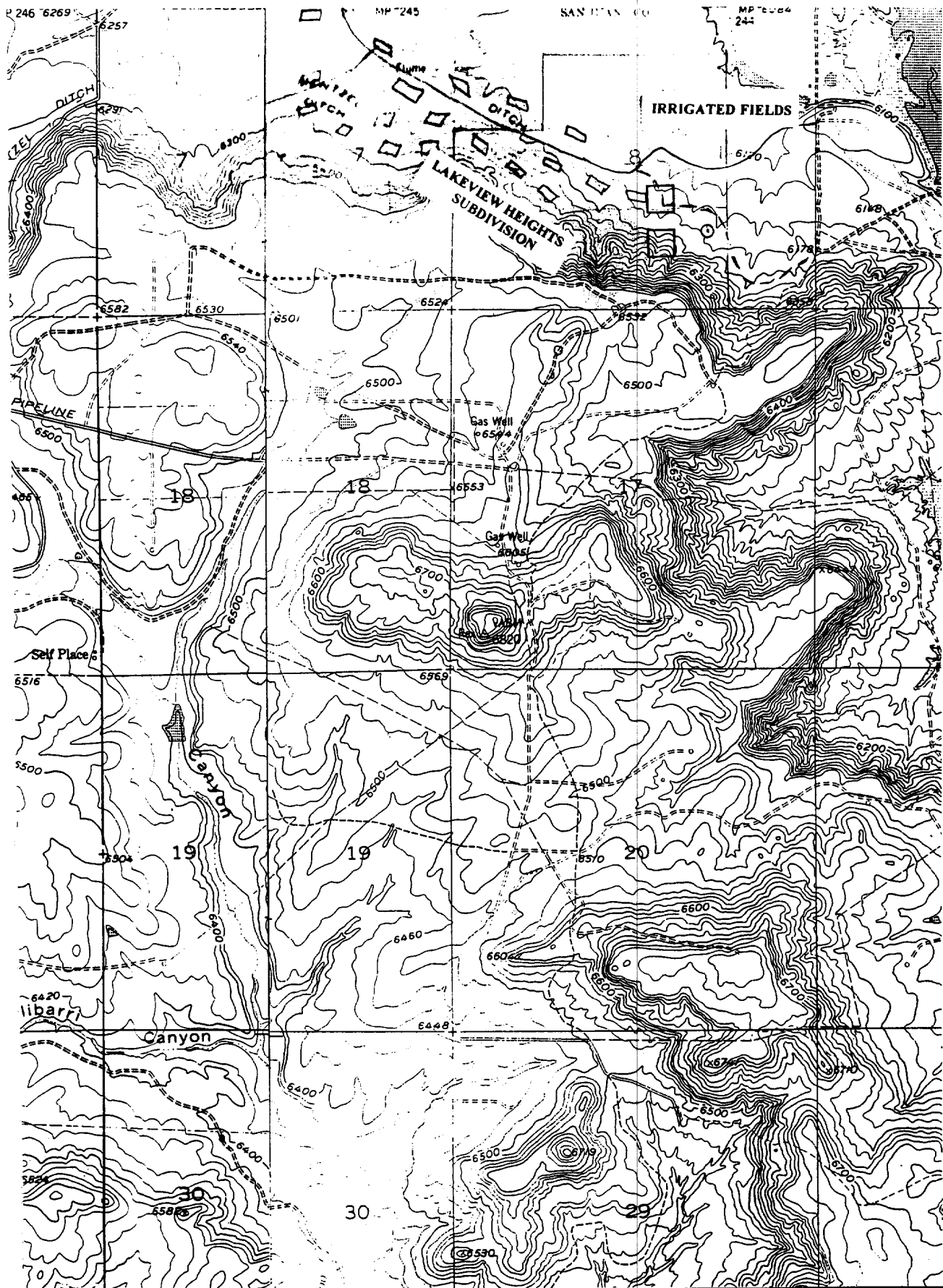
Township 32 North, Range 6 West



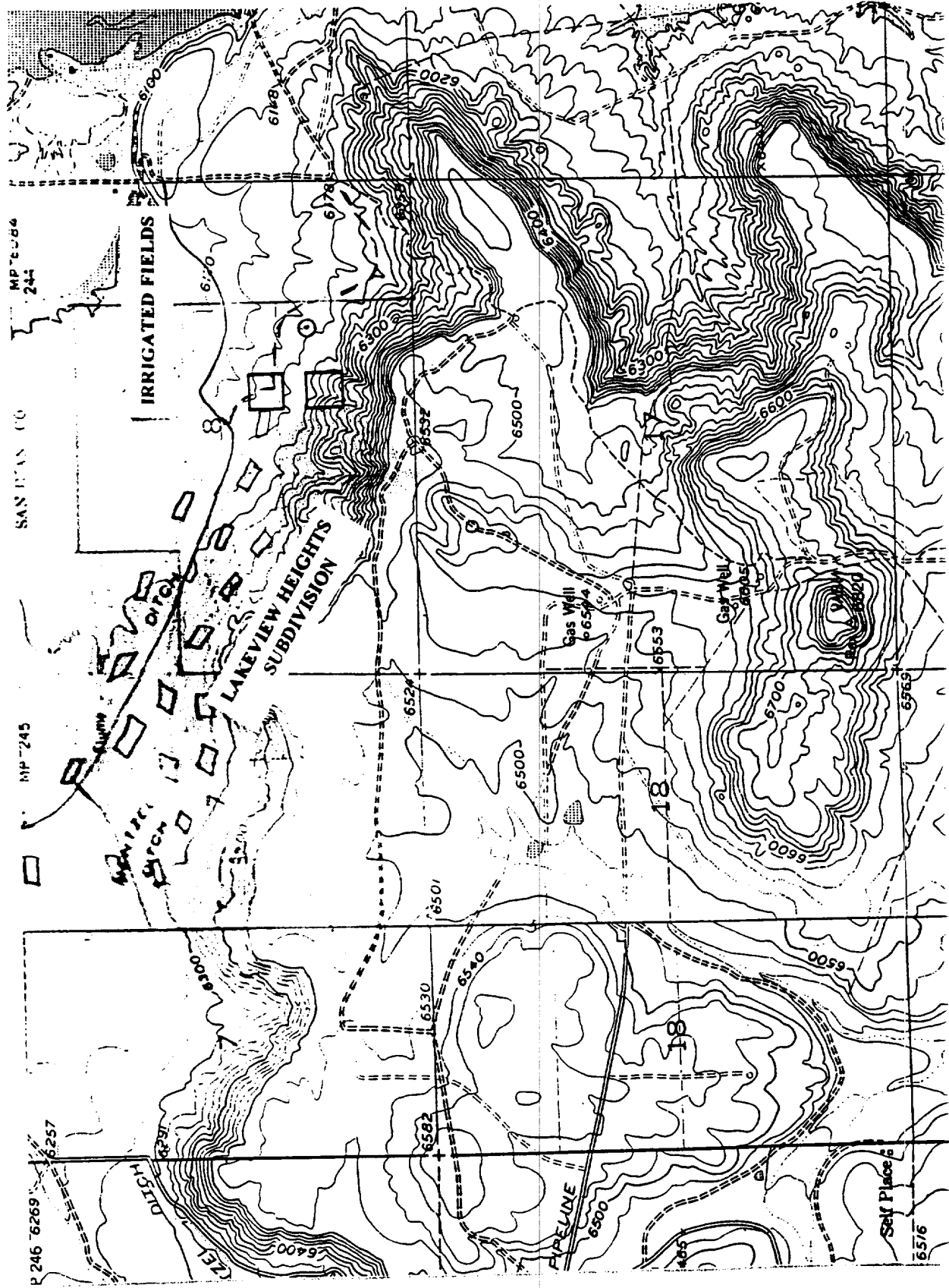
1) Burlington Resources

BURLINGTON RESOURCES OIL & GAS COMPANY ALLISON UNIT #47M

1110' FSL & 1570' FEL, SECTION 8, T32N, R6W, N.M.P.M.
SAN JUAN COUNTY, NEW MEXICO



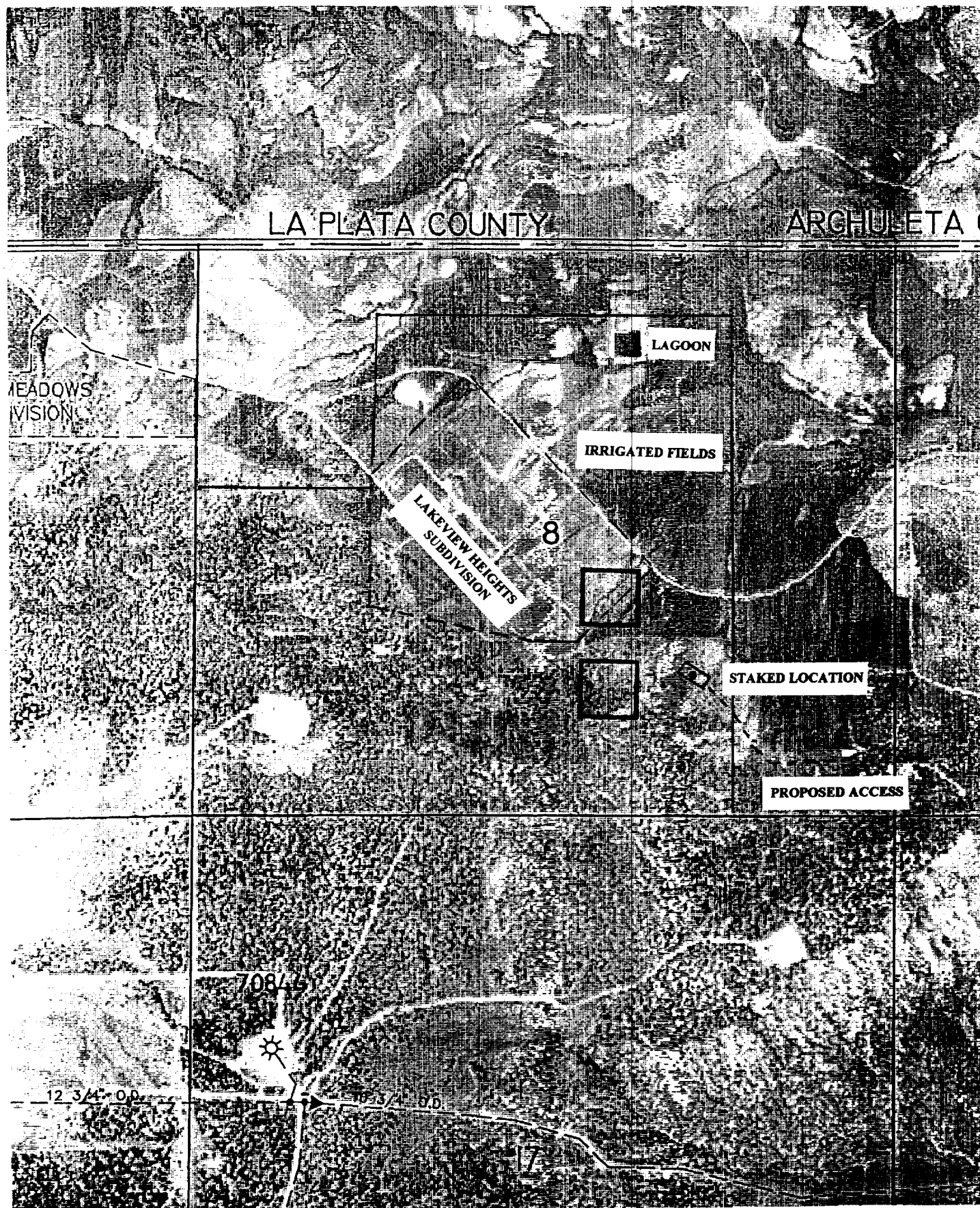
BURLINGTON RESOURCES OIL & GAS COMPANY ALLISON UNIT #47M
1110' FSL & 1570' FEL, SECTION 8, T32N, R6W, N.M.P.M.
SAN JUAN COUNTY, NEW MEXICO



BURLINGTON RESOURCES OIL & GAS COMPANY ALLISON UNIT #47M

1110' FSL & 1570' FEL, SECTION 8, T32N, R6W, N.M.P.M.

SAN JUAN COUNTY, NEW MEXICO



Proposed Allison Unit Well Number 47M
1110' FSL and 1570' FEL
Section 8, T32N, R6W
San Juan County, New Mexico

Basin Dakota Pool

Two principal gas productive intervals are developed in the Dakota Sandstone at the Allison Unit, San Juan County, New Mexico and La Plata County, Colorado. As indicated on the Type Log (Allison Unit #12 located in Section 14, T32N, R7W, San Juan County, New Mexico), these two intervals are termed the Upper Cubero Member and the Lower Cubero Member. The primary objective in the Dakota for the proposed Allison Unit #47M is the Lower Cubero. Additional gas reserves will be recovered from the Upper Cubero at the proposed location. Other lower zones of the Dakota Sandstone also contribute minor gas reserves at the Allison Unit.

A trend of thick reservoir sandstone is developed in the Lower Cubero Member of the Dakota on the north side of the Allison Unit. The Allison Unit #38M, located in Section 17, T32N, R6W, San Juan County, New Mexico, is positioned within this trend just south of the proposed location. The Allison Unit #38M was completed in both the Mesaverde and Dakota in December 1997. The well averaged approximately 1,000 MCFD from the Dakota during its first full month of production, and was producing at a rate of 650 MCFD from the Dakota in June 1998. Ultimate recovery for this well based on its short history is projected to be 2 BCF from the Dakota. Interpretation of the subsurface well control suggests that the proposed location for the Allison Unit #47M should encounter good reservoir development in the Lower Cubero sandstone. Interpretation of the subsurface well control also suggests that the proposed location is geologically comparable with any standard location within the spacing unit.

Blanco Mesaverde Pool

No test has been drilled to Mesaverde depth in Section 8, T32N, R6W, San Juan County, New Mexico. The nearest Mesaverde producer is the Allison Unit #38M, located just to the south in Section 17, T32N, R6W, San Juan County, New Mexico. This well was completed in both the Mesaverde and Dakota in December 1997. The Allison Unit #38M averaged approximately 1,000 MCFD from the Mesaverde during its first full month of production, and was producing at a rate of 750 MCFD from the Mesaverde in June 1998. Ultimate recovery for this well based on its short history is projected to be 2.5 BCF from the Mesaverde. The proposed location is believed geologically comparable with any standard location within the spacing unit.



• *Proposed Location
Allison #47M*

☐ *Spacing Unit
Allison #47M*

BURLINGTON RESOURCES FARMINGTON NM	
ALLISON UNIT MESAVERDE CUM PRODUCTION (12/97) CI = 1 BCF	
DATE 09/11/98	BY J. DEHART
APPROVED BY GEOLOGIST: D. CLARK	DATE 22 SEPT-98

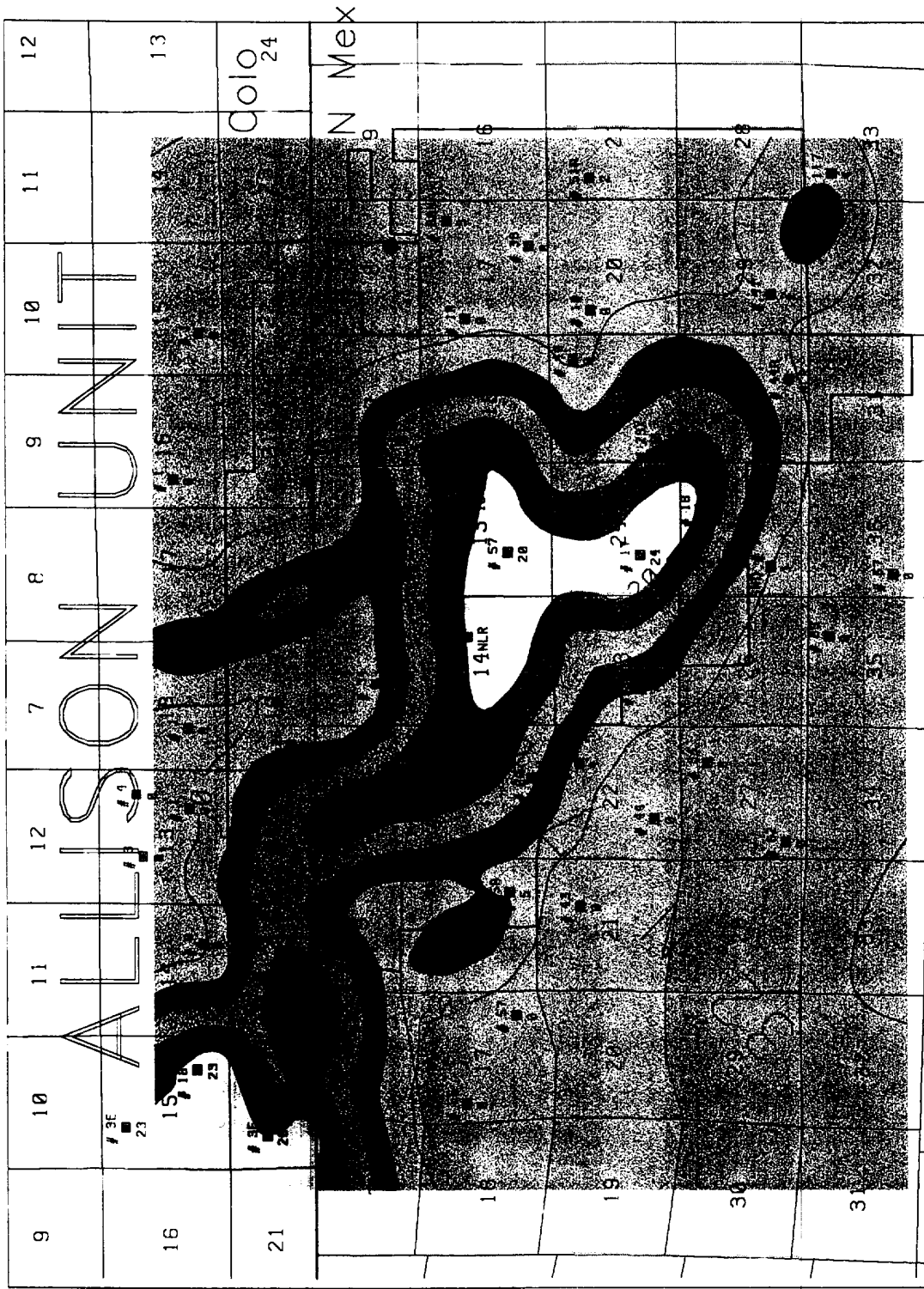


BURLINGTON RESOURCES	
FARMINGTON NM	
ALLISON UNIT	
LOWER CUBERO	
NUMBER OF FEET WITH GR < 60	
CI = 10'	
GEOLOGIST: D. CLARK	
DATE	22-SEPT-88
DRAWN BY	J. DEHART

● Proposed Location
Allison #47M

Spacing Unit
Allison #47M

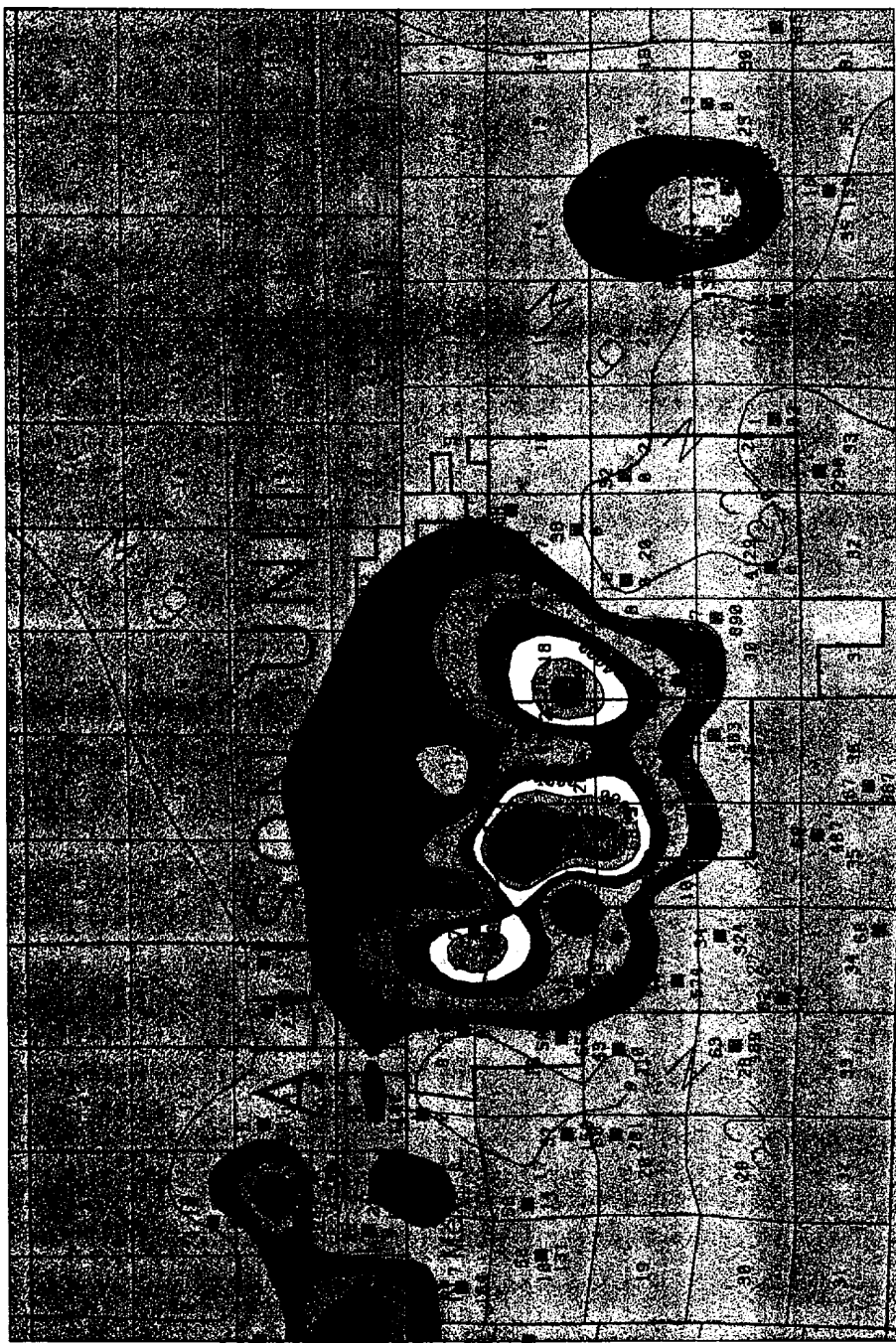




Proposed Location
Allison #47M

Spacing Unit
Allison #47M

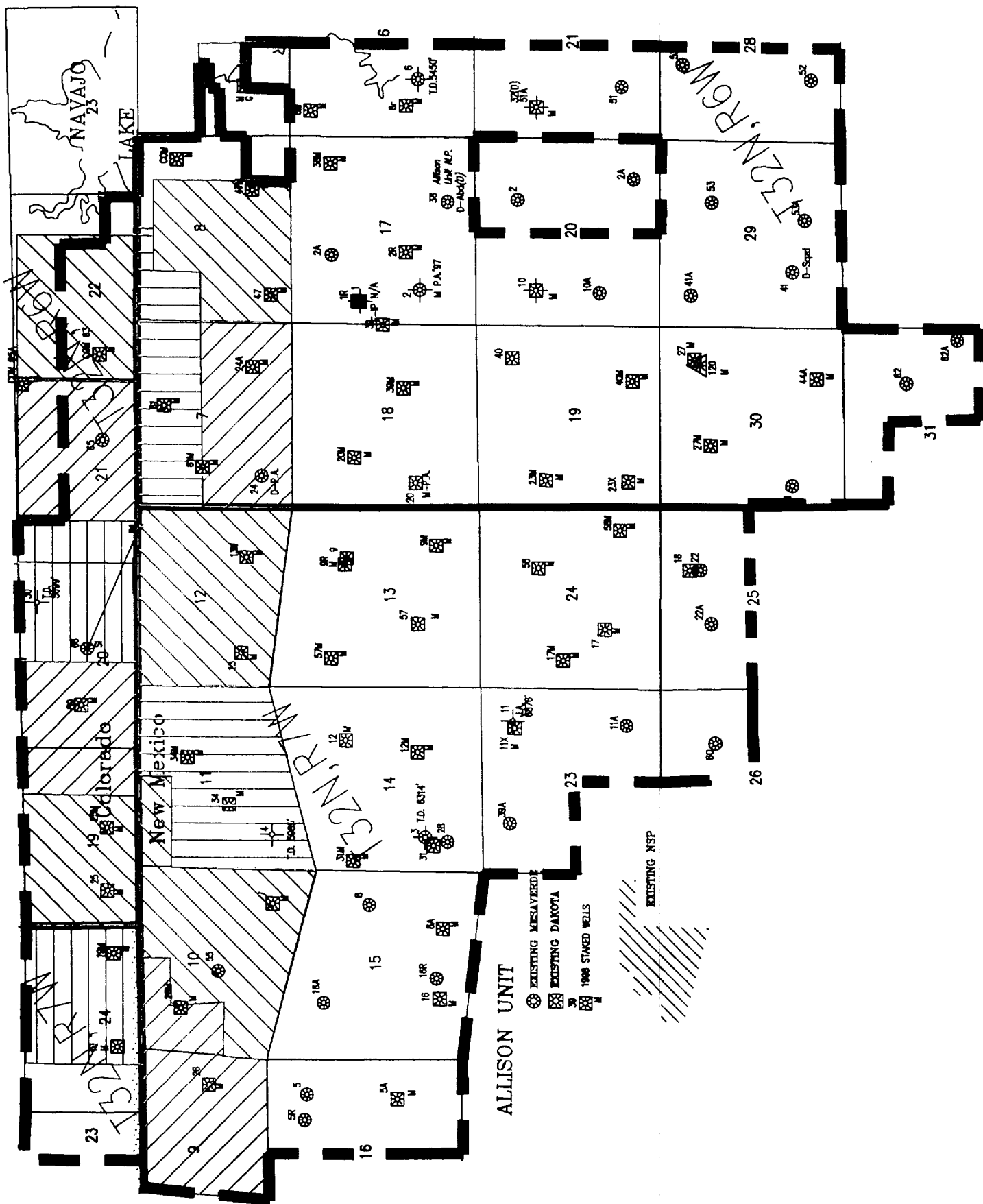
BURLINGTON RESOURCES FARMINGTON NM	
ALLISON UNIT UPPER CUBERO NUMBER OF FEET WITH RT > 100 OHMS C.I. = 5'	
GEOLOGIST: D. CLARK	
J. DEHART	22-SEPT-88



● *Proposed Location*
Allison #47M

☐ *Spacing Unit*
Allison #47M

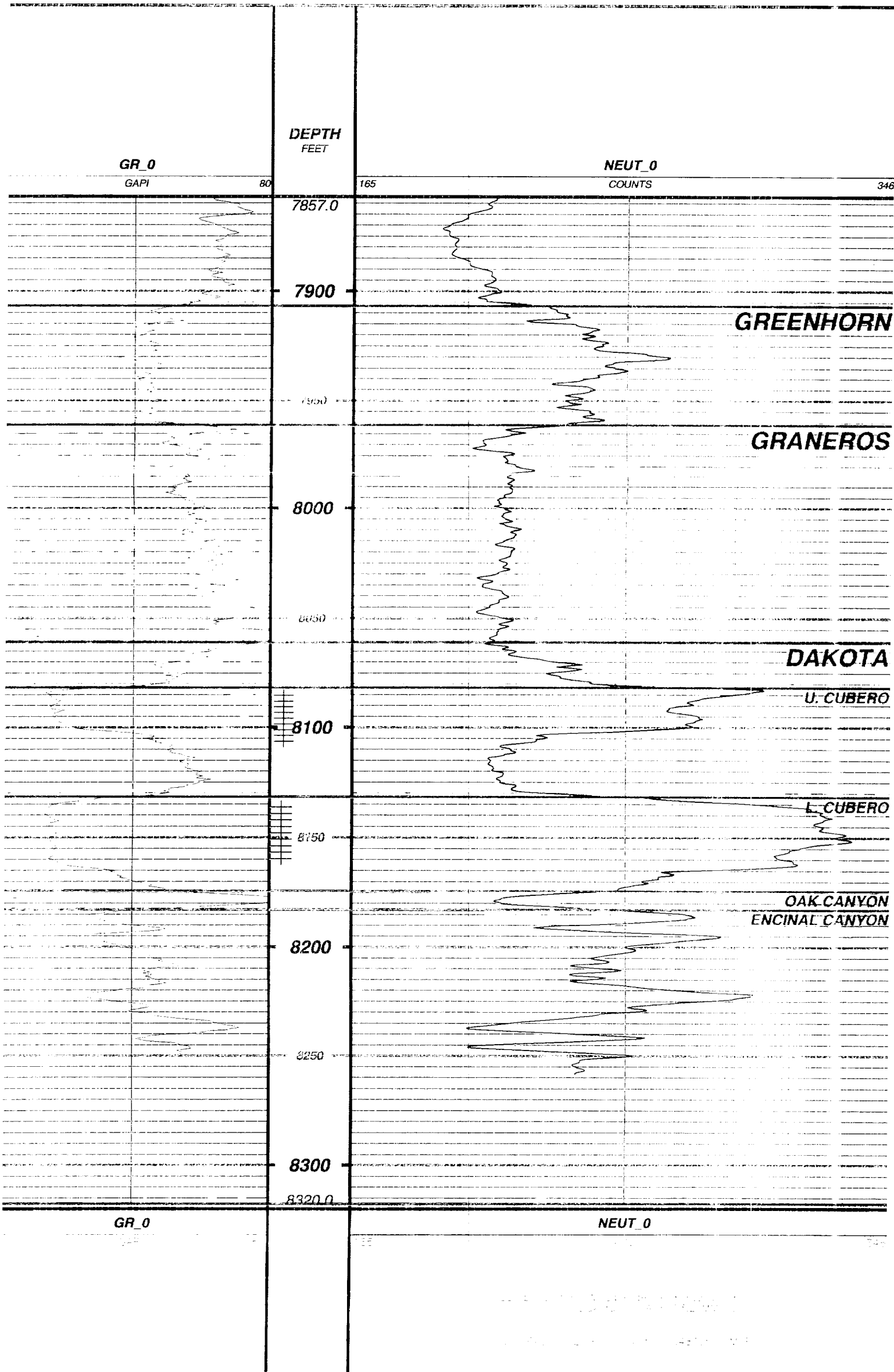
BURLINGTON RESOURCES			
FARMINGTON NM			
ALLISON UNIT			
DAKOTA CUM PRODUCTION (12/97)			
CI = 1 BCF			
DATE	BY	Geologist: D. Clark	DATE
22-Sept-98	J.Doherty		



Type Log
Allison Unit Dakota
Allison Unit #12
San Juan County, NM

TOWNSHIP: 32N
RANGE: 7W
SECTION: 14
SURFACE ELEV: 6645
DRILLED DEPTH: 8320

DATUM FOR ELEV: GL
DATE LOGGED: 11/20/57
VERTICAL SCALE: 1:"1 in: 50 ft"
RANGE: 7857.0-8320.0
DATE PLOTTED: 18-Aug-1998



**STATE OF NEW MEXICO
ENERGY, MINERALS AND NATURAL RESOURCES DEPARTMENT
OIL CONSERVATION DIVISION**

**IN THE MATTER OF THE HEARING
CALLED BY THE OIL CONSERVATION
DIVISION FOR THE PURPOSE OF
CONSIDERING:**

**CASE NO. 11989
Order No. R-11003**

**APPLICATION OF BURLINGTON RESOURCES
OIL & GAS COMPANY FOR APPROVAL OF
FOUR NON-STANDARD GAS SPACING AND
PRORATION UNITS, SAN JUAN COUNTY,
NEW MEXICO.**

ORDER OF THE DIVISION

BY THE DIVISION:

This case came on for hearing at 8:15 a.m. on June 25, 1998, at Santa Fe, New Mexico, before Examiner David R. Catanach.

NOW, on this 13th day of July, 1998, the Division Director, having considered the testimony, the record and the recommendations of the Examiner, and being fully advised,

FINDS THAT:

(1) Due public notice having been given, the Division has jurisdiction of this case and its subject matter.

(2) The applicant, Burlington Resources Oil & Gas Company, seeks approval of four non-standard gas spacing and proration units for Blanco-Mesaverde Gas Pool production in Irregular Section 12, Township 32 North, Range 7 West, NMPM, and Irregular Sections 7 and 8, Township 32 North, Range 6 West, NMPM, San Juan County, New Mexico, described as follows:

TOWNSHIP 32 NORTH, RANGE 7 WEST, NMPM

<u>TRACT</u>	<u>ACREAGE</u>	<u>DESCRIPTION</u>
1	399.0 acres	Section 12: All

CASE NO. 11989
Order No. R-11003
Page -2-

TOWNSHIP 32 NORTH, RANGE 6 WEST, NMPM

<u>TRACT</u>	<u>ACREAGE</u>	<u>DESCRIPTION</u>
2	308.78 acres	Section 7: N/2 Section 8: N/2 NW/4, SW/4 NW/4
3	318.27 acres	Section 7: S/2
4	320.0 acres	Section 8: SW/4 NE/4, SE/4 NW/4, SW/4, W/2 SE/4

(3) This case was styled such that "In the absence of objection this matter will be taken under advisement."

(4) The applicant appeared at the hearing through legal counsel and presented evidence to support its application. No other party appeared at the hearing.

(5) The evidence indicates that:

- a) the proposed non-standard gas proration units are necessitated by a variation in the legal subdivision of the United States Public Lands Survey;
- b) the applicant proposes to develop each of the non-standard gas proration units in the Blanco-Mesaverde Gas Pool; and,
- c) each of the proposed non-standard gas proration units may reasonably be presumed productive of gas from the Blanco-Mesaverde Gas Pool.

(6) According to evidence presented by the applicant, each of the proposed non-standard gas proration units has previously been approved by the Division for use in developing gas reserves in the Basin-Dakota Gas Pool, said approval granted by Division Order No. R-2046 dated August 14, 1961, and has proven to be effective in promoting orderly development in this area.

(7) Each of the proposed non-standard gas proration units are located within the Allison Unit, a Federal exploratory unit currently operated by the applicant.

CASE NO. 11989
Order No. R-11003
Page -3-

(8) No other offset operator and/or interest owner appeared at the hearing in opposition to the application.

(9) Approval of the application will afford the applicant the opportunity to produce its just and equitable share of the gas in the Blanco-Mesaverde Gas Pool, prevent the economic loss caused by the drilling of unnecessary wells, avoid the augmentation of risk arising from the drilling of an excessive number of wells, and otherwise prevent waste and protect correlative rights.

IT IS THEREFORE ORDERED THAT:

(1) The following described non-standard gas spacing and proration units in the Blanco-Mesaverde Gas Pool, San Juan County, New Mexico, are hereby established:

TOWNSHIP 32 NORTH, RANGE 7 WEST, NMPM

<u>TRACT</u>	<u>ACREAGE</u>	<u>DESCRIPTION</u>
1	399.0 acres	Section 12: All

TOWNSHIP 32 NORTH, RANGE 6 WEST, NMPM

<u>TRACT</u>	<u>ACREAGE</u>	<u>DESCRIPTION</u>
2	308.78 acres	Section 7: N/2 Section 8: N/2 NW/4, SW/4 NW/4

3	318.27 acres	Section 7: S/2
---	--------------	----------------

<u>TRACT</u>	<u>ACREAGE</u>	<u>DESCRIPTION</u>
4	320.0 acres	Section 8: SW/4 NE/4, SE/4 NW/4, SW/4, W/2 SE/4

(2) Jurisdiction of this case is retained for the entry of such further orders as the Division may deem necessary.

CASE NO. 11989

Order No. R-11003

Page 4

DONE at Santa Fe, New Mexico, on the day and year hereinabove designated.

**STATE OF NEW MEXICO
OIL CONSERVATION DIVISION**

Lori Wrotenbery
LORI WROTENBERY
Director

S E A L

Non standard Unit

STATE OF NEW MEXICO
ENERGY AND MINERALS DEPARTMENT
OIL CONSERVATION DIVISION

IN THE MATTER OF THE HEARING
CALLED BY THE OIL CONSERVATION
DIVISION FOR THE PURPOSE OF
CONSIDERING:

CASE NO. 7479
Order No. R-2046-A +

R-2046

APPLICATION OF NORTHWEST PIPELINE
CORPORATION FOR AMENDMENT OF ORDER
NO. R-2046, RIO ARriba COUNTY,
NEW MEXICO.

ORDER OF THE DIVISION

BY THE DIVISION:

This cause came on for hearing at 9 a.m. on February 17, 1982, at Santa Fe, New Mexico, before Examiner Richard L. Stamets.

NOW, on this 2nd day of March, 1982, the Division Director, having considered the testimony, the record, and the recommendations of the Examiner, and being fully advised in the premises,

FINDS:

(1) That due public notice having been given as required by law, the Division has jurisdiction of this cause and the subject matter thereof.

(2) That Division Order No. R-2046 established a large number of non-standard proration units for the Basin-Dakota Gas Pool in Rio Arriba County, New Mexico, including the following:

TOWNSHIP 30 NORTH, RANGE 6 WEST, NMPM

<u>Tract</u>	<u>Acreage</u>	<u>Section</u>
A	339.46	1 E/2 (This unit also contains the SE/4 of Section 36, Township 31 North, Range 6 West)
B	319.69	1 W/2

TOWNSHIP 31 NORTH, RANGE 6 WEST, NMPM

<u>Tract</u>	<u>Acreage</u>	<u>Section</u>
I	337.04	25 E/2 36 NE/4
J	339.46	36 A portion of this unit contains acreage in Township 30 North, Range 6 West, described under that township.

(3) That the applicant, Northwest Pipeline Corporation, seeks the amendment of Division Order No. R-2046, to delete the four non-standard gas proration units described in Finding No. (2) above and to create six new non-standard proration units for wells to be drilled in the Basin-Dakota Pool at standard locations.

(4) That the six new proposed non-standard units consist of the following described acreage:

TOWNSHIP 30 NORTH, RANGE 6 WEST, NMPM

<u>Tract</u>	<u>Acreage</u>	<u>Section</u>
1	272.81	1 N/2
2	273.49	1 S/2

TOWNSHIP 31 NORTH, RANGE 6 WEST, NMPM

<u>Tract</u>	<u>Acreage</u>	<u>Section</u>
3	272.16	25 N/2
4	272.32	25 S/2
5	272.56	36 N/2
6	272.88	36 S/2

(5) That the non-standard proration units may reasonably be presumed productive of gas from the Basin-Dakota Gas Pool and that all of the non-standard gas proration units can be efficiently and economically drained and developed by the aforesaid wells.

(6) That approval of the subject application will afford the applicant the opportunity to produce his just and equitable share of the gas in the Basin-Dakota Pool, will prevent the economic loss caused by the drilling of unnecessary wells, avoid the augmentation of risk arising from the drilling of an

-3-

Case No. 7479

Order No. R-2046-A

excessive number of wells, and will otherwise prevent waste and protect correlative rights.

IT IS THEREFORE ORDERED:

(1) That Division Order No. R-2046 is hereby amended by deletion therefrom of the four non-standard proration units described in Finding No. (2) of this order.

(2) That six new non-standard proration units for Basin-Dakota production are hereby created and designated in Rio Arriba County, New Mexico, as follows:

TOWNSHIP 30 NORTH, RANGE 6 WEST, NMPM

<u>Tract</u>	<u>Acreage</u>	<u>Section</u>
1	272.81	1 N/2
2	273.49	1 S/2

TOWNSHIP 31 NORTH, RANGE 6 WEST, NMPM

<u>Tract</u>	<u>Acreage</u>	<u>Section</u>
3	272.16	25 N/2
4	272.32	25 S/2
5	272.56	36 N/2
6	272.88	36 S/2

(2) That jurisdiction of this cause is retained for the entry of such further orders as the Division may deem necessary.

DONE at Santa Fe, New Mexico, on the day and year hereinabove designated.

STATE OF NEW MEXICO
OIL CONSERVATION DIVISION


JOE D. RAMEY,
Director

S E A L

BEFORE THE OIL CONSERVATION COMMISSION
OF THE STATE OF NEW MEXICO

IN THE MATTER OF THE HEARING
CALLED BY THE OIL CONSERVATION
COMMISSION OF NEW MEXICO FOR
THE PURPOSE OF CONSIDERING:

CASE No. 2327
Order No. R-2046

APPLICATION OF THE OIL CONSERVATION
COMMISSION ON ITS OWN MOTION TO CON-
SIDER ESTABLISHING NON-STANDARD GAS
PRORATION UNITS IN THE BASIN-DAKOTA
GAS POOL IN CERTAIN PARTIAL SECTIONS,
SAN JUAN COUNTY, NEW MEXICO.

ORDER OF THE COMMISSION

BY THE COMMISSION:

This cause came on for hearing at 9 o'clock a.m. on June 28, 1961, at Santa Fe, New Mexico, before Daniel S. Nutter, Examiner duly appointed by the Oil Conservation Commission of New Mexico, hereinafter referred to as the "Commission," in accordance with Rule 1214 of the Commission Rules and Regulations.

NOW, on this 14th day of August, 1961, the Commission, a quorum being present, having considered the application, the evidence adduced, and the recommendations of the Examiner, Daniel S. Nutter, and being fully advised in the premises,

FINDS:

(1) That due public notice having been given as required by law, the Commission has jurisdiction of this cause and the subject matter thereof.

(2) That, in order to ensure systematic development and thereby prevent waste and protect correlative rights, the Commission should establish individual proration units in the Basin-Dakota Gas Pool in Townships 29, 30, 31 and 32 North, Ranges 4, 6, 7, 8, 9, 11, 12 and 13 West, NMPM, San Juan County, New Mexico.

(3) That said non-standard proration units are necessitated by irregular sections resulting from survey corrections in the United States Public Lands Survey.

(4) That the acreage contained in each individual proration unit should be based on the latest official surveys and resurvey accepted by the Federal Bureau of Land Management.

IT IS THEREFORE ORDERED:

(1) That the following-described non-standard gas proration units in the Basin-Dakota Gas Pool, San Juan County, New Mexico, are hereby established:

TOWNSHIP 29 NORTH, RANGE 9 WEST

<u>Tract</u>	<u>Acreage</u>	<u>Section</u>	
A	264.00	6	N/2
B	334.14	6	S/2
		7	N/2 N/2 N/2
C	336.66	7	S/2 N/2 N/2, S/2 N/2, N/2 S/2
D	331.68	7	S/2 S/2
		18	N/2 N/2, N/2 S/2 N/2
E	330.98	18	S/2 S/2 N/2, S/2
F	409.24	19	N/2, N/2 S/2
G	407.56	19	S/2 S/2
		30	N/2
H	268.42	30	S/2
I	251.72	31	N/2
J	251.01	31	S/2

TOWNSHIP 29 NORTH, RANGE 13 WEST

<u>Tract</u>	<u>Acreage</u>	<u>Section</u>	
A	356.19	6	W/2
		7	W/2
B	364.60	18	W/2
		19	W/2
C	366.40	30	W/2
		31	W/2

TOWNSHIP 30 NORTH, RANGE 6 WEST

<u>Tract</u>	<u>Acreage</u>	<u>Section</u>	
A	339.46	1	E/2 (This unit also contains the SE/4 of Section 36, Township 31 North, Range 6 West)
B	319.69	1	W/2
C	227.48	12	E/2
D	227.76	13	E/2
E	228.52	24	E/2
F	229.56	25	E/2
G	230.24	36	E/2

TOWNSHIP 30 NORTH, RANGE 7 WEST

<u>Tract</u>	<u>Acreage</u>	<u>Section</u>	
A	296.02	6	A portion of this unit contains acreage in Section 31, Township 31 North, Range 7 West described under that Township.
B	298.90	7	W/2
		18	NW/4
C	307.44	18	SW/4
		19	W/2
D	209.36	30	W/2
E	211.32	31	W/2

TOWNSHIP 30 NORTH, RANGE 9 WEST

<u>Tract</u>	<u>Acreage</u>	<u>Section</u>	
A	299.85	6	W/2
		7	NW/4
B	304.39	7	SW/4
		18	W/2

TOWNSHIP 30 NORTH, RANGE 9 WEST - (CONTINUED)

<u>Tract</u>	<u>Acreage</u>	<u>Section</u>	
C	310.56	19	W/2
		30	NW/4
D	308.56	30	SW/4
		31	W/2

TOWNSHIP 30 NORTH, RANGE 13 WEST

<u>Tract</u>	<u>Acreage</u>	<u>Section</u>	
A	321.99	6	Lots 3, 4, 5, 6, SE/4 NW/4, NE/4 SW/4. (This unit also contains acreage in Section 31, Township 31 North, Range 13 West consisting of Lots 1, 2, 3, 4, E/2 W/2.)
B	324.79	6	Lot 7, SE/4 SW/4
		7	W/2
		18	NW/4
C	314.60 316.83	18	SW/4
		19	W/2
		30	NE/4 NW/4
D	317.13 321.74	30	Lots 8, 9, 10, 13, 14, 15, 16
		31	W/2

TOWNSHIP 31 NORTH, RANGE 4 WEST

<u>Tract</u>	<u>Acreage</u>	<u>Section</u>	
A	331.82	1	E/2
B	327.26	1	W/2
C	326.90	2	E/2
D	326.62	2	W/2
E	326.52	3	E/2

TOWNSHIP 31 NORTH, RANGE 1 WEST - (CONTINUED)

<u>Tract</u>	<u>Acreage</u>	<u>Section</u>	
F	326.60	3	W/2
G	326.57	4	E/2
H	326.43	4	W/2
I	326.49	5	E/2
J	326.69	5	W/2
K	316.40	6	N/2
L	305.44	6	S/2
M	305.67	7	N/2
N	305.89	7	S/2
O	306.11	18	N/2
P	306.33	18	S/2
Q	306.53	19	N/2
R	306.71	19	S/2
S	306.90	30	N/2
T	307.10	30	S/2
U	307.31	31	N/2
V	307.53	31	S/2

TOWNSHIP 31 NORTH, RANGE 1 WEST

<u>Tract</u>	<u>Acreage</u>	<u>Section</u>	
A	360.20	1	All
B	368.60	2	All
C	368.40	3	All
D	368.28	4	All
E	367.96	5	All

TOWNSHIP 31 NORTH, RANGE 5 WEST - (CONTINUED)

<u>Tract</u>	<u>Acreage</u>	<u>Section</u>	
F	336.42	6	All
		7	NW/4
G	323.79	7	SW/4
		18	W/2
		19	NW/4, N/2 SW/4
H	327.63	19	S/2 SW/4
		30	W/2
		31	W/2

TOWNSHIP 31 NORTH, RANGE 6 WEST

<u>Tract</u>	<u>Acreage</u>	<u>Section</u>	
A	319.44	1	All
		12	NE/4 NE/4
B	356.26	2	All
C	353.00	3	All
		4	That portion of Tract 37 lying in Section 4.
D	343.23	4	All, except that portion of Tract 37 lying in this section.
E	350.16	5	All
F	351.89	6	All
G	318.50	12	SE/4, W/2 NE/4, SE/4 NE/4
		13	NE/4
H	335.66	13	SE/4
		24	E/2

TOWNSHIP 31 NORTH, RANGE 6 WEST - (CONTINUED)

<u>Tract</u>	<u>Acreage</u>	<u>Section</u>	
I	337.04	25	E/2
		36	NE/4
J	339.46	36	A portion of this unit contains acreage in Township 30 North, Range 6 West described under that Township.

TOWNSHIP 31 NORTH, RANGE 7 WEST

<u>Tract</u>	<u>Acreage</u>	<u>Section</u>	
A	367.08	1	All
B	310.48	2	Lot 8, E/2, E/2 W/2
C	324.82	2	W/2 SW/4
		3	E/2, SE/4 SW/4
D	318.57	3	Lot 7, NE/4 SW/4, W/2 W/2
		4	E/2 E/2, SW/4 SE/4
E	323.15	4	Lot 6, NW/4 SE/4, W/2
		5	Lot 5
F	321.66	5	Lots 6, 7, 8, E/2 SW/4, SE/4
G	319.16	5	Tract No. 53, Lot 9
		6	Lots 8, 9, 10, 11, NE/4 SW/4, N/2 SE/4
H	324.39	5	SW/4 SW/4
		6	Lots 12, 14, 15, S/2 SE/4
		7	Lot 5, N/2 NE/4, SE/4 NE/4
I	317.23	7	Lots 6, 7, SW/4 NE/4, N/2 SE/4. All of Tract 54 lying in Sections 6 and 7.
J	325.68	7	Lots 8 and 9, SE/4 SE/4, that portion of Tract 55 lying in this section.

TOWNSHIP 31 NORTH, RANGE 7 WEST - (CONTINUED)

<u>Tract</u>	<u>Acreage</u>	<u>Section</u>	
		18	Lots 5, 6, 7, NE/4 NE/4, S/2 NE/4, that portion of Tract 55 lying in this section.
K	321.61	18	Lots 8, 9, 10, SE/4 NW/4, E/2 SW/4 SE/4
L	259.82	19	Lots 5, 6, 7, 8, E/2 W/2
		30	Lot 5, NE/4 NW/4
M	250.65	30	Lots 6, 9, 10, SE/4 NW/4, E/2 SW/4
		31	Lots 7, 8, E/2 NW/4
N	296.02	31	Lots 11, 12, E/2 SW/4. The balance of this Tract lies in Section 6, Township 30 North, Range 7 West and consists of Lots 10, 11, 12, 17, 18, 19, NW/4 SE/4, SW/4 NE/4, and the portion of Tract 40 lying in the SW/4 SE/4 of that section.

TOWNSHIP 31 NORTH, RANGE 13 WEST

<u>Tract</u>	<u>Acreage</u>	<u>Section</u>	
A	322.36	6	W/2
		7	NW/4, N/2 SW/4
B	315.59	7	S/2 SW/4
		18	W/2
		19	Lots 9, 16, E/2 NW/4
C	329.75	19	Lot 17, E/2 SW/4, SE/4 NW/4
		30	W/2
D	321.99	31	A portion of this unit contains acreage in Township 30 North, Range 13 West described under that Township.

TOWNSHIP 32 NORTH, RANGE 5 WEST

<u>Tract</u>	<u>Acreage</u>	<u>Section</u>	
A	353.24	12	W/2, E/2 SW/4
B	354.65	12	NW/4, W/2 SW/4
		11	N/2 NE/4, SE/4 NE/4, E/2 SE/4
C	336.52	11	NW/4, SW/4 NE/4, E/2 SW/4, W/2 SE/4
		10	NE/4 NE/4
D	339.10	11	W/2 SW/4
		10	NW/4 NE/4, S/2 NE/4, SE/4
E	278.70	10	W/2
F	339.54	9	E/2 E/2, SW/4 NE/4, W/2 SE/4, E/2 SW/4
G	338.84	9	NW/4 NE/4, NW/4, W/2 SW/4
		8	SE/4 NE/4, E/2 SE/4
H	319.74	8	N/2 NE/4, SW/4 NE/4, SE/4 NW/4, SW/4 SW/4, E/2 SW/4, W/2 SE/4
I	316.14	8	N/2 NW/4, SW/4 NW/4, NW/4 SW/4
		7	All. The SE/4 SE/4 of Section 12, Township 32 North, Range 6 West is also contained in this unit.
J	355.25	18	All
		19	All
K	345.59	30	All
		31	All

TOWNSHIP 32 NORTH, RANGE 6 WEST

<u>Tract</u>	<u>Acreage</u>	<u>Section</u>	
A	336.31	12	NE/4, E/2 NW/4, NE/4 SW/4, N/2 SE/4, SW/4 SE/4
B	356.82	12	SE/4 SW/4, W/2 W/2

TOWNSHIP 32 NORTH, RANGE 6 WEST - (CONTINUED)

<u>Tract</u>	<u>Acreage</u>	<u>Section</u>	
		11	E/2 E/2, SW/4 SE/4
C	334.45	11	W/2 NE/4, NW/4, N/2 SW/4, SE/4 SW/4, NW/4 SE/4
D	338.25	10	E/2 E/2, SW/4 NE/4, W/2 SE/4, SE/4 SW/4
E	337.75	10	NW/4 NE/4, NW/4, N/2 SW/4, SW/4 SW/4
		9	E/2 SE/4
F	317.60	9	N/2, W/2 SE/4
G	317.51	9	SW/4
		8	E/2 E/2, NW/4 NE/4
✓ H	320.00	8	SW/4 NE/4, SE/4 NW/4, SW/4, W/2 SE/4
I	308.78	8	N/2 NW/4, SW/4 NW/4
		7	N/2
J	318.27	7	S/2
K	318.39	31	N/2 N/2, S/2 NE/4, N/2 SE/4
L	315.12	31	S/2 NW/4, SW/4, S/2 SE/4

TOWNSHIP 32 NORTH, RANGE 7 WEST

<u>Tract</u>	<u>Acreage</u>	<u>Section</u>	
A	293.10	7	Lots 2, 3, 4, SW/4, W/2 SE/4
B	298.38	7	E/2 E/2
		8	W/2
C	298.33	8	W/2
		9	W/2 W/2
→ D	376.88	9	E/2 W/2, E/2
		10	Lots 3, 4, NW/4 SW/4

TOWNSHIP 32 NORTH, RANGE 7 WEST - (CONTINUED)

<u>Tract</u>	<u>Acreage</u>	<u>Section</u>	
E	357.84	10	Lots 1, 2, NE/4 SW/4, S/2 SW/4, SE/4
		11	Lots 3, 4
F	359.20	11	Lots 1, 2, S/2
G	399.00	12	All

TOWNSHIP 32 NORTH, RANGE 8 WEST

<u>Tract</u>	<u>Acreage</u>	<u>Section</u>	
A	312.63	7	Lots 1, 2, 3, 4, N/2 S/2, S/2 SE/4
		8	Lot 4, NW/4 SW/4
B	323.88	8	Lots 1, 2, 3, NE/4 SW/4, S/2 SW/4, SE/4
C	329.16	9	Lots 2, 3, 4, SE/4 SE/4, W/2 SE/4, SW/4
D	311.79	9	Lot 1, NE/4 SE/4
		10	Lot 2, W/2, NW/4 SE/4
E	317.34	10	E/2 E/2, SW/4 SE/4
		11	W/2 W/2, E/2 SW/4
F	328.17	11	Lots 1, 2, 3, SE/4
		12	W/2 W/2
G	305.18	12	E/2 W/2, E/2
H	312.56	7	S/2 SW/4
		18	W/2
		19	W/2 NW/4
I	316.35	19	E/2 NW/4, SW/4
		30	NW/4, NW/4 SW/4
J	316.70	30	NE/4 SW/4, S/2 SW/4
		31	W/2

-12-
CASE No. 2327
Order No. R-2046

TOWNSHIP 32 NORTH, RANGE 11 WEST

<u>Tract</u>	<u>Acreage</u>	<u>Section</u>	
A	332.27	7	All
B	327.80	8	W/2
		17	W/2 W/2
C	328.20	8	E/2
		17	E/2 E/2
D	320.00	17	E/2 W/2, W/2 E/2
E	336.40	9	All
F	335.60	10	All
G	334.00	11	All
H	333.60	12	All

TOWNSHIP 32 NORTH, RANGE 12 WEST

<u>Tract</u>	<u>Acreage</u>	<u>Section</u>	
A	335.38	7	All
B	309.43	8	All
C	280.38	9	All
D	326.68	10	All
E	336.40	11	All
F	336.00	12	All

TOWNSHIP 32 NORTH, RANGE 13 WEST

<u>Tract</u>	<u>Acreage</u>	<u>Section</u>	
A	363.83	7	All
		8	W/2, W/2 E/2
B	339.80	8	E/2 E/2
		9	All
		10	SW/4 SW/4

TOWNSHIP 32 NORTH, RANGE 13 WEST - (CONTINUED)

<u>Tract</u>	<u>Acreage</u>	<u>Section</u>	
C	336.95	10	Lot 8, E/2 W/2, E/2
		11	Lot 6, W/2
D	345.89	11	Lot 5, S/2 SE/4
		12	All
E	325.32	18	Lot 13, N/2, NW/4 SE/4
F	321.40	18	NE/4 SE/4, S/2 S/2
		19	N/2 N/2, SE/4 NE/4
G	320.48	19	Lots 8, 13, 14, SW/4 NE/4, SE/4
H	335.02	30	Lot 13, NW/4 SE/4, N/2
I	325.85	30	Lot 14, NE/4 SE/4, S/2 SE/4
		31	Lot 6, SE/4 NE/4, N/2 NE/4
J	328.45	31	Lot 7, SW/4 NE/4, S/2

(2) That the acreage contained in each of the above-described proration units shall be based on the latest official surveys and resurveys accepted by the Federal Bureau of Land Management, and, in the event further official surveys are made in any subject Township, the acreage in each affected proration unit shall conform to the change.

(3) That jurisdiction of this cause is retained for the entry of such further orders as the Commission may deem necessary.

DONE at Santa Fe, New Mexico, on the day and year hereinabove designated.

STATE OF NEW MEXICO
OIL CONSERVATION COMMISSION

EDWIN L. MECHEM, Chairman

E. S. WALKER, Member

E A L

A. L. PORTER, Jr., Member & Secretary