

UNITED STATES  
DEPARTMENT OF THE INTERIOR  
BUREAU OF LAND MANAGEMENT

APPLICATION FOR PERMIT TO DRILL OR DEEPEN

1. TYPE OF WORK  
DRILL ☒ DEEPEN ☐ FARMINGTON, NM

2. TYPE OF WELL  
OIL WELL ☐ GAS WELL ☒ OTHER ☐ SINGLE ZONE ☒ MULTIPLE ZONE ☐

3. NAME OF OPERATOR  
Phillips Petroleum Company

4. ADDRESS AND TELEPHONE NO.  
5525 Highway 64, NBU 3004, Farmington, NM 87401 505-599-3454

5. LOCATION OF WELL (Report location clearly and in accordance with any State requirements. \*)  
At surface  
Unit M, 1060' FSL & 1011' FWL  
At proposed prod. zone  
Same as above

6. DISTANCE IN MILES AND DIRECTION FROM NEAREST TOWN OR POST OFFICE\*  
@ 16 miles from Aztec, NM

7. DISTANCE FROM PROPOSED\* LOCATION TO NEAREST PROPERTY OR LEASE LINE, FT.  
(Also to nearest drlg. unit line, if any) 1011'

8. NO. OF ACRES IN LEASE  
1560 acres

9. NO. OF ACRES ASSIGNED TO THIS WELL  
317.51 W/2

10. DISTANCE FROM PROPOSED LOCATION\* TO NEAREST WELL, DRILLING, COMPLETED, OR APPLIED FOR, ON THIS LEASE, FT.

11. PROPOSED DEPTH  
3552'

12. ROTARY OR CABLE TOOLS  
Rotary

13. ELEVATIONS (Show whether DF, RT, GR, etc.)  
unprepared ground level 6737'

14. APPROX. DATE WORK WILL START\*  
2nd Qtr 1999

PROPOSED CASING AND CEMENTING PROGRAM				
SIZE OF HOLE	GRADE SIZE OF CASING	WEIGHT PER FOOT	SETTING DEPTH	QUANTITY OF CEMENT
12-1/4"	9-5/8"	36#, J/K-55	350'	185 sx (204 cf) C1 H
8-3/4"	7"	20#, J/K-55	3162'	L-370 sx (777 cf) 35/65 C1 H POZ
6-1/4"	5-1/2" liner	15.5#	3142' - 3552'	T-100 sx (120 cf) C1 H
				**

\*\* The 6-1/4" interval from the 7" casing shoe to the base of the coal may be underreamed to 9-1/2".

See the drilling prognosis for more details on the 5-1/2" liner.

See attached for BOP equipment, mud program, and cathodic protection.

This APD & pipeline DO NOT qualify for the APD/ROW process due to the length of the pipeline.

IN ABOVE SPACE DESCRIBE PROPOSED PROGRAM: If proposal is to deepen, give data on present productive zone and proposed new productive zone. If proposal is to drill or deepen directionally, give pertinent data on subsurface locations and measured and true vertical depths. Give blowout preventer program, if any.

24. SIGNED Patsy Clugston TITLE Regulatory Assistant DATE 12-17-98

(This space for Federal or State office use)

PERMIT NO. \_\_\_\_\_ APPROVAL DATE \_\_\_\_\_

Application approval does not warrant or certify that the applicant holds legal or equitable title to those rights in the subject lease which would entitle the applicant to conduct operations thereon.

CONDITIONS OF APPROVAL, IF ANY:

APPROVED BY /s/ Duane W. Spencer TITLE Team Lead, Petroleum Management DATE FEB 23 1999

\*See Instructions On Reverse Side

U.S.C. Section 1001, makes it a crime for any person knowingly and willfully to make to any department or agency of the United States any false, fictitious or fraudulent statements or representations as to any matter within its jurisdiction.

NMOCD

District I  
PO Box 1980, Hobbs, NM 88241-1980  
District II  
PO Drawer D0, Artesia, NM 88211-0719  
District III  
1000 Rio Brazos Rd., Aztec, NM 87410  
District IV  
PO Box 2088, Santa Fe, NM 87504-2088

State of New Mexico  
Energy, Minerals & Natural Resources Department

RECEIVED  
OIL CONSERVATION DIVISION  
PO Box 2088  
Santa Fe, NM 87504-2088  
36 DEC 17 PM 4:04

Form C-102

Revised February 21, 1994

Instructions on back  
Submit to Appropriate District Office  
State Lease - 4 Copies  
Fee Lease - 3 Copies

☐ AMENDED REPORT

WELL LOCATION AND ACREAGE DEDICATION PLAT

<sup>1</sup> API Number 30-045-29760	<sup>2</sup> Pool Code 71629	<sup>3</sup> Pool Name Basin Fruitland Coal
<sup>4</sup> Property Code 24581	<sup>5</sup> Property Name SAN JUAN 32 FEDERAL 23	<sup>6</sup> Well Number NO.2
<sup>7</sup> OGRID No. 017654	<sup>8</sup> Operator Name PHILLIPS PETROLEUM CO.	<sup>9</sup> Elevation 6737

<sup>10</sup> Surface Location

UL or lot no. M	Section 23	Township 32N	Range 9W	Lot Idn	Feet from the 1060	North/South line SOUTH	Feet from the 1011	East/West line WEST	County SAN JUAN
--------------------	---------------	-----------------	-------------	---------	-----------------------	---------------------------	-----------------------	------------------------	--------------------

<sup>11</sup> Bottom Hole Location If Different From Surface

UL or lot no.	Section	Township	Range	Lot Idn	Feet from the	North/South line	Feet from the	East/West line	County
---------------	---------	----------	-------	---------	---------------	------------------	---------------	----------------	--------

<sup>12</sup> Dedicated Acres 317.51	<sup>13</sup> Joint or Infill N	<sup>14</sup> Consolidation Code	<sup>15</sup> Order No.
---	------------------------------------	----------------------------------	-------------------------

NO ALLOWABLE WILL BE ASSIGNED TO THIS COMPLETION UNTIL ALL INTERESTS HAVE BEEN CONSOLIDATED  
OR A NON-STANDARD UNIT HAS BEEN APPROVED BY THE DIVISION

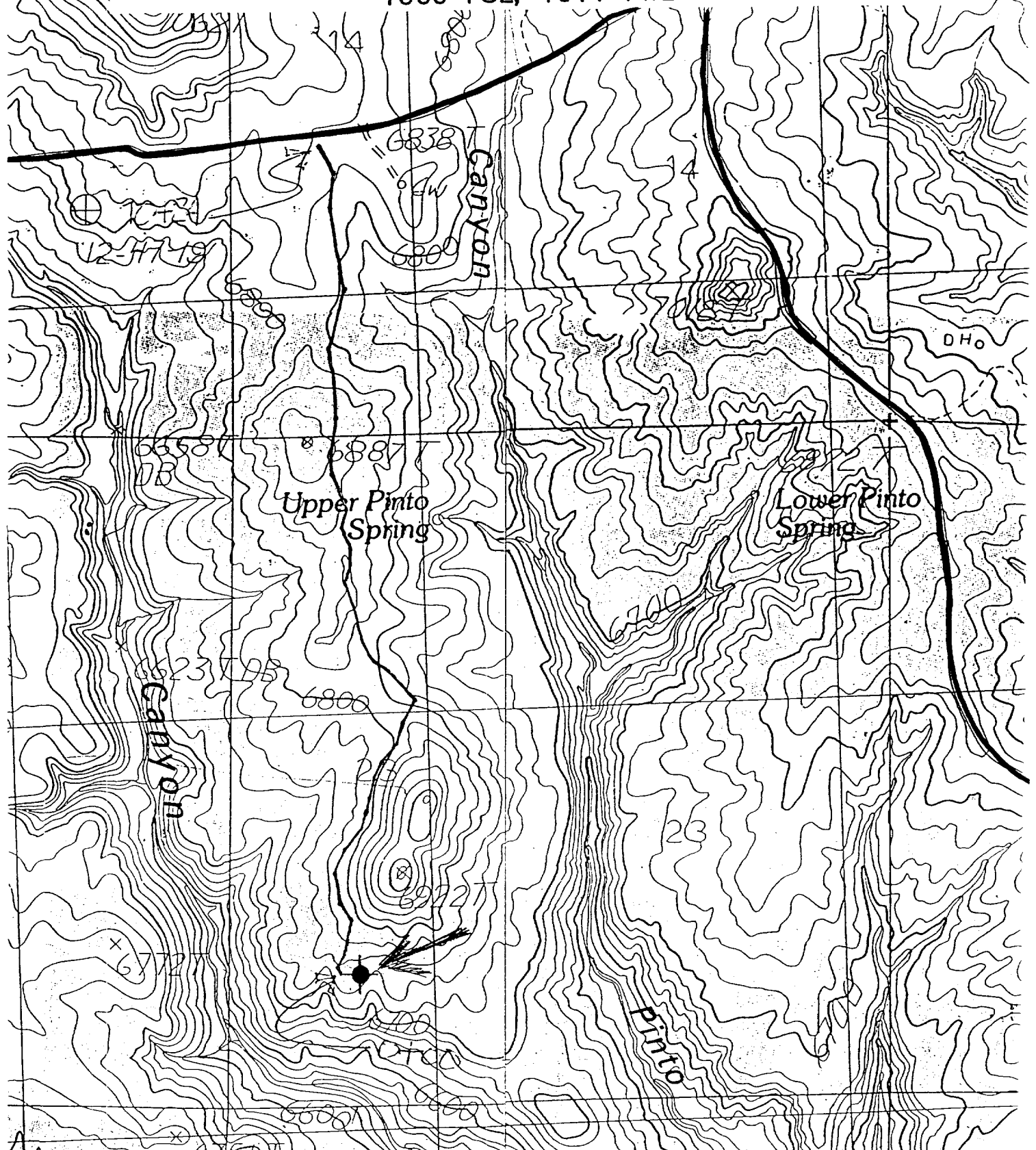
<div><p>16</p><p>Fed. SF-079341</p><p>N 00-14-34 E 2644.6'</p><p>1011'</p><p>1060'</p><p>S 88-37-34 W 2626.50'</p></div>	<div><p>RECEIVED FEB 25 1998 OIL CON. DIV. DIST. 3</p></div>	<div><p><sup>17</sup> OPERATOR CERTIFICATION</p><p>I hereby certify that the information contained herein is true and complete to the best of my knowledge and belief</p><p>Signature Richard A. Allred</p><p>Printed Name Richard A. Allred</p><p>Title Production Superintendent</p><p>Date 12-14-98</p></div>
		<div><p><sup>18</sup> SURVEYOR CERTIFICATION</p><p>I hereby certify that the well location shown on this plat was plotted from field notes of actual surveys made by me or under my supervision, and that the same is true and correct to the best of my belief.</p><p>NOVEMBER 7, 1996</p><p>Date of Survey</p><p>Signature and Seal of Professional Surveyor</p><p>8894</p><p>Certificate Number</p></div>

FD.BC.  
B.L.M. 1966

FD.BC.  
B.L.M. 1966



**PHILLIPS PETROLEUM**  
**PROPOSED WELL LOCATION AND ACCESS ROAD**  
**SAN JUAN 32 FEDERAL 23 NO.2**  
SW/4 SEC.23, T-32-N, R-9-W, N.M.P.M.,  
SAN JUAN COUNTY, NEW MEXICO  
1060 FSL, 1011 FWL



AT NEBO QUADRAN UNITED STATES  
MEXICO-COLORADO COMENT OF THE INTERIOR  
E SERIES (TOPOGAFEOLOGICAL SURVEY

gas line

with our H2O line in trench

PPCo's proposed route  
new water line for wells in this area.

