

UNITED STATES  
DEPARTMENT OF THE INTERIOR  
BUREAU OF LAND MANAGEMENT

APPLICATION FOR PERMIT TO DRILL, DEEPEN, OR PLUG BACK

1a. Type of Work  
DRILL

5. Lease Number  
NM-0606  
Unit Reporting Number

1b. Type of Well  
GAS

6. If Indian, All. or Tribe

2. Operator  
**BURLINGTON RESOURCES** Oil & Gas Company

7. Unit Agreement Name

3. Address & Phone No. of Operator  
PO Box 4289, Farmington, NM 87499  
(505) 326-9700

8. Farm or Lease Name  
Atlantic A  
Well Number  
11R

4. Location of Well  
1840' FNL, 1110' FWL  
Latitude 36° 52.3 , Longitude 107° 54.6

10. Field, Pool, Wildcat  
Blanco Pictured Cliffs

11. Sec., Twn, Rge, Mer. (NMPM)  
Sec. 29, T-31-N, R-10-W  
API # 30-045-29822

14. Distance in Miles from Nearest Town  
4 miles to Aztec

12. County  
San Juan

13. State  
NM

15. Distance from Proposed Location to Nearest Property or Lease Line  
1110'

16. Acres in Lease

17. Acres Assigned to Well  
164.44

18. Distance from Proposed Location to Nearest Well, Drlg, Compl, or Applied for on this Lease  
500'

19. Proposed Depth  
2823'

This action is subject to technical and procedural review pursuant to 43 CFR 3165.3 and appeal pursuant to 43 CFR 3165.4.

20. Rotary or Cable Tools  
Rotary

21. Elevations (DF, FT, GR, Etc.)  
5945' GR

22. Approx. Date Work will Start

23. Proposed Casing and Cementing Program  
See Operations Plan attached

DRILLING OPERATIONS AUTHORIZED ARE SUBJECT TO COMPLIANCE WITH ATTACHED "GENERAL REQUIREMENTS"

24. Authorized by: [Signature]  
Regulatory/Compliance Administrator

1-28-99  
Date

PERMIT NO.

APPROVAL DATE

APPROVED BY

/S/ Duane W. Spencer

TITLE

Team Lead, Petroleum Management

DATE

Archaeological Report to be submitted

Threatened and Endangered Species Report to be submitted

NOTE: This format is issued in lieu of U.S. BLM Form 3160-3

Title 18 U.S.C. Section 1001, makes it a crime for any person knowingly and willfully to make to any department or agency of the United States any false, fictitious or fraudulent statements or presentations as to any matter within its jurisdiction.

District I  
PO Box 1980, Hobbs, NM 88241-1960

District II  
PO Drawer 00, Artesia, NM 88211-0719

District III  
1000 Rio Brazos Rd., Aztec, NM 87410

District IV  
PO Box 2088, Santa Fe, NM 87504-2088

State of New Mexico  
Energy, Minerals & Natural Resources Department

OIL CONSERVATION DIVISION  
PO Box 2088  
Santa Fe, NM 87504-2088

Form C-102  
Revised February 21, 1994  
Instructions on back  
Submit to Appropriate District Office  
State Lease - 4 Copies  
Fee Lease - 3 Copies

30 FEB - 3 PM 2:01 ☐ AMENDED REPORT

WELL LOCATION AND ACREAGE DEDICATION PLAT

|                                    |   |                            |   |
|------------------------------------|---|----------------------------|---|
| *API Number<br><b>30-045-29822</b> |   | *Pool Code<br><b>72359</b> | *Pool Name<br><b>Blanco Pictured Cliffs</b> |
| *Property Code<br><b>6800</b>      | *Property Name<br><b>ATLANTIC A</b>                                 |                            | *Well Number<br><b>11R</b>                  |
| *GRID No.<br><b>14538</b>          | *Operator Name<br><b>BURLINGTON RESOURCES OIL &amp; GAS COMPANY</b> |                            | *Elevation<br><b>5945'</b>                  |

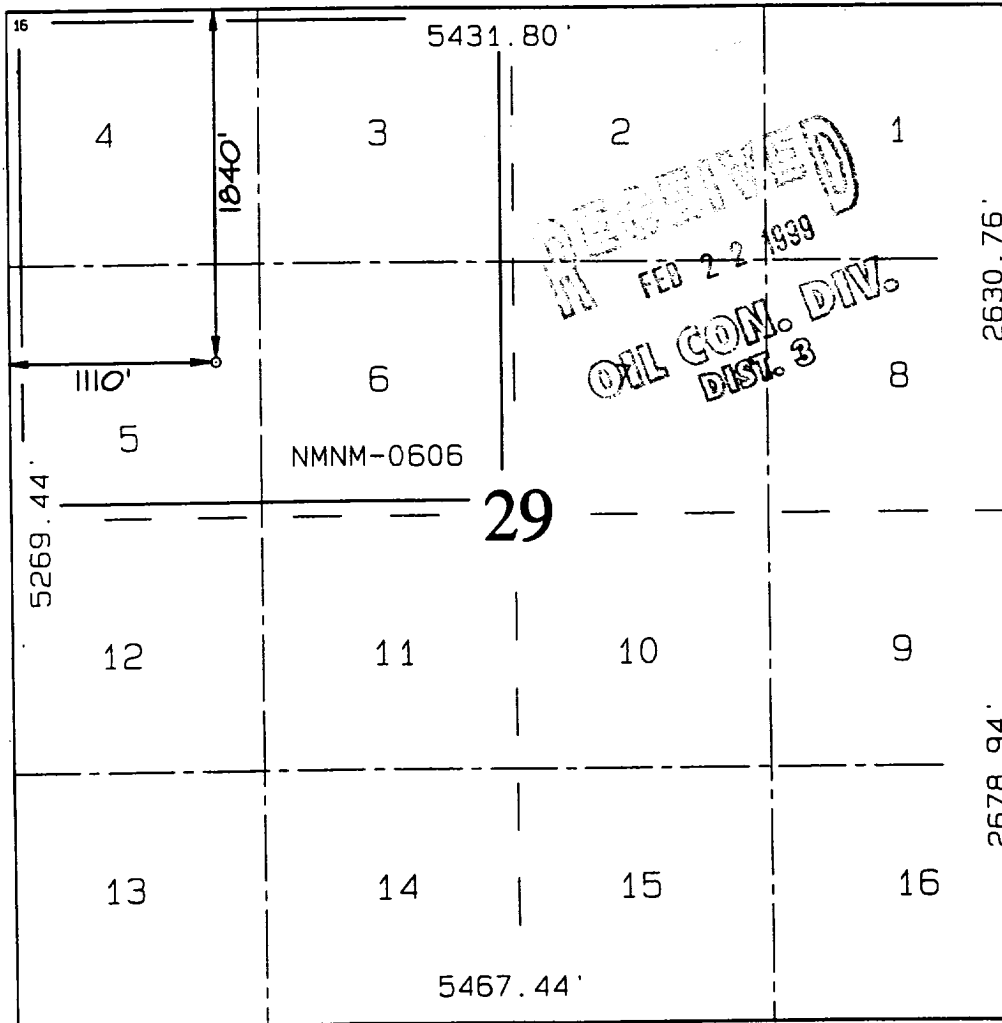
<sup>10</sup> Surface Location

| UL or lot no. | Section | Township | Range | Lot Idn | Feet from the | North/South line | Feet from the | East/West line | County   |
|---------------|---------|----------|-------|---------|---------------|------------------|---------------|----------------|----------|
| E             | 29      | 31N      | 10W   |         | 1840          | NORTH            | 1110          | WEST           | SAN JUAN |

<sup>11</sup> Bottom Hole Location If Different From Surface

| UL or lot no.                                     | Section | Township                      | Range | Lot Idn                          | Feet from the | North/South line        | Feet from the | East/West line | County |
|---|---------|-------------------------------|-------|----------------------------------|---------------|-------------------------|---------------|----------------|--------|
|   |         |                               |       |                                  |               |                         |               |                |        |
| <sup>12</sup> Dedicated Acres<br><b>NW/164.44</b> |         | <sup>13</sup> Joint or Infill |       | <sup>14</sup> Consolidation Code |               | <sup>15</sup> Order No. |               |                |        |

NO ALLOWABLE WILL BE ASSIGNED TO THIS COMPLETION UNTIL ALL INTERESTS HAVE BEEN CONSOLIDATED OR A NON-STANDARD UNIT HAS BEEN APPROVED BY THE DIVISION



<sup>17</sup> OPERATOR CERTIFICATION  
I hereby certify that the information contained herein is true and complete to the best of my knowledge and belief

*Peggy Bradfield*  
Signature  
**Peggy Bradfield**  
Printed Name  
**Regulatory Administrator**  
Title  
**1-28-99**  
Date

<sup>18</sup> SURVEYOR CERTIFICATION  
I hereby certify that the well location shown on this plat was plotted from field notes of actual surveys made by me or under my supervision, and that the same is true and correct to the best of my belief.

**AUGUST 26, 1998**  
Date of Survey  
Signature and Seal of Professional Surveyor  
**NEALE O. EDWARDS**  
**NEW MEXICO**  
**6857**  
Certificate No. **1000**

OPERATIONS PLAN

**Well Name:** Atlantic A #11R  
**Location:** 1840' FNL, 1110' FWL, Section 29, T-31-N, R-10-W  
 San Juan County, New Mexico  
 Latitude 36° 52.3, Longitude 107° 54.6  
**Formation:** Blanco Pictured Cliffs  
**Elevation:** 5945' GR

| Formation:         | Top          | Bottom | Contents |
|--------------------|--------------|--------|----------|
| Surface            | Nacimiento   | 1267'  | aquifer  |
| Ojo Alamo          | 1267'        | 1325'  |          |
| Kirtland           | 1325'        | 2270'  |          |
| Fruitland          | 2270'        | 2623'  | gas      |
| Pictured Cliffs    | 2623'        |        | gas      |
| <b>Total Depth</b> | <b>2823'</b> |        |          |

**Logging Program:** Cased hole - GR/CCL

**Mud Program:**

| Interval  | Type          | Weight  | Vis.  | Fluid Loss |
|-----------|---------------|---------|-------|------------|
| 0- 120'   | Spud          | 8.4-9.0 | 40-50 | no control |
| 120-2823' | Non-dispersed | 8.4-9.5 | 30-60 | no control |

**Casing Program (as listed, equivalent, or better):**

| Hole Size | Depth Interval | Csq. Size | Wt.   | Grade |
|-----------|----------------|-----------|-------|-------|
| 8 3/4"    | 0 - 120'       | 7"        | 20.0# | J-55  |
| 6 1/4"    | 0 - 2823'      | 2 7/8"    | 6.5   | J-55  |

**Tubing Program:**

None

**Float Equipment:** 7" surface casing - saw tooth guide shoe.  
 Centralizers will be run in accordance with Onshore Order #2.

2 7/8" production casing - float shoe on bottom. Three centralizers run every other joint above shoe. Four centralizers run every 3rd joint to the base of the Ojo Alamo @ 1325'. Two turbolizing type centralizers - one below and one into the base of the Ojo Alamo @ 1325'. Standard centralizers thereafter every fourth joint up to the base of the surface pipe.

**Wellhead Equipment:** 7" x 2 7/8" x 11" 2000 psi screw on independent wellhead.

BURLINGTON RESOURCES OIL & GAS COMPANY ATLANTIC A #11R

1840' FNL & 1110' FNL, SECTION 29, T31N, R10W, N.M.P.M.  
SAN JUAN COUNTY, NEW MEXICO

