

UNITED STATES
DEPARTMENT OF THE INTERIOR
BUREAU OF LAND MANAGEMENT

Submit 8 FOR Tribal
Interest, 7 for BLM*
(Other Instructions on
reverse side)

FORM APPROVED
Budget Bureau No. 1004-0136
Expires: February 28, 1995

APPLICATION FOR PERMIT TO DRILL OR DEEPEN

1a. Type of Work

DRILL ☒

DEEPEN ☐

1b. TYPE OF WELL

OIL WELL ☐

GAS WELL ☒

OTHER ☐

Single ☒

Multiple ☐

Zone

Zone

2. NAME OF OPERATOR

Cross Timbers Operating Company

3. ADDRESS AND TELEPHONE NO.

6001 Highway 64 Farmington, NM 87401 915-682-8873 Mark G. Gosh

4. LOCATION OF WELL (Report location clearly and in accordance with any State requirements.)

At Surface:

450' FSL - 500' FWL

At proposed prod. zone>

14. DISTANCE IN MILES AND DIRECTIONS FROM NEAREST TOWN OR POST OFFICE

Approximately 6.3 miles to La Plata New Mexico. Please refer to Surface Use Program for further details.

15. DISTANCE FROM PROPOSED* LOCATION TO NEAREST PROPERTY OR LEASE LINE, FT. (Also to nearest drlg. Unit line, if any.)

450'

16. NO. OF ACRES IN LEASE

Approval of this agreement does not warrant or certify that the operator thereof and other holders of operating rights hold legal or equitable title to those rights in the subject lease which are committed hereto...

19. DISTANCE FROM PROPOSED* LOCATION TO NEAREST WELL, DRILLING, COMPLETED OR APPLIED FOR, ON THIS LEASE, FT.

450' FSL

2700'

17. NO. OF ACRES ASSIGNED TO THIS WELL

20. ROTARY OR CABLE TOOLS

Rotary

21. ELEVATIONS (Show whether DF, RT, GR, etc.)

6010' G.L.

Venting / Flaring approved for 30 days per NTL-4A

22. APPROX. DATE WORK WILL START*

12/98

23. PROPOSED CASING AND CEMENTING PROGRAM

SIZE OF HOLE	GRADE, SIZE OF CASING	WEIGHT PER FOOT	SETTING DEPTH	QUANTITY OF CEMENT
8-3/4"	7"// J-55	20#	300'	75 sx Surface
6-1/4"	4-1/2"// J-55	10.5#	2700'	525 sx Surface

Surface 7", 20#, J-55, STC casing at 300'.

75 sx Class "B" cement w/ 2 % CaCl₂ & 1/4 pps Celloflake (15.6 ppg, 1.19 cu.ft./sx, & 5.19 gal/sx wtr.).

Production 4-1/2", 10.5#, J-55, STC casing at 2,700' Lead

525 sx of 50:50 Pozmix/Class "H" cement w/ 6% Gel and

1/4 pps Celloflake (13.6 ppg, 1.34 cu.ft./sx)

Tail 100 sx of Class "H" cement w/ 0.3% FL-52, & 0.5% CD-32 (16.2 ppg, 1.09 cu.ft./sx)

Remarks: Use 20% excess over volume calculated from open hole logs to bring cement to the surface.

IN ABOVE SPACE DESCRIBE PROPOSED PROGRAM: If proposal is to deepen, give data on present productive zone and proposed new productive zone. If proposal is to drill or deepen directionally, give pertinent data on subsurface locations and measured and true and vertical depths. Give blowout preventer program, if any.

24.

SIGNED:

Gary L. Markestad, P.E. VP Production

DATE: 12/21/98

(This space for Federal or State office use)

Permit Number:

Approval Date:

Application approval does not warrant or certify that the applicant holds legal or equitable title to those rights in the subject lease which would entitle the applicant to conduct operations thereon.

CONDITIONS OF APPROVAL, IF ANY

SEE ATTACHED
CONDITIONS OF APPROVAL

APPROVED FOR A PERIOD
NOT TO EXCEED 1 YEAR.

APPROVED BY

Ilyse K. Auringer

TITLE

MINERALS STAFF CHIEF

DATE

MAR 1 1999

Title 18 U.S.C. Section 1001, makes it a crime for any person knowingly and willfully to make to any department or agency of the United States any false, fictitious or fraudulent statements or representations as to any matter within its jurisdiction.

NSL & RA of J&T #4(e)

NMOCD

District I
PO Box 1980, Hobbs, NM 88241-1980

District II
PO Drawer DD, Artesia, NM 88211-0719

District III
1000 Rio Brazos Rd., Aztec, NM 87410

District IV
PO Box 2088, Santa Fe, NM 87504-2088

State of New Mexico
Energy, Minerals & Natural Resources Department

OIL CONSERVATION DIVISION
PO Box 2088
Santa Fe, NM 87504-2088

Form C-102
Revised February 21, 1994
Instructions on back
Submit to Appropriate District Office
State Lease - 4 Copies
Fee Lease - 3 Copies

☐ AMENDED REPORT

WELL LOCATION AND ACREAGE DEDICATION PLAT

*API Number 30-045-29867		*Pool Code 86720	*Pool Name UTE DOME DAKOTA
*Property Code 22846	*Property Name UTE MOUNTAIN TRIBAL J		*Well Number 6
*GRID No. 167067	*Operator Name CROSS TIMBERS OPERATING COMPANY		*Elevation 6010'

¹⁰ Surface Location

UL or lot no.	Section	Township	Range	Lot Idn	Feet from the	North/South line	Feet from the	East/West line	County
M	1	31N	14W		450	SOUTH	500	WEST	SAN JUAN

¹¹ Bottom Hole Location If Different From Surface

UL or lot no.	Section	Township	Range	Lot Idn	Feet from the	North/South line	Feet from the	East/West line	County
*Dedicated Acres 160		*Joint or Infill		*Consolidation Code		*Order No.			

NO ALLOWABLE WILL BE ASSIGNED TO THIS COMPLETION UNTIL ALL INTERESTS HAVE BEEN CONSOLIDATED OR A NON-STANDARD UNIT HAS BEEN APPROVED BY THE DIVISION

16	2640.00'	1320.00'	1740.42'	OPERATOR CERTIFICATION I hereby certify that the information contained herein is true and complete to the best of my knowledge and belief.		
1323.96'	4	3	2	1	RECEIVED MAR - 5 1999 OIL CON. DIV. DIST. 3	Signature <i>Gary L. Markestad</i>
1320.00'						Printed Name Gary L. Markestad
						Title Vice-President / Production
						Date 12/21/95
						SURVEYOR CERTIFICATION I hereby certify that the well location shown on this plat was plotted from field notes of actual surveys made by me or under my supervision, and that the same is true and correct to the best of my belief.
						OCTOBER 22, 1998 Date of Survey
						Signature and Seal of the Surveyor <i>Neale C. Edwards</i>
						NEALE C. EDWARDS NEW MEXICO 6857
						Certificate No. 6857
2640.00'	1320.00'	1684.32'				

J#4
J#1
51
32P

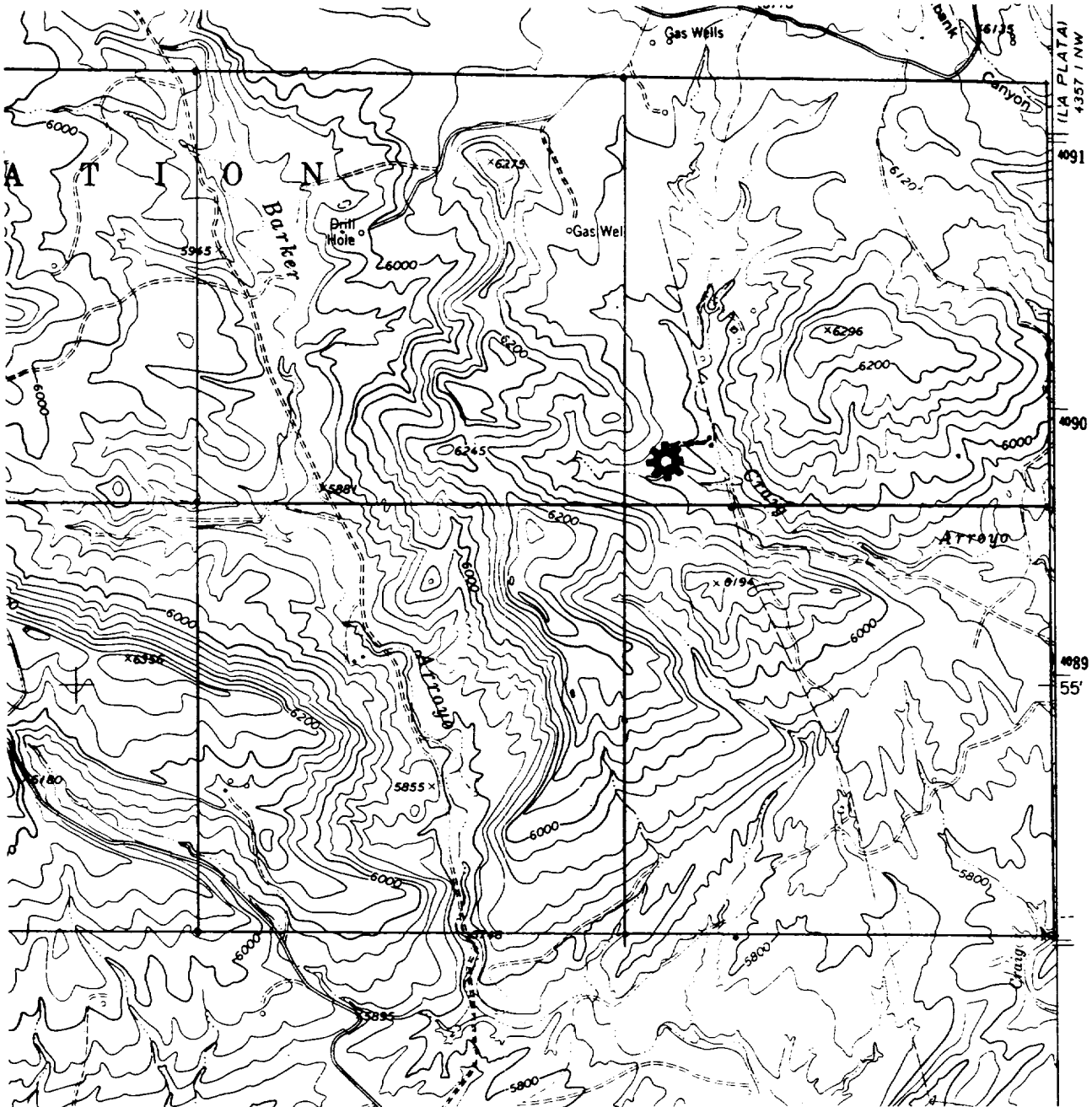
300'
450'

CROSS TIMBERS OPERATING COMPANY

UTE MOUNTAIN TRIBAL J #6

450 FSL- 500' FWL, Sec. 1, T31N-R14W

Proposed Ute Dome Dakota Well



USGS Purgatory Canyon, New Mexico, CO // 7.5' Series // Scale 1:24000