

District I
1625 N. French Dr., Hobbs, NM 88240
District II
811 South First, Artesia, NM 88210
District III
1000 Rio Brazos Road, Aztec, NM 87410
District IV
2040 South Pacheco, Santa Fe, NM 87505

State of New Mexico
Energy Minerals and Natural Resources

Form C-101
Revised March 17, 1999

Submit to appropriate District Office
State Lease - 6 Copies
Fee Lease - 5 Copies

Oil Conservation Division
2040 South Pacheco
Santa Fe, NM 87505

AMENDED REPORT

APPLICATION FOR PERMIT TO DRILL, RE-ENTER, DEEPEN, PLUGBACK, OR ADD A ZONE

¹ Operator Name and Address Amoco Production Company P. O. Box 3092 Houston, Texas 77253		² OGRID Number 000778
³ Property Code 000279		⁴ API Number 30045-29966
⁵ Property Name Atlantic Com LS		⁶ Well No. 3B

⁷ Surface Location

UL or lot no.	Section	Township	Range	Lot Idn	Feet from the	North/South line	Feet from the	East/West line	County
D	24	31N	10W		840	North	815	West	San Juan

⁸ Proposed Bottom Hole Location If Different From Surface

UL or lot no.	Section	Township	Range	Lot Idn	Feet from the	North/South line	Feet from the	East/West line	County
⁹ Proposed Pool 1 Blanco Mesaverde						¹⁰ Proposed Pool 2			

¹¹ Work Type Code N - New Drill	¹² Well Type Code Gas	¹³ Cable/Rotary Rotary	¹⁴ Lease Type Code State	¹⁵ Ground Level Elevation 6404'
¹⁶ Multiple No	¹⁷ Proposed Depth 5640'	¹⁸ Formation Mesaverde	¹⁹ Contractor Aztec	²⁰ Spud Date 9/1/99

²¹ Proposed Casing and Cement Program

Hole Size	Casing Size	Casing weight/foot	Setting Depth	Sacks of Cement	Estimated TOC
12 1/4"	9 5/8"	32.5#	250'	146 SXS CLS B	Surface
8 3/4"	7"	20#	2775'	320 SXS CLS B	Surface
6 1/4"	4 1/2"	10.5#	5640'	231 SXS CLS B	2675'

²² Describe the proposed program. If this application is to DEEPEN or PLUG BACK, give the data on the present productive zone and proposed new productive zone. Describe the blowout prevention program, if any. Use additional sheets if necessary.

PLEASE SEE ATTACHED DRILLING AND COMPLETION PROGRAM.

RECEIVED
AUG 04 1999

OIL CON. DIV.
DIST. 3

²³ I hereby certify that the information given above is true and complete to the best of my knowledge and belief. Signature: <i>Mary Corley</i>		OIL CONSERVATION DIVISION	
Printed name: Mary Corley		Approved by: <i>Ernie Busch</i> 8/9/99	
Title: Sr. Business Analyst		Title: DEPUTY OIL & GAS INSPECTOR, DIST. 3	
Date: 8/3/99		Approval Date: AUG - 9 1999 Expiration Date: AUG - 9 2000	
Phone: 281-366-4491		Conditions of Approval: Attached	

District I
PO Box 1980, Hobbs NM 88241-1980
District II
PO Drawer KK, Artesia, NM 87211-0719
District III
1000 Rio Brazos Rd., Aztec, NM 87410
District IV
PO Box 2088, Santa Fe, NM 87504-2088

State of New Mexico
Energy, Minerals & Natural Resources Department

OIL CONSERVATION DIVISION
PO Box 2088
Santa Fe, NM 87504-2088

Form C-102
Revised February 21, 1994

Instructions on back
Submit to Appropriate District Office
State Lease - 4 Copies
Fee Lease - 3 Copies

☐ AMENDED REPORT

WELL LOCATION AND ACREAGE DEDICATION PLAT

¹ API Number 30-045-29966	² Pool Code 72319	³ Pool Name Blanco Mesaverde
⁴ Property Code 000279	⁵ Property Name ATLANTIC COM LS	⁶ Well Number # 3B
⁷ OGRID No. 000778	⁸ Operator Name AMOCO PRODUCTION COMPANY	⁹ Elevation 6404

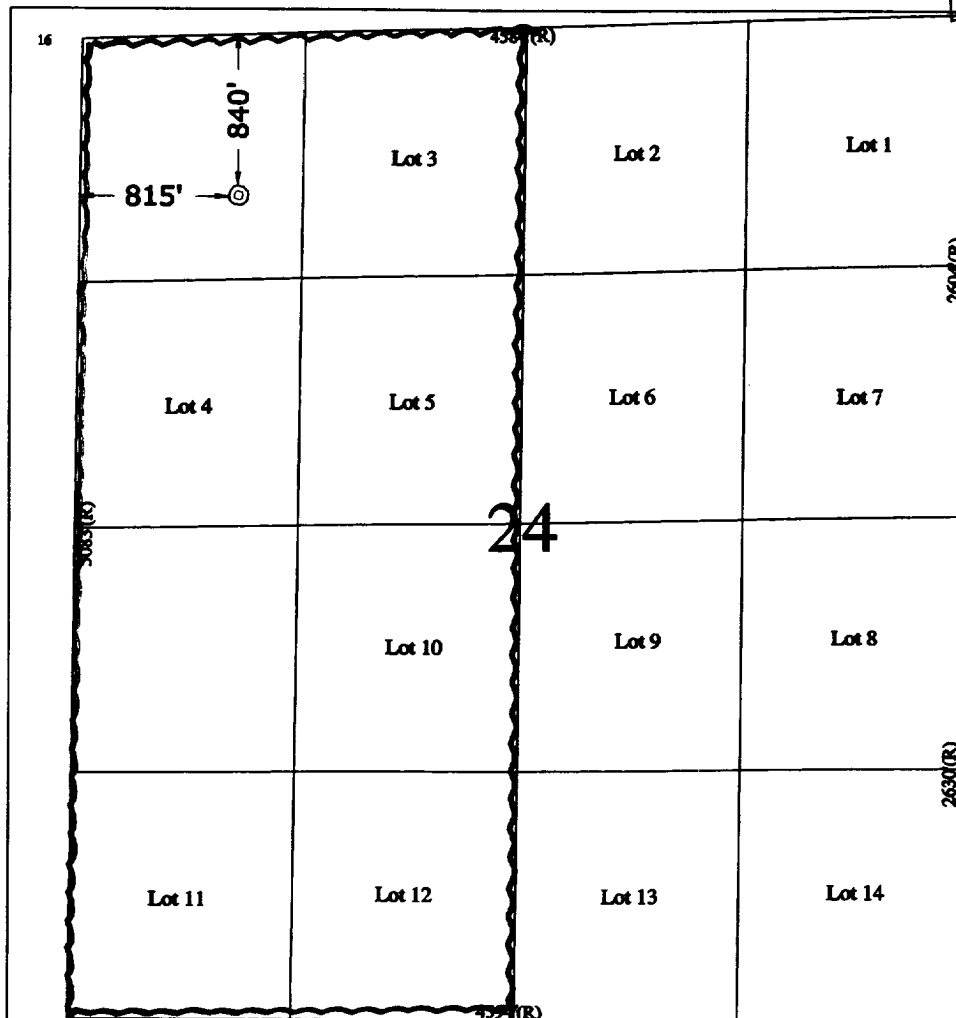
¹⁰ Surface Location

UL or Lot No. D	Section 24	Township 31 N	Range 10 W	Lot Idn	Feet from the 840	North/South line NORTH	Feet from the 815	East/West line WEST	County SAN JUAN
--------------------	---------------	------------------	---------------	---------	----------------------	---------------------------	----------------------	------------------------	--------------------

¹¹ Bottom Hole Location If Different From Surface

¹² UL or lot no.	Section	Township	Range	Lot Idn	Feet from the	North/South line	Feet from the	East/West line	County
RECEIVED AUG 04 1999									
¹³ Dedicated Acres 282.48	¹⁴ Joint or Infill	¹⁵ Consolidation Code	¹⁶ Order No.						

NO ALLOWABLE WILL BE ASSIGNED TO THIS COMPLETION UNTIL ALL INTERESTS HAVE BEEN CONSOLIDATED
OR A NON-STANDARD UNIT HAS BEEN APPROVED BY THE DIVISION



¹⁷ OPERATOR CERTIFICATION

I hereby certify that the information contained herein is true and complete to the best of my knowledge and belief.

Mary Corley
Signature

Mary Corley
Printed Name
Sr. Business Analyst

Title
8/3/99
Date

¹⁸ SURVEYOR CERTIFICATION

I hereby certify that the well location shown on this plat was plotted from field notes of actual surveys made by me or under my supervision, and that the same is true and correct to the best of my belief.

June 23, 1999

Date of Survey

Signature and Seal of Professional Surveyor



7016
Certificate Number

AMOCO
PRODUCTION COMPANY
ATLANTIC COM LS # 3B
NW¼ Section 24,
T31N, R10W, N.M.P.M.
No New Road Construction
APD MAP # 1

