

UNITED STATES  
DEPARTMENT OF THE INTERIOR  
BUREAU OF LAND MANAGEMENT

RECEIVED  
BLM

APPLICATION FOR PERMIT TO DRILL, DEEPEN, OR PLUG BACK **89 OCT 27 PM 3:43**

1a. Type of Work DRILL	5. Lease Number <b>070 FARMINGTON, NM</b> SF-078134 Unit Reporting Number	
1b. Type of Well GAS	6. If Indian, All. or Tribe	
2. Operator <b>BURLINGTON RESOURCES</b> Oil & Gas Company	7. Unit Agreement Name	
3. Address & Phone No. of Operator PO Box 4289, Farmington, NM 87499  (505) 326-9700	8. Farm or Lease Name Pierce SRC 9. Well Number 1C	
4. Location of Well <u>1445' FSL, 1945' FEL</u> <u>920</u> <u>1660</u> Latitude 36° 52.0, Longitude 107° 55.3	10. Field, Pool, Wildcat Blanco Mesaverde 11. Sec., Twn, Rge, Mer. (NMPM) Sec. 30, T-31-N, R-10-W API # 30-045- <u>30022</u>	
14. Distance in Miles from Nearest Town 4 miles from Aztec	12. County San Juan	13. State NM
15. Distance from Proposed Location to Nearest Property or Lease Line 1445'	17. Acres Assigned to Well 320 E/2	
16. Acres in Lease		
18. Distance from Proposed Location to Nearest Well, Drlg, Compl, or Applied for on this Lease 700' This action is subject to technical and Proposed <del>Drilling</del> <sup>Regulatory</sup> review pursuant to 43 CFR 3165.3 5345' and appeal pursuant to 43 CFR 3165.4.	20. Rotary or Cable Tools Rotary	
21. Elevations (DF, FT, GR, Etc.) <del>5038</del> GR <u>5493</u>	22. Approx. Date Work will Start	
23. Proposed Casing and Cementing Program See Operations Plan attached	DRILLING OPERATIONS AUTHORIZED ARE SUBJECT TO COMPLIANCE WITH ATTACHED "GENERAL REQUIREMENTS"	
24. Authorized by: <u><i>Peggy Cole</i></u> Regulatory/Compliance Administrator	<u>10-12-99</u> Date	

PERMIT NO. \_\_\_\_\_ APPROVAL DATE \_\_\_\_\_  
APPROVED BY \_\_\_\_\_ TITLE \_\_\_\_\_ DATE \_\_\_\_\_

Archaeological Report to be submitted

Threatened and Endangered Species Report to be submitted

NOTE: This format is issued in lieu of U.S. BLM Form 3160-3

Title 18 U.S.C. Section 1001, makes it a crime for any person knowingly and willfully to make to any department or agency of the United States any false, fictitious or fraudulent statements or presentations as to any matter within its jurisdiction.

11/00/00

UNITED STATES  
DEPARTMENT OF THE INTERIOR  
BUREAU OF LAND MANAGEMENT

Sundry Notices and Reports on Wells

1. Type of Well  
GAS

2. Name of Operator

**BURLINGTON  
RESOURCES**

OIL & GAS COMPANY

3. Address & Phone No. of Operator

PO Box 4289, Farmington, NM 87499 (505) 325-9700

4. Location of Well, Footage, Sec., T, R, M

920'FSL, 660'FEL, Sec.30, T-31-N, R-10-W, NMPM

5. Lease Number  
SF-078134

6. If Indian, All. or  
Tribe Name

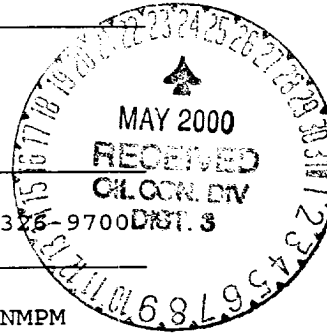
7. Unit Agreement Name

8. Well Name & Number  
Pierce SRC #1C

9. API Well No.  
30-045-

10. Field and Pool  
Blanco Mesaverde

11. County and State  
San Juan Co, NM



12. CHECK APPROPRIATE BOX TO INDICATE NATURE OF NOTICE, REPORT, OTHER DATA

Type of Submission

Type of Action

☒ Notice of Intent

☐ Abandonment

☐ Change of Plans

☐ Subsequent Report

☐ Recompletion

☐ New Construction

☐ Final Abandonment

☐ Plugging Back

☐ Non-Routine Fracturing

☐ Casing Repair

☐ Water Shut off

☐ Altering Casing

☐ Conversion to Injection

☒ Other -

13. Describe Proposed or Completed Operations

The location of the subject well has been moved from 1445'FSL, 1945'FEL to 920'FSL, 660'FEL. Attached is the new plat, topo, pipeline, and cut & fill diagram to show the revised location.

14. I hereby certify that the foregoing is true and correct.

Signed Deann Cole Title Regulatory Administrator Date 2/24/00

TLW

(This space for Federal or State Office use)

APPROVED BY /s/ Jim Lovato Title \_\_\_\_\_ Date MAY 22 2000

CONDITION OF APPROVAL, if any:

Title 18 U.S.C. Section 1001, makes it a crime for any person knowingly and willfully to make to any department or agency of the United States any false, fictitious or fraudulent statements or representations as to any matter within its jurisdiction.

RA NM000

District I  
PO Box 1980, Hobbs, NM 88241-1980

State of New Mexico  
Energy, Minerals & Natural Resources Department

Form C-102  
Revised February 21, 1994

District II  
PO Drawer DD, Artesia, NM 88211-0719

OIL CONSERVATION DIVISION  
PO Box 2088  
Santa Fe, NM 87504-2088

Instructions on back  
Submit to Appropriate District Office  
State Lease - 4 Copies  
Fee Lease - 3 Copies

District III  
1000 Rio Brazos Rd., Aztec, NM 87410

District IV  
PO Box 2088, Santa Fe, NM 87504-2088

☐ AMENDED REPORT

WELL LOCATION AND ACREAGE DEDICATION PLAT

*API Number <b>30-045-30022</b>		*Pool Code <b>72319</b>	*Pool Name <b>Blanco Mesaverde</b>
*Property Code <b>18601</b>	*Property Name <b>PIERCE SRC</b>		*Well Number <b>1C</b>
*GRID No. <b>14538</b>	*Operator Name <b>BURLINGTON RESOURCES OIL &amp; GAS COMPANY</b>		*Elevation <b>5993'</b>

<sup>10</sup> Surface Location

UL or lot no.	Section	Township	Range	Lot Idn	Feet from the	North/South line	Feet from the	East/West line	County
P	30	31N	10W		920	SOUTH	660	EAST	SAN JUAN

<sup>11</sup> Bottom Hole Location If Different From Surface

UL or lot no.	Section	Township	Range	Lot Idn	Feet from the	North/South line	Feet from the	East/West line	County

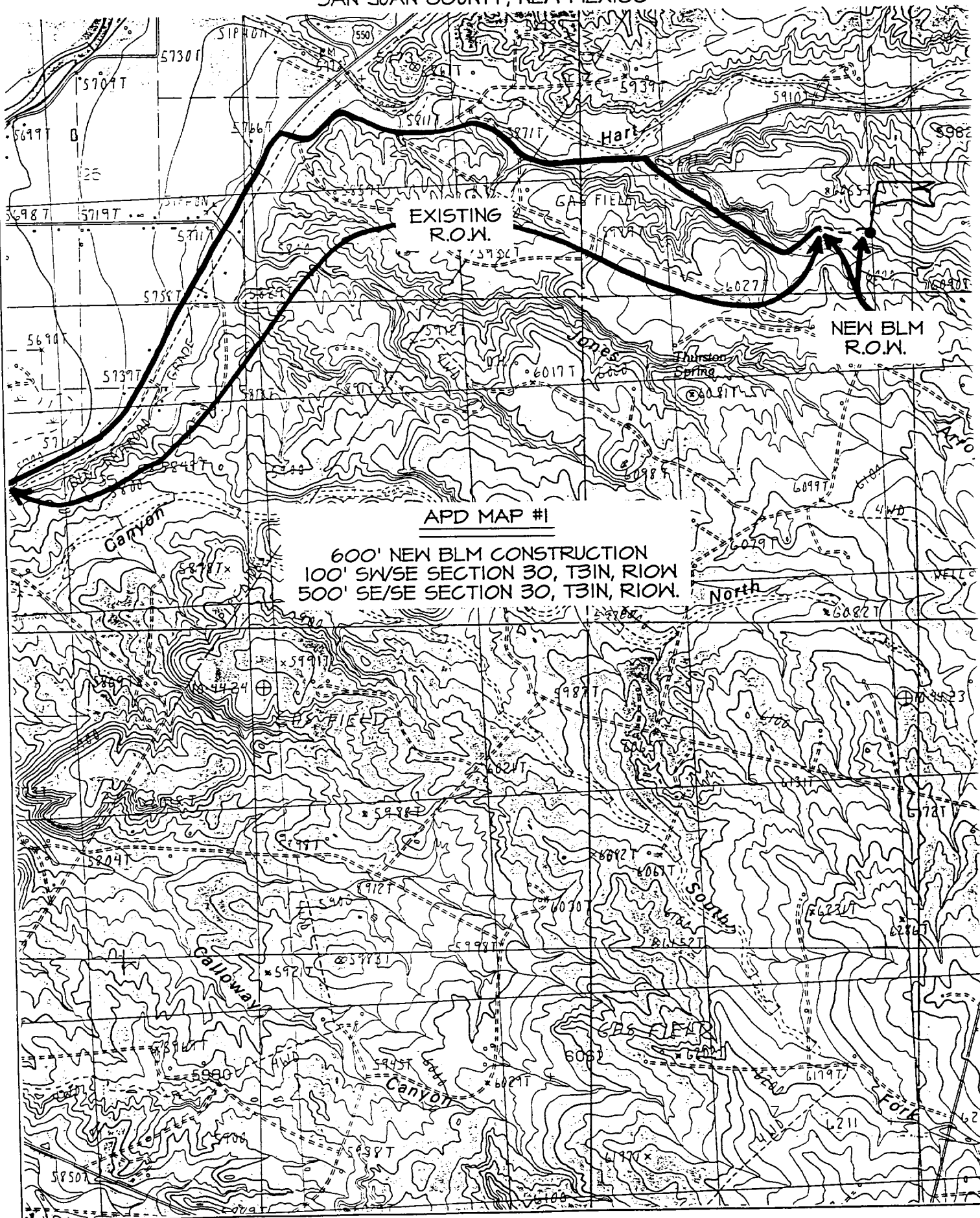
<sup>12</sup> Dedicated Acres <b>E/320</b>	<sup>13</sup> Joint or Infill	<sup>14</sup> Consolidation Code	<sup>15</sup> Order No.
---	-------------------------------	----------------------------------	-------------------------

NO ALLOWABLE WILL BE ASSIGNED TO THIS COMPLETION UNTIL ALL INTERESTS HAVE BEEN CONSOLIDATED OR A NON-STANDARD UNIT HAS BEEN APPROVED BY THE DIVISION

<sup>16</sup> 1291.62'  LOT 8  Reissued to show revised location.	1337.16'  LOT 7	2674.32'  LOT 6 ib SF-078134  LOT 5	<sup>17</sup> OPERATOR CERTIFICATION I hereby certify that the information contained herein is true and complete to the best of my knowledge and belief.  Signature <i>Peggy Cole</i> Peggy Cole  Printed Name Regulatory Administrator  Title 2-24-00  Date
5248.32'  LOT 9  LOT 10	LOT 11  LOT 12	FEE  SF-078134  LOT 14  LOT 13	<sup>18</sup> SURVEYOR CERTIFICATION I hereby certify that the well location shown on this plat was plotted from field notes of actual surveys made by me or under my supervision, and that the same is true and correct to the best of my belief.  JANUARY 31, 2000  Date of Survey  Signature and Seal <i>Neale C. Edwards</i> <b>NEALE C. EDWARDS</b> NEW MEXICO 6857 Professional Surveyor  Certificate Number 6857
5248.32'  LOT 17  LOT 18	LOT 19  LOT 20 660' 920'	2659.14'	

# BURLINGTON RESOURCES OIL & GAS COMPANY PIERCE SRC #1C

920' FSL & 660' FEL, SECTION 30, T31N, R10W, N.M.P.M.  
SAN JUAN COUNTY, NEW MEXICO



## OPERATIONS PLAN

Well Name: Pierce SRC #1C  
Surface Location: 1445' FSL, 1945' FEL, Section 30, T-31-N, R-10-W  
San Juan County, New Mexico  
Latitude 36° 52.0, Longitude 107° 55.3

Formation: Blanco Mesa Verde  
Elevation: 6038' GL

<u>Formation Tops:</u>	<u>Top</u>	<u>Bottom</u>	<u>Contents</u>
Surface	San Jose	1280'	aquifer
Ojo Alamo	1280'	1366'	aquifer
Kirtland	1366'	2196'	gas
Fruitland	2196'	2706'	gas
Pictured Cliffs	2706'	2854'	gas
Lewis	2854'	3426'	gas
Intermediate TD	2954'		
Mesa Verde	3426'	3767'	gas
Chacra	3767'	4400'	gas
Massive Cliff House	4400'	4525'	gas
Menefee	4525'	4945'	gas
Point Lookout	4945'		gas
Total Depth	5345'		

### Logging Program:

Cased hole logging - Gamma Ray, Cement bond from surface to TD  
Mud Logs/Coring/DST - none

### Mud Program:

<u>Interval- MD</u>	<u>Type</u>	<u>Weight</u>	<u>Vis.</u>	<u>Fluid Loss</u>
0- 120'	Spud	8.4-9.0	40-50	no control
120- 2954'	LSND	8.4-9.0	30-60	no control
2954- 5345'	Air/Mist	n/a	n/a	n/a

Pit levels will be visually monitored to detect gain or loss of fluid control.

### Casing Program (as listed, the equivalent, or better):

<u>Hole Size</u>	<u>Measured Depth</u>	<u>Csg Size</u>	<u>Weight</u>	<u>Grade</u>
12 1/4"	0' - 120'	9 5/8"	32.3#	H-40
8 3/4"	0' - 2954'	7"	20.0#	J-55
6 1/4"	2854' - 5345'	4 1/2"	10.5#	J-55

Tubing Program: 0' -5345' 2 3/8" 4.7# J-55

### BOP Specifications, Wellhead and Tests:

Surface to Intermediate TD -

11" 2000 psi minimum double gate BOP stack (Reference Figure #1).  
After nipple-up prior to drilling out surface casing, rams and casing will be tested to 600 psi for 30 minutes.

BOP Specifications, Wellhead and Tests (cont'd):

Intermediate TD to Total Depth -

11" 2000 psi minimum double gate BOP stack (Reference Figure #1). After nipple-up prior to drilling out intermediate casing, rams and casing will be tested to 1500 psi for 30 minutes.

Surface to Total Depth -

2" nominal, 2000 psi minimum choke manifold (Reference Figure #3).

Completion Operations -

7 1/16" 2000 psi double gate BOP stack (Reference Figure #2). After nipple-up prior to completion, pipe rams, casing and liner top will be tested to 2000 psi for 15 minutes.

Wellhead -

9 5/8" x 7" x 2 3/8" x 2000 psi tree assembly.

General -

- Pipe rams will be actuated once each day and blind rams will be actuated once each trip to test proper functioning.
- An upper kelly cock valve with handle available and drill string valves to fit each drill string will be available on the rig floors at all times.
- BOP pit level drill will be conducted weekly for each drill crew.
- All BOP tests & drills will be recorded in daily drilling reports.
- Blind and pipe rams will be equipped with extension hand wheels.

Cementing:

9 5/8" surface casing - cement with 159 sx Class "B" cement with 1/4# flocele/sx and 3% calcium chloride (188 cu.ft. of slurry, 200% excess to circulate to surface). WOC 8 hrs. Test casing to 600 psi for 30 minutes.

Saw tooth guide shoe on bottom. Bowspring centralizers will be run in accordance with Onshore Order #2.

7" intermediate casing -

Lead w/262 sx Class "B" w/3% sodium metasilicate, 7# gilsonite/sx and 0.5# flocele/sx. Tail w/90 sx 50/50 Class "B" Poz w/2% gel, 2% calcium chloride, 7# gilsonite/sx and 0.5# flocele/sx (889 cu.ft. of slurry, 60% excess to circulate to surface.) WOC minimum of 8 hours before drilling out intermediate casing. If cement does not circulate to surface, a CBL will be run to determine TOC. Test casing to 1500 psi for 30 minutes.

7" intermediate casing alternative two stage: Stage collar at 2096'. First stage: cement with 124 sx "B" 50/50 poz w/2% gel, 7 pps Gilsonite, 2% calcium chloride, 0.5 pps Cellophane. Second stage: 217 sx Class "B" with 3% sodium metasilicate, 1/2 pps Cellophane, 7 pps Gilsonite (889 cu.ft., 100% excess to circulate to surface).

Cement nose guide shoe on bottom with float collar spaced on top of shoe joint. Bowspring centralizers spaced every other joint off bottom, to the base of the Ojo Alamo at 1366'. Two turbolating centralizers at the base of the Ojo Alamo at 1366'. Bowspring centralizers spaced every fourth joint from the base of the Ojo Alamo to the base of the surface casing.