

**UNITED STATES
DEPARTMENT OF THE INTERIOR
BUREAU OF LAND MANAGEMENT**

5. LEASE DESIGNATION AND SERIAL NO.

SF078243

APPLICATION FOR PERMIT TO DRILL OR DEEPEN

1a. TYPE OF WORK

DRILL ☒DEEPEN ☐

b. TYPE OF WELL

OIL
WELL ☐GAS
WELL ☒OTHER ☐SINGLE
ZONE ☐MULTIPLE
ZONE ☒

2. NAME OF OPERATOR

Roddy Production Company Inc.

3. ADDRESS AND TELEPHONE NO.

P. O. Box 2221, Farmington, NM, 87499 (505) 325-5750

4. LOCATION OF WELL (Report location clearly and in accordance with any State requirements.)*

At surface

1230' FNL - 740' FEL

At proposed prod. zone

same

14. DISTANCE IN MILES AND DIRECTION FROM NEAREST TOWN OR POST OFFICE*

7 miles northwest of Flora Vista, NM

15. DISTANCE FROM PROPOSED*

LOCATION TO NEAREST
PROPERTY OR LEASE LINE, FT.

740'

(Also to nearest drg. unit line, if any.)

18. DISTANCE FROM PROPOSED LOCATION*

TO NEAREST WELL, DRILLING, COMPLETED,
OR APPLIED FOR, ON THIS LEASE, FT.

400'

21. ELEVATIONS (Show whether DF, RT, GR, etc.)

5990' GL

6. IF INDIAN, ALLOTTEE OR TRIBE NAME

7. UNIT AGREEMENT NAME

8. FARM OR LEASE NAME, WELL NO.

Owen No. 2A

9. API WELL NO.

30-045-30235

10. FIELD AND POOL, OR WILDCAT

Blanco Mesa Verde

11. SEC., T., R., M., OR BLK
AND SURVEY OR AREA

Section 19, T31N, R12W, NMPM

12. COUNTY

San Juan

13. STATE

New Mexico

16. NO. OF ACRES IN LEASE

318.24

17. NO. OF ACRES ASSIGNED

TO THIS WELL 318.24

19. PROPOSED DEPTH

5077'

20. ROTARY OR CABLE TOOLS

Rotary

22. APPROX. DATE WORK WILL START*

June 2000

23.

PROPOSED CASING AND CEMENTING PROGRAM

SIZE OF HOLE	GRADE, SIZE OF CASING	WEIGHT PER FOOT	SETTING DEPTH	QUANTITY OF CEMENT
12.250"	9.625", J-55	36	300'	188.8 cf, circulate to surface
8.750"	7.000", J-55	20	2440'	550.6 cf, circulate to surface
6.250"	4.500", J-55	10.5	5077'	476.0 cf, circulate to liner top @ 2315' surface

Roddy Production Company Inc. proposes to spud in the Nacimiento formation. Drill 12.250" surface hole to 300' using fresh water mud. Run and cement surface casing with adequate volume to circulate to surface. WOC 12 hours. Nipple up casing head and BOPE. Pressure test BOPE to minimum of 600 psig for 15 minutes. Drill 8.750" hole to Intermediate TD of 2440' using fresh water mud. No abnormal pressure or poisonous gas is anticipated. Run and cement intermediate casing with adequate cement volume to circulate to surface in one stage. WOC 12 hours. Pressure test BOPE to 1500 psig for 15 minutes. Drill 6.250" hole to Total Depth of 5077' using air or air/mist. Run open hole logs from TD to intermediate casing shoe. Run production liner with at least 120' overlap into intermediate casing. Cement with sufficient volume to circulate to liner top. Release drilling rig. Move in completion rig. Run cased hole correlation logs. Pressure test casing to 3000 psig for 15 minutes. Perforate select Mesa Verde intervals and stimulate with fresh water base fluid and 1500 # per foot sand. Install production equipment.

Surface is Federal, BLM.

This APD requests an existing road right of way as outlined in the Surface Use Plan.

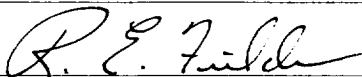
This APD is subject to technical and
procedural review pursuant to 43 CFR 3165.3
and appeal pursuant to 43 CFR 3165.4.

DRILLING OPERATIONS AND LOGS ARE
SUBJECT TO COMPLIANCE WITH ATTACHED
"GENERAL REQUIREMENTS"

IN ABOVE SPACE DESCRIBE PROPOSED PROGRAM: If proposal is to deepen, give data on present productive zone and proposed new productive zone. If proposal is to drill or deepen directionally, give pertinent data on subsurface locations and measured true vertical depths. Give blowout prevention program, if any.

24.

SIGNED



TITLE Business Manager

DATE May 9, 2000

(This space for Federal or State office use)

PERMIT NO.



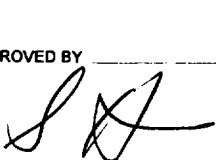
APPROVAL DATE

7-12-00

Application approval does not warrant or certify that the applicant holds legal or equitable title to those rights in the subject lease which would entitle the applicant to conduct operations thereon.

CONDITIONS OF APPROVAL, IF ANY:

APPROVED BY



TITLE

DATE

NMOCD

UNITED STATES
DEPARTMENT OF THE INTERIOR
BUREAU OF LAND MANAGEMENT

SUNDRY NOTICES AND REPORTS ON WELLS

Do not use this form for proposals to drill or to deepen or reentry to a different reservoir.
Use "APPLICATION FOR PERMIT--" for such proposals

SUBMIT IN TRIPLICATE

1. Type of Well

☐ Oil Well ☒ Gas Well ☐ Other

2. Name of Operator

Roddy Production Company, Inc.

3. Address and Telephone No.

P.O. Box 2221, Farmington, NM 87499 (505) 325-5220

4. Location of Well (Footage, Sec., T., R., M., or Survey Description)

1230' FNL - 740' FEL, Section 19, T31N, R12W, NMPM

5. Lease Designation and Serial No.

SF078243

6. If Indian, Allottee or Tribe Name

7. If Unit or CA, Agreement Designation

8. Well Name and No.

Owen No. 2A

9. API Well No.

30-045-30235

10. Field and Pool, or Exploratory Area

Blanco Mesa Verde

11. County or Parish, State

San Juan, New Mexico

12. CHECK APPROPRIATE BOX(s) TO INDICATE NATURE OF NOTICE, REPORT, OR OTHER DATA

TYPE OF SUBMISSION

- ☒ Notice of Intent
☐ Subsequent Report
☐ Final Abandonment Notice

TYPE OF ACTION

- ☐ Abandonment
☐ Recompletion
☐ Plugging Back
☐ Casing Repair
☒ Altering Casing
☐ Other
☐ Change of Plans
☐ New Construction
☐ Non-Routine Fracturing
☐ Water Shut-Off
☐ Conversion to Injection
☐ Dispose Water

13. Describe Proposed or Completed Operations (Clearly state all pertinent details, and give pertinent dates, including estimated date of starting any proposed work. If well is directionally drilled, give subsurface locations and measured and true vertical depths for all markers and zones pertinent to this work.)

Roddy Production Company proposes to amend the drilling plan on this well. The surface hole and casing will be as before. A 7 7/8" hole will be drilled with mud from the surface casing shoe to TD of 5077'. A 4 1/2", 10.5 ppf, J/K -55, ST&C casing string will be run to TD with a DV tool set 40' into Lewis and 7 regular centralizers spaced through the Mesa Verde and Lewis. 5 turbolizers will be spaced from the DV tool through the Fruitland Coal Formation. The casing will be cemented in two stages as follows:

Stage 1: Lead - 110 sacks Class B with 3% Econolite, 0.5 pps flocele and 5 pps gilsonite. Yield = 2.88 cf/sack.
Tail - 380 sacks 50/50 Class B Poz with 2% gel, 0.25 pps flocele, 5 pps gilsonite, 0.2% dispersant, 0.4% fluid loss additive and 0.1% retarder. Yield = 1.38 cf/sack.
Volume will be adjusted to open hole caliper log volume + 30% to cover DV tool.

Stage 2: Lead - 270 sacks Class B w/3% Econolite, 0.5 pps flocele and 5 pps gilsonite. Yield = 2.88 cf/sack
Tail - 50 sacks Class B w/2% CaCl2 and 0.25 pps flocele. Yield = 1.18 cf/sack
Volume will be adjusted to open hole caliper log volume + 30% to circulate to surface.

14. I hereby certify the foregoing is true and correct

Signed [Signature]

Title Business Manager

Date 06/29/00

(This space for Federal or State office use)

Approved by /s/ Jim Lovato
Conditions of approval, if any:

Title _____

Date JUL 12 2000

District II
PO Drawer DD, Artesia, NM 88211-0719

District III
1000 Rio Brazos Rd., Aztec, NM 87410

District IV
PO Box 2088, Santa Fe, NM 87504-2088

OIL CONSERVATION DIVISION
PO Box 2088
Santa Fe, NM 87504-2088

AMENDED REPORT
200 MAY - 2 PM 2:30

WELL LOCATION AND ACREAGE DEDICATION PLAT

API Number 30-045-30235		Pool Code 72319	Pool Name Blanco Mesa Verde
Property Code 25717	Property Name OWEN		Well Number 2A
GRID No. 036845	Operator Name RODDY PRODUCTION COMPANY INC.		Elevation 5990

10 Surface Location

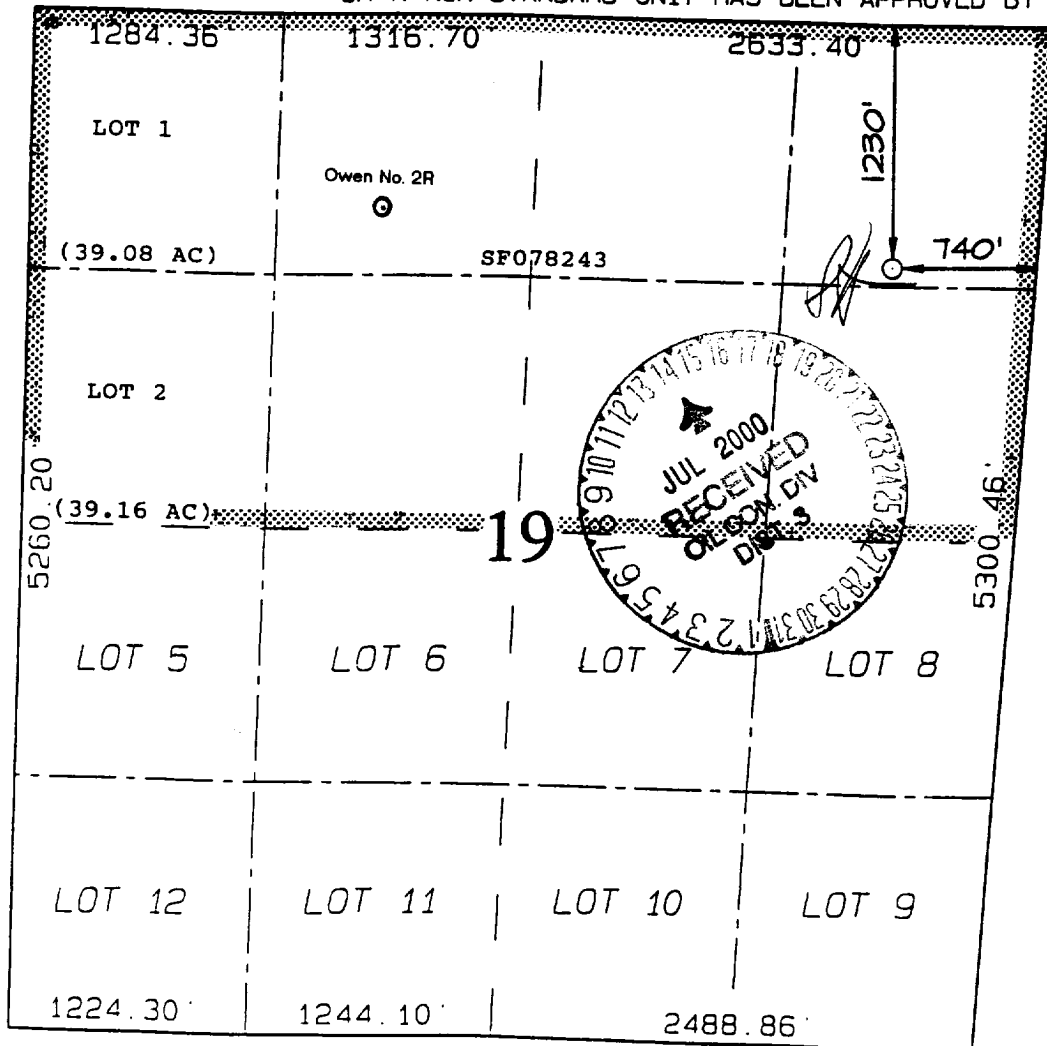
UL or lot no.	Section	Township	Range	Lot Idn	Feet from the	North/South line	Feet from the	East/West line	County
A	19	31N	12W		1230	NORTH	740	EAST	SAN JUAN

11 Bottom Hole Location If Different From Surface

UL or lot no.	Section	Township	Range	Lot Idn	Feet from the	North/South line	Feet from the	East/West line	County

Dedicated Acres 318.24	Joint or Infill Y	Consolidation Code	Order No.
----------------------------------	-----------------------------	--------------------	-----------

NO ALLOWABLE WILL BE ASSIGNED TO THIS COMPLETION UNTIL ALL INTERESTS HAVE BEEN CONSOLIDATED OR A NON-STANDARD UNIT HAS BEEN APPROVED BY THE DIVISION



17 OPERATOR CERTIFICATION

I hereby certify that the information contained herein is true and complete to the best of my knowledge and belief.

R.E. Fielder
Signature

R.E. Fielder
Printed Name
Business Manager

Title
April 26, 2000
Date

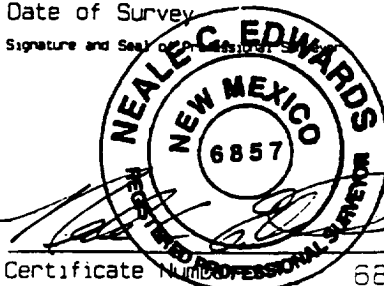
18 SURVEYOR CERTIFICATION

I hereby certify that the well location shown on this plat was plotted from field notes of actual surveys made by me or under my supervision and that the same is true and correct to the best of my belief.

APRIL 13, 2000

Date of Survey

Signature and Seal



Certificate Number 6857

Roddy Production Company
Ten Point Program
Owen No. 2A
Page Three

5. Pressure Control Equipment:

A minimum of a 3M psi BOP well control system will be utilized. BOPE will be installed and pressure tested to a minimum of 600 psig before drilling out the surface casing shoe and then will be checked daily for correct mechanical operation. Blind rams will be operated on each trip out of the hole. The BOP stack and manifold will be tested to 1500 psig after removal to set 7" slips. 7" rams will be installed before running the intermediate casing string.

A full opening drill pipe safety valve will be on the drill floor at all times and will be capable of fitting all connections.

6. Mud Program:

A fresh water, low solids, non - dispersed mud system will be used to drill the surface and intermediate hole sections. Sufficient materials will be on location at all times to maintain mud properties and control any unforeseen lost circulation or abnormal pressure problems that may be encountered in the Fruitland or Pictured Cliffs formations. The mud volume in the rig pits will be visually monitored on a routine basis.

Mud property guidelines:

<u>Interval - ft.</u>	<u>Mud Weight - ppg</u>	<u>Viscosity-sec/qt</u>	<u>Water Loss-cc's</u>
0 - 300	8.4 - 8.6	40 - 50	NC
300 - 1800	8.4	water & benex	
1800 - 2440	8.4 - 8.8	40 - 50	8 - 10
2440 - 5077	air / air mist		

7. Auxiliary Equipment:

None.



Vicinity Map
 Roddy Production Company
 Owen # 2A
 1230 ' FNL - 740 ' FEL
 Section 19, T 31 N, R 12 W, NMPM
 San Juan Co., New Mexico