

UNITED STATES
DEPARTMENT OF THE INTERIOR
BUREAU OF LAND MANAGEMENT

FORM APPROVED
OMB NO. 1004-0136
Expires: November 30, 2000

APPLICATION FOR PERMIT TO DRILL OR REENTER

1a. Type of Work <input checked="" type="checkbox"/> DRILL <input type="checkbox"/> REENTER		5. Lease Serial No. SF-079353	
1b. Type of Well <input type="checkbox"/> Oil Well <input checked="" type="checkbox"/> Gas Well <input type="checkbox"/> Other <input checked="" type="checkbox"/> Single Zone <input type="checkbox"/> Multiple Zone		6. If Indian, Allottee or Tribe Name	
2. Name of Operator Phillips Petroleum Company		7. Unit or CA Agreement Name and No. San Juan 32-8 Unit	
3a. Address 5525 Highway 64, NBU 3004, Farmington, NM 87401		8. Lease Name and Well No. SJ 32-8 Unit #257	
3b. Phone No. (include area code) 505-599-3454		9. <i>30-045 30258</i>	
4. Location of Well (Report location clearly and in accordance with any State requirements)* At surface Unit A, 1012' FNL & 1144' FEL At proposed prod. zone Same as above		10. Field and Pool, or Exploratory Basin Fruitland Coal	
14. Distance in miles and direction from nearest town or post office* 12-1/2 miles from Navajo Dam		11. Sec., T., R., M., or Blk. and Survey or Area A Section 19, T32N, R8W	
15. Distance from proposed* location to nearest property or lease line, ft. (Also to nearest drg. unit line, if any) 1012'		12. County or Parish San Juan,	
16. No. of Acres in lease 2161.15 acres		13. State NM	
17. Spacing Unit dedicated to this well 320 E/2			
18. Distance from proposed location* to nearest well, drilling, completed, applied for, on this lease, ft. @300' from 32-8 #24		20. BLM/BIA Bond No. on file ES0048	
19. Proposed Depth 3311'			
21. Elevations (Show whether DF, KDB, RT, GL, etc.) 6411' (unprepared GL)		22. Approximate date work will start* 2nd Qtr 2000	
		23. Estimated duration 1 month	

This action is subject to technical and procedural review pursuant to 43 CFR 3165.3 and appeal pursuant to 43 CFR 3165.4.

24. Attachments

**DRILLING OPERATIONS AUTHORIZED ARE
SUBJECT TO COMPLIANCE WITH ATTACHED
"GENERAL REQUIREMENTS"**

- The following, completed in accordance with the requirements of Onshore Oil and Gas Order No. 1, shall be attached to this form:
1. Well plat certified by a registered surveyor.
 2. A Drilling Plan
 3. A Surface Use Plan (if the location is on National Forest System Lands, the SUPO shall be filed with the appropriate Forest Service Office).

4. Bond to cover the operations unless covered by an existing bond on file (see Item 20 above).
5. Operator certification.
6. Such other site specific information and/or plans as may be required by the authorized officer.

25. Signature <i>Patsy Clugston</i>	Name (Printed/Typed) Patsy Clugston	Date 5/23/00
Title Sr. Regulatory/Proration Clerk		
Approved by (Signature) <i>/s/ Jim Lovato</i>	Name (Printed/Typed)	Date JUL 21 2000
Title	Office	

Application approval does not warrant or certify that the applicant holds legal or equitable title to those rights in the subject lease which would entitle the applicant to conduct operations thereon.
Conditions of approval, if any, are attached.

Title 18 U.S.C. Section 1001 and Title 43 U.S.C. Section 1212, make it a crime for any person knowingly and willfully to make to any department or agency of the United States any false, fictitious or fraudulent statements or representations as to any matter within its jurisdiction.

*(Instructions on Reverse)

NMOCD

District I
PO Box 1980, Hobbs, NM 88241-1980
District II
811 South First, Artesia, NM 88210
District III
1000 Rio Brazos Rd., Aztec, NM 87410
District IV
2040 South Pacheco, Santa Fe, NM 87505

State of New Mexico
Energy, Minerals & Natural Resources Department

OIL CONSERVATION DIVISION
2040 South Pacheco
Santa Fe, NM 87505

Form C-102
Revised October 18, 1994

Instructions on back
Submit to Appropriate District Office
State Lease - 4 Copies
Fee Lease - 3 Copies

☐ AMENDED REPORT

WELL LOCATION AND ACREAGE DEDICATION PLAT

1. API Number 30-045-30258		2. Pool Code 71629		3. Pool Name Basin Fruitland Coal	
4. Property Code 009261		5. Property Name SAN JUAN 32-8 UNIT			6. Well Number 257
7. OGRID No. 017654		8. Operator Name PHILLIPS PETROLEUM COMPANY			9. Elevation 6411'

10 Surface Location

UL or lot no.	Section	Township	Range	Lot Idn	Feet from the	North/South line	Feet from the	East/West line	County
A	19	32N	8W		1012'	NORTH	1144'	EAST	SAN JUAN

11 Bottom Hole Location If Different From Surface

UL or lot no.	Section	Township	Range	Lot Idn	Feet from the	North/South line	Feet from the	East/West line	County
A									

12 Dedicated Acres	13 Joint or Infill	14 Consolidation Code	15 Order No.
320 E/2	J	U	

NO ALLOWABLE WILL BE ASSIGNED TO THIS COMPLETION UNTIL ALL INTERESTS HAVE BEEN CONSOLIDATED OR A NON-STANDARD UNIT HAS BEEN APPROVED BY THE DIVISION

<div>16</div> <div>544.50' 1297.56' 2595.12' 1012' 1144' 5260.86' 2576.64' 483.78' 1298.88' 2597.76'</div> <div>S87°39'W SF-079353 2161.15 acres</div> <div>Section 19</div> <div>S89°10'W</div>	<div>1</div> <div>2561.46'</div>	<div>2</div> <div>N00°07'E</div>	<div>3</div> <div>2576.64'</div>	<div>4</div> <div>N00°02'W</div>
	<div>17 OPERATOR CERTIFICATION</div> <div>I hereby certify that the information contained herein is true and complete to the best of my knowledge and belief</div> <div>Signature: Patsy Clugston</div> <div>Printed Name: Patsy Clugston</div> <div>Title: Sr. Regulatory/Proration Clerk</div> <div>Date: May 22, 2000</div>			
	<div>18 SURVEYOR CERTIFICATION</div> <div>I hereby certify that the well location shown on this plat was plotted from field notes of actual surveys made by me or under my supervision, and that the same is true and correct to the best of my belief.</div> <div>Date of Survey: 11/10/99</div> <div>Signature and Seal of Professional Surveyor: [Signature]</div> <div>Certificate Number: 11393</div>			
	<div>RECEIVED JUL 2000 OIL CON. DIV. DIST. 3</div>			

PHILLIPS PETROLEUM COMPANY

SAN JUAN 32-8 UNIT No. 257

1012' FNL, 1144' FEL

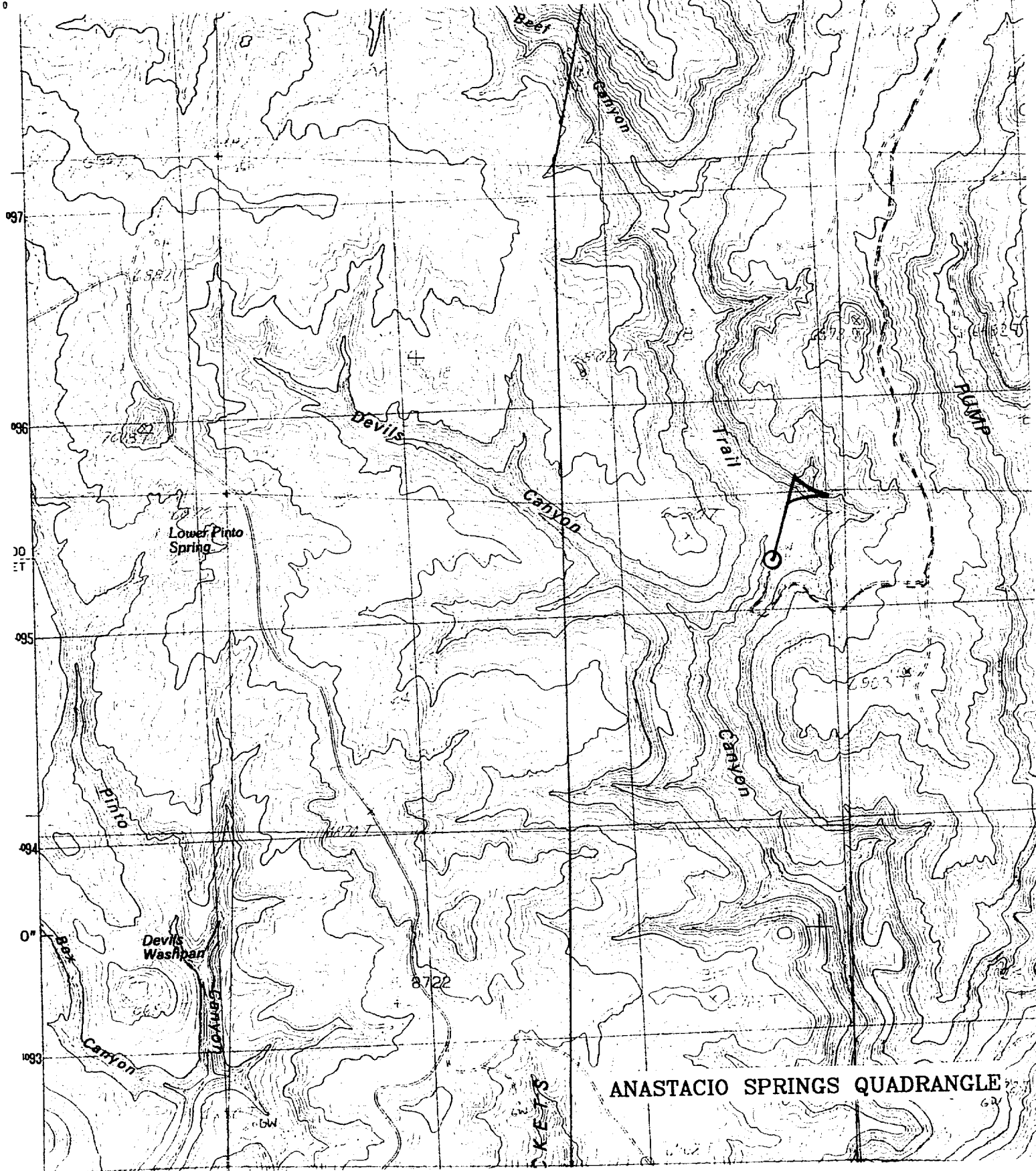
NE/4 SEC. 19, T-32-N, R-08-W, N.M.P.M.,

SAN JUAN COUNTY, NEW MEXICO

GROUND LEVEL ELEVATION: 6411'

42' 30"

SOUTHERN 260



ANASTACIO SPRINGS QUADRANGLE

PHILLIPS PETROLEUM COMPANY

WELL NAME: San Juan 32-8 Unit #257

DRILLING PROGNOSIS

1. Location of Proposed Well: Unit A, 1012' FNL & 1144' FEL
Section 19, T32N, R8W
2. Unprepared Ground Elevation: @ 6411'
3. The geological name of the surface formation is San Jose.
4. Type of drilling tools will be rotary.
5. Proposed drilling depth is 3311'.
6. The estimated tops of important geologic markers are as follows:

<u>Nacimiento - 246'</u>	
<u>Ojo Alamo - 1776'</u>	<u>Base of Coal - 3311'</u>
<u>Kirtland - 1826'</u>	<u>Picture Cliffs - 3316'</u>
<u>Fruitland - 2841'</u>	<u>Interm. Casing - 3041'</u>
<u>Top of Coal - 2981'</u>	<u>T. D. - 3311'</u>
7. The estimated depths at which anticipated water, oil, gas or other mineral bearing formations are expected to be encountered are as follows:

Water:	<u>Ojo Alamo - 1776' - 1826'</u>
Oil:	<u>none</u>
Gas:	<u>Fruitland Coal - 2981' - 3311'</u>
Gas & Water:	<u>Fruitland Coal - 3259' - 3604'</u>
8. The proposed casing program is as follows:

Surface String: 9-5/8", 36#, J/K-55 @ 200' *

Intermediate String: 7", 20#, J/K-55 @ 3041'

Production Liner: 5-1/2", 3374' - TD (see details below)

* The surface casing will be set at a minimum of 200', but could be set deeper if required to maintain hole stability.

9. Cement Program:

Surface String:

102.5 sx Type III cement. Cement to surface w/110% excess of casing/hole annulus volume w/Type III cement + 2% bwoc Calcium Chloride + 0.25#/sx Cello-flake + 60.6% Fresh water (14.5 ppg). (1.41 cf/sx yield = 145 cf)

Intermediate String:

Lead Cement: 344.0 sx Type III cement. Cement to surface - 110% excess casing/hole annular volume w/ Type III cement + 0.25#/sx Cello-flake + 5#/sx Gilsonite + 6% bwoc Bentonite + 10#/sx CSE + 3% bwow KCL + 0.4% bwoc FL-25 mixed + 0.02#/sx static free mixed at 12.0 ppg. (2.52 cf/sx yield = 867 cf)

Tail: 50 sx Type III cement + 0.25#/sx Cello-flake + 1% Calcium Chloride mixed at 14.5 ppg. (1.40 cf/sx yield = 70 cf)

Centralizer Program:

Surface: Total four (4) - 10' above shoe and top of 2nd, 3rd, & 4th jts.

Intermediate: Total seven (7) - 10' above shoe and top of 1st, 2nd, 4th, 6th, 8th, & 1st jt. into shoe.

Turbulators: Total three (3) - one at 1st jt below Ojo Alamo and next 2 jts up.

Liner :

- If the coal is cleated a 5 ½" 15.5# liner will be run in the open hole without being cemented.
- If the coal is not cleated, a 4-1/2" 11.6# liner will be run & cemented. The well will then be completed by fracture stimulation.

10. The minimum specifications for pressure control equipment which are to be used, a schematic diagram thereof showing sizes, pressure ratings (or) API series and the testing procedure and testing frequency are enclosed within the APD packet.

11. Drilling Mud Prognosis: Surface - spud mud on surface casing.
Intermediate - fresh water w/polymer sweeps. Bentonite as required for viscosity.
Below Intermediate - air drilled.

12. The testing, logging, and coring programs are as follows:
D.S.T.s or cores: _____
Logs: Mud logs only _____
13. Anticipated no abnormal pressures or temperatures to be encountered or any other potential hazards such as Hydrogen Sulfide Gas. Low risk H₂S equipment will be used.

Estimated Bottomhole pressures: Fruitland Coal - +/- 1100 psi
14. The anticipated starting date is sometime in the 3rd Qtr 2000 with duration of drilling operations for approximately 20 days thereafter.

2000drill\ 328#257prog