

UNITED STATES
DEPARTMENT OF THE INTERIOR
BUREAU OF LAND MANAGEMENT

APPLICATION FOR PERMIT TO DRILL OR DEEPEN

1a. TYPE OF WORK

DRILL ☒DEEPEN ☐

b. TYPE OF WELL

OIL
WELL ☐GAS
WELL ☒OTHER ☐SINGLE
ZONE ☒MULTIPLE
ZONE ☐

2. NAME OF OPERATOR

Cross Timbers Operating Company

3. ADDRESS AND TELEPHONE NO.

2700 Farmington Ave., Bldg. K. Ste 1 Farmington, NM 87401

4. LOCATION OF WELL (Report location clearly and in accordance with any State requirements.)*

At surface

560' FSL & 1120' FEL Sec 2, T31N, R14W

At proposed prod. zone

850' FSL & 1450' FEL Sec 2, T31N, R14W

14. DISTANCE IN MILES AND DIRECTION FROM NEAREST TOWN OR POST OFFICE*

Please see Attached Surface Use Program

15. DISTANCE FROM PROPOSED*

LOCATION TO NEAREST
PROPERTY OR LEASE LINE, FT.
(Also to nearest drlg. unit line, if any) 560'

16. NO. OF ACRES IN LEASE

18. DISTANCE FROM PROPOSED LOCATION*

TO NEAREST WELL, DRILLING, COMPLETED,
OR APPLIED FOR, ON THIS LEASE, FT. 75'

19. PROPOSED DEPTH

3,350' TVD

17. NO. OF ACRES ASSIGNED
TO THIS WELL

SE/4 160 acres

20. ROTARY OR CABLE TOOLS

Rotary

21. ELEVATIONS (Show whether DF, RT, GR, etc.)

6,085' GL.

22. APPROX. DATE WORK WILL START*

Winter 2001

23. PROPOSED CASING AND CEMENTING PROGRAM

SIZE OF HOLE	GRADE SIZE OF CASING	WEIGHT PER FOOT	SETTING DEPTH	QUANTITY OF CEMENT
12-1/4"	8-5/8" J-55	24.0#	350'	220 sx Type III
7-7/8"	4-1/2" J-55	10.5#	3,469' MD	660 sx 50/50 Poz, Type III cmt

Venting / Flaring approved for 80 days
per NTL-4A

Approval of this agreement does not
warrant or certify that the operator
thereof and other holders of operating
rights hold legal or equitable title
to those rights in the subject lease
which are committed hereto...

Set 8-5/8", 24.0#, J-55 STC surface csg @ 350'. Cmt w/approx 220
Attempt to circ cmt to surface.

Install & test BOP equipment as required. Drill 7-7/8" hole to approx 1,000'. PU directional
drilling tools and drill to the target @ 850' FSL & 1450' FEL. Build and maintain a 17.9 deg angle
to bottom.

Set 4-1/2", 10.5#, J-55, STC production csg @ 3,350' TVD. Cmt w/approx 660 sx 50/50 Poz, Type III
cmt w/additives. Final cmt volumes will be obtained fr/caliper log + 30% excess. Attempt to circ
cmt to surface.

IN ABOVE SPACE DESCRIBE PROPOSED PROGRAM: If proposal is to deepen, give data on present productive zone and proposed new productive zone. If proposal is to drill or
deepen directionally, give pertinent data on subsurface locations and measured and true vertical depths. Give blowout preventer program, if any.

24.

SIGNED

TITLE Drilling EngineerDATE 10/2/00

(This space for Federal or State office use)

PERMIT NO.

SEE ATTACHED
CONDITIONS OF APPROVAL

APPROVED FOR A PERIOD

Application approval does not warrant or certify that the applicant holds legal or equitable title to those rights in the subject lease which would be the property of the United States and its successors.

CONDITIONS OF APPROVAL, IF ANY:

(s) Dan Rabinowitz

ACTING MINERALS STAFF CHIEF

JAN 12 2001

APPROVED BY

TITLE

DATE

*See Instructions On Reverse Side

Title 18 U.S.C. Section 1001, makes it a crime for any person knowingly and willfully to make to any department or agency of the United States any false,
fictitious or fraudulent statements or representations as to any matter within its jurisdiction.

District I
PO Box 1980, Hobbs, NM 88241-1980

District II
PO Drawer DD, Artesia, NM 88211-0719

District III
1000 Rio Brazos Rd., Aztec, NM 87410

District IV
PO Box 2088, Santa Fe, NM 87504-2088

State of New Mexico
Energy, Minerals & Natural Resources Department

OIL CONSERVATION DIVISION
PO Box 2088
Santa Fe, NM 87504-2088

Form O-112
Revised February 21, 1999
Instructions on back
Submit to Appropriate District Office
State Lease - 4 Copies
Fee Lease - 3 Copies

☐ AMENDED REPORT

WELL LOCATION AND ACREAGE DEDICATION PLAT

*API Number 30-045-30489		*Pool Code 86720 -	*Pool Name UTE DOME DAKOTA -
*Property Code 22645	*Property Name UTE INDIANS A		*Well Number 32
*OGRIID No. 167057	*Operator Name CROSS TIMBERS OPERATING COMPANY		*Elevation 6085' -

¹⁰ Surface Location

UL or lot no.	Section	Township	Range	Lot Idn	Feet from the	North/South line	Feet from the	East/West line	County
P	2	31N	14W		560	SOUTH	1120	EAST	SAN JUAN

¹¹ Bottom Hole Location If Different From Surface

UL or lot no.	Section	Township	Range	Lot Idn	Feet from the	North/South line	Feet from the	East/West line	County
0	2	31N	14W		850 1034	SOUTH	1450 1667	EAST	SAN JUAN

¹² Dedicated Acres 160 SE	¹³ Joint or Infill	¹⁴ Consolidation Code	¹⁵ Order No.
--	-------------------------------	----------------------------------	-------------------------

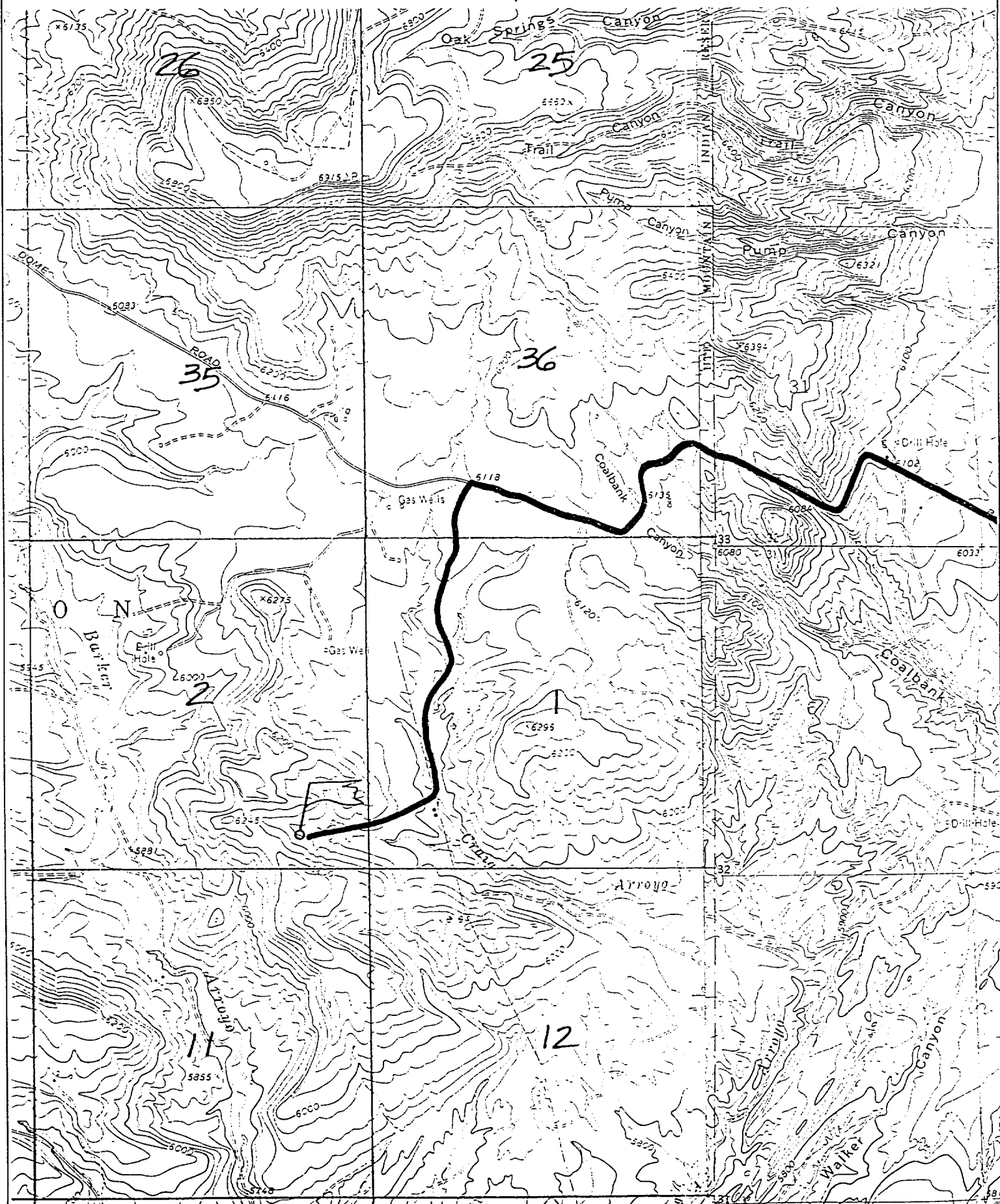
NO ALLOWABLE WILL BE ASSIGNED TO THIS COMPLETION UNTIL ALL INTERESTS HAVE BEEN CONSOLIDATED OR A NON-STANDARD UNIT HAS BEEN APPROVED BY THE DIVISION

¹⁵				¹⁷ OPERATOR CERTIFICATION	
<p>LOT 4 LOT 3 LOT 2 LOT 1</p> <p>5280.00' 1323.96'</p> <p>1034' 850' 1667' 1120'</p> <p>BOTTOM-HOLE LOCATION SURFACE LOCATION</p> <p>2</p>				I hereby certify that the information contained herein is true and complete to the best of my knowledge and belief.	
				Signature <i>Jeff Patton</i>	
				Printed Name Jeff Patton	
				Title Production Engineer	
				Date 8/3/00	
				¹⁸ SURVEYOR CERTIFICATION	
				I hereby certify that the well location shown on this plat was plotted from field notes of actual surveys made by me or under my supervision and that the same is true and correct to the best of my belief.	
				JUNE 23, 2000	
				Date of Survey	
				Signature and Seal of Professional Surveyor	
				<p>NEALE C. EDWARDS NEW MEXICO 6857</p>	
				Certificate No. 6857	

CROSS TIMBER OPERATING COMPANY UTL INDIANS A #32

560' FSL & 1120' FEL, SECTION 2, T31N, R14W, N.M.P.M.

SAN JUAN COUNTY, NEW MEXICO





Cross Timbers Operating Company

BOP SCHEMATIC FOR DRILLING OPERATIONS CLASS 1 (2M) NORMAL PRESSURE

TESTING PROCEDURE

1. Test BOP after installation:

Pressure test BOP to 200-300
psig (low pressure) for 5 min.

Test BOP to Working Press or
to 70% internal yield of surf csg
(10 min).

2. Test operation of (both) rams
on every trip.

3. Check and record Accumulator
pressure on every tour.

4. Re-pressure test BOP stack after
changing out rams.

5. Have kelly cock valve with handle available.

6. Have safety valve and subs to fit all sizes of
drill string.

**ROTATING HEAD
(OPTIONAL)**

FILL UP LINE

**FLOW LINE
TO PIT**

**BLIND
RAMS**

**PIPE
RAMS**

**KILL LINE
2" dia min.**

**TO CHOKE
MANIFOLD
2" dia min.**

See Choke Manifold drawing for
specifications

HCR VALVE (OPTIONAL)

**2" (MIN) FULL OPENING
VALVE**

MUD CROSS

**** Remove check or ball
from check valve and
press test to same press
as BOP's. ****

