

UNITED STATES
DEPARTMENT OF THE INTERIOR
BUREAU OF LAND MANAGEMENT

APPLICATION FOR PERMIT TO DRILL, DEEPEN, OR PLUG BACK

1a. Type of Work DRILL	5. Lease Number NM-01594 Unit Reporting Number
1b. Type of Well GAS	6. If Indian, All. or Tribe
2. Operator BURLINGTON RESOURCES Oil & Gas Company	7. Unit Agreement Name San Juan 32-9 Unit
3. Address & Phone No. of Operator PO Box 4289, Farmington, NM 87499 (505) 326-9700	8. Farm or Lease Name San Juan 32-9 Unit 9. Well Number #303
4. Location of Well 690' FNL, 690' FEL Latitude 36° 54.2'N, Longitude 107° 50.7'W	10. Field, Pool, Wildcat Basin Fruitland Coal 11. Sec., Twn, Rge, Mer. (NMPM) A Sec. 14, T-31-N, R-10-W API # 30-045- 30548
14. Distance in Miles from Nearest Town 11.4 miles from Aztec, NM P.O.	12. County San Juan 13. State NM
15. Distance from Proposed Location to Nearest Property or Lease Line 690'	17. Acres Assigned to Well 315.52 E/2
16. Acres in Lease	18. Distance from Proposed Location to Nearest Well, Drig, Compl, or Applied for on this Lease 1300'
19. Proposed Depth 3150' <i>This action is subject to technical and procedural review pursuant to 43 CFR 3105.3</i>	20. Rotary or Cable Tools Rotary
21. Elevations (BP, FP, GR, Etc.) 6309'GR	22. Approx. Date Work will Start 12-29-00
23. Proposed Casing and Cementing Program See Operations Plan attached	24. Authorized by: <i>[Signature]</i> Regulatory/Compliance Supervisor Date

PERMIT NO. _____ APPROVAL DATE _____
APPROVED BY /s/ Lee Otter TITLE _____ DATE APR - 3

Archaeological Report to be submitted

Threatened and Endangered Species Report to be submitted

NOTE: This format is issued in lieu of U.S. BLM Form 3160-3

Title 18 U.S.C. Section 1001, makes it a crime for any person knowingly and willfully to make to any department or agency of the United States any false, fictitious or fraudulent statements or presentations as to any matter within its jurisdiction.

ENCLOSURE

DISTRICT I
P.O. Box 1980, Hobbs, N.M. 88241-1980

DISTRICT II
P.O. Drawer DD, Artesia, N.M. 88211-0719

DISTRICT III
1000 Rio Brazos Rd., Aztec, N.M. 87410

DISTRICT IV
PO Box 2088, Santa Fe, NM 87504-2088

State of New Mexico
Energy, Minerals & Natural Resources Department

OIL CONSERVATION DIVISION

P.O. Box 2088
Santa Fe, NM 87504-2088

Form C-102

Revised February 21, 1994

Instructions on back

Submit to Appropriate District Office

State Lease - 4 Copies

Fee Lease - 3 Copies

☐ AMENDED REPORT

WELL LOCATION AND ACREAGE DEDICATION PLAT

¹ API Number 30-045-30548	² Pool Code 71629	³ Pool Name Basin Fruitland Coal
⁴ Property Code 7473	⁵ Property Name SAN JUAN 32-9	⁶ Well Number 303
⁷ GRID No. 14538	⁸ Operator Name BURLINGTON RESOURCES OIL & GAS, INC.	⁹ Elevation 6309'

¹⁰Surface Location

UL or lot no.	Section	Township	Range	Lot Idn	Feet from the	North/South line	Feet from the	East/West line	County
A	14	31-N	10-W		690'	NORTH	690'	EAST	SAN JUAN

¹¹Bottom Hole Location If Different From Surface

UL or lot no.	Section	Township	Range	Lot Idn	Feet from the	North/South line	Feet from the	East/West line	County

¹² Dedicated Acres E/315.52	¹³ Joint or Infill	¹⁴ Consolidation Code	¹⁵ Order No.
---	-------------------------------	----------------------------------	-------------------------

NO ALLOWABLE WILL BE ASSIGNED TO THIS COMPLETION UNTIL ALL INTERESTS HAVE BEEN CONSOLIDATED
OR A NON-STANDARD UNIT HAS BEEN APPROVED BY THE DIVISION

16	FD. B.L.M. BC 1968	N 87-16-48 W 2627.11'	FD. BC B.L.M. 1968	17	OPERATOR CERTIFICATION
LOT 4	LOT 3	LOT 2	LOT 1	I hereby certify that the information contained herein is true and complete to the best of my knowledge and belief	
		LAT. 36°54.2'N LONG. 107°50.7'W	690' 624' 618'	Signature <i>Peggy Cole</i>	
		USA NM-01594	LOT 6	Printed Name Peggy Cole	
	LOT 5	LOT 7		Title Regulatory Supervisor	
		FD. B.L.M. BC 1968	LOT 9	Date 12-29-00	
		LOT 8		18	SURVEYOR CERTIFICATION
		LOT 10	LOT 11	I hereby certify that the well location shown on this plat was plotted from field notes of actual surveys made by me or under my supervision, and that the same is true and correct to the best of my belief.	
		LOT 12		Date of Survey 12-29-00	
				Signature and Seal of Professional Surveyor <i>[Signature]</i>	
				8894	
				Certificate Number	

BURLINGTON RESOURCES OIL & GAS, INC.

SAN JUAN 32-9 #303

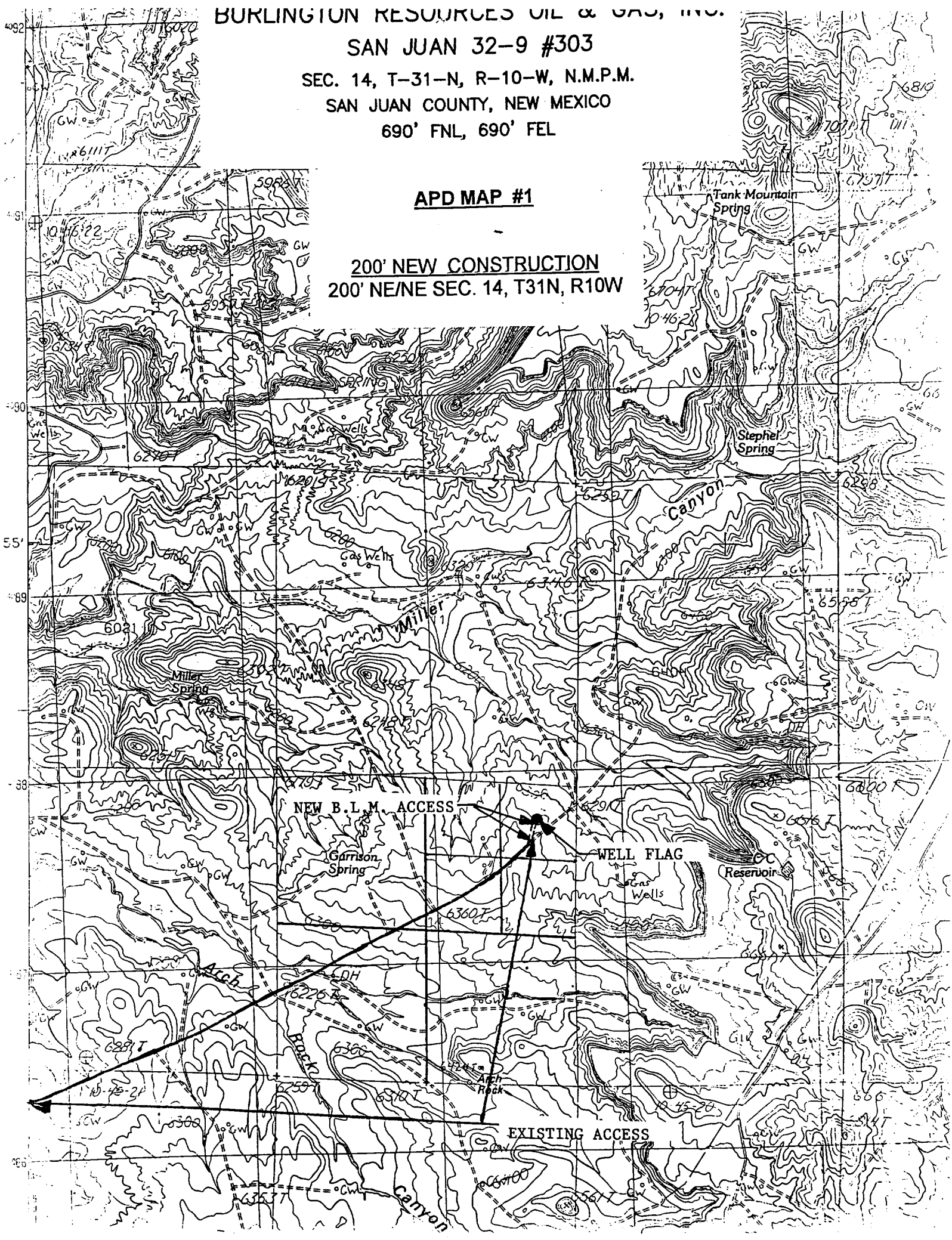
SEC. 14, T-31-N, R-10-W, N.M.P.M.

SAN JUAN COUNTY, NEW MEXICO

690' FNL, 690' FEL

APD MAP #1

200' NEW CONSTRUCTION
200' NE/NE SEC. 14, T31N, R10W



OPERATIONS PLAN

Well Name: San Juan 32-9 Unit #303
Location: 690' FNL, 690' FEL Section 14, T-31-N, R-10-W
Latitude 36° 54.2' N, Longitude 107° 50.7' W
San Juan County, NM
Formation: Basin Fruitland Coal
Elevation: 6309' GL

Formation:	Top	Bottom	Contents
Surface	San Jose	1517'	
Ojo Alamo	1517'	1587'	aquifer
Kirtland	1587'	2739'	gas
Fruitland	2739'	3105'	gas
Pictured Cliffs	3105'	3150'	gas
Total Depth	3150'		

Logging Program: Platform Express from TD to surface.

Mudlog: 2 Man unit from Ojo Alamo to TD.

Coring Program: none

Mud Program:

Interval	Type	Weight	Vis.	Fluid Loss
0- 200'	Spud	8.4-9.0	40-50	no control
200-3150'	Non-dispersed	8.4-9.5	30-60	no control

Casing Program (as listed, the equivalent, or better):

Hole Size	Depth Interval	Csg. Size	Wt.	Grade
8 3/4"	0' - 200'	7"	20.0#	J-55
6 1/4"	0' - 3150'	4 1/2"	10.5#	K-55

Tubing Program:

0' - 3150'	2 3/8"	4.7#	J-55
------------	--------	------	------

Float Equipment: 7" surface casing - saw tooth guide shoe. Centralizers will be run in accordance with Onshore Order #2.

4 1/2" production casing - guide shoe and self-fill float collar. Three centralizers run every fourth joint above shoe. Two turbolizing type centralizers - one below and one into the base of the Ojo Alamo @ 1587'. Standard centralizers thereafter every fourth joint up to the base of the surface pipe.

Wellhead Equipment: 7" x 4 1/2" x 2 3/8" x 11" 2000 psi xmas tree assembly.

Cementing:

7" surface casing - cement with 76 sx Class "B" cement with 1/4# flocele/sx and 3% calcium chloride (90 cu.ft. of slurry, 200% excess to circulate to surface). WOC 8 hrs. Test casing to 600 psi/30 minutes.

4 1/2" production casing - lead w/206 sacks Class "G" TXI lightweight cmt with 2.5% sodium metasilicate, 2% calcium chloride, 10 pps gilsonite, 0.5 pps cellophane flakes, and 0.2% antifoam. Tail with 90 sacks 50/50 Class "G" Pozmix with 2% gel, 2% calcium chloride, 1/4#/sack cellophane flakes, 5 pps gilsonite, and 0.1% antifoam (646 cu.ft., 100% excess to circulate to surface).

Note: If open hole logs are run, cement volumes will be based on 25% excess over caliper volumes.

BOP and tests:

Surface to TD - 11" 2000 psi (minimum) double gate BOP stack (Reference Figure #1). Prior to drilling out surface casing, test rams to 600#/30 min.

Completion - 7 1/6" 2000 psi (minimum) double gate BOP stack (Reference Figure #2). Prior to completion operations, test blind rams and casing to 1500 psi for 30 minutes; all pipe rams and casing to 1500 psi for 30 minutes each.

From surface to TD - choke manifold (Reference Figure #3).

Pipe rams will be actuated at least once each day and blind rams actuated once each trip to test proper functioning. An upper kelly cock valve with handle and drill string safety valves to fit each drill string will be maintained and available on the rig floor.

Additional information:

- * The Fruitland Coal formation will be completed.
- * Anticipated pore pressure for the Fruitland is 500 psi.
- * This gas is dedicated.
- * The east half of section 14 is dedicated to the Fruitland Coal.

Date: 1/3/01

Drilling Engineer: Eric J. Giles