

FORM APPROVED  
OMB NO. 1004-0136  
Expires February 28, 1995

5. LEASE DESIGNATION AND SERIAL NO.

SF 078118

6. IF INDIAN, ALLOTTEE OR TRIBE NAME

7. UNIT AGREEMENT NAME

Johns Federal

8. FARM OR LEASE NAME WELL NO.

# 1B

9. API WELL NO.

30-045-38658

10. FIELD AND POOL, OR WILDCAT

Blanco Mesaverde

11. SEC., T., R., M., OR BLK.  
G AND SURVEY OR AREA

Sec. 18, T32N, R11W

12. COUNTY OR PARISH

13. STATE

San Juan County

NM

17. NO. OF ACRES ASSIGNED TO THIS WELL.	
--	--

316.30 N/2

## 20. ROTARY OR CABLE TOOLS

Rotary

22. APPROX. DATE WORK WILL START\*

06/20/01

## PROPOSED CASING AND CEMENTING PROGRAM

SIZE OF HOLE	GRADE, SIZE OF CASING	WEIGHT PER FOOT	SETTING DEPTH	QUANTITY OF CEMENT
12-1/2"	K-55; 9-5/8"	36#	285'	141 sxs, circ. -
8-3/4"	K-55; 7"	20#	2713'	436 sxs, circ. -
6-1/4"	K-55, 4 1/2"	10.5#	5899' ~	259 sxs, TOC @ 2613'

It is proposed to drill a vertical wellbore in the Blanco Mesaverde Pool. An NOS was filed 02/06/01. The well will be drilled and equipped according to the following additional attachments:

1. Well Location & Acreage Dedication Plat (C-102).
2. Proposed Well Plan Outline.
3. Cementing Plan.
4. Blowout Preventer Hookup.
5. Surface Use Plan.
6. Production Facility Layout.

This action is subject to technical and procedural review pursuant to 43 CFR 3105.3 and appeal pursuant to 43 CFR 3105.4.

This application includes ROW's for the well pad, access road, cathodic protection and pipeline.

IN ABOVE SPACE DESCRIBE PROPOSED PROGRAM: If proposal is to deepen give data on present productive zone and proposed new productive zone. If proposal is to drill or deepen directionally, give pertinent data on subsurface locations and measured and true vertical depths. Give blowout preventer program, if any.

SIGNED Kimberly Southall TITLE Associate Property Assistant  
(This space for Federal or State office Use)

DATE 04/16/01

PERMIT NO.

APPROVAL DATE

Application approval does not warrant or certify that the applicant holds legal or equitable title to those rights in the subject lease which would entitle the applicant to conduct operations thereon.

CONDITIONS OF APPROVAL, IF ANY:

APPROVED BY **/s/ Joel Farrell**

TITLE

DATE:

\*See Instructions On Reverse Side

**Title 18 U.S.C. Section 1001, makes it a crime for any person knowingly and willfully to make to any department or agency of the United States any false, fictitious or fraudulent statements or representations as to any matter within its jurisdiction.**

**NMOC D**

District I  
PO Box 1980, Hobbs, NM 88241-1980

District II  
PO Drawer 00, Artesia, NM 88211-0719

District III  
1000 Rio Brazos Rd., Aztec, NM 87410

District IV  
PO Box 2088, Santa Fe, NM 87504-2088

State of New Mexico  
Energy, Minerals & Natural Resources Department

OIL CONSERVATION DIVISION  
PO Box 2088  
Santa Fe, NM 87504-2088

Form C-102

Revised February 21, 1994

Instructions on back  
Submit to Appropriate District Office  
State Lease - 4 Copies  
Fee Lease - 3 Copies

☐ AMENDED REPORT

WELL LOCATION AND ACREAGE DEDICATION PLAT

API Number <b>30-045-30658</b>	Pool Code <b>72319</b>	Pool Name <b>BLANCO MESAVERDE</b>
Property Code <b>3207</b>	Property Name <b>JOHNS FEDERAL</b>	Well Number <b>99B</b>
OGRIID No. <b>005073</b>	Operator Name <b>CONOCO, INC.</b>	Elevation <b>6580'</b>

10 Surface Location

UL or lot no. <b>G</b>	Section <b>18</b>	Township <b>32N</b>	Range <b>11W</b>	Lot Idn	Feet from the <b>1570</b>	North/South line <b>NORTH</b>	Feet from the <b>2005</b>	East/West line <b>EAST</b>	County <b>SAN JUAN</b>
---------------------------	----------------------	------------------------	---------------------	---------	------------------------------	----------------------------------	------------------------------	-------------------------------	---------------------------

11 Bottom Hole Location If Different From Surface

UL or lot no.	Section	Township	Range	Lot Idn	Feet from the	North/South line	Feet from the	East/West line	County
---------------	---------	----------	-------	---------	---------------	------------------	---------------	----------------	--------

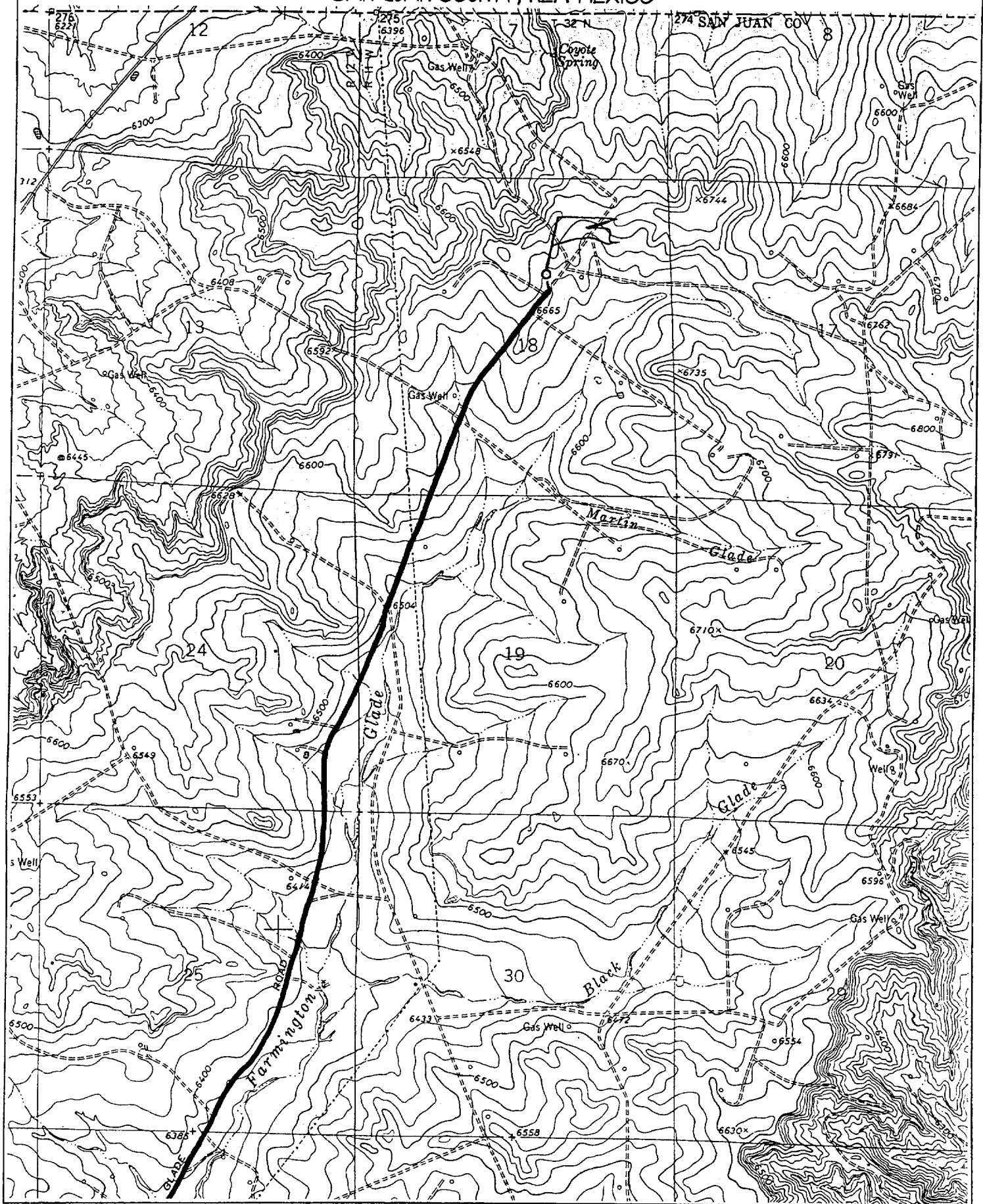
12 Dedicated Acres <b>316.30 Acres - N/2</b>	13 Joint or Infill	14 Consolidation Code	15 Order No.
---	--------------------	-----------------------	--------------

NO ALLOWABLE WILL BE ASSIGNED TO THIS COMPLETION UNTIL ALL INTERESTS HAVE BEEN CONSOLIDATED  
OR A NON-STANDARD UNIT HAS BEEN APPROVED BY THE DIVISION

16	1228.26'	1286.34'	2572.68'	17 OPERATOR CERTIFICATION
	LOT 1			I hereby certify that the information contained herein is true and complete to the best of my knowledge and belief.
2628.12'			1570'	<i>Kim Southall</i>
	LOT 2	1A SF-078118	2005'	Signature Kim Southall
			1R	Printed Name Property Analyst
				Title <i>February 19, 2001</i>
				Date
		18		18 SURVEYOR CERTIFICATION
	LOT 3			I hereby certify that the well location shown on this plat was plotted from field notes of actual surveys made by me or under my supervision and that the same is true and correct to the best of my belief.
2601.72'			5208.72'	JANUARY 10, 2001
	LOT 4			Date of Survey
1280.40'			2695.44'	Signature and Seal of Professional Surveyor
				<i>NEALE C. EDWARDS</i>
				NEW MEXICO
				6857
				Certificate No. PROFESSIONAL 6857

CONOCO, INC. JOHNS FEDERAL #1B

1570' FNL & 2005' FEL, SECTION 18, T32N, R11W, N.M.P.M.  
SAN JUAN COUNTY, NEW MEXICO



**Directions from the Intersection of US Hwy 550 & State Hwy 574**

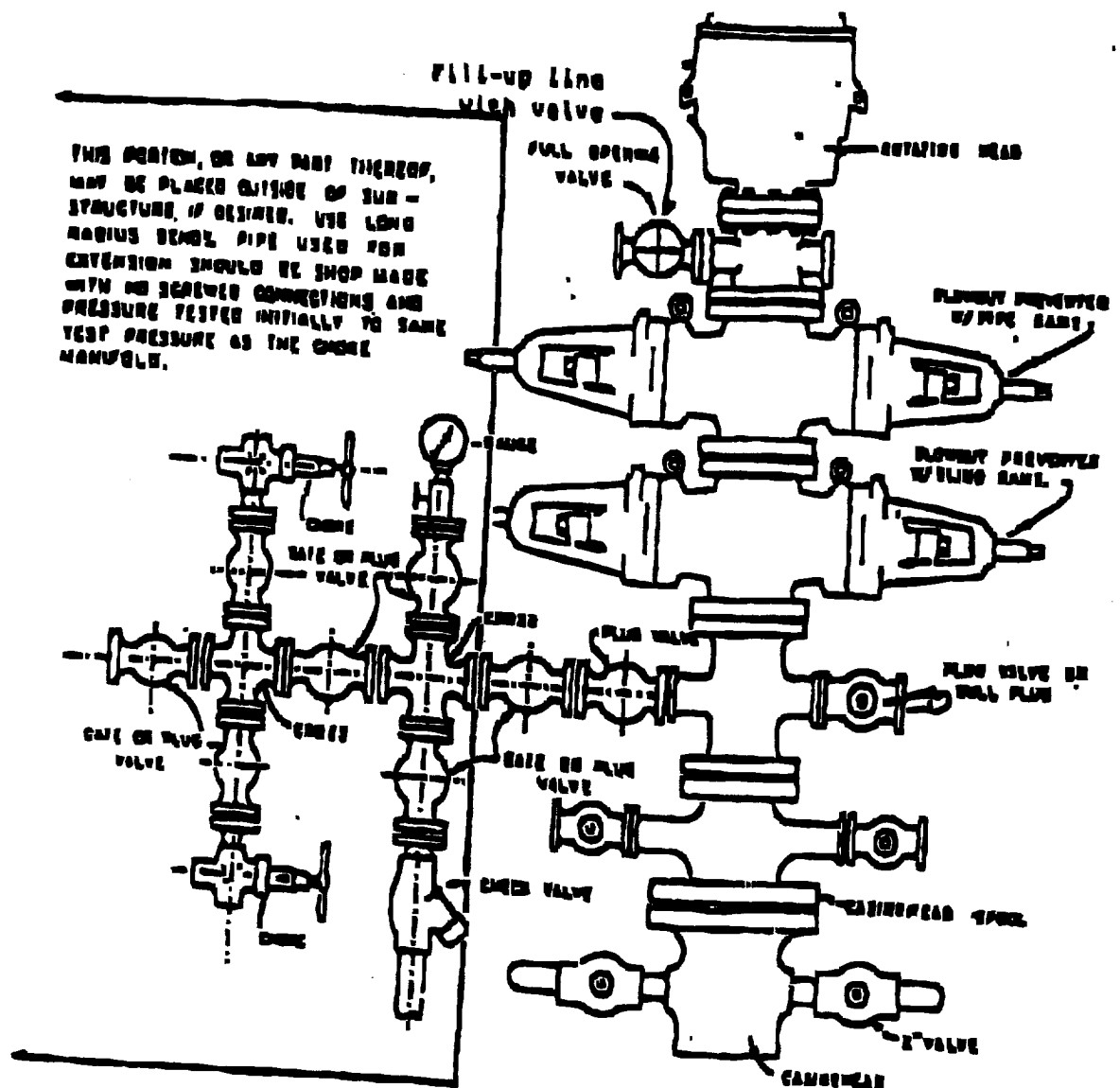
**in Aztec, New Mexico to Conoco, Inc. Johns Federal #1B**

**1570' FNL & 2005' FEL, Section 18, T32N, R11W, N.M.P.M., San Juan County, NM**

From the intersection of US Hwy 550 & State Hwy 574 in Aztec, NM, travel North-westerly on State Hwy 574 for 7.7 miles to Glade Road;

Go right (North-easterly) on Glade Road for 4.5 miles to fork in road;

Go straight (North-easterly) for 2.0 miles to new access on left-hand side of existing roadway which continues for 50' to staked location.



# BLOWOUT PREVENTER HOOKUP

Drilling contractors used in the San Juan Basing supply 1000 psi equipment, but cannot provide annular preventors because of sub-structure limitations. Maximum anticipated surface pressures for this well will not exceed the working pressure of the proposed BOP system. Please see the attached BOP diagram details 2000 psi equipment according to Onshore Order No. 2 even though the equipment will test to 3000 psi. The 2000 psi system allows deletion of the annular preventor and fulfills your requirements (note diagram No. 1). In addition, the following equipment will comprise the 1000 psi system:

1. Two rams with one blind and one pipe ram.
2. Kill line (2 inch maximum).
3. One kill line valve.
4. One choke line valve.
5. Two chokes (reference diagram No. 1).
6. Upper Kelly cock valve with handle.
7. Safety valve and subs to fit all drill strings in use.
8. Two-inch minimum choke line.
9. Pressure gauge on choke manifold.
10. Fill-up line above the upper most preventer.
11. Rotating head.