

District I
PO Box 1980, Hobbs, NM 88241-1980
District II
811 South First, Artesia, NM 88210
District III
1000 Rio Brazos Rd., Aztec, NM 87410
District IV
2040 South Pacheco, Santa Fe, NM 87505

State of New Mexico
Energy, Minerals & Natural Resources Department

OIL CONSERVATION DIVISION

2040 South Pacheco
Santa Fe, NM 87505

Form C-101

Revised October 18, 1994

Instructions on back

Submit to Appropriate District Office

State Lease - 6 Copies

Fee Lease - 5 Copies

AMENDED REPORT



APPLICATION FOR PERMIT TO DRILL, RE-ENTER, DEEPEN, PLUGBACK, OR ADD A ZONE

¹ Operator Name and Address. Burlington Resources Oil & Gas Company PO Box 4289, Farmington, NM 87499		² OGRID Number 14538
		³ API Number 30-045-30677
⁴ Property Code 6785	⁵ Property Name Allison Unit Com	⁶ Well No. 76

⁷ Surface Location									
UL or lot no.	Section	Township	Range	Lot Idn	Feet from the	North/South line	Feet from the	East/West line	County
E	31	32N	6W		1700	North	1200	West	San Juan

⁸ Proposed Bottom Hole Location If Different From Surface									
UL or lot no.	Section	Township	Range	Lot Idn	Feet from the	North/South line	Feet from the	East/West line	County
⁹ Proposed Pool 1 Blanco Mesaverde					¹⁰ Proposed Pool 2 Basin Dakota				

¹¹ Work Type Code D	¹² Well Type Code G	¹³ Cable/Rotary Rotary	¹⁴ Lease Type Code Fee	¹⁵ Ground Level Elevation 6386'
¹⁶ Multiple Y	¹⁷ Proposed Depth 8008'	¹⁸ Formation Mesaverde/Dakota	¹⁹ Contractor N/a	²⁰ Spud Date N/a

²¹ Proposed Casing and Cement Program					
Hole Size	Casing Size	Casing weight/foot	Setting Depth	Sacks of Cement	Estimated TOC
12 1/4	9 5/8	32.3#	200'	188 cu.ft.	Surface
8 3/4	7	20.0#	3503'	1185 cu.ft.	Surface
6 1/4	4 1/2	10.5#	3403-8008'	662 cu.ft.	3403'

²² Describe the proposed program. If this application is to DEEPEN or PLUG BACK give the data on the present productive zone and proposed new productive zone. Describe the blowout prevention program, if any. Use additional sheets if necessary.

11" 3000 psi minimum double gate BOP

²³ I hereby certify that the information given above is true and complete to the best of my knowledge and belief. Signature: <i>Peggy Cole</i>		OIL CONSERVATION DIVISION	
Printed name: Peggy Cole		Approved by: <i>[Signature]</i>	
Title: Regulatory/Compliance Supervisor		Title: DEPUTY OIL & GAS INSPECTOR, DIST. III	
Date: 5-30-01		Approval Date: MAY 31 2001	Expiration Date: MAY 31 2002
Phone: 505-326-9700		Conditions of Approval : Attached <input type="checkbox"/>	

DISTRICT I
1825 N. French Dr., Hobbs, N.M. 88240

State of New Mexico
Energy, Minerals & Natural Resources Department

Form C-102
Revised August 15, 2000

DISTRICT II
811 South First, Artesia, N.M. 88210

Submit to Appropriate District Office
State Lease - 4 Copies
Fee Lease - 3 Copies

DISTRICT III
1000 Rio Brazos Rd., Aztec, N.M. 87410

OIL CONSERVATION DIVISION

2040 South Pacheco
Santa Fe, NM 87505

DISTRICT IV
2040 South Pacheco, Santa Fe, NM 87505

☐ AMENDED REPORT

WELL LOCATION AND ACREAGE DEDICATION PLAT

¹ API Number 30-045- 30677	² Pool Code 72319/71599	³ Pool Name Blanco Mesaverde/Basin Dakota
⁴ Property Code 6785	⁶ Property Name ALLISON UNIT COM	⁵ Well Number 76
⁷ OGRID No. 14538	⁸ Operator Name BURLINGTON RESOURCES OIL & GAS INC.	⁹ Elevation 6386

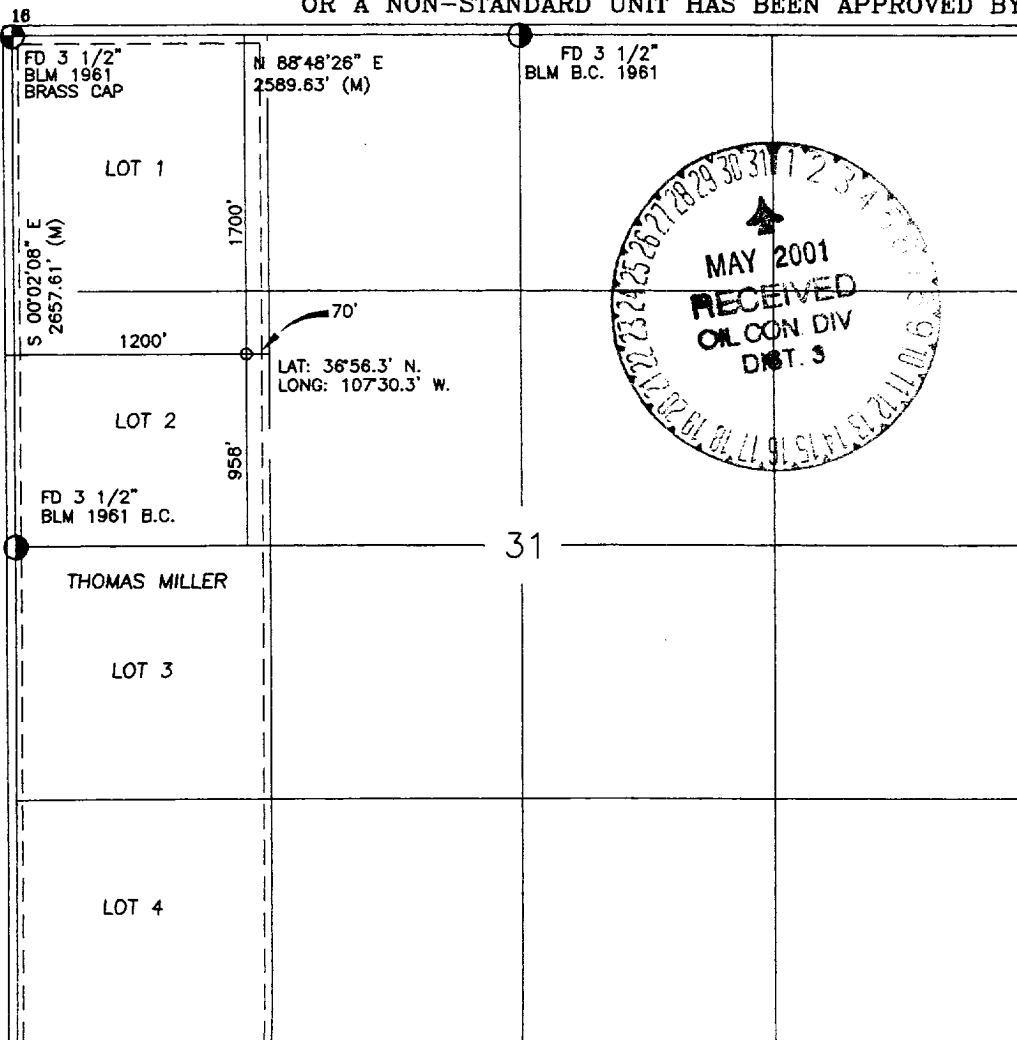
¹⁰ Surface Location

UL or lot no.	Section	Township	Range	Lot Idn	Feet from the	North/South line	Feet from the	East/West line	County
E	31	32-N	6-W		1700	NORTH	1200	WEST	SAN JUAN

¹¹ Bottom Hole Location If Different From Surface

UL or lot no.	Section	Township	Range	Lot Idn	Feet from the	North/South line	Feet from the	East/West line	County
¹² Dedicated Acres W/313.51			¹³ Joint or Infill		¹⁴ Consolidation Code		¹⁵ Order No.		

NO ALLOWABLE WILL BE ASSIGNED TO THIS COMPLETION UNTIL ALL INTERESTS HAVE BEEN CONSOLIDATED
OR A NON-STANDARD UNIT HAS BEEN APPROVED BY THE DIVISION



17 OPERATOR CERTIFICATION

I hereby certify that the information contained herein
is true and complete to the best of my knowledge and
belief.

Peggy Cole
Signature

Peggy Cole

Printed Name

Regulatory Supervisor

Title

Date
5-22-01

18 SURVEYOR CERTIFICATION

I hereby certify that the well location shown on this plat
was plotted from field notes of actual surveys made by
me or under my supervision and that the same is true
and correct to the best of my belief.

3-20-01
Date of Survey
Signature and Seal of Professional Surveyor

8894
Certificate Number