

UNITED STATES  
DEPARTMENT OF THE INTERIOR  
BUREAU OF LAND MANAGEMENT

Sundry Notices and Reports on Wells

1. Type of Well  
GAS

2. Name of Operator

**BURLINGTON  
RESOURCES**

OIL & GAS COMPANY

3. Address & Phone No. of Operator

PO Box 4289, Farmington, NM 87499 (505) 326-9700

4. Location of Well, Footage, Sec., T, R, M

2515' FNL, 810' FEL, Sec.20, T-31-N, R-10-W, NMPM

5. Lease Number  
NM-03187

6. If Indian, All. or  
Tribe Name

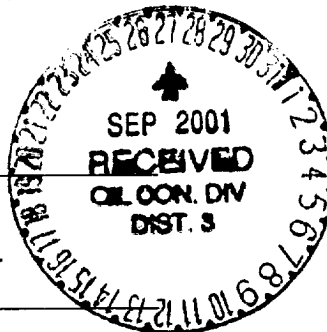
7. Unit Agreement Name

8. Well Name & Number  
Lambe #2C

9. API Well No.  
30-045-30747

10. Field and Pool  
Blanco MV/Basin DK

11. County and State  
San Juan Co, NM



12. CHECK APPROPRIATE BOX TO INDICATE NATURE OF NOTICE, REPORT, OTHER DATA

Type of Submission

Type of Action

☒ Notice of Intent

☐ Abandonment

☒ Change of Plans

☐ Subsequent Report

☐ Recompletion

☐ New Construction

☐ Final Abandonment

☐ Plugging Back

☐ Non-Routine Fracturing

☐ Casing Repair

☐ Water Shut off

☐ Altering Casing

☐ Conversion to Injection

☐ Other -

13. Describe Proposed or Completed Operations

It is intended to add the Dakota formation to the subject well. The approved operations plan will be altered according to the attached.

RECEIVED  
2001 SEP 10 AM 7:23  
0707

14. I hereby certify that the foregoing is true and correct.

Signed [Signature] Title Regulatory Supervisor Date 9/7/01  
TLW

(This space for Federal or State Office use)

APPROVED BY \_\_\_\_\_ Title \_\_\_\_\_ Date 9/24/01

CONDITION OF APPROVAL, if any:

Title 18 U.S.C. Section 1001, makes it a crime for any person knowingly and willfully to make to any department or agency of the United States any false, fictitious or fraudulent statements or representations as to any matter within its jurisdiction.

NM000

District I-  
1900 Hwy 1900, Hobbs, NM 88241-1900  
District II  
111 South First, Artesia, NM 88210  
District III  
1000 Rio Brazos Rd., Aztec, NM 87410  
District IV  
2040 South Pacheco, Santa Fe, NM 87505

State of New Mexico  
Energy, Minerals & Natural Resources Department

OIL CONSERVATION DIVISION  
2040 South Pacheco  
Santa Fe, NM 87505

Form C-102  
Revised October 18, 1994  
Instructions on back  
Submit to Appropriate District Office  
State Lease - 4 Copies  
Fee Lease - 3 Copies

☐ AMENDED REPORT

WELL LOCATION AND ACREAGE DEDICATION PLAT

1. API Number 30-045-30747		2. Pool Code 72319/71599		3. Pool Name Blanco Mesaverde/Basin Dakota	
4. Property Code		5. Property Name LAMBE			
6. OGRID No. 14538		7. Operator Name Burlington Resources Oil & Gas Company, LP			
		8. Well Number 2C			
		9. Elevation 6096'			

10. Surface Location									
UL or lot no.	Section	Township	Range	Lot Idn	Feet from the	North/South line	Feet from the	East/West line	County
H	20	31N	10W		2515'	NORTH	810'	EAST	SAN JUAN

11. Bottom Hole Location If Different From Surface									
UL or lot no.	Section	Township	Range	Lot Idn	Feet from the	North/South line	Feet from the	East/West line	County
12. Dedicated Acres E/ 324.30		13. Joint or Infill I		14. Consolidation Code		15. Order No.			

NO ALLOWABLE WILL BE ASSIGNED TO THIS COMPLETION UNTIL ALL INTERESTS HAVE BEEN CONSOLIDATED OR A NON-STANDARD UNIT HAS BEEN APPROVED BY THE DIVISION

16		S89°23'W		5319.60'		1		5265.48'(R) 5266.09'(M)		17. OPERATOR CERTIFICATION I hereby certify that the information contained herein is true and complete to the best of my knowledge and belief  Signature: <i>Peggy Cole</i> Printed Name: Peggy Cole Title: Regulatory Supervisor Date: 9-11-01	
5229.84'		4		3		2		2515'		8	
5		28 29 30 31 1 2 3 4 5 6 7 8 9 10 11 12 13 14 15 16 17 18 19 20		SEP 2009 RECEIVED OIL CON. DIV. DIST. 3		7		NM-03187		810'	
12		11		10		9		2632.74'		18. SURVEYOR CERTIFICATION I hereby certify that the well location shown on this plat was plotted from field notes of actual surveys made by me or under my supervision, and that the same is true and correct to the best of my belief. 04/16/01 Date of Survey Signature and Seal of Professional Surveyor: <i>[Signature]</i> Certificate Number: <i>[Number]</i>	
N00°32'W		13		14		15		16 N01°43'W(R) N01°41'50"W(M)			
S89°16'W								5431.80'			

## OPERATIONS PLAN

**Well Name:** Lambe #2C  
**Location:** 2515' FNL, 810' FEL, Sec 20, T-31-N, R-10-W  
San Juan County, NM  
Latitude 36° 53.04, Longitude 107° 53.58  
**Formation:** Blanco Mesaverde/Basin Dakota  
**Elevation:** 6096' GL

<u>Formation Tops:</u>	<u>Top</u>	<u>Bottom</u>	<u>Contents</u>
Surface	San Jose	1238'	
Ojo Alamo	1238'	1318'	aquifer
Kirtland	1318'	2198'	gas
Fruitland	2198'	2833'	gas
Pictured Cliffs	2833'	2933'	gas
Lewis	2933'	3533'	gas
Intermediate TD	3033'		
Mesa Verde	3533'	3883'	gas
Chacra	3883'	4548'	gas
Massive Cliff House	4548'	4648'	gas
Menefee	4648'	5043'	gas
Massive Point Lookout	5043'	5433'	gas
Mancos	5433'	6358'	gas
Gallup	6358'	7067'	gas
Greenhorn	7067'	7128'	gas
Graneros	7128'	7180'	gas
Dakota	7180'		gas
TD	7430'		

### Logging Program:

Cased hole - CBL-CCL-GR - TD to surface  
Open hole - DIL/GR, Density & Neutron Porosity, Bulk  
Density/Correction, Temp - TD to minimum operations depth  
Mudlog - none  
Cores - none

### Mud Program:

<u>Interval</u>	<u>Type</u>	<u>Weight</u>	<u>Vis.</u>	<u>Fluid Loss</u>
0- 200'	Spud	8.4-9.0	40-50	no control
200- 3033'	LSND	8.4-9.0	30-60	no control
3033- 7430'	Air/N2	n/a	n/a	n/a

Pit levels will be visually monitored to detect gain or loss of fluid control.

### Casing Program (as listed, the equivalent, or better):

<u>Hole Size</u>	<u>Depth Interval</u>	<u>Csg. Size</u>	<u>Wt.</u>	<u>Grade</u>
12 1/4"	0' - 200'	9 5/8"	32.3#	H-40
8 3/4"	0' - 3033'	7"	20.0#	J-55
6 1/4"	2933' - 7430'	4 1/2"	10.5#	J-55

### Tubing Program:

0' - 7430'      2 3/8"      4.7#      J-55

### BOP Specifications, Wellhead and Tests:

#### Surface to Intermediate TD -

11" 3000 psi minimum double gate BOP stack (Reference Figure #1).  
After nipple-up prior to drilling out surface casing, rams and casing will be tested to 600 psi for 30 minutes.

#### Intermediate TD to Total Depth -

11" 3000 psi minimum double gate BOP stack (Reference Figure #1).  
After nipple-up prior to drilling out intermediate casing, rams and casing will be tested to 1500 psi for 30 minutes.

**Surface to Total Depth -**

2" nominal, 3000 psi minimum choke manifold (Reference Figure #3).

**Completion Operations -**

7 1/16" 3000 psi double gate BOP stack (Reference Figure #2). After nipple-up prior to completion, pipe rams, casing and liner top will be tested to 2000 psi for 15 minutes.

**Wellhead -**

9 5/8" x 7" x 2 3/8" x 3000 psi tree assembly.

**General -**

- Pipe rams will be actuated once each day and blind rams will be actuated once each trip to test proper functioning.
- An upper kelly cock valve with handle available and drill string valves to fit each drill string will be available on the rig floors at all times.
- BOP pit level drill will be conducted weekly for each drilling crew.
- All BOP tests and drills will be recorded in daily drilling reports.
- Blind and pipe rams will be equipped with extension hand wheels.

**Cementing:**

9 5/8" surface casing - cement with 159 sx Class "B" cement with 1/4# celloflake/sx and 3% calcium chloride (188 cu.ft. of slurry, 200% excess to circulate to surface). WOC 8 hrs. Test casing to 600 psi for 30 minutes.

Saw tooth guide shoe on bottom. Bowspring centralizers will be run in accordance with Onshore Order #2.

**7" intermediate casing -**

Lead w/309 sx 50/50 Class G/TXI lightweight w/2.5% sodium metasilicate, 2% calcium chloride, 10# gilsonite/sx and 1/2# celloflake/sx. Tail w/90 sx 50/50 Class "G" Poz w/2% calcium chloride, 2% gel, 1/4 pps celloflake, 5 pps gilsonite, 0.1% antifoam agent (911 cu.ft. of slurry, 100% excess to circulate to surface.) WOC minimum of 8 hours before drilling out intermediate casing. If cement does not circulate to surface, a CBL will be run during completion operations to determine TOC. Test casing to 1500 psi for 30 minutes.

**See attached alternative intermediate lead slurry.**

7" intermediate casing alternative two stage: Stage collar at 2098'. First stage: cement with 220 sx 50/50 Class "G" Poz w/2% calcium chloride, 2% gel, 1/4 pps celloflake, 5 pps gilsonite, 0.1% antifoam agent. Second stage: 244 sx 50/50 Class G/TXI lightweight w/2.5% sodium metasilicate, 2% calcium chloride, 10# gilsonite/sx and 1/2# celloflake/sx (911 cu.ft., 100% excess to circulate to surface).

Cement nose guide shoe on bottom with float collar spaced on top of shoe joint. Bowspring centralizers spaced every other joint off bottom, to the base of the Ojo Alamo at 1318'. Two turbolating centralizers at the base of the Ojo Alamo at 1318'. Bowspring centralizers spaced every fourth joint from the base of the Ojo Alamo to the base of the surface casing.

## 4 1/2" Production Casing -

Cement to cover minimum of 100' of 4 1/2" x 7" overlap. Lead with 449 sx 50/50 Class "G" Poz with 5% gel, 0.25# celloflake/sx, 5# gilsonite/sx, 0.1% retardant and 0.25% fluid loss additive, 0.15% dispersant, 0.1% antifoam agent (646 cu.ft.), 40% excess to cement 4 1/2" x 7" overlap). WOC a minimum of 18 hrs prior to completing.

4 1/2" production casing alternative: Lead w/183 sx 9.5 PPG Litecrete Blend w/0.11% dispersant, 0.5% fluid loss. Tail w/160 sx Class G 50/50 poz w/5% gel, 0.25 pps celloflake, 5 pps gilsonite, 0.25% fluid loss, 0.15% dispersant, 0.1% retarder, 0.1% antifoam (692 cu.ft., 50% excess to cement 4 1/2" x 7" overlap).

Note: If open hole logs are run, cement volumes will be based on 25% excess over caliper volumes.

Cement float shoe on bottom with float collar spaced on top of float shoe.

Note: To facilitate higher hydraulic stimulation completion work, no liner hanger will be used. In its place, a long string of 4 1/2" casing will be run and cemented with a minimum of 100' of cement overlap between the 4 1/2" x 7" casing strings. After completion of the well, a 4 1/2" retrievable bridge plug will be set below the top of cement in the 4 1/2" x 7" overlap. The 4 1/2" casing will then be backed off above the top of cement in the 4 1/2" x 7" overlap and laid down. The 4 1/2" bridge plug will then be retrieved and the production tubing will be run to produce the well.

- If hole conditions permit, an adequate water spacer will be pumped ahead of each cement job to prevent cement/ mud contamination or cement hydration.

**Special Drilling Operations (Gas/Mist Drilling):**

The following equipment will be operational while gas/mist drilling:

- An anchored blooie line will be utilized to discharge all cuttings and circulating medium to the blow pit a minimum of 100' from the wellhead.
- The blooie line will be equipped with an automatic igniter or pilot light.
- Compressors will be located a minimum of 100' from the wellhead in the opposite direction from the blooie line.
- Engines will have spark arresters or water cooled exhaust.
- Deduster equipment will be utilized.
- The rotating head will be properly lubricated and maintained.
- A float valve will be utilized above the bit.
- Mud circulating equipment, water, and mud materials will be sufficient to maintain control of the well.

Additional Information:

- The Dakota and Mesa Verde formations will be completed and commingled.
- No abnormal temperatures or hazards are anticipated.
- Anticipated pore pressures are as follows:

Fruitland Coal	300 psi
Pictured Cliffs	600 psi
Mesa Verde	700 psi
Dakota	2500 psi
- Sufficient LCM will be added to the mud system to maintain well control, if lost circulation is encountered.
- The east half of Section 20 is dedicated to the Mesa Verde and Dakota in this well.
- This gas is dedicated.

Brennan D. Shurt  
Drilling Engineer

9/11/2001  
Date

## **Alternative Intermediate Lead Slurry**

### **Dowell-**

Class G: D49(50:50) w/ 2.5% D79, 2% S1, 10pps D24, .5pps D29, .2%D46

where: D49-TXI Light weight Cement

D79-Sodium Metasilicate

S1-Calcium Chloride

D24-Gilsonite

D46-Antifoam Agent

### **Properties-**

Density:11.4 lb/gal

Yield:2.58 cu ft./sk

Water:14.55 gal/sk

Thick Time 70 b.c.(deg F): 4:06(101)

Free Water:0

Fluid Loss:462ml/30 min

CS(crush)@24hr:394

CS(crush)@48hr:550

### **Halliburton-**

Class H 47#/sk, 37#/sk Blended Silicalite, 3% Bentonite, 4% Calcium Chloride

### **Properties-**

Density:11.4 lb/gal

Yield:2.42 cu.ft./sk

Water:14.02 gal/sk

Thick Time(70 bc): 11:00+

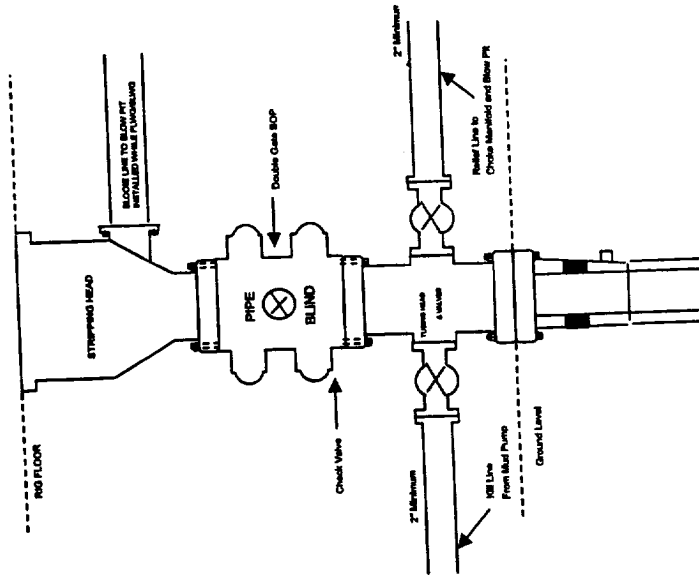
Fluid Loss: 702 cc/30min

Free Water: 0%

Compressive Strength (@25:19) :500

Compressive Strength (@48:00) :630

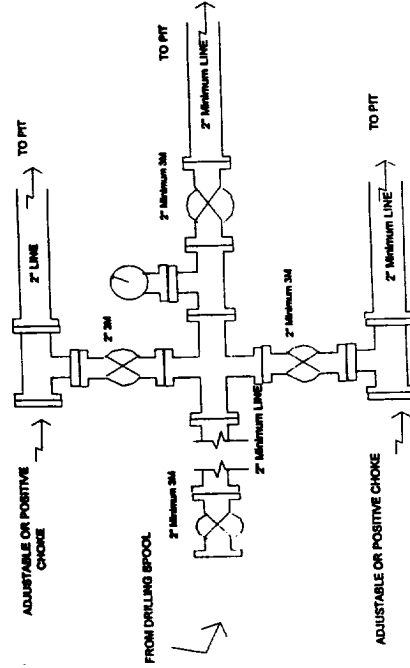
Completion/Workover Rig  
BOP Configuration  
3,000 psi System



Minimum BOP installation for all Completion/Workover Operations. 7-1/16" bore, 3000 psi minimum working pressure double gate BOP to be equipped with blind and pipe rams. A stripping head to be installed on the top of the BOP. All BOP equipment is 3000 psi working pressure or greater excluding 500 psi stripping head.

Figure #3

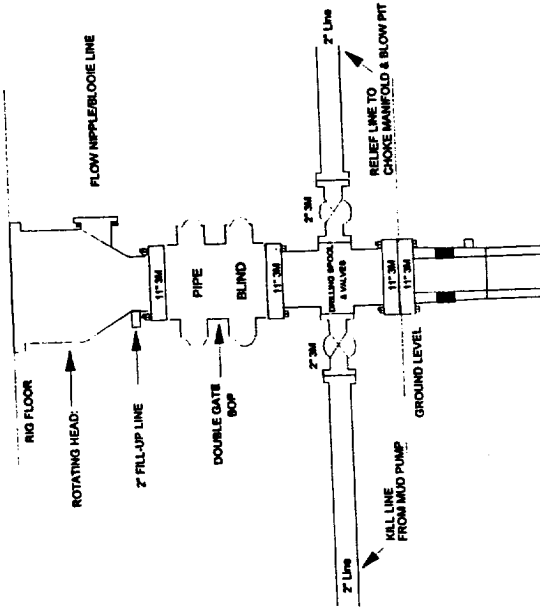
Drilling Rig  
Choke Manifold Configuration  
3000 psi System



Choke manifold installation from Surface Casing Point to Total Depth. 3,000psi working pressure equipment with two chokes.

Figure #2

Drilling Rig  
3000 psi System



BOP installation from Surface Casing Point to Total Depth. 11" Bore 10" Nominal, 3000 psi working pressure double gate BOP to be equipped with blind rams and pipe rams. A 500 psi stripping head on top of ram preventers. All BOP equipment is 3,000 psi working pressure.

Figure #1



submitted in lieu of Form 3160-5

UNITED STATES  
DEPARTMENT OF THE INTERIOR  
BUREAU OF LAND MANAGEMENT

Sundry Notices and Reports on Wells

1. Type of Well  
GAS

2. Name of Operator

**BURLINGTON  
RESOURCES**

OIL & GAS COMPANY

3. Address & Phone No. of Operator

PO Box 4289, Farmington, NM 87499 (505) 326-9700

4. Location of Well, Footage, Sec., T, R, M

1965' FNL, 830' FEL, Sec.20, T-31-N, R-10-W, NMPM

5. Lease Number  
NM-03187

6. If Indian, All. or  
Tribe Name

7. Unit Agreement Name

8. Well Name & Number  
Lambe 2C

9. API Well No.  
30-045-30747

10. Field and Pool  
Blanco MV/Basin DK

11. County and State  
San Juan Co, NM

12. CHECK APPROPRIATE BOX TO INDICATE NATURE OF NOTICE, REPORT, OTHER DATA

Type of Submission

☒ Notice of Intent

☐ Subsequent Report

☐ Final Abandonment

Type of Action

☐ Abandonment

☐ Recompletion

☐ Plugging Back

☐ Casing Repair

☐ Altering Casing

☐ Other -

☒ Change of Plans

☐ New Construction

☐ Non-Routine Fracturing

☐ Water Shut off

☐ Conversion to Injection

13. Describe Proposed or Completed Operations

The location of the subject well has been moved. Attached is the revised C-102 plat, cut & fill diagram, and topo map.

14. I hereby certify that the foregoing is true and correct.

Signed [Signature] Title Regulatory Supervisor Date 12/10/01  
fsb

(This space for Federal or State Office use)

APPROVED BY [Signature] Title FE Date 2/7/02

CONDITION OF APPROVAL, if any:

Title 18 U.S.C. Section 1001, makes it a crime for any person knowingly and willfully to make to any department or agency of the United States any false, fictitious or fraudulent statements or representations as to any matter within its jurisdiction.

NMAOCL

DISTRICT I  
1625 N. French Dr., Hobbs, N.M. 88240

DISTRICT II  
611 South First, Artesia, N.M. 88210

DISTRICT III  
1000 Rio Brazos Rd., Aztec, N.M. 87410

DISTRICT IV  
2040 South Pacheco, Santa Fe, NM 87505

State of New Mexico  
Energy, Minerals & Natural Resources Department

Form C-102  
Revised August 15, 2000

OIL CONSERVATION DIVISION

2040 South Pacheco  
Santa Fe, NM 87505

Submit to Appropriate District Office  
State Lease - 4 Copies  
Fee Lease - 3 Copies

☐ AMENDED REPORT

WELL LOCATION AND ACREAGE DEDICATION PLAT

<sup>1</sup> API Number 30-045-30747	<sup>2</sup> Pool Code 72319/71599	<sup>3</sup> Pool Name Blanco Mesaverde/Basin Dakota
<sup>4</sup> Property Code	<sup>5</sup> Property Name LAMBE	<sup>6</sup> Well Number 2C
<sup>7</sup> GRID No. 14538	<sup>8</sup> Operator Name BURLINGTON RESOURCES OIL & GAS, INC.	<sup>9</sup> Elevation 6085'

<sup>10</sup> Surface Location

UL or lot no.	Section	Township	Range	Lot Idn	Feet from the	North/South line	Feet from the	East/West line	County
H	20	31-N	10-W		1965	NORTH	830	EAST	SAN JUAN

<sup>11</sup> Bottom Hole Location If Different From Surface

UL or lot no.	Section	Township	Range	Lot Idn	Feet from the	North/South line	Feet from the	East/West line	County
<sup>12</sup> Dedicated Acres E/324.30			<sup>13</sup> Joint or Infill		<sup>14</sup> Consolidation Code		<sup>15</sup> Order No.		

NO ALLOWABLE WILL BE ASSIGNED TO THIS COMPLETION UNTIL ALL INTERESTS HAVE BEEN CONSOLIDATED  
OR A NON-STANDARD UNIT HAS BEEN APPROVED BY THE DIVISION

16	FD 3 1/4" BLM BC.1968	S 89-20-12 W 2660.33' (M)	FD 3 1/4" BLM BC.1968
Reissued to Show Moved Location LOT 4	LOT 3	LOT 2	LOT 1
LOT 5	LOT 6	LOT 7	LOT 8
LOT 12	LOT 11	LOT 10 LAT. 36°53'09.3" N LONG. 107°53'55.7" W. (N.A.D. 1927)	LOT 9
LOT 13	LOT 14	LOT 15	LOT 16

17 OPERATOR CERTIFICATION

I hereby certify that the information contained herein is true and complete to the best of my knowledge and belief.

*Peggy Cole*  
Signature

Peggy Cole

Printed Name

Regulatory Supervisor

Title

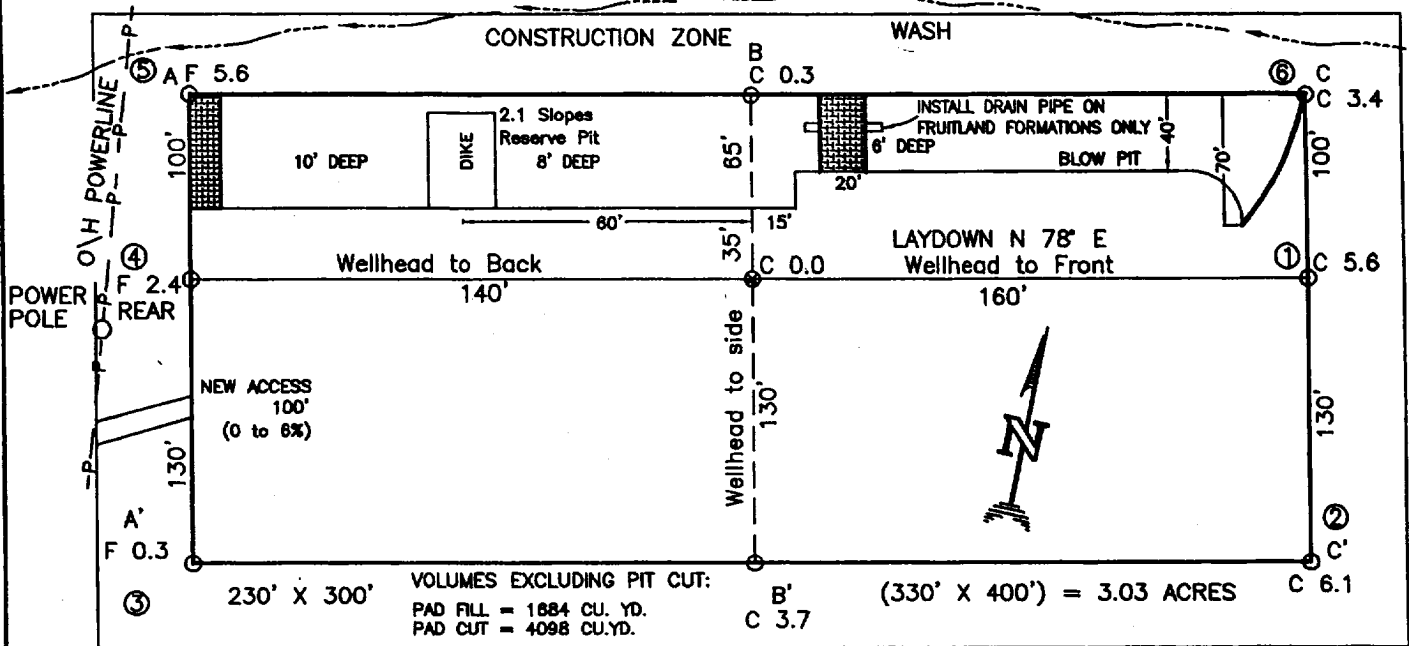
12-10-01  
Date

18 SURVEYOR CERTIFICATION

I hereby certify that the well location shown on this was plotted from field notes of actual surveys made by me or under my supervision, and that the same is true and correct to the best of my knowledge and belief.

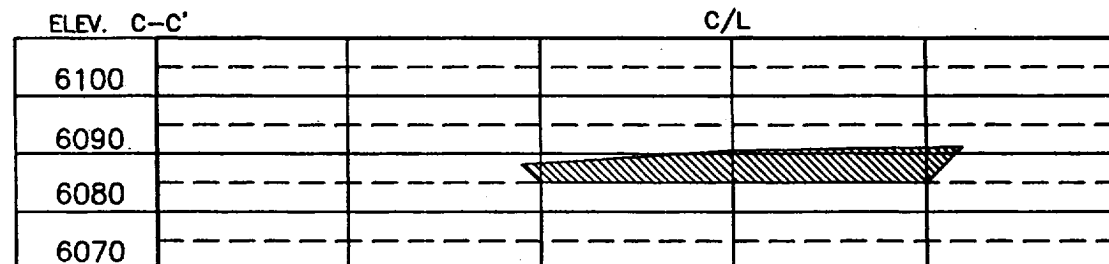
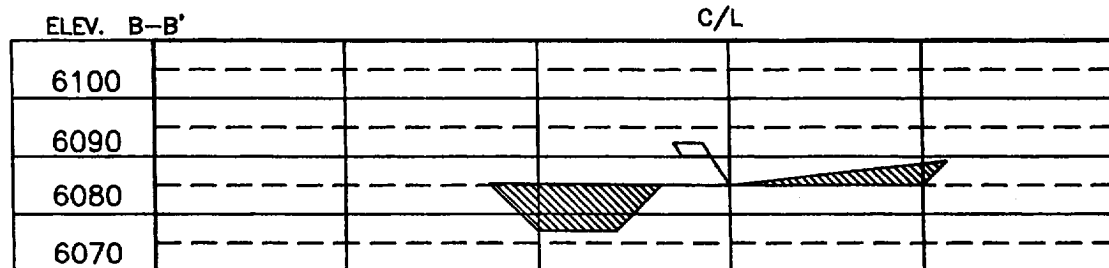
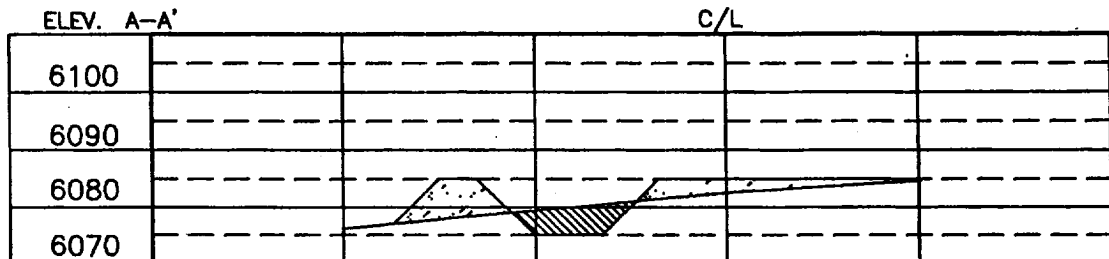
11-16  
Date of Survey  
Signature  
8894  
Certificate Number

BURLINGTON RESOURCES OIL & GAS INC.  
 LAMBE No. 2C, 1965 FNL 830 FEL  
 SECTION 20, T-31-N, R-10-W, N.M.P.M., SAN JUAN COUNTY, NEW MEXICO  
 GROUND ELEVATION: 6085', DATE: NOVEMBER 6, 2001



RESERVE PIT DIKE: TO BE 8' ABOVE DEEP SIDE (OVERFLOW - 3' WIDE AND 1' ABOVE SHALLOW SIDE).  
 BLOW PIT: OVERFLOW PIPE HALFWAY BETWEEN TOP AND BOTTOM AND TO EXTEND OVER PLASTIC LINER AND INTO BLOW PIT.

NOTE: DAGGETT ENTERPRISES, INC. IS NOT LIABLE FOR UNDERGROUND UTILITIES OR PIPELINES. NEW MEXICO ONE CALL TO BE NOTIFIED 48 HOURS PRIOR TO EXCAVATION OR CONSTRUCTION.



NOTE: CONTRACTOR SHOULD CALL ONE-CALL FOR LOCATION OF ANY MARKED OR UNMARKED BURIED PIPELINES OR CABLES ON WELL PAD AND OR ACCESS ROAD AT LEAST TWO (2) WORKING DAYS PRIOR TO CONSTRUCTION.

DRAWN BY: A.G. ROW#: BR320 CADFILE: BR320CFB DATE: 11/15/01

# BURLINGTON RESOURCES OIL & GAS, INC.

LAMBE No. 2C

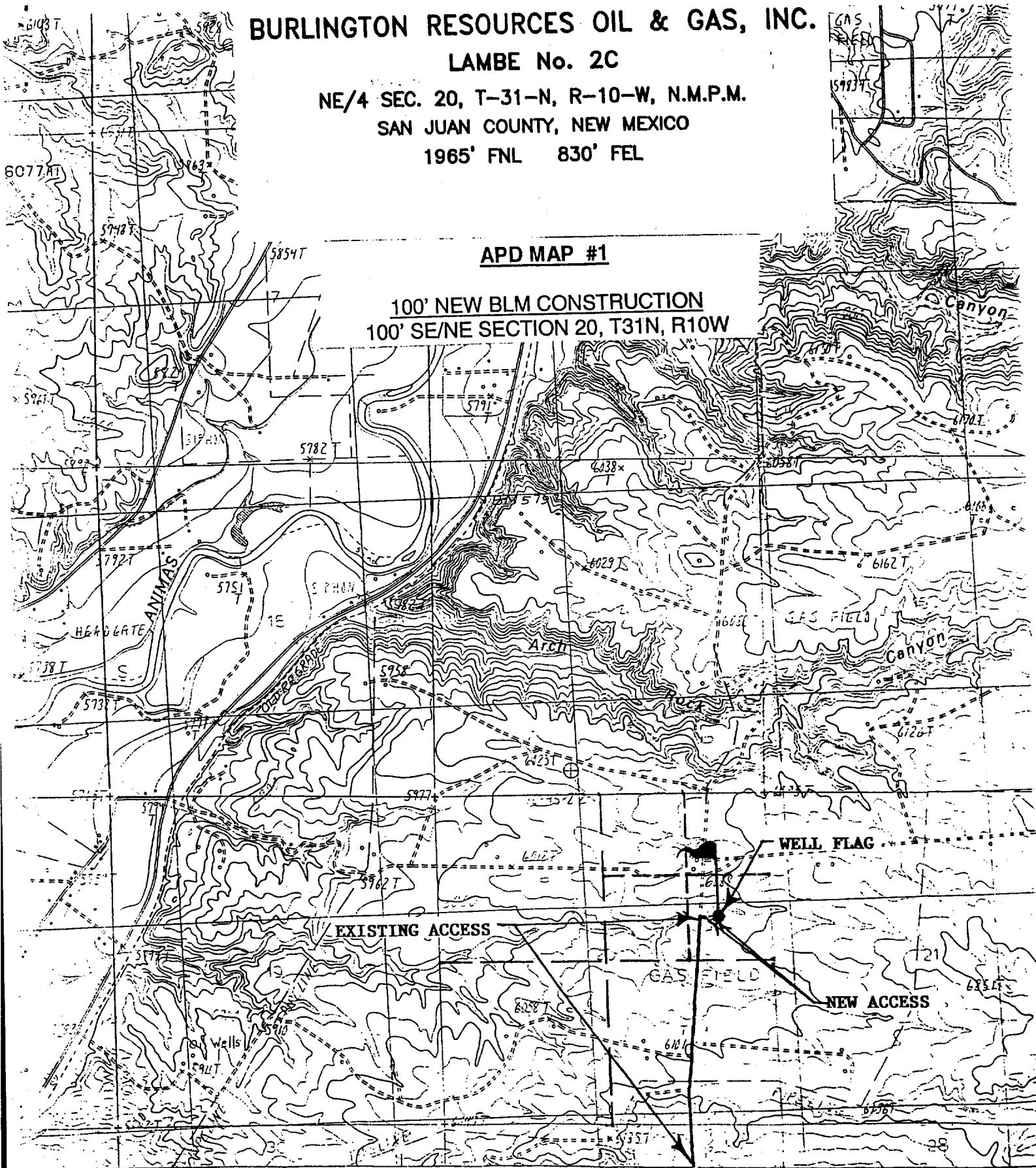
NE/4 SEC. 20, T-31-N, R-10-W, N.M.P.M.

SAN JUAN COUNTY, NEW MEXICO

1965' FNL 830' FEL

## APD MAP #1

100' NEW BLM CONSTRUCTION  
100' SE/NE SECTION 20, T31N, R10W



11 W 10 W 239 55' 241 242 243000-E  
1:24 000

6000 7000 8000 9000 10 000  
2  
7000



QUADRANGLE LOCATION

Improved Road . . . . .  
Unimproved Road . . . . .  
Trail . . . . .

UNITED STATES  
DEPARTMENT OF THE INTERIOR  
BUREAU OF LAND MANAGEMENT

FORM APPROVED  
OMB NO. 1004-0135  
Expires: November 30, 2000

**SUNDRY NOTICES AND REPORTS ON WELLS**  
*Do not use this form for proposals to drill or to re-enter an abandoned well. Use form 3160-3 (APD) for such proposals.*

**SUBMIT IN TRIPLICATE - Other instructions on reverse side.**

1. Type of Well <input type="checkbox"/> Oil Well <input checked="" type="checkbox"/> Gas Well <input type="checkbox"/> Other		8. Well Name and No. LAMBE 2C
2. Name of Operator BURLINGTON RESOURCES O&G CO LP		9. API Well No. 30-045-30747-00-X1
3a. Address P O BOX 4289 FARMINGTON, NM 87499	Contact: PEGGY COLE E-Mail: pcole@br-inc.com	10. Field and Pool, or Exploratory BLANCO MESAVERDE
4. Location of Well (Footage, Sec., T., R., M., or Survey Description) Sec 20 T31N R10W SENE 2515FNL 810FEL		11. County or Parish, and State SAN JUAN COUNTY, NM

12. CHECK APPROPRIATE BOX(ES) TO INDICATE NATURE OF NOTICE, REPORT, OR OTHER DATA

TYPE OF SUBMISSION	TYPE OF ACTION			
<input checked="" type="checkbox"/> Notice of Intent	<input type="checkbox"/> Acidize	<input type="checkbox"/> Deepen	<input type="checkbox"/> Production (Start/Resume)	<input type="checkbox"/> Water Shut-Off
<input type="checkbox"/> Subsequent Report	<input type="checkbox"/> Alter Casing	<input type="checkbox"/> Fracture Treat	<input type="checkbox"/> Reclamation	<input type="checkbox"/> Well Integrity
<input type="checkbox"/> Final Abandonment Notice	<input type="checkbox"/> Casing Repair	<input type="checkbox"/> New Construction	<input type="checkbox"/> Recomplete	<input checked="" type="checkbox"/> Other
	<input type="checkbox"/> Change Plans	<input type="checkbox"/> Plug and Abandon	<input type="checkbox"/> Temporarily Abandon	Change to Original A
	<input type="checkbox"/> Convert to Injection	<input type="checkbox"/> Plug Back	<input type="checkbox"/> Water Disposal	PD

13. Describe Proposed or Completed Operation (clearly state all pertinent details, including estimated starting date of any proposed work and approximate duration thereof. If the proposal is to deepen directionally or recompleat horizontally, give subsurface locations and measured and true vertical depths of all pertinent markers and zones. Attach the Bond under which the work will be performed or provide the Bond No. on file with BLM/BIA. Required subsequent reports shall be filed within 30 days following completion of the involved operations. If the operation results in a multiple completion or recompleat in a new interval, a Form 3160-4 shall be filed once testing has been completed. Final Abandonment Notices shall be filed only after all requirements, including reclamation, have been completed, and the operator has determined that the site is ready for final inspection.)

Please extend our application for permit to drill the subject well.

-This approval expires:

14. I hereby certify that the foregoing is true and correct. <b>Electronic Submission #14120 verified by the BLM Well Information System For BURLINGTON RESOURCES O&amp;G CO LP, sent to the Farmington Committed to AFMSS for processing by Adrienne Garcia on 09/12/2002 (02AXG0640SE)</b>	
Name (Printed/Typed) PEGGY COLE	Title REGULATORY ADMINISTRATOR
Signature (Electronic Submission)	Date 09/10/2002

**THIS SPACE FOR FEDERAL OR STATE OFFICE USE**

Approved By _____	Title _____	Date _____
Conditions of approval, if any, are attached. Approval of this notice does not warrant or certify that the applicant holds legal or equitable title to those rights in the subject lease which would entitle the applicant to conduct operations thereon.		Office _____

Title 18 U.S.C. Section 1001 and Title 43 U.S.C. Section 1212, make it a crime for any person knowingly and willfully to make to any department or agency of the United States any false, fictitious or fraudulent statements or representations as to any matter within its jurisdiction.

**\*\* REVISED \*\* REVISED \*\* REVISED \*\* REVISED \*\* REVISED \*\* REVISED \*\* REVISED \*\***

**NMOCD**