

SUBMIT IN TRIPLICATE*
(Other instructions on
reverse side)

Form approved.
Budget Bureau No. 1004-0136
Expires December 31, 1991

**UNITED STATES
DEPARTMENT OF THE INTERIOR
BUREAU OF LAND MANAGEMENT**

2001 OCT 11 AM 4:27

5. LEASE DESIGNATION AND SERIAL NO.

NM-03189

6. IF INDIAN, ALLOTTEE OR TRIBE NAME

17036

7. UNIT AGREEMENT NAME

Cox Canyon

8. FARM OR LEASE NAME, WELL NO.

#3B

9. API WELL NO.

30045 30871

10. FIELD AND POOL OR WILDCAT

Blanco Mesa Verde

11. SEC., T., R., M. OR BLK.
AND SURVEY OR AREA

Sec. 9, T32N, R11W

12. COUNTY OR PARISH

San Juan

13. STATE

NM

17. NO. OF ACRES ASSIGNED TO THIS WELL

336.4

20. ROTARY OR CABLE TOOLS

Rotary

22. APPROX. DATE WORK WILL START*

December 1, 2001

APPLICATION FOR PERMIT TO DRILL, DEEPEN, OR PLUG BACK

1a. TYPE OF WORK

DRILL ☒

DEEPEN ☐

1b. TYPE OF WELL

OIL WELL ☐

GAS WELL ☒

OTHER ☐

SINGLE ZONE ☒

MULTIPLE ZONE ☐

2. NAME OF OPERATOR

Williams Production Company LLC

3. ADDRESS OF OPERATOR

c/o Walsh Engineering 7415 E. Main St., Farmington, NM 87402 (505) 327-4892

4. LOCATION OF WELL (Report location clearly and in accordance with any State requirements.)*

At Surface 2105' FSL & 2220' FEL

At proposed Prod. Zone

14. DISTANCE IN MILES AND DIRECTION FROM NEAREST TOWN OR POST OFFICE*

12 miles North of Aztec, NM

15. DISTANCE FROM PROPOSED* LOCATION TO NEAREST PROPERTY OR LEASE LINE, FT. (Also to nearest drlg. unit line, if any)

660'

16. NO. OF ACRES IN LEASE

1384.60

19. PROPOSED DEPTH

6050'

18. DISTANCE FROM PROPOSED LOCATION* TO NEAREST WELL, DRILLING, COMPLETED, OR APPLIED FOR ON THIS LEASE, FT.

~1300'

21. ELEVATIONS (Show whether DF, RT, GR, etc.)

6586'

PROPOSED CASING AND CEMENTING PROGRAM

| SIZE OF HOLE | SIZE OF CASING | WEIGHT/FOOT | SETTING DEPTH | QUANTITY OF CEMENT |
|--------------|----------------|-------------|--------------------|--|
| 12-1/4" | 9-5/8" | 36# | ~250 ft | ~313 cu.ft. Type III with 2% CaCl ₂ |
| 8-3/4" | 7" | 20# | ~3700 ft | ~826 cu.ft. 65/35 poz & ~292 cu.ft. Type III |
| 6-1/4" | 4-1/2" | 10.5# | ~3600 ft - 6050 ft | ~378 cu.ft. Premium Light HS w/ additives |

Williams Production Company proposes to drill a vertical well to develop the Mesa Verde formation at the above described location in accordance with the attached drilling and surface use plans.

This location has been archaeologically surveyed by Independent Contract Archaeology. Copies of their report have been submitted directly to your office.

This APD also is serving as an application to obtain BLM road and pipeline right-of-ways. This well will be accessed by an existing road that crosses the SE NW, NE/SW, SE/SW of section 9, the NW/NE, NE/NE of section 16, NW/NW of section 15, SW/SW, SE/SW, SW/SE of section 10, NW/NE, NE/NE of section 15, NW/NW, SW/NW, NW/SW, NE/SW, NW/SE, SE/SE of section 14, SW/SW, SE/SW of section 13, NW/NE, NE/NE of section 24, SW/NW, SE/NW, NW/SE, SW/SE of section 19, NE/NE of section 30 all of T32N R11W where it joins San Juan County Road CR 2300.

IN ABOVE SPACE DESCRIBE PROPOSED PROGRAM: If proposal is to deepen or plug back, give data on present productive zone and proposed new productive zone. If proposal is to drill or deepen directionally, give pertinent data on subsurface locations and measured and true vertical depths. Give blowout preventer program, if any.

24. SIGNED [Signature] TITLE John C. Thompson, Agent DATE 10/9/01

(This space for Federal or State office use)

PERMIT NO.

APPROVAL DATE

11/10/01

Application approval does not warrant or certify that the applicant holds legal or equitable title to those rights in the subject lease which would entitle the applicant to conduct operations thereon.

CONDITIONS OF APPROVAL, IF ANY:

APPROVED BY

/s/ Jim Lovato

TITLE

DATE

***See Instructions On Reverse Side**

Title 18 U.S.C. Section 1001, makes it a crime for any person knowingly and willfully to make to any department or agency of the United States any false, fictitious or fraudulent statements or representations as to any matter within its jurisdiction.

NMCCD

District I
PO Box 1980, Hobbs, NM 88241-1980

State of New Mexico
Energy, Minerals & Natural Resources Department

Form C-102
Revised February 21, 1994

District II
PO Drawer DD, Artesia, NM 88211-0719

Instructions on back
Submit to Appropriate District Office
State Lease - 4 Copies
Fee Lease - 3 Copies

District III
1000 Rio Brazos Rd., Aztec, NM 87410

OIL CONSERVATION DIVISION
PO Box 2088
Santa Fe, NM 87504-2088

☐ AMENDED REPORT

District IV
PO Box 2088, Santa Fe, NM 87504-2088

WELL LOCATION AND ACREAGE DEDICATION PLAT

| | | | |
|------------------------------------|--|----------------------------|---------------------------------------|
| *API Number 30-045-30871 | | *Pool Code 72319 | *Pool Name BLANCO MESAVERDE |
| *Property Code 17036 | *Property Name COX CANYON <i>Unit</i> | | *Well Number 38 |
| *GRID No. 120782 | *Operator Name WILLIAMS PRODUCTION COMPANY | | *Elevation 6586' |

10 Surface Location

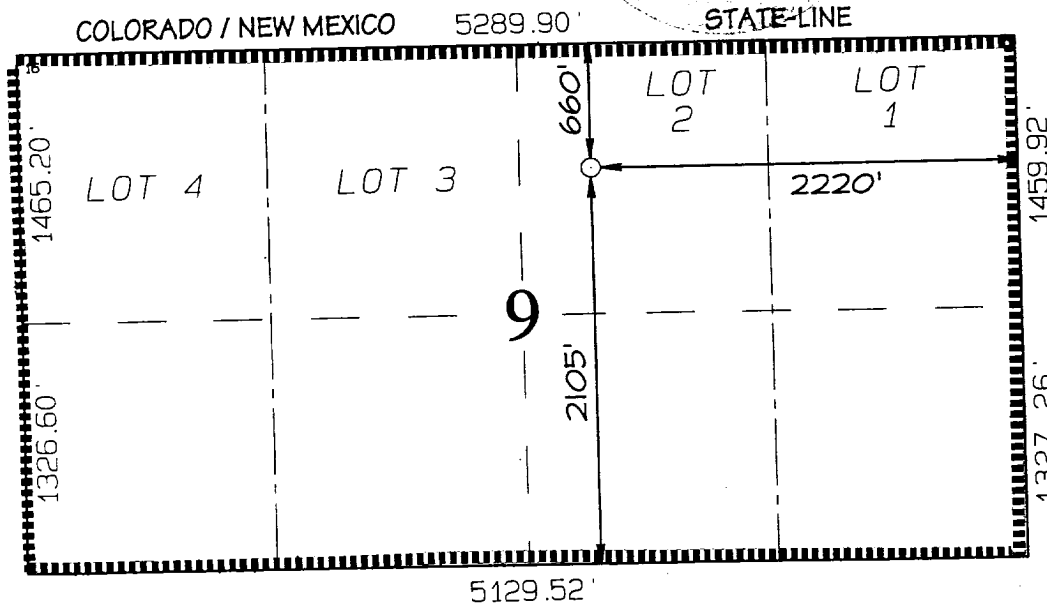
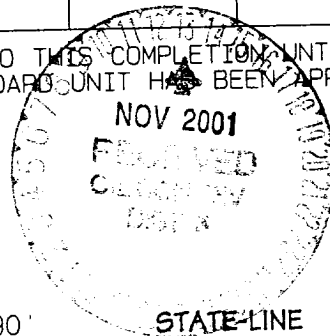
| UL or lot no. | Section | Township | Range | Lot Idn | Feet from the | North/South line | Feet from the | East/West line | County |
|---------------|---------|----------|-------|---------|---------------|------------------|---------------|----------------|----------|
| J | 9 | 32N | 11W | | 2105 | SOUTH | 2220 | EAST | SAN JUAN |

11 Bottom Hole Location If Different From Surface

| UL or lot no. | Section | Township | Range | Lot Idn | Feet from the | North/South line | Feet from the | East/West line | County |
|---------------|---------|----------|-------|---------|---------------|------------------|---------------|----------------|--------|
| | | | | | | | | | |

| | | | |
|---|--------------------|-----------------------|--------------|
| 12 Dedicated Acres 336.40 Acres | 13 Joint or Infill | 14 Consolidation Code | 15 Order No. |
|---|--------------------|-----------------------|--------------|

NO ALLOWABLE WILL BE ASSIGNED TO THIS COMPLETION UNTIL ALL INTERESTS HAVE BEEN CONSOLIDATED OR A NON-STANDARD UNIT HAS BEEN APPROVED BY THE DIVISION



17 OPERATOR CERTIFICATION

I hereby certify that the information contained herein is true and complete to the best of my knowledge and belief

Signature

John C. Thompson

Printed Name

Engineer/Agent

Title

10/9/01

Date

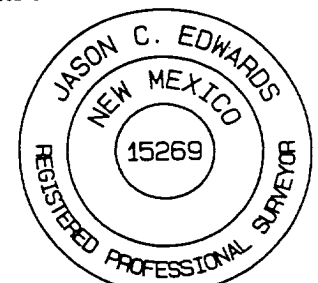
18 SURVEYOR CERTIFICATION

I hereby certify that the well location shown on this plat was plotted from field notes of actual surveys made by me or under my supervision, and that the same is true and correct to the best of my belief.

Revised: OCTOBER 8, 2001

Date of Survey: MAY 1, 2001

Signature and Seal of Professional Surveyor



JASON C. EDWARDS

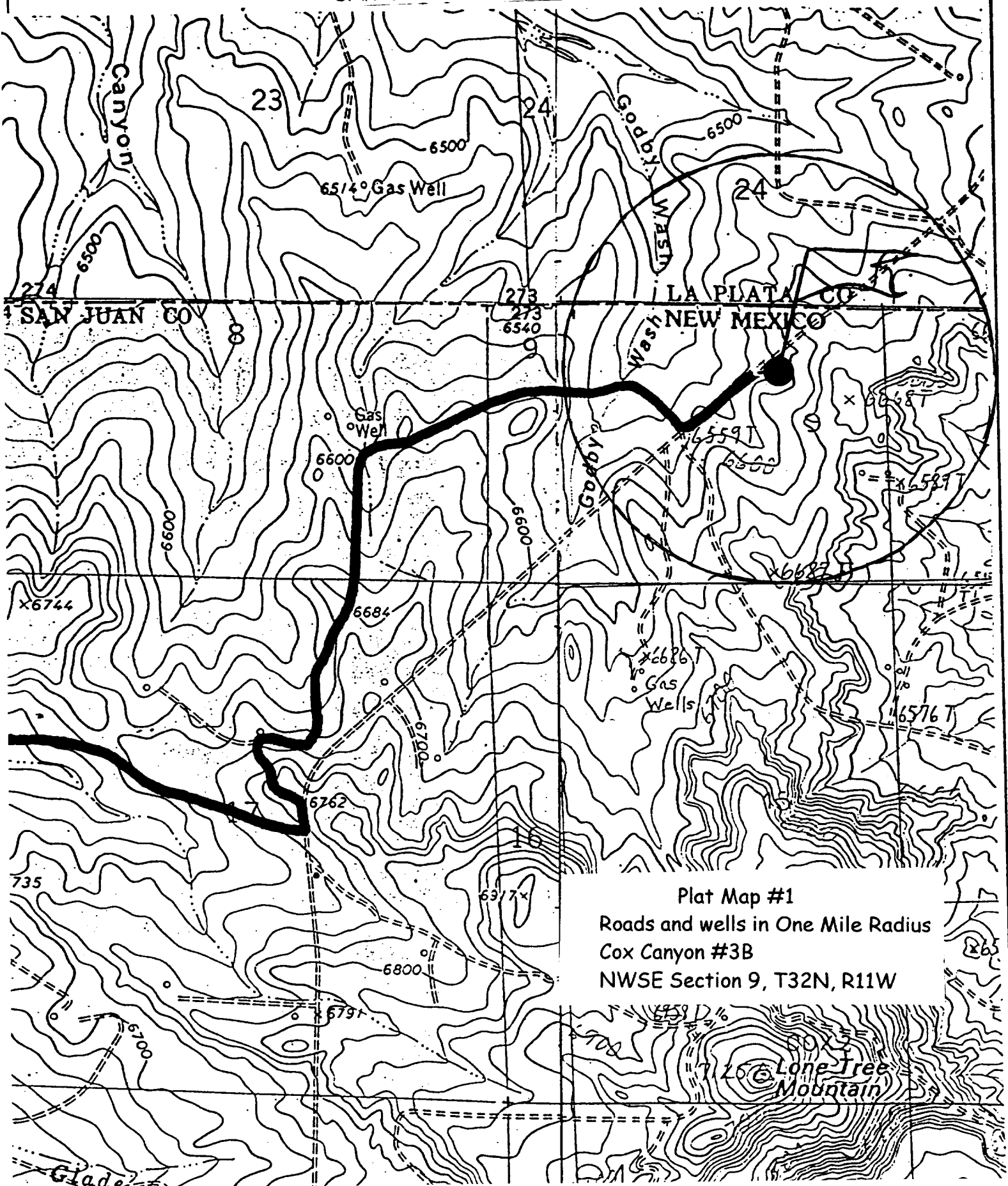
Certificate Number

15269

WILLIAMS PRODUCTION COMPANY COX CANYON #3B

2105' FSL & 2220' FEL, SECTION 9, T32N, R11W, N.M.P.M.

SAN JUAN COUNTY, NEW MEXICO



III. MATERIALS

A. CASING PROGRAM:

| <u>CASING TYPE</u> | <u>HOLE SIZE</u> | <u>DEPTH</u> | <u>CASING SIZE</u> | <u>WT. & GRADE</u> |
|--------------------|------------------|-------------------|--------------------|------------------------|
| Surface | 12-1/4" | +/- 250' | 9-5/8" | 36# K-55 |
| Intermediate | 8-3/4" | +/- 3700' | 7" | 20# K-55 |
| Prod. Liner | 6-1/4" | +/- 3600' - 6050' | 4-1/2" | 10.5# K-55 |

B. FLOAT EQUIPMENT:

1. SURFACE CASING: 9-5/8" notched regular pattern guide shoe. Run (1) standard centralizer on each of the bottom (3) joints of Surface Casing (unless hole is "sluffing", then run casing slick).
2. INTERMEDIATE CASING: 7" cement nose guide shoe with a self-fill insert float. Place float collar one joint above the shoe. Install five (5) Regular centralizers spaced every other joint, starting with the float collar. Install Turbulent centralizers every 120' from 2900' to surface casing. Total centralizers = (5) regular and (24) turbulent.
3. PRODUCTION CASING: 4-1/2" whirler type cement nose guide shoe with a latch collar on top of 20" bottom joint. Place marker joint above 5100'

C. CEMENTING:

(Note: Volumes may be adjusted onsite due to actual conditions)

1. SURFACE: Slurry: 255sx (313 cu.ft.) of "Type III" + 2% CaCl₂ + 1/4 # of cello-flake/sk (Yield = 1.39 cu.ft./sk, Weight = 14.5 #/gal.). The 125% excess should circulate cement to the surface. WOC 12 hours (before drilling out). Test csg to 1500psi.
2. INTERMEDIATE: Lead: 395sx (826 ft³) of "Premium Lite" 65/35, Type III poz, w/ 8% gel and 1/4 # cello-flake/sk (Yield = 2.09 ft³/sk, Weight = 12.1 #/gal.). Tail: 210sx (292 ft³) of class "Type III" w/ 1/4 # cello-flake/sk. (Yield = 1.39 ft³/sk, Weight = 14.5#/gal.). The 100% excess in lead and tail should circulate cement to the surface. Total volume = 1113 ft³. WOC 12 hours. Run a temperature survey after 8 hours if cement is not circulated to the surface. Test csg. to 1500psi.
3. PRODUCTION LINER: Scavenger Slurry: 50sx of Premium Light HS w/ 1% FL-52, 0.2% CD-32 and 0.1% R3. (Weight = 11.5#/gal). Cement Slurry: 190 sx (378 ft³) of Premium Light HS, 1% FL-52, 0.2% CD-32, 0.25#/sk celloflake, 4% Phenoseal, and 0.1% R3. (Yield = 1.99 cu.ft./sk, Weight = 12.5 #/gal.). Displace cement at a minimum of 8 BPM. The 50% excess to cover cement 100' above liner top. Total volume: 378ft³. WOC 12 hours.

IV COMPLETION

A. CBL

1. Run Cement Bond Log across all intervals to be perforated and find Top of Cement behind all casing strings.

B. PRESSURE TEST

1. Pressure test 7" & 4-1/2" casing to 3300# for 15 minutes.

Walsh Engineering & Production

Well Control Equipment Schematic for 2M Service

Attachment to Drilling Technical Program

Typical Mesaverde/Dakota BOP setup

Location: San Juan Basin, New Mexico

Date: August 20, 2001

By: John Thompson

