

District I
PO Box 1980, Hobbs, NM 88241-1980
District II
811 S. 1st Street, Artesia, NM 88210-2834
District III
1000 Rio Brazos Rd., Aztec, NM 87410
District IV
2040 South Pacheco, Santa Fe, NM 87505

State of New Mexico
Energy, Minerals & Natural Resources Department

OIL CONSERVATION DIVISION
2040 South Pacheco
Santa Fe, NM 87505

Form C-101
Revised October 18, 1999
Instructions on back
Submit to Appropriate District Office
State Lease - 6 Copies
Fee Lease - 5 Copies

☐ AMENDED REPORT

APPLICATION FOR PERMIT TO DRILL, RE-ENTER, DEEPEN, PLUGBACK, OR ADD A ZONE

¹ Operator name and Address XTO Energy Inc. 2700 Farmington Ave., Bldg. K. Ste 1 Farmington, NM 87401		² OGRID Number 167067
⁴ Property Code 22818	⁵ Property Name STATE GAS COM "BA"	³ API Number 30-0 45 31060
		⁶ Well No. #1F

⁷ Surface Location

UL or lot no.	Section	Township	Range	Lot. Idn	Feet from the	North/South Line	Feet from the	East/West line	County
C	16	31N	12W		747'	North	1,548'	West	San Juan

⁸ Proposed Bottom Hole Location If Different From Surface

UL or lot no.	Section	Township	Range	Lot. Idn	Feet from the	North/South Line	Feet from the	East/West line	County
⁹ Proposed Pool 1 Basin Dakota					¹⁰ Proposed Pool 2 Blanco Mesaverde				

¹¹ Work Type Code N	¹² Well Type Code G	¹³ Cable/Rotary R	¹⁴ Lease Type Code State	¹⁵ Ground Level Elevation 6,166' Ground Level
¹⁶ Multiple Yes	¹⁷ Proposed Depth 7,550'	¹⁸ Formation Dakota/Mesaverde	¹⁹ Contractor Bearcat Drilling	²⁰ Spud Date Summer, 2002

²¹ Proposed Casing and Cement Program

Hole Size	Casing Size	Casing weight/foot	Setting Depth	Sacks of Cement	Estimated TOC
12-1/4"	9-5/8"	32.3#/ft	260'	+120 sx	Surface
8-3/4"	7"	20.0 #/ft	3,000'	+375 sx	Surface
6-1/4"	4-1/2"	10.5 #/ft	7,550'	+400 sx	2,800'

²² Describe the proposed program. If this application is to DEEPEN or PLUG BACK give the data on the present productive zone and proposed new productive zone. Describe the blowout prevention program, if any. Use additional sheets if necessary.

Drill to 260'. Cmt 9-5/8" csg w/120 sx Type III cmt w/2% CC & 1/4#/sx cello (14.5 ppg, 1.39 cuft, 6.8 gal/sx).
Set 7" intermediate @ 3,000'. Cmt w/275 sx Premium lite (65/35) w/6% gel & 1/4#/sx cello (12.5 ppg, 2.01 cuft, 10.78 gal/sx) followed by 100 sx Type III w/2% CC & 1/4#/sx cello (14.5 ppg, 1.39 cuft, 6.8 gal/sx).
Set 4-1/2" @ 7,550'. cmt w/250 sx C1 H w/2% econolite & 1/4#/sx cello (11.8 ppg, 2.45 cuft, 14.7 gal/sx) followed by 150 sx C1 H w/fluidloss, dispersant & 1/4#/sx cello (15.6 ppg, 1.18 cuft, 5.2 gal/sx).
Final volume will be obtained from caliper log +35%. See attached BOP diagram.

²³ I hereby certify that the information given above is true and complete to the best of my knowledge and belief.

Signature:

Printed name: Jeffrey W. Patton

Title: Drilling Engineer

OIL CONSERVATION DIVISION

Approved by:

Title:

Approval Date:

Expiration Date:

APR 11 2002

APR 11 2003

Replaces
State gas can #1B
which expired

DISTRICT I
P.O. Box 1980, Hobbs, N.M. 88241-1980

DISTRICT II
P.O. Drawer DD, Artesia, N.M. 88211-0719

DISTRICT III
1000 Rio Brazos Rd., Aztec, N.M. 87410

DISTRICT IV
PO Box 2088, Santa Fe, NM 87504-2088

State of New Mexico
Energy, Minerals & Natural Resources Department

OIL CONSERVATION DIVISION
P.O. Box 2088
Santa Fe, NM 87504-2088

Form C-102
Revised February 21, 1994
Instructions on back
Submit to Appropriate District Office
State Lease - 4 Copies
Fee Lease - 3 Copies

☐ AMENDED REPORT

WELL LOCATION AND ACREAGE DEDICATION PLAT

¹ API Number 30-045-31060	² Pool Code 72319	³ Pool Name BLANCO MESAVERDE
⁴ Property Code 22818	⁵ Property Name STATE BA	⁶ Well Number 1F
⁷ OGRID No. 167067	⁸ Operator Name CROSS TIMBERS OPERATING CO.	⁹ Elevation 6166'

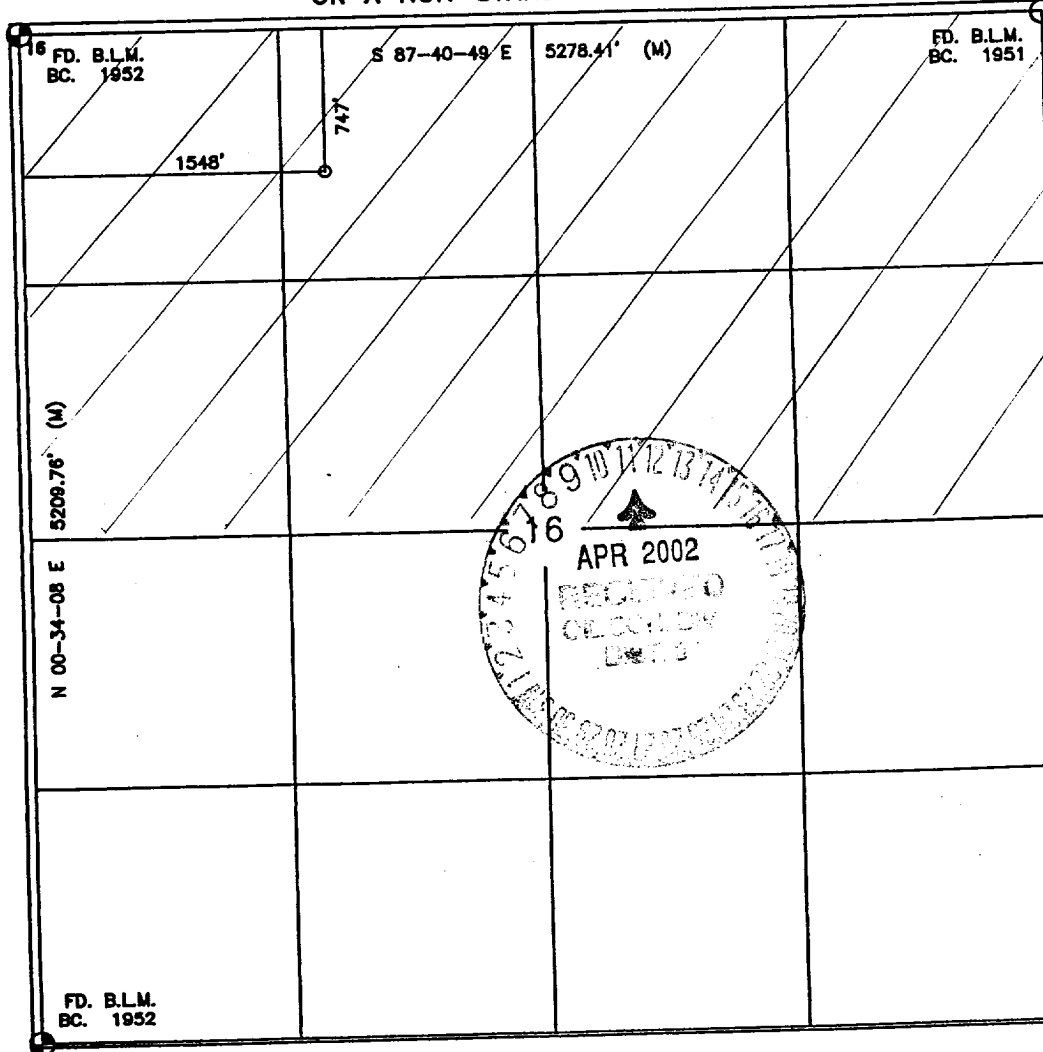
¹⁰Surface Location

UL or lot no.	Section	Township	Range	Lot Idn	Feet from the	North/South line	Feet from the	East/West line	County
C	16	31-N	12-W		747	NORTH	1548	WEST	SAN JUAN

¹¹Bottom Hole Location If Different From Surface

UL or lot no.	Section	Township	Range	Lot Idn	Feet from the	North/South line	Feet from the	East/West line	County
¹² Dedicated Acres 320 N/2		¹³ Joint or Infill I		¹⁴ Consolidation Code		¹⁵ Order No.			

NO ALLOWABLE WILL BE ASSIGNED TO THIS COMPLETION UNTIL ALL INTERESTS HAVE BEEN CONSOLIDATED OR A NON-STANDARD UNIT HAS BEEN APPROVED BY THE DIVISION



17 OPERATOR CERTIFICATION

I hereby certify that the information contained herein is true and complete to the best of my knowledge and belief

Signature Jeffrey W Patton
Printed Name JEFFREY W PATTON
Title DRILLING ENGINEER
Date 4-10-02

18 SURVEYOR CERTIFICATION

I hereby certify that the well location shown on this plat was plotted from field notes of actual surveys made by or under my supervision and that the same is true and correct to the best of my belief

Date of Survey 4-10-02
Signature and Seal of Professional Surveyor [Signature]
Certificate Number 8894

DISTRICT I
P.O. Box 1980, Hobbs, N.M. 88241-1980

DISTRICT II
P.O. Drawer DD, Artesia, N.M. 88211-0719

DISTRICT III
1000 Rio Brazos Rd., Aztec, N.M. 87410

DISTRICT IV
PO Box 2088, Santa Fe, NM 87504-2088

State of New Mexico
Energy, Minerals & Natural Resources Department

OIL CONSERVATION DIVISION
P.O. Box 2088
Santa Fe, NM 87504-2088

Form C-102
Revised February 21, 1994
Instructions on back
Submit to Appropriate District Office
State Lease - 4 Copies
Fee Lease - 3 Copies

☐ AMENDED REPORT

WELL LOCATION AND ACREAGE DEDICATION PLAT

¹ API Number 30-045-31060		² Pool Code 71599	³ Pool Name BASIN DAKOTA
⁴ Property Code 22818	⁵ Property Name STATE BA		⁶ Well Number 1F
⁷ GRID No. 167067	⁸ Operator Name CROSS TIMBERS OPERATING CO.		⁹ Elevation 6166'

¹⁰ Surface Location

UL or lot no.	Section	Township	Range	Lot Idn	Feet from the	North/South line	Feet from the	East/West line	County
C	16	31-N	12-W		747	NORTH	1548	WEST	SAN JUAN

¹¹ Bottom Hole Location If Different From Surface

UL or lot no.	Section	Township	Range	Lot Idn	Feet from the	North/South line	Feet from the	East/West line	County
¹² Dedicated Acres 320 N / 2		¹³ Joint or Infill I		¹⁴ Consolidation Code		¹⁵ Order No.			

NO ALLOWABLE WILL BE ASSIGNED TO THIS COMPLETION UNTIL ALL INTERESTS HAVE BEEN CONSOLIDATED OR A NON-STANDARD UNIT HAS BEEN APPROVED BY THE DIVISION

16 FD. B.L.M. BC. 1952	S 87-40-49 E	5278.41' (M)	FD. B.L.M. BC. 1951
1548'	747'		
5209.76' (M)			
N 00-34-08 E		16	
FD. B.L.M. BC. 1952			

APR 2002
RECEIVED
OIL CONSERVATION DIVISION
DIST. 3

17 OPERATOR CERTIFICATION

I hereby certify that the information contained herein is true and complete to the best of my knowledge and belief

Signature Jeffrey W Patton
Printed Name JEFFREY W PATTON
Title DRILLING LEADER
Date 4-10-02

18 SURVEYOR CERTIFICATION

I hereby certify that the well location shown on this plat was plotted from field notes of actual surveys made by or under my supervision and that the same is true and correct to the best of my belief

Date of Survey 4-10-02
Signature and Seal of Professional Surveyor [Signature]
Certificate Number 8894

BOP SCHEMATIC FOR DRILLING OPERATIONS CLASS 1 (2M) NORMAL PRESSURE

TESTING PROCEDURE

1. Test BOP after installation:

Pressure test BOP to 200-300
psig (low pressure) for 5 min.

Test BOP to Working Press or
to 70% internal yield of surf csg
(10 min).

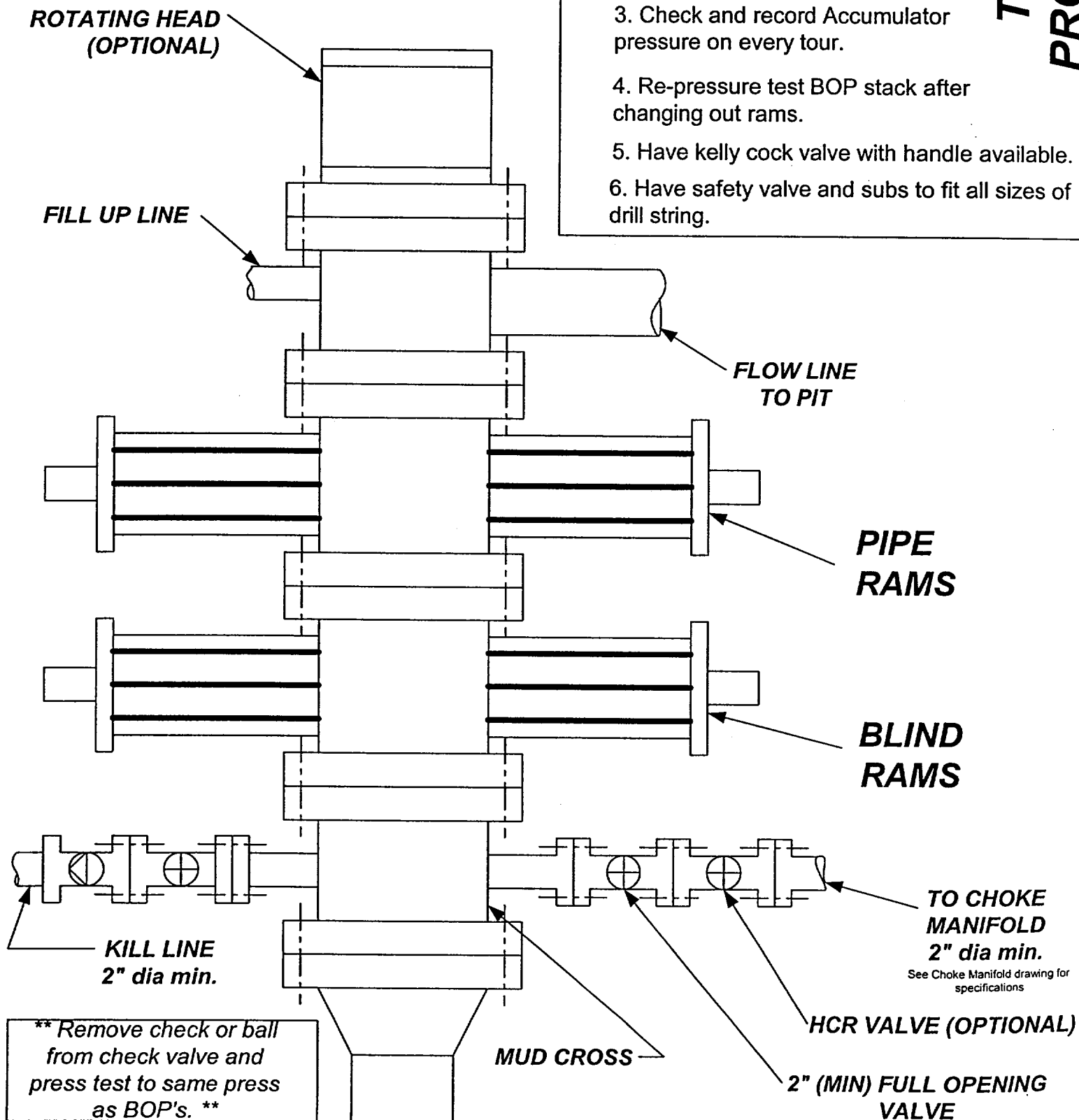
2. Test operation of (both) rams
on every trip.

3. Check and record Accumulator
pressure on every tour.

4. Re-pressure test BOP stack after
changing out rams.

5. Have kelly cock valve with handle available.

6. Have safety valve and subs to fit all sizes of
drill string.



CROSS TIMBERS OPERATING COMPANY

STATE BA No. 1F

NW/4 SEC. 16, T-31-N, R-12-W, N.M.P.M.,

SAN JUAN COUNTY, NEW MEXICO

747 FNL

1548 FWL

