

District I  
PO Box 1980, Hobbs, NM 88241-1980  
District II  
811 S. 1st Street, Artesia, NM 88210-2834  
District III  
1000 Rio Brazos Rd., Aztec, NM 87410  
District IV  
2040 South Pacheco, Santa Fe, NM 87505

State of New Mexico  
Energy, Minerals & Natural Resources Department

OIL CONSERVATION DIVISION  
2040 South Pacheco  
Santa Fe, NM 87505

Form C-101  
Revised October 18, 199  
Instructions on bac  
Submit to Appropriate District O  
State Lease - 6 Copie  
Fee Lease - 5 Copie

☐ AMENDED REPORT

APPLICATION FOR PERMIT TO DRILL, RE-ENTER, DEEPEN, PLUGBACK, OR ADD A ZONE

<sup>1</sup> Operator name and Address XTO Energy Inc. 2700 Farmington Ave., Bldg. K. Ste 1 Farmington, NM 87401		<sup>2</sup> OGRID Number 167067
<sup>4</sup> Property Code 29675	<sup>5</sup> Property Name State Gas Com	<sup>3</sup> API Number 30-045-31065
		<sup>6</sup> Well No. #2

<sup>7</sup> Surface Location									
UL or lot no.	Section	Township	Range	Lot. Idn	Feet from the	North/South Line	Feet from the	East/West line	County
K	32	31N	12W		1620'	South	1480'	West	San Juan

<sup>8</sup> Proposed Bottom Hole Location If Different From Surface

UL or lot no.	Section	Township	Range	Lot. Idn	Feet from the	North/South Line	Feet from the	East/West line	County
<sup>9</sup> Proposed Pool 1 Aztec Pictured Cliffs					<sup>10</sup> Proposed Pool 2 Basin Fruitland Coal				

<sup>11</sup> Work Type Code N	<sup>12</sup> Well Type Code G	<sup>13</sup> Cable/Rotary Rotary	<sup>14</sup> Lease Type Code State	<sup>15</sup> Ground Level Elevation 6,042' Ground Level
<sup>16</sup> Multiple N	<sup>17</sup> Proposed Depth 2,600'	<sup>18</sup> Formation Pictured Cliffs	<sup>19</sup> Contractor Not yet awarded	<sup>20</sup> Spud Date Summer, 2002

<sup>21</sup> Proposed Casing and Cement Program

Hole Size	Casing Size	Casing weight/foot	Setting Depth	Sacks of Cement	Estimated TOC
8-3/4"	7"	20.0#. J-55, STC	200'	75 sx	Surface
6-1/4"	4-1/2"	10.5#. J-55, STC	2,600'	175 sx	Surface

<sup>22</sup> Describe the proposed program. If this application is to DEEPEN or PLUG BACK give the data on the present productive zone and proposed new productive zone. Describe the blowout prevention program, if any. Use additional sheets if necessary

Surface: 75 sx of Type III cement w/2% CC & 1/4#/sx cello (14.8 ppg, 1.39 cuft). Circ to surface.

Production: 175 sx Type III Premium Lite FM (65%/35%/6%) with 1/4#/sx cello & 2% CC (12.5 ppg & 2.01 cuft/sx). Circ to surface.

Remarks: Use 25% excess over volume calculated from op hole logs to determine final cement volume.

BOP diagram is attached.

<sup>23</sup> I hereby certify that the information given above is true and complete to the best of my knowledge and belief.

Signature:

Printed name: Jeffrey W. Patton

Title: Drilling Engineer

OIL CONSERVATION DIVISION

Approved by:

Title:

Approval Date:

Expiration Date:

APR 15 2002

APR 15 2003

DISTRICT I  
1625 N. French Dr., Hobbs, N.M. 88240

DISTRICT II  
811 South First, Artesia, N.M. 88210

DISTRICT III  
1000 Rio Brazos Rd., Aztec, N.M. 87410

DISTRICT IV  
2040 South Pacheco, Santa Fe, NM 87505

State of New Mexico  
Energy, Minerals & Natural Resources Department

Form C-102  
Revised August 15, 2000

Submit to Appropriate District Office  
State Lease - 4 Copies  
Fee Lease - 3 Copies

OIL CONSERVATION DIVISION

2040 South Pacheco  
Santa Fe, NM 87505

☐ AMENDED REPORT

WELL LOCATION AND ACREAGE DEDICATION PLAT

<sup>1</sup> API Number 30045-31065	<sup>2</sup> Pool Code 71629	<sup>3</sup> Pool Name BASIN FRUITLAND COAL
<sup>4</sup> Property Code 29675	<sup>5</sup> Property Name STATE GAS COM	<sup>6</sup> Well Number 2
<sup>7</sup> OCRID No. 167067	<sup>8</sup> Operator Name XTO ENERGY INC.	<sup>9</sup> Elevation 6042'

<sup>10</sup> Surface Location

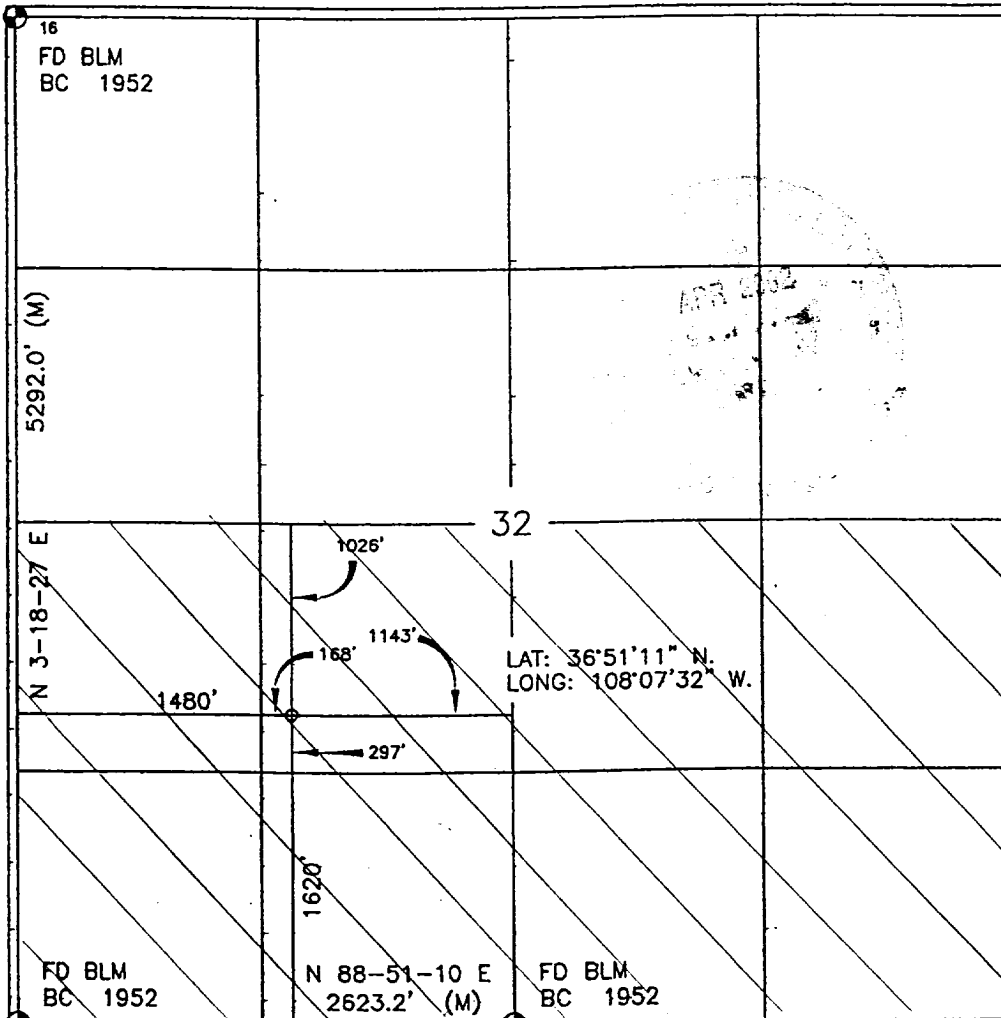
UL or lot no.	Section	Township	Range	Lot Idn	Feet from the	North/South line	Feet from the	East/West line	County
K	32	31-N	12-W		1620	SOUTH	1480	WEST	SAN JUAN

<sup>11</sup> Bottom Hole Location If Different From Surface

UL or lot no.	Section	Township	Range	Lot Idn	Feet from the	North/South line	Feet from the	East/West line	County

<sup>12</sup> Dedicated Acres 320 5/2	<sup>13</sup> Joint or Infill	<sup>14</sup> Consolidation Code	<sup>15</sup> Order No.
--	-------------------------------	----------------------------------	-------------------------

NO ALLOWABLE WILL BE ASSIGNED TO THIS COMPLETION UNTIL ALL INTERESTS HAVE BEEN CONSOLIDATED  
OR A NON-STANDARD UNIT HAS BEEN APPROVED BY THE DIVISION



<sup>17</sup> OPERATOR CERTIFICATION

I hereby certify that the information contained herein  
is true and complete to the best of my knowledge and  
belief

Signature: Jeffrey W. Patton  
Printed Name: JEFFREY W. PATTON  
Title: DRILLING ENGINEER  
Date: 4-11-02

<sup>18</sup> SURVEYOR CERTIFICATION

I hereby certify that the well location shown on this plat  
was plotted from field notes of actual surveys made by  
me or under my supervision, and that the same is true  
and correct to the best of my belief.

Date of Survey: 1-09-02  
Signature and Seal of Registered Professional Land Surveyor:  
ROY A. RUSH  
8894  
Certificate Number

DISTRICT I  
1625 N. French Dr., Hobbs, N.M. 88240

State of New Mexico  
Energy, Minerals & Natural Resources Department

Form C-102  
Revised August 15, 2000

DISTRICT II  
811 South First, Artesia, N.M. 88210

DISTRICT III  
1000 Rio Brazos Rd., Aztec, N.M. 87410

DISTRICT IV  
2040 South Pacheco, Santa Fe, NM 87505

OIL CONSERVATION DIVISION

2040 South Pacheco  
Santa Fe, NM 87505

Submit to Appropriate District Office  
State Lease - 4 Copies  
Fee Lease - 3 Copies

☐ AMENDED REPORT

WELL LOCATION AND ACREAGE DEDICATION PLAT

<sup>1</sup> API Number 30-065-31065		<sup>2</sup> Pool Code 71180	<sup>3</sup> Pool Name ARTEC PICTURED CLIFFS
<sup>4</sup> Property Code 29675	<sup>5</sup> Property Name STATE GAS COM		<sup>6</sup> Well Number 2
<sup>7</sup> OGRID No. 167067	<sup>8</sup> Operator Name XTO ENERGY INC.		<sup>9</sup> Elevation 6042'

<sup>10</sup> Surface Location

UL or lot no.	Section	Township	Range	Lot Idn	Feet from the	North/South line	Feet from the	East/West line	County
K	32	31-N	12-W		1620	SOUTH	1480	WEST	SAN JUAN

<sup>11</sup> Bottom Hole Location If Different From Surface

UL or lot no.	Section	Township	Range	Lot Idn	Feet from the	North/South line	Feet from the	East/West line	County
<sup>12</sup> Dedicated Acres 160 SW/4		<sup>13</sup> Joint or Infill		<sup>14</sup> Consolidation Code		<sup>15</sup> Order No.			

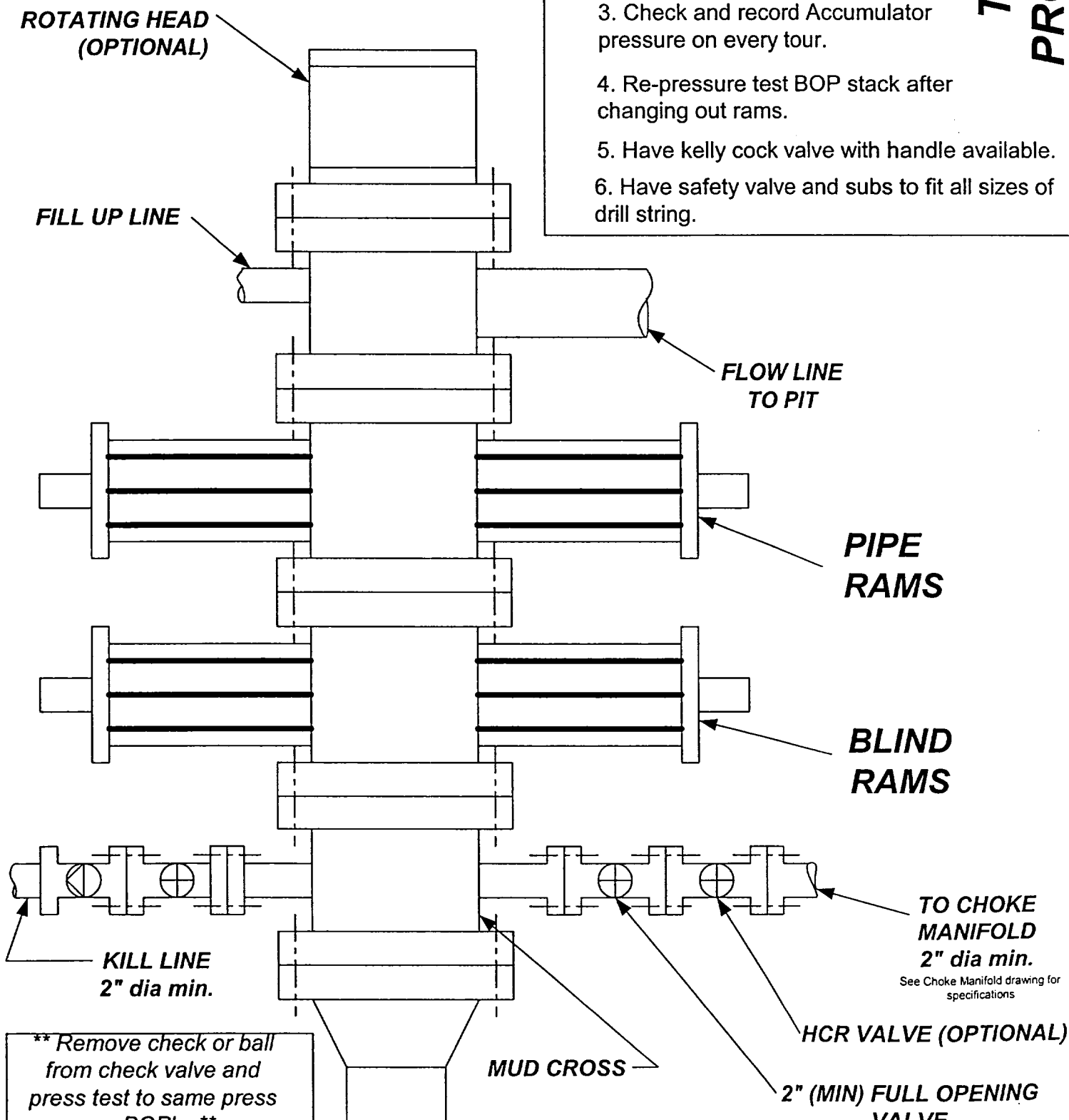
NO ALLOWABLE WILL BE ASSIGNED TO THIS COMPLETION UNTIL ALL INTERESTS HAVE BEEN CONSOLIDATED  
OR A NON-STANDARD UNIT HAS BEEN APPROVED BY THE DIVISION

<p>16 FD BLM BC 1952</p>	<p>5292.0' (M)</p>	<p>32</p>	<p>LAT: 36°51'11" N. LONG: 108°07'32" W.</p>	<p>1026' 1143' 168' 297' 1480' 1620'</p>	<p>FD BLM BC 1952</p>	<p>N 88-51-10 E 2623.2' (M)</p>	<p>FD BLM BC 1952</p>	<p>17 OPERATOR CERTIFICATION</p> <p>I hereby certify that the information contained herein is true and complete to the best of my knowledge and belief</p> <p>Signature <u>AW Patton</u></p> <p>Printed Name <u>JEFFREY W PATTON</u></p> <p>Title <u>DRILLING ENGINEER</u></p> <p>Date <u>9-11-02</u></p>
								<p>18 SURVEYOR CERTIFICATION</p> <p>I hereby certify that the well location shown on this plat was plotted from field notes of actual surveys made by me or under my supervision, and that the same is true and correct to the best of my belief.</p> <p>Date of Survey <u>1-09-02</u></p> <p>Signature and Seal of Professional Surveyor <u>ROY A. RUSH</u></p> <p>8894</p> <p>Certificate Number</p>

# BOP SCHEMATIC FOR DRILLING OPERATIONS CLASS 1 (2M) NORMAL PRESSURE

## TESTING PROCEDURE

1. Test BOP after installation:  
Pressure test BOP to 200-300 psig (low pressure) for 5 min.  
Test BOP to Working Press or to 70% internal yield of surf csg (10 min).
2. Test operation of (both) rams on every trip.
3. Check and record Accumulator pressure on every tour.
4. Re-pressure test BOP stack after changing out rams.
5. Have kelly cock valve with handle available.
6. Have safety valve and subs to fit all sizes of drill string.



# XTO ENERGY INC.

STATE GAS COM No. 2

FAR

SW/4 SEC. 32, T-31-N, R-12-W, N.M.P.M.,

SAN JUAN COUNTY, NEW MEXICO

STATES

OF THE INTERIOR

AL SURVEY

754 R. 13 W. R. 12 W

1620' FSL

1480' FWL

5700m. E.

158 23 4

