

UNITED STATES
DEPARTMENT OF THE INTERIOR
BUREAU OF LAND MANAGEMENT

APPLICATION FOR PERMIT TO DRILL, DEEPEN, OR PLUG BACK

1a. Type of Work DRILL	5. Lease Number NM-6893 Unit Reporting Number
1b. Type of Well GAS	6. If Indian, All. or Tribe
2. Operator BURLINGTON RESOURCES Oil & Gas Company	7. Unit Agreement Name
3. Address & Phone No. of Operator PO Box 4289, Farmington, NM 87499 (505) 326-9700	8. Farm or Lease Name Wilmer Canyon 9. Well Number 101
4. Location of Well 1955' FSL, 1915' FWL Latitude 36° 57.1'N, Longitude 107° 37.7'W	10. Field, Pool, Wildcat Basin Fruitland Coal 11. Sec., Twn, Rge, Mer. (NMPM) K Sec. 25, T-32-N, R-8-W API # 30-045-31096
14. Distance in Miles from Nearest Town Navajo Dam Post Office 22 Miles	12. County San Juan 13. State NM
15. Distance from Proposed Location to Nearest Property or Lease Line 1915'	17. Acres Assigned to Well 320 W/2
16. Acres in Lease	
18. Distance from Proposed Location to Nearest Well, Drlg, Compl, or Applied for on this Lease 2000'	
19. Proposed Depth 3913 DRLING OPERATIONS AUTHORIZED ARE SUBJECT TO COMPLIANCE WITH ATTACHED GENERAL PRODUCTION TEXTS	20. Rotary or Cable Tools Rotary
21. Elevations (DF, FT, GR, Etc.) 7040 GR	22. Approx. Date Work will Start
23. Proposed Casing and Cementing Program See Operations Plan attached	This action is subject to technical and procedural review pursuant to 43 CFR 3165.3 and appeal pursuant to 43 CFR 3165.4
24. Authorized by: <u>Pepper Case</u> Regulatory/Compliance Supervisor	Date <u>4-2-02</u>

PERMIT NO.

APPROVAL DATE

APPROVED BY

TITLE

DATE JUN 27 2002

Archaeological Report to be submitted

Threatened and Endangered Species Report to be submitted

NOTE: This format is issued in lieu of U.S. BLM Form 3160-3

Title 18 U.S.C. Section 1001, makes it a crime for any person knowingly and willfully to make to any department or agency of the United States any false, fictitious or fraudulent statements or presentations as to any matter within its jurisdiction.

NMOCD

District I
PO Box 1980, Hobbs, NM 88241-1980

District II
PO Drawer DD, Artesia, NM 88211-0719

District III
1000 Rio Brazos Rd., Aztec, NM 87410

District IV
PO Box 2088, Santa Fe, NM 87504-2088

State of New Mexico
Energy, Minerals & Natural Resources Department

OIL CONSERVATION DIVISION
PO Box 2088
Santa Fe, NM 87504-2088

Form C-102
Revised February 21, 1994
Instructions on back
Submit to Appropriate District Office
State Lease - 4 Copies
Fee Lease - 3 Copies

☐ AMENDED REPORT

WELL LOCATION AND ACREAGE DEDICATION PLAT

*API Number 30-045- 31096		*Pool Code 71629	*Pool Name Basin Fruitland Coal
*Property Code 18641	*Property Name WILMER CANYON		*Well Number 101
*GRID No. 14538	*Operator Name BURLINGTON RESOURCES OIL & GAS COMPANY LP		*Elevation 7040'

¹⁰ Surface Location

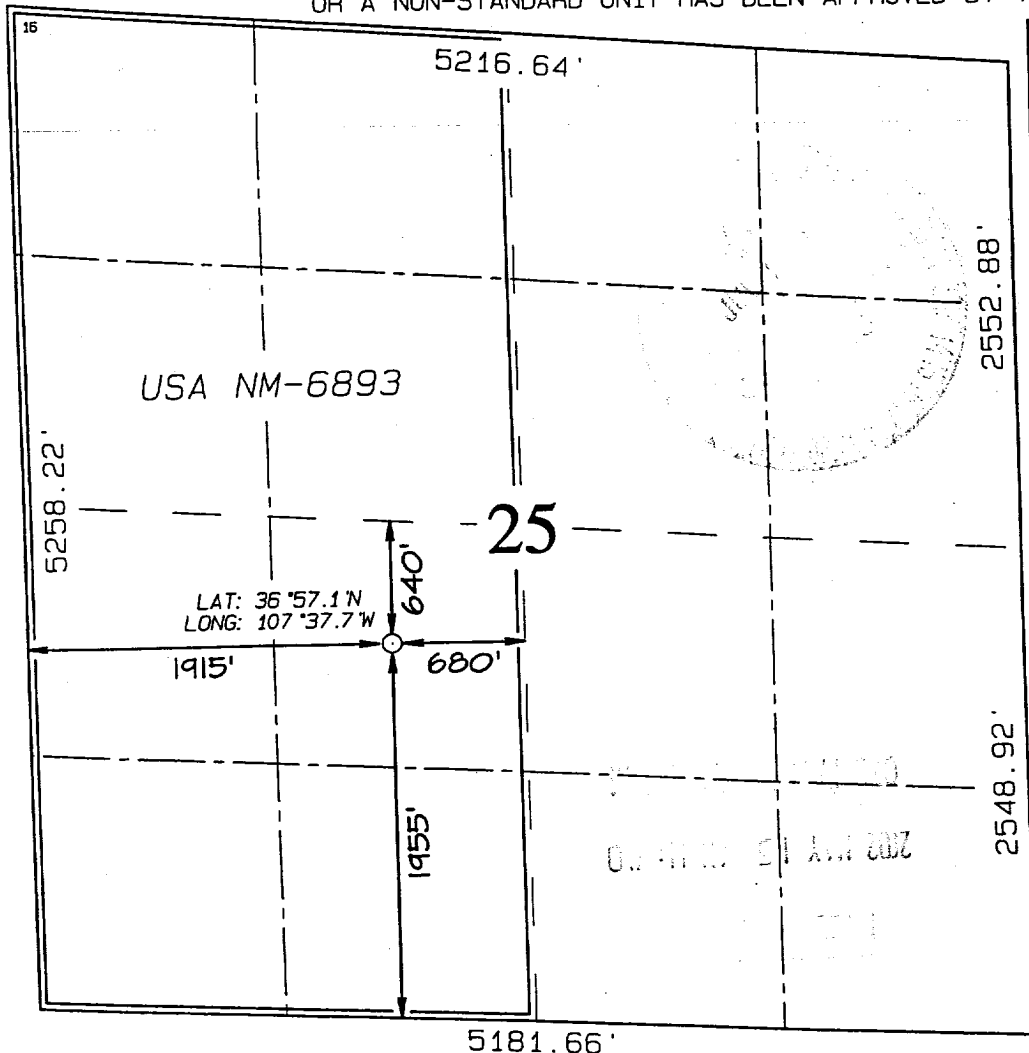
UL or lot no.	Section	Township	Range	Lot Idn	Feet from the	North/South line	Feet from the	East/West line	County
K	25	32N	8W		1955	SOUTH	1915	WEST	SAN JUAN

¹¹ Bottom Hole Location If Different From Surface

UL or lot no.	Section	Township	Range	Lot Idn	Feet from the	North/South line	Feet from the	East/West line	County

¹² Dedicated Acres FC-W/320	¹³ Joint or Infill	¹⁴ Consolidation Code	¹⁵ Order No.
---	-------------------------------	----------------------------------	-------------------------

NO ALLOWABLE WILL BE ASSIGNED TO THIS COMPLETION UNTIL ALL INTERESTS HAVE BEEN CONSOLIDATED
OR A NON-STANDARD UNIT HAS BEEN APPROVED BY THE DIVISION



¹⁷ OPERATOR CERTIFICATION

I hereby certify that the information
contained herein is true and complete
to the best of my knowledge and belief

Peggy Cole
Signature

Printed Name

Peggy Cole
Title

Regulatory Supervisor

Date **4-2-02**

¹⁸ SURVEYOR CERTIFICATION

I hereby certify that the well location
shown on this plat was plotted from field
notes of actual surveys made by me or under
my supervision, and that the same is true
and correct to the best of my belief.

Survey Date: JANUARY 21, 2002

Signature and Seal of Professional Surveyor



JASON C. EDWARDS
Certificate Number 15269

BURLINGTON RESOURCES OIL & GAS COMPANY WILMER CANYON #101

1955' FSL & 1915' FWL, SECTION 25, T32N, R8W, N.M.P.M.
SAN JUAN COUNTY, NEW MEXICO

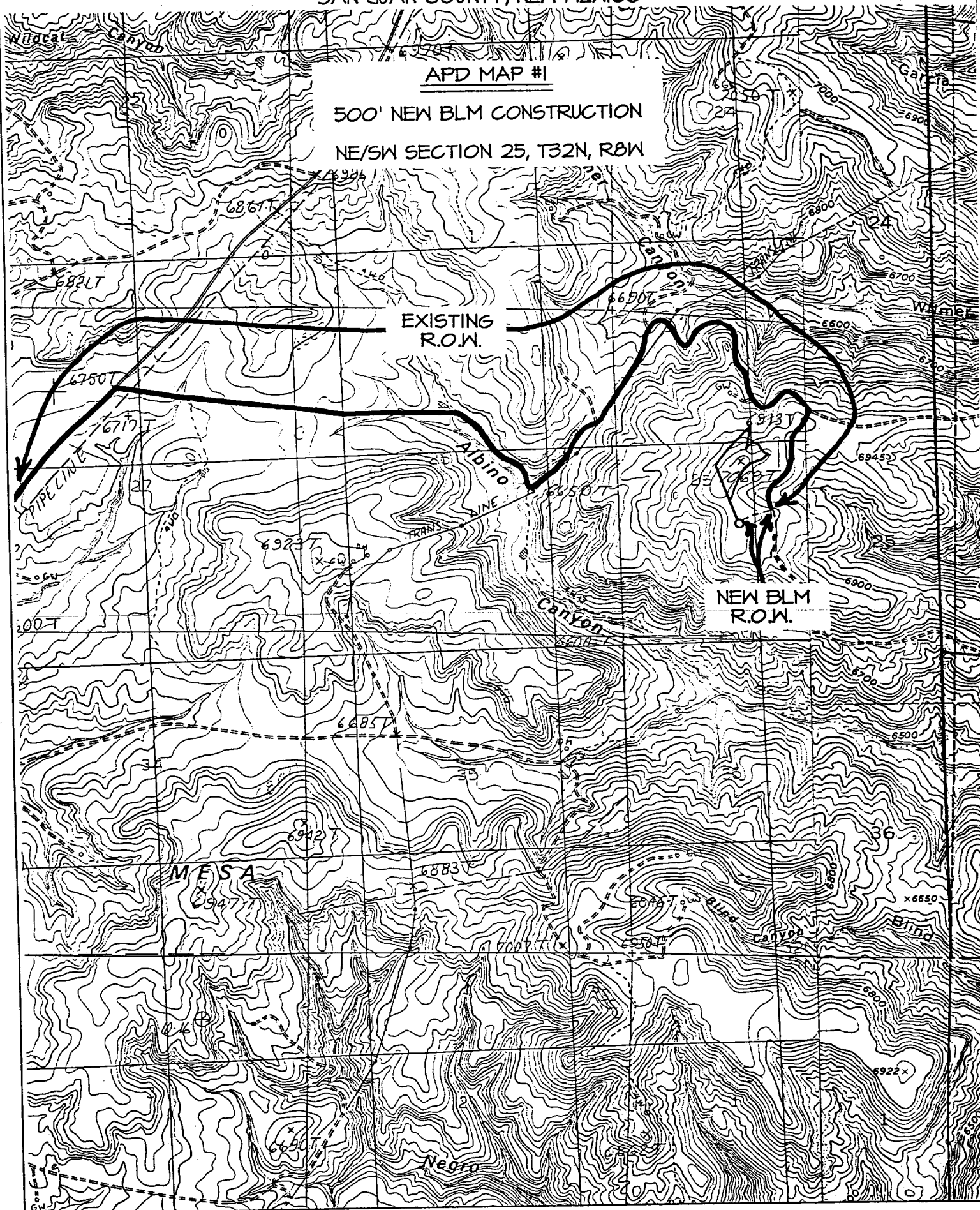
APD MAP #1

500' NEW BLM CONSTRUCTION

NE/SW SECTION 25, T32N, R8W

EXISTING
R.O.W.

NEW BLM
R.O.W.



OPERATIONS PLAN

Well Name: Wilmer Canyon 101
Location: 1955'FSL, 1915'FWL, Section 25, T-32-N, R-08-W
San Juan County, NM
Formation: Basin Fruitland Coal
Elevation: 7040'GL

Formation:	Top	Bottom	Contents
Surface	San Jose	2710'	
Ojo Alamo	2710'	2780'	aquifer
Kirtland	2780'	3437'	
Fruitland	3437'	3585'	gas
Fruitland Coal Top	3585'	3901'	gas
Fruitland Coal Base	3901'		gas
Total Depth	3913'		

Logging Program: Mudlog openhole section with Softrock - services critical to drill lower coals but to stay out of PC main.

Mud Program:

Interval	Type	Weight	Vis.	Fluid Loss
0- 200'	Spud	8.4-9.0	40-50	no control
200-3565'	Non-dispersed	8.4-9.0	30-60	no control
3565-3913'	Air/Mist			

Casing Program:

Hole Size	Depth Interval	Csg.Size	Wt.	Grade
12 1/4"	0' - 200'	9 5/8"	32.3#	H-40
8 3/4"	0' - 3565'	7"	20.0#	K-55
6 1/4"	3525' - 3913'	5 1/2"	15.5#	K-55

Tubing Program:

0' - 3913'	2 3/8"	4.7#	J-55
------------	--------	------	------

Float Equipment: 9 5/8" surface casing - saw tooth guide shoe. Centralizers will be run in accordance with Onshore Order #2.

7" intermediate casing - guide shoe and self-fill insert float collar. Three centralizers run every fourth joint above shoe. Run insert float one joint above guide shoe. Two turbolizing type centralizers - one below and one into the base of the Ojo Alamo @ 2780'. Standard centralizers thereafter every fourth joint up to the base of the surface pipe.

5 1/2" production casing - Pre-drilled liner run to the 7" casing with an overlap. Liner hanger is a slip grip type.

Wellhead Equipment: 9 5/8" x 7" x 2 3/8" x 11" 3000 psi xmas tree assembly.

Cementing:

9 5/8" surface casing - cement with 133 sx Type III cement with 1/4# flocele/sx and 2% calcium chloride (188 cu.ft. of slurry, 200% excess to circulate to surface). WOC 8 hrs. Test casing to 600 psi/30 minutes.

7" intermediate casing - lead w/445 sacks Premium Lite with, 3% calcium chloride, 1/4#/sack flocele, 5 pps Lcm-1, 0.4% FL-52, 0.4% sms. Tail with 90 ~~SX~~ Type III cement with 1% calcium chloride and 1/4 pps flocele (1072 cu.ft., 100% excess to circulate to surface).

Note: If open hole logs are run, cement volumes will be based on 25% excess over caliper volumes.

BOP and tests:

Surface to intermediate TD - 11" 2000 psi (minimum) double gate BOP stack (Reference Figure #1). Prior to drilling out surface casing, test rams to 600#/30 min.

Intermediate TD to Total Depth - 7 1/6" 2000 psi (minimum) double gate BOP stack (Reference Figure #2). Prior to drilling out intermediate casing, test blind rams and casing to 2500 psi for 30 minutes; all pipe rams and casing to 2500 psi for 30 minutes each.

From surface to TD - choke manifold (Reference Figure #3).

Pipe rams will be actuated at least once each day and blind rams actuated once each trip to test proper functioning. An upper kelly cock valve with handle and drill string safety valves to fit each drill string will be maintained and available on the rig floor.

Additional information:

- * The Fruitland Coal formation will be completed.
- * Anticipated pore pressure for the Fruitland is 1000 psi.
- * This gas is dedicated.
- * The West half of Section 25 is dedicated to the Fruitland Coal.

Eric J. Giles
Drilling Engineer

4/18/02
Date