

District I
1625 N. French Dr., Hobbs, NM 88240
District II
811 South First, Artesia, NM 88210
District III
1000 Rio Brazos Road, Aztec, NM 87410
District IV
2040 South Pacheco, Santa Fe, NM 87505

State of New Mexico
Energy Minerals and Natural Resources

Form C-101
Revised March 17, 1999

Oil Conservation Division
2040 South Pacheco
Santa Fe, NM 87505

Submit to appropriate District Office
State Lease - 6 Copies
Fee Lease - 5 Copies

AMENDED REPORT

APPLICATION FOR PERMIT TO DRILL, RE-ENTER, DEEPEN, PLUGBACK, OR ADD A ZONE

¹ Operator Name and Address BP America Production Company P. O. Box 3092 Houston, Texas 77253		² OGRID Number 000778
³ Property Code 001003	⁵ Property Name Sammons Gas Com A	⁴ API Number 30-045-31158
		⁶ Well No. 1M

⁷ Surface Location									
UL or lot no.	Section	Township	Range	Lot Idn	Feet from the	North/South line	Feet from the	East/West line	County
0	06	31N	10W		805'	South	805'	East	San Juan

⁸ Proposed Bottom Hole Location If Different From Surface									
UL or lot no.	Section	Township	Range	Lot Idn	Feet from the	North/South line	Feet from the	East/West line	County
⁹ Proposed Pool 1 Basin Dakota					¹⁰ Proposed Pool 2 Blanco Mesaverde				

¹¹ Work Type Code N - New Drill	¹² Well Type Code Gas	¹³ Cable/Rotary Rotary/Top Drive	¹⁴ Lease Type Code Fee	¹⁵ Ground Level Elevation 5916'
¹⁶ Multiple Downhole Commingle	¹⁷ Proposed Depth 7230'	¹⁸ Formation Dakota/Mesaverde	¹⁹ Contractor Aztec	²⁰ Spud Date 01/05/2003

²¹ Proposed Casing and Cement Program					
Hole Size	Casing Size	Casing weight/foot	Setting Depth	Sacks of Cement	Estimated TOC
12 1/2"	9 5/8"	32.3#	120'	70 SXS CLS G	Surface
8 3/4"	7	20#	2966'	340 SXS G & 50/50	Surface
6 1/4"	4 1/2" (LINER)	11.6#	7230'	320 SXS Lite & 50/50	2866'

²² Describe the proposed program. If this application is to DEEPEN or PLUG BACK, give the data on the present productive zone and proposed new productive zone. Describe the blowout prevention program, if any. Use additional sheets if necessary.

OBJECTIVE: To drill the subject well to a total depth of approximately 7230', complete in the Basin Dakota Pool, produce the well for approximately 30 days to establish production rate, then add the Blanco Mesaverde Pool and commingle production downhole.

Application for downhole commingling authority (NMOCD order R-11363) will be submitted to all appropriate parties for approval after production has been established in the Basin Dakota Pool and prior to completion of and downhole commingling with the Blanco Mesaverde.

NOTE: Sever surface terrain forces surface location at approximately 620' from nearest property line. NSL application will be submitted to the Santa Fe office for approval. Please refer to the attachments for further drilling info.

²³ I hereby certify that the information given above is true and complete to the best of my knowledge and belief. Signature: <i>Mary Corley</i>		OIL CONSERVATION DIVISION	
Printed name: Mary Corley		Approved by: <i>[Signature]</i>	
Title: Sr. Regulatory Analyst		Title: DEPUTY ASST. COMMISSIONER, ENR.	
Date: 07/26/2002	Phone: 281-366-4491	Approval Date: AUG - 2 2002	Expiration Date: AUG - 2 2003
		Conditions of Approval:	
		Attached	

Dist. A I
PO Box 1980, Hobbs NM 88241-1980
District II
PO Drawer KK, Artesia, NM 87211-0719
District III
1000 Rio Brazos Rd., Aztec, NM 87410
District IV
PO Box 2088, Santa Fe, NM 87504-2088

State of New Mexico
Energy, Minerals & Natural Resources Department

OIL CONSERVATION DIVISION
PO Box 2088
Santa Fe, NM 87504-2088

Form C-102
Revised February 21, 1994
Instructions on back
Submit to Appropriate District Office
State Lease - 4 Copies
Fee Lease - 3 Copies

☐ AMENDED REPORT

WELL LOCATION AND ACREAGE DEDICATION PLAT

¹ API Number 30-045-31158	² Pool Code 71559:72319	³ Pool Name BASIN DAKOTA : BLANCO MESA VERDE
⁴ Property Code 001003	⁵ Property Name Sammons Gas Com A	⁶ Well Number # 1M
⁷ OGRID No. 000778	⁸ Operator Name BP AMERICA PRODUCTION COMPANY	⁹ Elevation 5916

¹⁰ Surface Location

UL or Lot No. O	Section 6	Township 31 N	Range 10 W	Lot Idn	Feet from the 805	North/South line SOUTH	Feet from the 2060	East/West line EAST	County SAN JUAN
--------------------	--------------	------------------	---------------	---------	----------------------	---------------------------	-----------------------	------------------------	--------------------

¹¹ Bottom Hole Location If Different From Surface

⁷ UL or lot no. O	Section 6	Township 31 N	Range 10 W	Lot Idn	Feet from the 805	North/South line SOUTH	Feet from the 2020	East/West line EAST	County SAN JUAN
---------------------------------	--------------	------------------	---------------	---------	----------------------	---------------------------	-----------------------	------------------------	--------------------

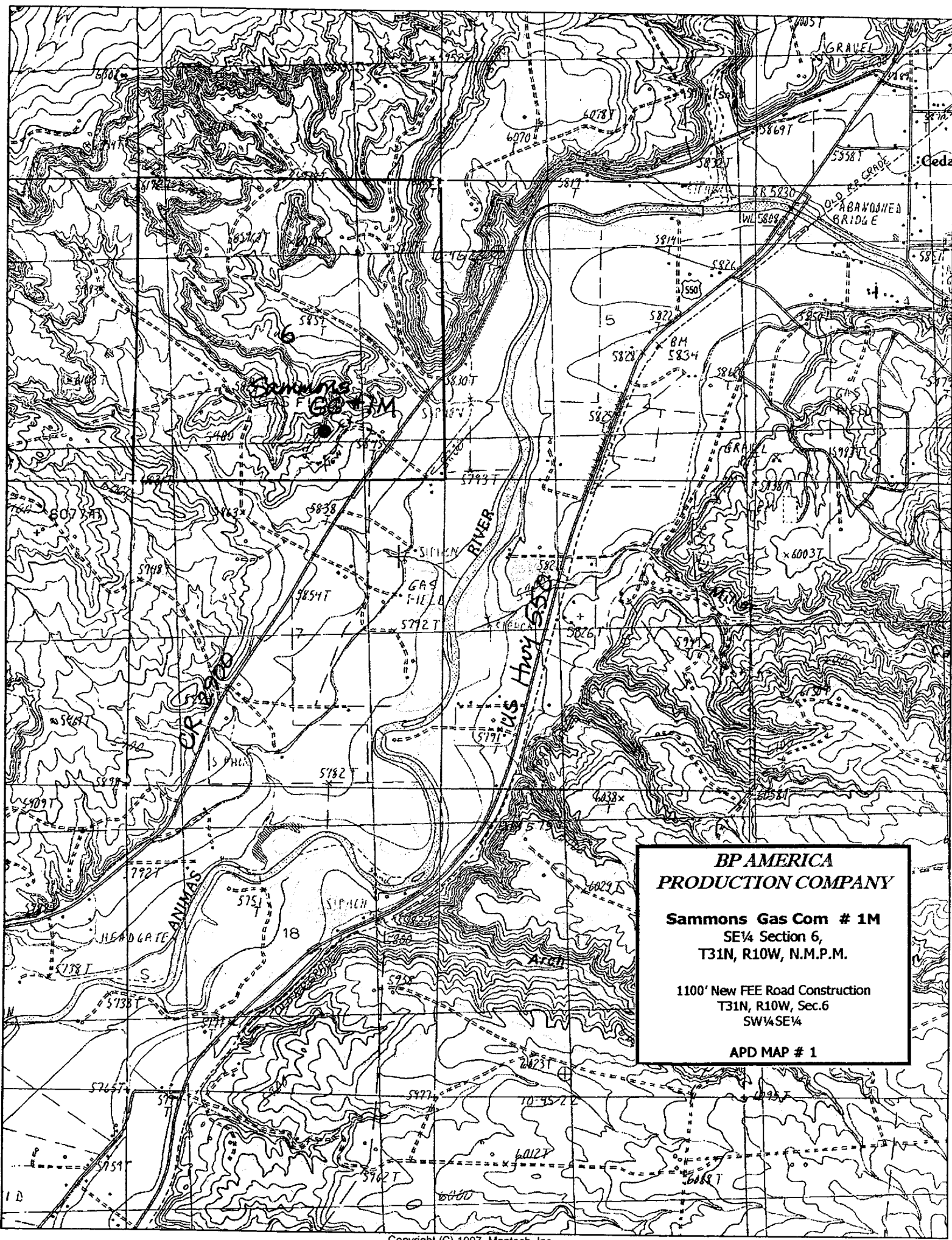
¹² Dedicated Acres 320.29	¹³ Joint or Infill	¹⁴ Consolidation Code	¹⁵ Order No.
---	-------------------------------	----------------------------------	-------------------------

NO ALLOWABLE WILL BE ASSIGNED TO THIS COMPLETION UNTIL ALL INTERESTS HAVE BEEN CONSOLIDATED
OR A NON-STANDARD UNIT HAS BEEN APPROVED BY THE DIVISION

¹⁶ 1210'(R) 1309'(R) Lot 9 1309'(R) Lot 10 1309'(R) Lot 6 2619'(R) Lot 7 1303'(R)	1325'(R) Lot 8 Lot 11 Lot 12 1332'(R)	2649'(R) Lot 2 8" Lot 1 2607'(R) 2607'(R) 2675'(R)	¹⁷ OPERATOR CERTIFICATION I hereby certify that the information contained herein is true and complete to the best of my knowledge and belief. Mary Corley Mary Corley Signature Mary Corley Printed Name Sr. Regulatory Analyst Title 07.26.2002 Date ¹⁸ SURVEYOR CERTIFICATION I hereby certify that the well location shown on this plat was plotted from field notes of actual surveys made by me or under my supervision, and that the same is true and correct to the best of my belief. July 10, 2002 Date of Survey Signature and Seal of Professional Surveyor GARY D. VANN NEW MEXICO REGISTERED PROFESSIONAL LAND SURVEYOR 7016 7016 Certificate Number
--	---	--	--

Azimuth - 90°00' 40'
Bottom Hole Location
805' F/SL 2020' F/EL
2060'
660'
805'

(R) - BLM Record



**BP AMERICA
PRODUCTION COMPANY**

Sammons Gas Com # 1M
SE 1/4 Section 6,
T31N, R10W, N.M.P.M.

1100' New FEE Road Construction
T31N, R10W, Sec.6
SW 1/4 SE 1/4

APD MAP # 1

**BP AMERICA PRODUCTION COMPANY
DRILLING AND COMPLETION PROGRAM**

Prospect Name: Sammons GC A
Lease: Sammons GC A
County: San Juan
State: New Mexico
Date: July, 24 2002

Well No: 1M
Surface Location: 06-31N-10W, 805 FSL, 2060 FEL
Field: Blanco Mesaverde/Basin Dakota

OBJECTIVE: Drill 50' below the base of the Lower Cubero, set 41/2" production casing, Stimulate LS, CH, MF, PL and DK intervals

METHOD OF DRILLING		APPROXIMATE DEPTHS OF GEOLOGICAL MARKER			
TYPE OF TOOLS	DEPTH OF DRILLING	Estimated GL: 5916		Estimated KB: 5930	
Rotary	0 - TD	MARKER		SUBSEA	MEAS. DEPTH
LOG PROGRAM		Ojo Alamo		4683	1247
		Kirtland		4515	1415
		Fruitland Coal	*	3571	2359
		Pictured Cliffs	*	3244	2686
		Lewis Shale	#	3064	2866
		Cliff House	#	1743	4187
		Menefee Shale	#	1365	4565
		Point Lookout	#	1019	4911
		Mancos		644	5286
		Greenhorn		-1004	6934
		Bentonite Marker		-1059	6989
		Two Wells	#	-1113	7043
		Paguate	#	-1210	7140
		Upper Cubero	*	-1238	7168
		Lower Cubero	*	-1250	7180
		TOTAL DEPTH		-1300	7230
REMARKS: - Please report any flares (magnitude & duration).		# Probable completion interval			
		* Possible Pay			
SPECIAL TESTS		DRILL CUTTING SAMPLES		DRILLING TIME	
TYPE		FREQUENCY	DEPTH	FREQUENCY	DEPTH
None		none	Production hole	Geograph	0-TD
REMARKS:					

MUD PROGRAM:					
Approx. Interval	Type Mud	Weight, #/ga	Vis, sec/qt	W/L cc's/30 min	Other Specification
0 - 120	Spud	8.6-9.2			
120 - 2966 (1)	Water/LSND	8.6-9.2		<6	
2966 - 7230	Gas/Air/N2/Mist	Volume sufficient to maintain a stable and clean wellbore			

REMARKS:
(1) The hole will require sweeps to keep unloaded while fresh water drilling. Let hole conditions dictate frequency.

CASING PROGRAM: (Normally, tubular goods allocation letter specifies casing sizes to be used. Hole sizes will be governed by Contract)						
Casing String	Estimated Depth	Casing Size	Grade	Weight	Hole Size	Landing Pt, Cmt, Etc.
Surface/Conductor	120	9 5/8"	H-40 ST&C	32#	12.25"	1
Intermediate	2966	7"	J/K-55 ST&C	20#	8.75"	1,2
Production	7230	4 1/2"	J-55	11.6#	6.25"	3

REMARKS:
(1) Circulate Cement to Surface
(2) Set casing 100' into Lewis Shale
(3) Bring cement 100' above 7" shoe

CORING PROGRAM:
None

COMPLETION PROGRAM:
Rigless, 4-6 Stage Limited Entry Hydraulic Frac

GENERAL REMARKS:
Notify BLM/NMOCD 24 hours prior to Spud, BOP testing, and Casing and Cementing.

Form 46 Reviewed by: _____ Logging program reviewed by: N/A

PREPARED BY:	APPROVED:	DATE:
HGJ/MNP		24 th July 2002
		Version 1.0

Form 46 12-00 MNP

BOP Pressure Testing Requirements

Well Name: Sammons GC A
County: San Juan

1M
State: New Mexico

Formation	TVD	Anticipated Bottom Hole Pressure	Maximum Anticipated Surface Pressure **
Ojo Alamo	1247		
Kirtland	1415		
Fruitland Coal	2359		
PC	2686		
Lewis Shale	2866		
Cliff House	4187	500	0
Menefee Shale	4565		
Point Lookout	5911	600	0
Mancos	5286		
Dakota	7140	2600	1391

** Note: Determined using the following formula: $ABHP - (.22 \times TVD) = ASP$

Requested BOP Pressure Test Exception: 1500 psi

SAN JUAN BASIN Dakota Formation Pressure Control Equipment

Background

The objective Dakota formation maximum surface pressure is anticipated to be less than 1000 PSI, based on shut-in surface pressures from adjacent wells. Pressure control equipment working pressure minimum requirements are therefore 2000 PSI. Equipment to be used will conform to API RP-53 (Figure 2.C.2) for a 2000 PSI system per Federal Onshore Order No. 2. Due to available conventional equipment within the area, 3000 PSI rated pressure control equipment will typically be utilized in a double ram type arrangement. Regional drilling rights to be utilized have substructure height limitations which exclude the use of annular preventers; therefore a rotating head will be installed above these rams. This pressure control equipment will be utilized for conventional drilling below conductor to total depth in the Basin Dakota. No abnormal temperature, pressure, or H2S anticipated.

Equipment Specification

Interval

BOP Equipment

Below conductor casing to total depth 11" nominal or 7 1/16", 3000 PSI
double ram preventer with rotating
head.

All ram type preventers and related control equipment will be hydraulically tested to 250 PSI (low pressure) and 2000 PSI (high pressure), upon installation, following any repairs or equipment replacements, or at 30 day intervals. Accessories to BOP equipment will include kelly cock, upper kelly cock with a handle available, floor safety valves and choke manifold which will also be tested to equivalent pressure.