

Company Kenneth Murchison

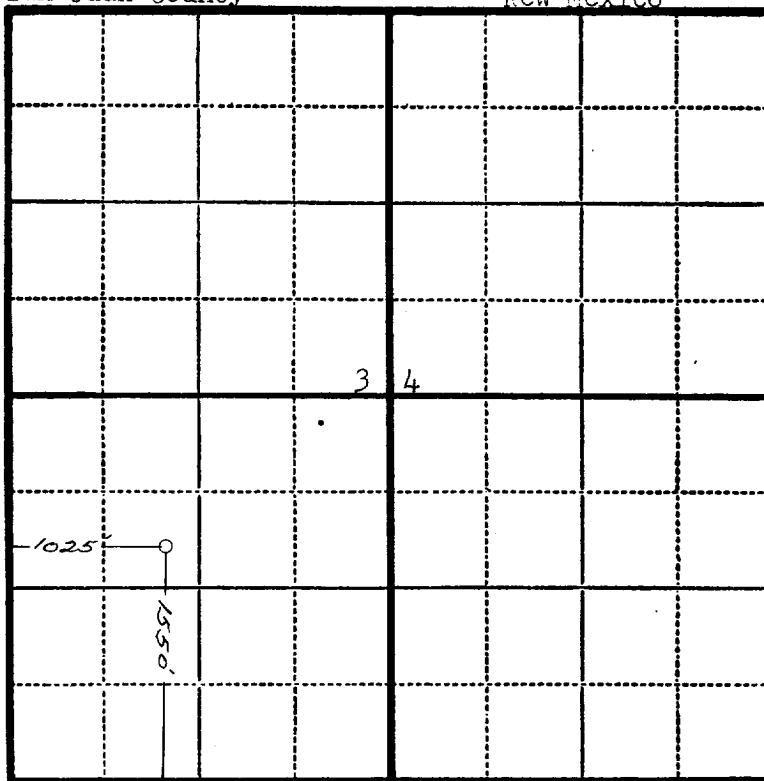
Lease E. Storey Well No. 1

Sec. 34 T. 32 N., R. 11 W., N.M.P.M.

Location 1550' from the South line and 1025' from  
the West line.

San Juan County

New Mexico



Scale—4 inches equals 1 mile.

This is to certify that the above plat was prepared from field notes of actual surveys made by me or under my supervision and that the same are true and correct to the best of my knowledge and belief.

*Charles J. Finklea*

Seal:

Registered Professional  
Engineer and Land Surveyor.

Charles J. Finklea  
N. Mex. Reg. No. 1302

Surveyed April 23, 1952

